

# TONIGHTS LINE UP

## ROUGHYEDS

## LEEDS

- |                   |                    |
|-------------------|--------------------|
| 1 Wally Gibson    | 1 Alan Tait        |
| 2 Adrian Belle    | 2 Jim Fallon       |
| 3 Darren Abrams   | 3 Kevin Iro        |
| 4 Shawn Irwin     | 4 Craig Innes      |
| 5 Scott Ranson    | 5 Francis Cummings |
| 6 Paul Topping    | 6 Gary Schofield   |
| 7 Martin Crompton | 7 Graham Holroyd   |
| 8 Ian Sherratt    | 8 Harvey Howard    |
| 9 John Clarke     | 9 James Lowe       |
| 10 Jason Temu     | 10 Esene Faimalo   |
| 11 Joe Faimalo    | 11 Gary Mercer     |
| 12 Gary Lord      | 12 Richie Eyres    |
| 13 Mike Kuiti     | 13 Ellery Hanley   |
| 14 T.B.A.         | 14 George Mann     |
| 15 T.B.A.         | 15 Neil Harmon     |

Colours: Red & White

Colours: Blue & Yellow

Referee: J. Holdsworth  
 Touch Judges: B. Blunden ■  
 D. Davies ■

Executive Guest:  
**HAMMOND SUDDARDS**

OFFICIAL CLUB SPONSOR

Man of the Match:  
**KEVIN KERSHAW ASSOCIATES**



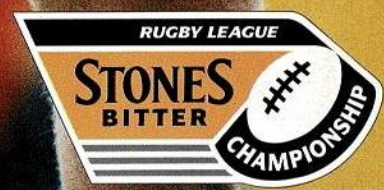
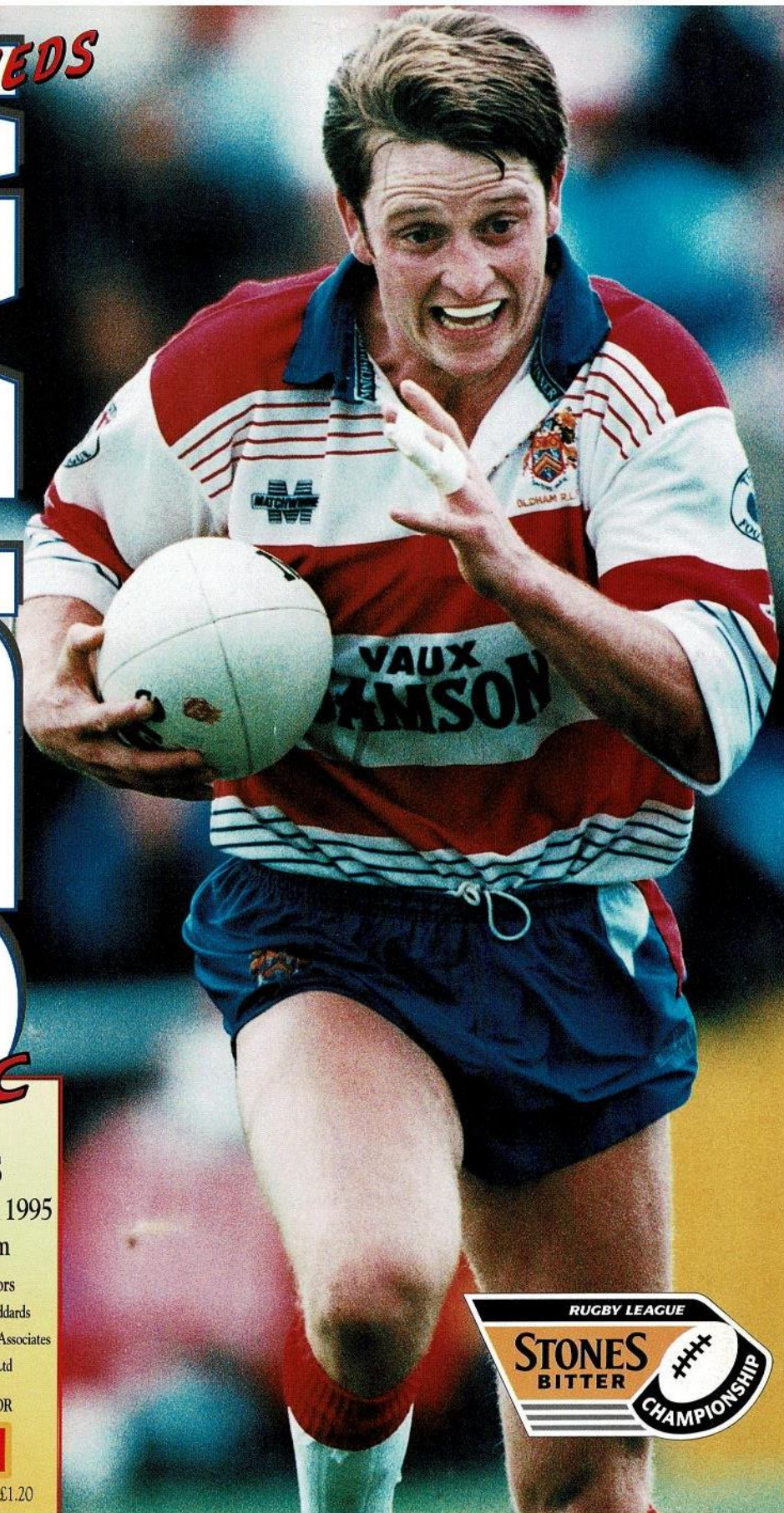
Matchball:  
**DEREK ANTHONY LTD**

**ROUGHYEDS**

**OLDHAM**



versus  
**LEEDS**  
 Wednesday Jan 11th 1995  
 Kick Off 7.30pm  
 Tonight's Match Sponsors  
 Executive Guest: Hammond Suddards  
 Man of the Match: Kevin Kershaw Associates  
 Matchball: Derek Anthony Ltd  
 OFFICIAL CLUB SPONSOR  
**VAUX**  
 Official Matchday Magazine £1.20



**OLDHAM**  
**RLFC**

Sponsored by **W Welcome**

Financial Services Limited, Owl House, 2nd Floor, 59 Great Underbank, Stockport, Cheshire SK1 1NE

NO GUTS NO GLORY

# ROLL OF HONOUR

## OLDHAM RUGBY LEAGUE FOOTBALL CLUB

### CLUB HONOURS

#### Rugby League Championship Play-off Winners

1909-10, 1910-11, 1956-57

#### Runners Up

1906-07, 1907-08, 1908-09, 1921-22, 1954-55

#### First Division Champions

1904-05

#### Second Division Champions

1963-64, 1981-82, 1987-88

#### Rugby League Challenge Cup Winners

1898-99, 1924-25, 1926-27

#### Runners Up

1906-07, 1911-12, 1923-24, 1925-26

#### Lancashire Cup Winners

1907-08, 1910-11, 1913-14, 1919-20, 1924-25, 1933-34, 1956-57, 1957-58, 1958-59

#### Runners Up

1908-09, 1911-12, 1918-19, 1921-22, 1954-55, 1966-67, 1968-69, 1986-87, 1989-90

#### Lancashire Championship Winners

1907-08, 1909-10, 1921-22, 1956-57, 1957-58

#### Runners Up

1908-09, 1910-11, 1911-12, 1919-20, 1923-34, 1954-55

#### Lancashire Shield Winners

1975-76, 1979-80

#### Colts Premiership Trophy

1979-80, 1989-90

#### Second Division Premiership

1987-88

#### Wigan Sevens Winners

1991-92



The Pavilion, Watersheddings, Oldham  
Telephone: 061 652 5244 & 061 624 4865

Chairman: Jim Quinn

Directors: John Chadwick, Roger Norriss, Mike Winterbottom

General Manager: Terry Donovan

Club Secretary: Karen Scott

Commercial Manager: Ray Hill

Hon Doctors: Dr. G. Radcliffe, Dr. D. Atherton

Dental Surgeon: Mr. N. Gibbison

Physiotherapists: Mr. N. Hodgson, Mr. A. Bonnelle (adviser)

Assistant Physiotherapist: Mr. J. Watkins

Coach: Andy Goodway

'Football Manager: Alan McCurrie

Alliance Coach: Dennis McHugh

Academy Manager: Brian Gartland

Hon. Consultant Orthopaedic Surgeons:

Mr. H. Thompson, Mr. D. Walker

Official Timekeeper: Mr. J. Roscoe

Hon. Safety Officer: Roger Norriss

### Club Records

**Record Victory:** 67-6 v Liverpool City  
April 1959

**Record Defeat:** 11-67 by Hull K.R.  
September 1978

**Record Attendance:** 28,000 v Huddersfield  
24th February 1912

**Record Receipts:** £37,505.50 v Wigan  
5th October 1989

**Record Transfer:** £70,000 to Halifax for  
Tony Anderson  
March 1990

**Record Try:** Ref Farrar, 49 Tries,  
Scorer: 1921-22 season

**Record Goal:** Bernard Ganley,  
Scorer: 224 goals, 1957-58  
season

### Club Records continued...

**Record Point:** Bernard Ganley,  
Scorer: 28 points v  
Liverpool City,  
April 1959

**First Game:** 21st October 1876  
v Stalybridge

**Highest Number:** Bernard Ganley, 2,881  
of Points Scored

**Most Appearances:** Joe Ferguson, 685  
Pre 1900 Jach Hirst 233  
Since 1900  
Alan Davies 182

# FROM THE BOARDROOM

## BY CHAIRMAN JIM QUINN

A visit by Leeds to Watersheddings always provides us with one of our best and most prestigious games of the season, and this evening's match is no exception.

The game was scheduled for last Sunday, but postponed because Leeds were involved in the quarter final of the Regal Trophy.

Millions of League fans across the country saw Castleford produce a marvellous exhibition on television to disappoint a large Headingley crowd.

Despite this setback, Leeds have emerged in recent weeks as the only genuine challengers to Wigan in the Stones Bitter Championship title race following their breathtaking victory over the Riversiders a week or two ago.

Their defeat by Regal Trophy holders Castleford means they are free to come to Watersheddings this evening in a match which gives Oldham fans the opportunity to see their favourites pitting their strength and skills against men of the undoubted calibre of Alan Tait, Kevin Iro, Craig Innes, Gary Schofield, Esene Faimalo, Richie Eyres and Ellery Hanley, to name but a few.

On behalf of the Oldham Club, I extend a warm Watersheddings welcome to the chairman of the Leeds club, Mr Denis Greenwood, who is at the helm of a club which ranks alongside Wigan as the most fashionable in the Rugby League. Welcome, too, to Chief Executive Alf Davies and to that Headingley stalwart of many years standing, Joe Warham, who invariably takes a trip down memory lane when he comes to Watersheddings with Leeds as he will be remembered with affection

by the more senior of Oldham supporters as a Watersheddings centre or wing threequarter of some repute in the early 1950s.

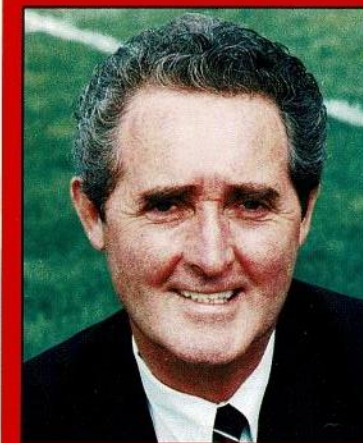
Doug Laughton, the Leeds manager, will forever command a place in the folklore of the Widnes club, if not that of the game as a whole, for his famous trips into the Union market which took Alan Tait, John Devereux, Paul Moriarty and the incomparable Martin Offiah and Jonathan Davies to Naughton Park.

On moving to Leeds, he snapped up Union internationals Jim Fallon (England) and Craig Innes (New Zealand), took Alan Tait from Widnes to Headingley, and signed the biggest name in the English game, Ellery Hanley, to provide the cornerstone of his team.

A Leeds win tonight is important if the Loiners are to continue to snap at the heels of Wigan in the title race, but we did well against them last season, winning here and losing narrowly at Headingley, and you can rest assured that Andy Goodway will have his boys fired up to give their best shot.

Talking of Andy, I think supporters will be pleased to know that we have signed him up until the summer of 1997 on a new, two and a half year contract. Andy has done a splendid job over the first half of the season and has deserved the opportunity to prove that he can become one of the best coaches in the Stones Bitter Championship.

We believe he will play a major role in helping the Oldham club to re-establish itself in the upper half of the top flight and I am delighted to confirm that club and coach have cemented their relationship for the



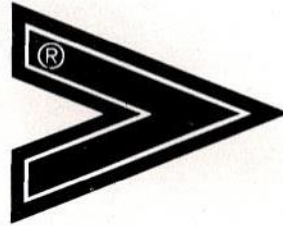
next two seasons. You can rest assured that the board will give him maximum support in his efforts to take Oldham on to bigger and better things.

Your support is also appreciated. It comes from many sources and on this occasion I would like to thank, on behalf of the board, the Supporters Club and the Broadbent Group of companies for kitting out our Academy team in new gear of the second half of the season. Support like that is very much appreciated, as is the continued support we receive from clubs in the local amateur scene. As you know, Waterhead were involved in sponsorship of our last home game against Workington and St Anne's did likewise at a game prior to that. Hollinwood have also helped us by allowing us to play Academy games on their pitch when Watersheddings is not available and all these gestures confirm the partnership that is now being developed at all levels to foster Rugby League Football in the town.

WATCH THIS SPACE FOR THE NEW CLUBCALL NUMBER.

WATCH THIS SPACE FOR THE NEW CLUBCALL NUMBER

TODAY'S MATCHBALL SUPPLIED BY



**Mitre**®

MITRE SPORTS INTERNATIONAL LTD.  
BIRKBY, HUDDERSFIELD, HD1 5AJ. TEL: 0484 537488. FAX: 0484 530042

A GENESCO Company  
G



**The Kit Choice of Champions.**

WATCH THIS SPACE FOR THE NEW CLUBCALL NUMBER.

# CLOSE UP ON LEEDS

## Our visitors in detail

**ALAN TAIT (Full back)**  
Scottish born full back who has represented his country on numerous occasions. Great attacking full back who likes to interlink into the back line. Moved from Widnes to Leeds in August 1992.

**JIM FALLON (Winger)**  
Jim signed for Leeds in May 1992, before that time he played for Bath Rugby Union Club. A very powerfully built winger who can be devastating close to the line.

**KEVIN IRO (Centre)**  
At over 15 stones, Kevin is one of the most powerfully built centres in the Rugby League world. Former young Kiwi star who moved on to full international status for his native New Zealand. Has previously played in this country for Wigan for four seasons from 1988 to 1991. Played club rugby in Australia for Manly-Warringah. Joined Leeds from Manly in September 1992.

**CRAIG INNES (Centre)**  
Former New Zealand All Black International. Joined Leeds in January 1992. Speedy, strong runner and sound tackler with outstanding ball handling skills, a great crowd pleaser!

**FRANCIS CUMMINGS (Utility back)**  
Signed by Leeds from Dewsbury St. John Fisher Amateur Club in the summer of 1993. A quality three quarter who possesses great speed off the mark and a superb football brain. Toured Australia with the Great Britain academy squad during the summer of 1994. Francis became the youngest ever player to appear in a Wembley Challenge Cup final when Leeds played Wigan in last seasons Challenge Cup final when he was only 17 years old.

**GARRY SCHOFIELD (Stand off)**  
A top player in the world of Rugby League. Moved from Hull to Leeds in October 1987. A Great Britain tourist at the age of 18 in 1984. Captained Great Britain on the 1992 Lions Tour. In June 1994 was awarded the OBE for his services to Rugby League.

**GRAHAM HOLROYD (Stand off)**  
Signed by Leeds from amateur team Siddal in the summer of 1992. Made his Leeds debut at 18 years of age against Sheffield Eagles and has established himself as a regular first teamer. Graham possesses superb handling and tactical kicking skills and a great football brain. Toured with the Great Britain Academy side to Australia in 1994.

**JAMES LOWES (Hooker)**  
Leeds born. Progressed from the Hunslet Parkside team to join Hunslet R.L.F.C. as a professional. Moved to Leeds from Hunslet

in September 1992. After another superb first season for Leeds, James was among the best hookers in the First Division.

**NEIL HARMON (Prop forward)**  
Signed by Leeds in August 1993 from the Warrington club. A young powerhouse forward on the verge of international honours. Was an ever present member of Leeds squad all of last season which included an appearance at Wembley for him.

**HARVEY HOWARD (Prop forward)**  
Signed by Leeds from Widnes in January 1994. Harvey is in the mould of a modern day forward possessing power, pace and good handling skills. Harvey had a superb season with Leeds and became an influential figure in the first team squad and an instant hit with the Leeds supporters.

**GEORGE MANN (Forward)**  
One of Doug Laughtons latest recruits signing from St. Helens in July 1994. A tremendous powerful forward with great all round skills and good mobility. A player with vast experience in the "Big League" George will prove a great asset to the Leeds team.

**ESENE FAIMALO (Forward)**  
Another summer capture by Doug Laughton, Leeds signed this blockbusting forward from Widnes in July 1994. Esene is a forward with a tremendous turn of pace and has an excellent workrate. He loves breaking the line out wide with his abundance of skill. Toured Great Britain and France with 1989 New Zealand tourists. A great capture for Leeds.

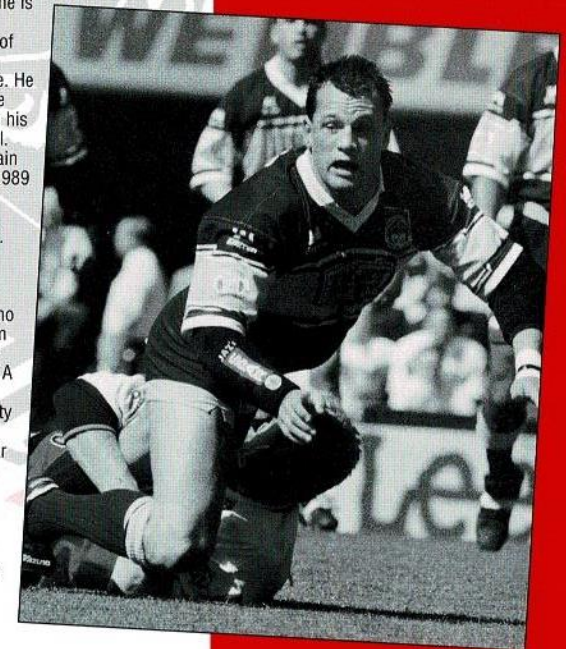
**GARY MERCER (Second row)**  
New Zealander who Leeds signed from Warrington in the summer of 1992. A very mobile forward with plenty of pace. Voted Leeds RLFC Player of the Year last season for his outstanding performances during the 1993-94 season. Also a current New Zealand International.

**RICHIE EYRES (Second row)**  
A second row signed by Leeds from Widnes in August 1993. Had a very good first season with Leeds which was capped by a Wembley appearance and he also appeared in two tests for Great Britain against New Zealand. Richard should prove a great asset in the Loiners quest for glory this season.

**ELLERY HANLEY (Loose forward)**  
The current Leeds captain and player/coach. One of the worlds greatest Rugby League players. Brilliant strength, speed and stamina. Ellery possess a wealth of knowledge of the game. Former Great Britain captain. Ellery was awarded the MBE in January 1990 for his services to Rugby League.

**DOUG LAUGHTON (Coach)**  
Doug joined Leeds in 1991 from Widnes where he had his most successful period as a coach winning the Championship and Premiership on numerous occasions. Doug has taken Leeds to Regal Final and last season took Leeds to the Challenge Cup final narrowly missing out to Wigan. Doug hopes Leeds can go one better this season and lift a major trophy!!

Below: Gary Mercer in action in last season's challenge Cup final at Wembley against Wigan.



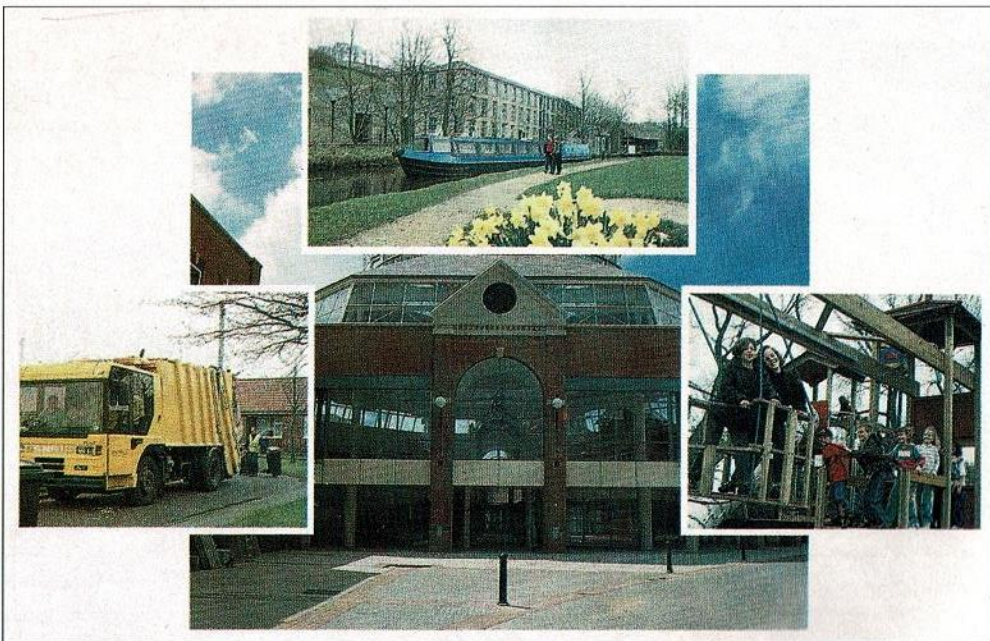
WATCH THIS SPACE FOR THE NEW CLUBCALL NUMBER

## Tackling the issues...



### on all fronts!

Employment and economic development, education, the environment, housing, recreation and culture, social services, roads and transport plus a good deal more!



Enquiries about Council services and policies to the Chief Executive's Department  
Telephone: 061-911-4708

## GOODWAY & McCURRIE

Welcome to this hastily rearranged game against Leeds.

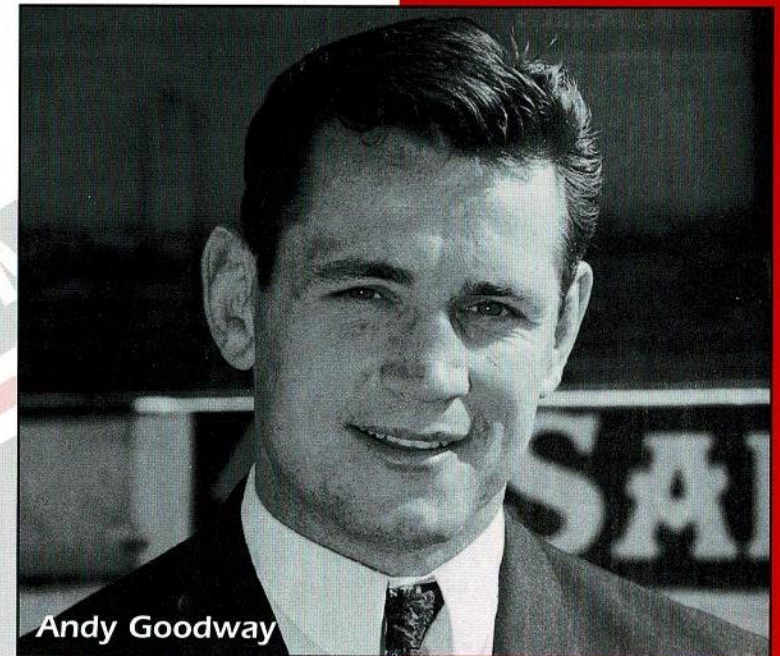
We received our best Christmas present with wins against Salford and Workington and we have begun to show some of the consistency we require. As with all things our consistency will be tested in tonight's game. We are looking for a strong performance to back up and consolidate our Christmas/New Year performances.

The Workington game was a creditable game in arctic conditions but we were delighted to 1) play the game 2) win the game.

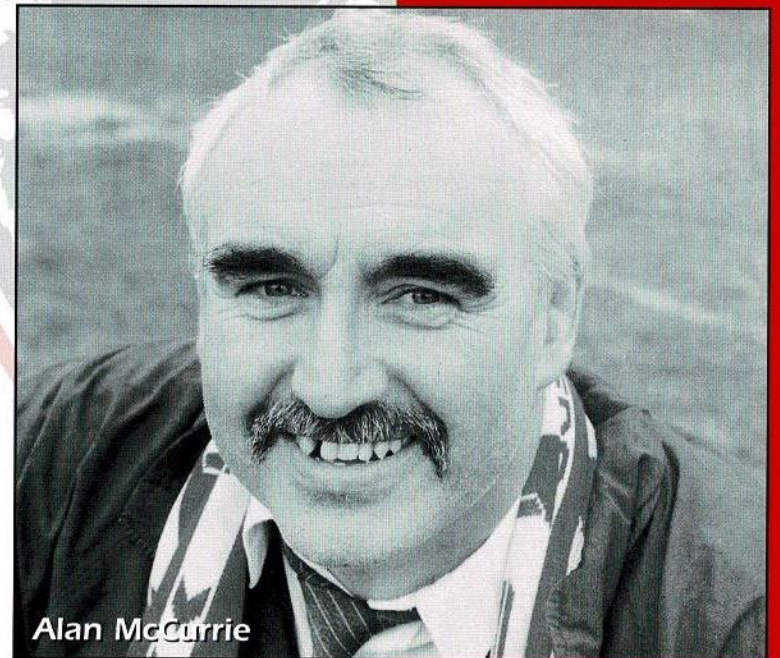
There was good news and bad news. The good news was the way in which we constantly broke the Workington defence. The bad news was that we missed four gilt edged chances.

Often we do not have that luxury and its an area of our game which will improve.

Tonight we welcome Leeds. They will be disappointed at their Regal Trophy exit and determined to continue their recent good League form. We are looking forward to the contest as a game to win and prove our credentials as Premiership contenders.



Andy Goodway



Alan McCurrie

WATCH THIS SPACE FOR THE NEW CLUBCALL NUMBER.

# ROUGHYED MERCHANDISE

**NEW REPLIC SHIRTS AVAILABLE**

**Come into the CLUB SHOP and see all the new stock. A lot to choose from and plenty of bargains to be had...**

REPLIC SHIRTS	Adults . . . . .34.99	Lined Bomber Jacket . . . . .	49.99
	Childrens . . . . .29.99	Roll Neck Sweater . . . . .	20.00
	up to 32	White Dress Shirts . . . . .	15.00
TRACKSUITS	Adults . . . . .54.99	Oldham Rugby Towels . . . . .	5.00
	Childrens . . . . .49.99	Key Rings . . . . .	2.50
	up to 32	Roughyeds Long Sleeve Sweatshirts . . . . .	25.00
Roughyed T-Shirts	Boys . . . . .12.00	Roughyeds Short Sleeve Sweatshirts . . . . .	21.99
	M. EXL . . . . .16.00	Polo Shirts . . . . .	15.99
Roughyed Sweatshirts	Boys . . . . .19.50	Shorts . . . . .	12.99
	M. EXL . . . . .25.00	Shorts . . . . .	14.99
Mitre & Oldham	Rugby Balls . . . . .10.00	Framed Pictures of Watershedding . . . . .	45.00 each
	Mini Balls . . . . .3.99	originals limited editon	
Rugby Nuts	. . . . .5.99	Framed Picture of Rugby League Legends . . . . .	25.00 each
Belts (Oldham rugby leather)	. . . . .15.00		
Car Sticker	. . . . .2.00		
Hats & Scarves	. . . . .2.00 each		
Umbrella	. . . . .5.50		
Pennants	. . . . .5.00		

**SHOP OPENING HOURS:-**  
 Mon to Fri: 9.30am to 4.00pm  
 Saturday: 10.00am to 2.00pm  
 Matchday: 1.00pm to 3.00pm  
 4.30pm to 5.00pm

## ROUGHYED TELEPHONE ORDERS

**THIS SERVICE IS AVAILABLE**



**061 624 4865**

**WAITING TO ARRIVE**  
 BASEBALL CAPS ■ NEW CAR STICKERS  
 BRONX HATS ■ CLUB TIES



Mark Cheetham of Tanfield (Oldham) Limited hands the keys of the sponsored car to John Watkins. Jason Temu and Joe Faimalo look on.

### Tanfield (Oldham) Limited

125 Chamber Road  
 Oldham  
 Lancashire  
 OL8 1AA  
 Tel: 061-633 4872  
 061-627 0435  
 Fax: 061-627 0448



### Tanfield (Oldham) Limited

and

### Oldham Rugby League Club

*working together*

# BUSINESS TALK

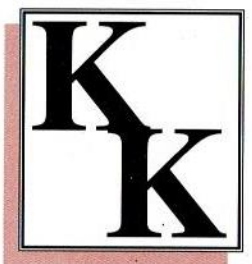
with Ray Hill

Good evening to all our supporters and to all the Leeds fans who have made the journey across the Pennines for this evenings match which as you know had to be rescheduled due to the Regal Trophy game which involved Leeds last Saturday. It makes it very difficult on the commercial side of things to get organised in such a short space of time and a big thank you to our sponsors for tonights game who have carried on with there support

for the club at such short notice.

## THE PARROTT IS COMING

We have now got a date for our dinner and cabaret night. It will be held at the Birch Hall Hotel Lees on Friday the 24th of March. Tickets are priced at £20 each and a great night is in prospect featuring Sid the Parrot supported by Marvo the Magician and Ramblin Stan.



## KEVIN KERSHAW ASSOCIATES

Commercial,  
 Criminal & Private  
 Investigations

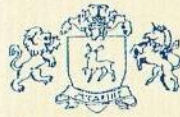
Suite 3, Good Hope House, Bentinck St Ashton-Under-Lyne, Lancashire OL6 7SL

Telephone:  
 061-343 6510  
 Mobile:  
 0374 455905  
 Fax  
 061-339-0046



Pictured above is David Mellor handing keys to Mike Kuiti with Jason Temu and Joe Fiamalo looking on

WATCH THIS SPACE FOR THE NEW CLUBCALL NUMBER



# McCarthy's Catering

CELEBRATING A WEDDING, ANNIVERSARY, 18TH, 21ST OR EVEN A SPORTSMEN DINNER, WE CAN OFFER AN EXTENSIVE SELECTION OF HOT AND COLD FOOD

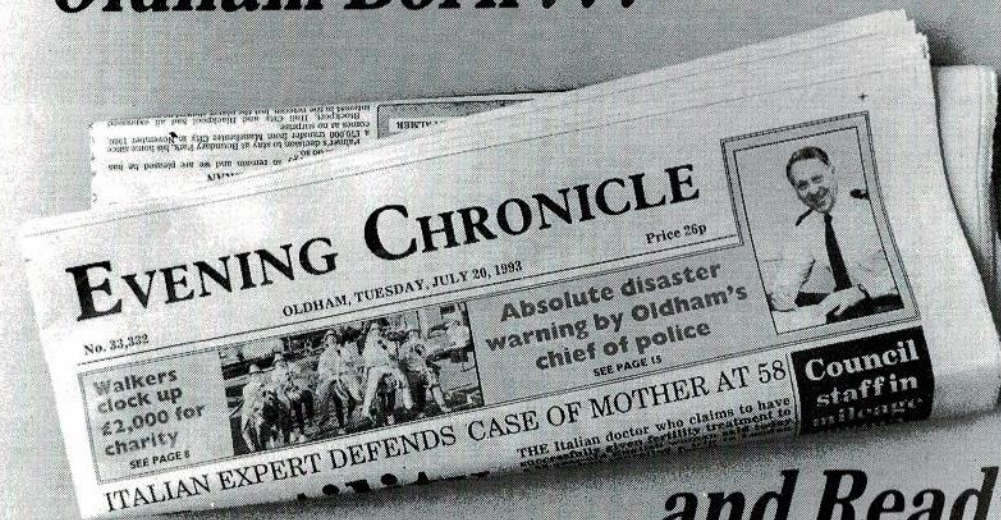


COMMERCIAL ENQUIRIES VERY WELCOME

## 0457 832607

VALE MILL LODGE, HUDDERSFIELD ROAD, MICKLEHURST, MOSSLEY

## 'Oldham Born ...



## ... and Read'

"WHEN YOU AIM FOR PERFECTION YOU DISCOVER IT IS A MOVING TARGET."  
- Joseph Crossman

# GRASS ROOTS ROUGHYEDS

## A LOOK AT THE LOCAL AMATEUR RUGBY SCENE

What an eventful year 1994 was for local amateur rugby. Higginshaw won the Standard Cup for the first time since 1960 but it was a record thirteenth success for Higginshaw in this most prestigious of competitions. The semi-finals of this years competition are scheduled for later this month with the final, as ever, being staged here at Watersheddings on Good Friday morning. St.Annes not only gained promotion in their first season of National Conference football, they lifted the Second Division Championship in impressive style. This season they reached the Lancashire Cup Final for the first time since 1962 and they produced a magnificent performance in that final to push mighty Woolston Rovers all the way. They may have lost that final but they won the praise of both spectators and officials. Saddleworth Rangers ended the season in customary style,

with a major trophy ending up at Shaw Hall Bank Road. Last season it was the BNFL National Cup which they lifted after thrashing Thatto Heath 33-8 in the final. The success enjoyed by Saddleworth and St.Annes resulted in five players from those two clubs turning professional. Chris Churm left Saints for Rochdale Hornets while Mick Gill went further afield and is now playing for Cannes down in the South of France. Rochdale also snapped up Steve Maudsley from Saddleworth. Paul Garrett and Barry Greenwood also left Rangers for Bramley. Although Saints have been able to cope adequately with these defections, Rangers have not enjoyed their customary league success and currently lie within the lower half of the Premier Division. Both clubs have also been eliminated from the Silk Cut Challenge Cup before reaching the lucrative third round stage. However, neither

club is in danger of relegation and Saints still have an outside chance of promotion. They are at home to Dewsbury Celtic on Saturday, 21st January in their quest to reach the Premier Division. The following Saturday, 28th January, both clubs enter the BNFL National Cup at the third round stage. Watch the local press for details of their ties in what is the largest rugby league competition in the World and which features entries from 187 teams. The final of that competition is set for Bank Holiday Monday, 29th May although there is plenty of amateur action, both locally and internationally before then. The BARLA national side entertain France at Hull on Sunday, 5th February before undertaking a two test tour of South Africa the following month. Altogether a bright and exciting outlook to 1995.

Don Yates

### BEE FAMILY FINANCE

IF YOU REQUIRE CREDIT FOR

- Household Goods
- Carpets
- Furniture
- TV's
- Car repairs etc

We can also arrange credit facilities for leading fashion shops in Oldham and Manchester

A family business that looks after your family's needs  
**JUST CALL IN AT THE BEE FOR FRIENDLY ADVICE**  
Telephone: 624 9908

WATCH THIS SPACE FOR THE NEW CLUBCALL NUMBER



Colourplan  
design & print

Colourplan  
design & print

Designers and Printers of the Oldham RLFC Matchday Magazine  
11 Waterside Court, St. Helens Technology Campus, St. Helens, WA9 1UA  
Tel: (0744) 723868 Fax: (0744) 754416/753029

# TONIGHT'S BIG MATCH SPONSORS

## EXECUTIVE GUEST SPONSOR

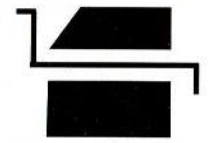
**HAMMOND  
SUDDARDS**  
SOLICITORS

2 Park Lane  
Leeds LS3 1ES  
Telephone: (0113) 234 3500  
Telex: 517201  
DX No. 26441  
Fax: (0113) 234 3600

## MAN OF THE MATCH

**KEVIN  
KERSHAW  
ASSOCIATES**

## MATCHBALL



**DEREK ANTHONY  
LIMITED**

SHEETMETAL & STRUCTURAL  
STEEL FABRICATORS

Units 4 & 5, Whiteswan Industrial  
Estate, Derker St.,  
Oldham OL1 3LY  
Tel: 061 627 4200  
Fax: 061 627 3616

# PAUL ABBOTT LIMITED SPRINGHEAD GARAGE

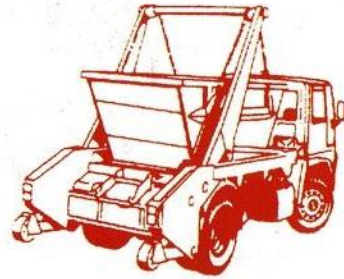
*Quality Used Cars  
and First Class Servicing*

**TEL: 0161 624 2725  
FAX: 0161 624 5128**

WATCH THIS SPACE FOR THE NEW CLUBCALL NUMBER

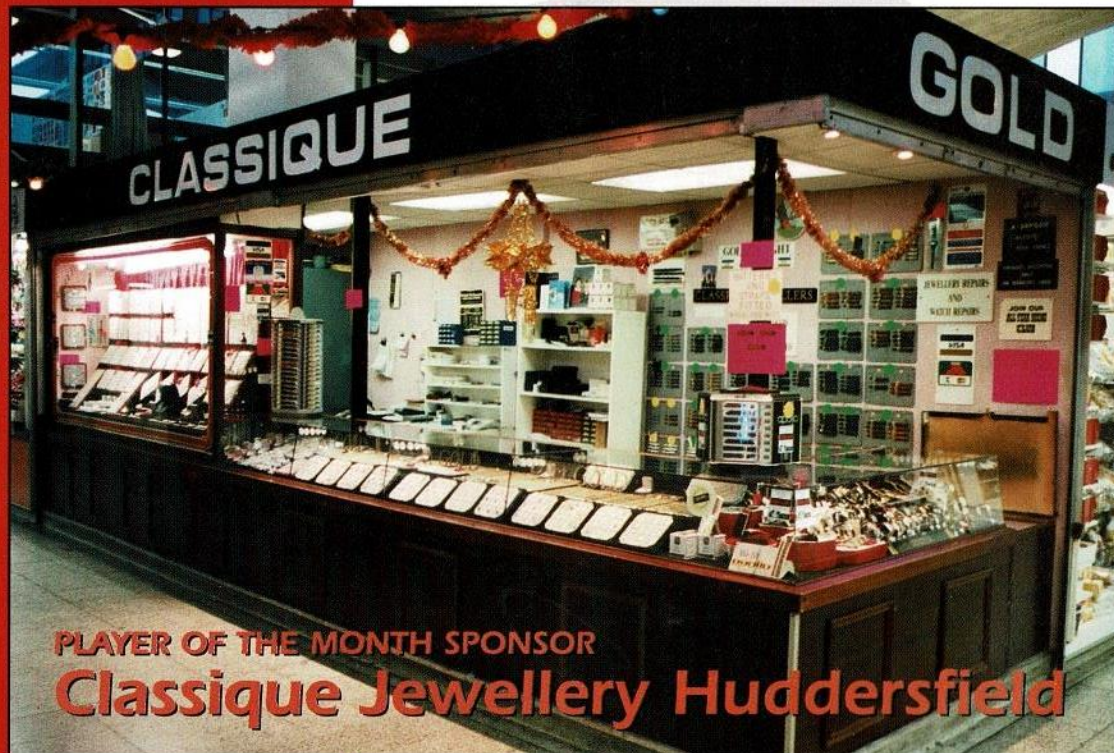
# HOLROYD Skip Hire Ltd.

DIGGER & TRACKED  
MACHINE HIRE



**YOUR FIRST CHOICE IN  
WASTE REMOVAL**

TELEPHONE:  
**061-642 1118 OR 061-624 1311**  
EVENINGS FAX:  
**061-624 1171**  
LITTLE END FARM, MOORSIDE, OLDHAM.



PLAYER OF THE MONTH SPONSOR  
**Classique Jewellery Huddersfield**

"THE SURE WAY TO BE LATE IS TO HAVE PLENTY OF TIME"  
- Mark Twain.

# CASH **BIG LEAGUE** BONANZA

OLDHAM RUGBY LEAGUE FOOTBALL CLUB

**JOIN NOW**  
**£1500**  
**won every week**

YOUR CHANCE TO WIN £1000 A WEEK ▪ £100 A DAY MONDAY TO FRIDAY  
FOR ONLY £1 PER WEEK ▪ NOW AN EXTRA £100 IN PRIZE MONEY PER WEEK

Payable by Banker's Order or collected at your place of work, local pub  
or newsagent. Why not become an agent yourself and earn  
generous commission?

## WEEK 52

<b>£1000</b> Winner: F6306 Agent:	B. Pearce J. Bradbury	<b>EXTRA £10 BONUS PRIZE</b> Winner: H3765	I. Durkin
<b>Monday £100</b> Winner: A2079 Agent:	J. Wright M. Vickerstaff	Winner: G1365	M. Garry
<b>Tuesday £100</b> Winner: H4992 Agent:	P. Radcliffe Meridian Centre	Winner: A9975	J. Hill
<b>Wednesday £100</b> Winner: D7660 Agent:	D. Ellidge M. Allingham	Winner: B3485	D. Bullock
<b>Thursday £100</b> Winner: C7615 Agent:	J. & L. Turton F. Hall	Winner: C9901	A. Whitehead
<b>Friday £100</b> Winner: F3875 Agent:	C. Lonsdale P. Hilton	Winner: E4302	E. Calvin Thomas
		Winner: D8469	J. Sutton
		Winner: C4430	G. Hilton
		Winner: F6345	I. Turner
		Winner: A1982	I. McGiffen

£50 Agents Prize Draw: 227 - Lydgate News

**CASH BONANZA HOTLINE 061 620 4870**

WATCH THIS SPACE FOR THE NEW CLUBCALL NUMBER.



# MALCOLM LORD

THE FACE BEHIND THE VOICE OF BBC GMR'S RUGBY LEAGUE

## CONGRATULATIONS IN ORDER

So often programme notes or newspaper headlines tend to be about the clubs or people occupying the top four places. Well I'd like to spread the spotlight a little wider - to Keighley and more particularly Cougar Park and its coach Phil Larder.

Phil, I'm sure, raised more than a few eye-brows when he left Widnes for Keighley and despite seeing several internationals sold and the heart ripped out of his Chemic's side, I'm sure most people would have considered it still a large step downwards.

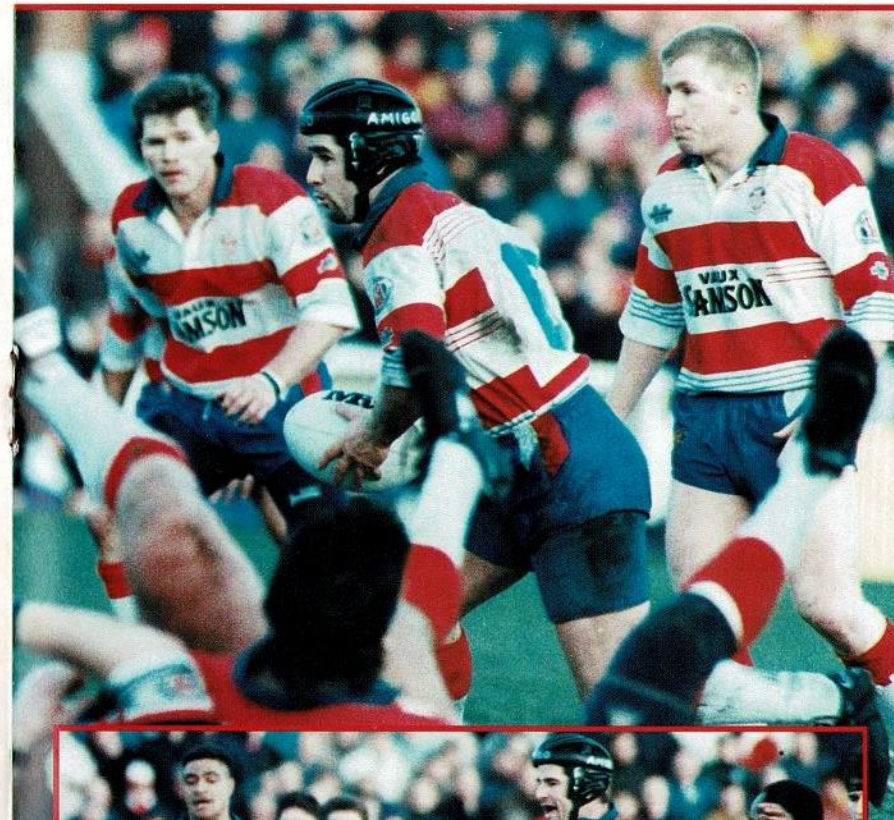
Once again though Phil proved what a shrewd judge he is - his side are riding high at the moment, first division football a high probability and what's more this town is buzzing.

The whole club appear to have got it right and every one of them has my congratulations. I haven't visited the place for a couple of years now but memory tells me that the hospitality was always second to none and I wish both club and coach the best of luck.

## MANIAC OR HERO

I soon recovered from the Xmas and New Year revelry when I heard the story of how, over the Yuletide period, a totally nude man was seen to be making midnight dashes in the vicinity of Odsal Stadium. Now, leaving apart the obvious (why would anybody be at Odsal Stadium at midnight?), it did provide a couple of questions - first of all, what could you possibly gain by doing such a thing? and secondly, what had he been drinking immediately prior to these sprints. We will probably never find out the answer to the first question and I'm not bothered about the second, providing that is, he shares the secret - I wonder if it refreshes the parts .....

*Malcolm Lord - BBC GMR*



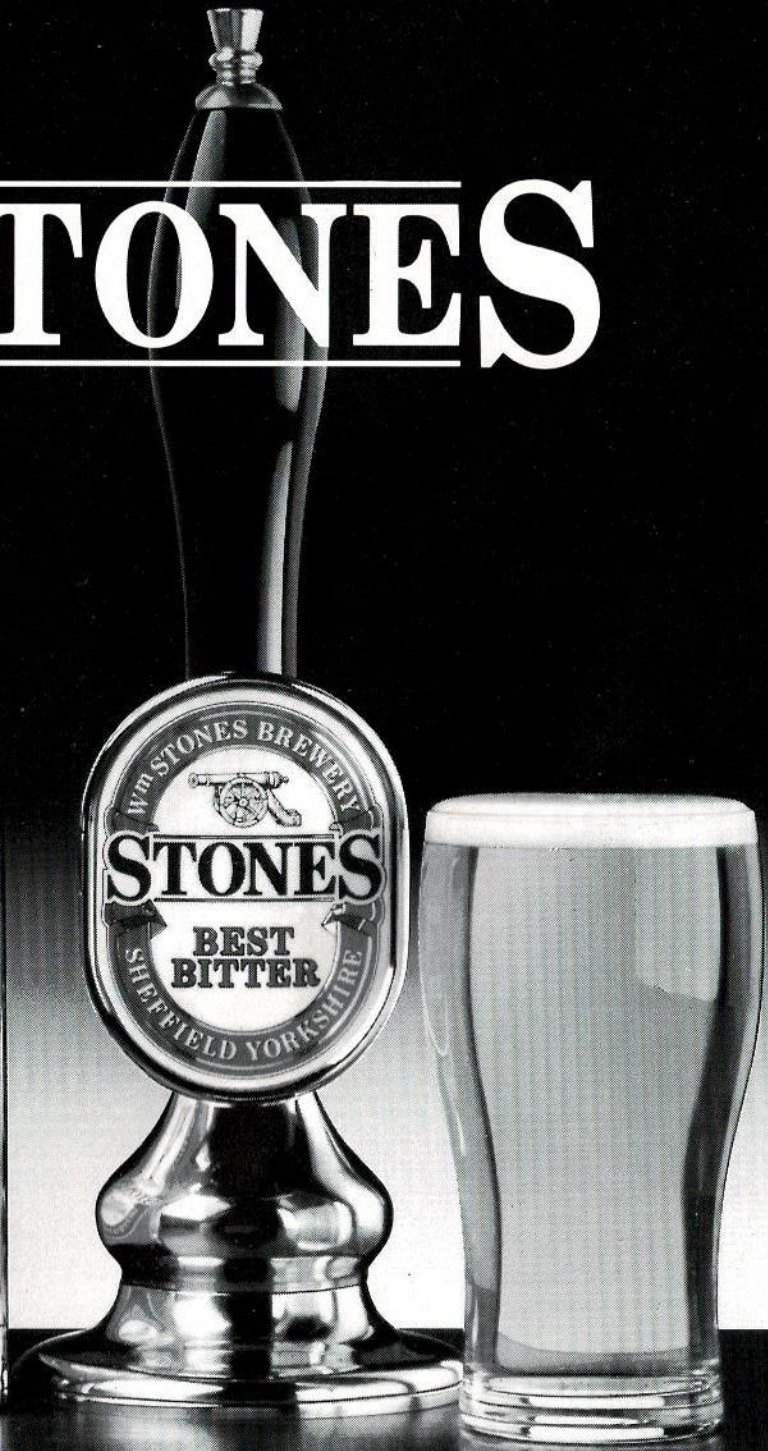
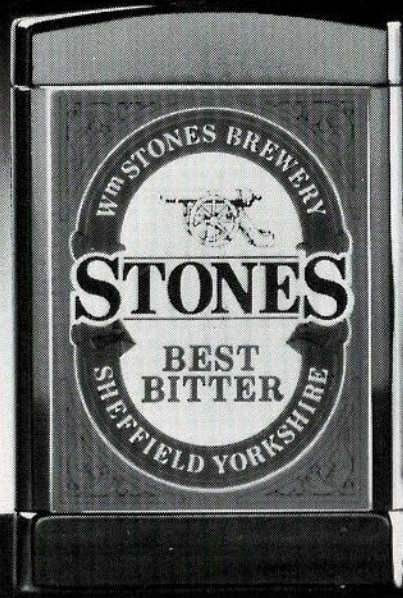
**Above:** Paul Topping on the charge with Darren and Martin in support.

**Centre:** Ian Sherrat drives in hard against Workington.

**Bottom:** Scott Ranson completes his hat-trick against Workington

# ACTION REPLAY

# STONES



THE MAJOR SPONSOR OF RUGBY LEAGUE.

## Sponsorship & Hospitality Packages 1994/95



During the year we hold many fundraising and promotional events for companies.

Why not sponsor the whole event? This includes all publicity material carrying your company message or logo, photograph in the local press and matchday programme. Also the opportunity to discuss your product or service with a 'captive' audience.

This Years Events Include:-

### GOLF TOURNAMENT

A day out for guests or colleagues at a local golfing venue. Enjoy the chance of winning a new car for a hole-in-one at a designated hole. This together with a meal after your round and a prize giving ceremony with a comedian or speaker makes the whole day one to remember.

### SPORTSMANS EVENINGS

After the success of our last two dinners tickets are in great demand. Again supported by local media and businesses gives you and your company the opportunity of entertaining guests for a full evening of quality. Quality food, quality wine, quality speakers.

### LUNCHEON CLUB

This year for those who feel unable to attend the Sportsmans Dinners in the evenings, they will have the opportunity to 'socialise' with clients or colleagues over a lunch which also has a celebrity speaker. The ideal way to mix business and pleasure, combining the highest quality cuisine, celebrity speaker and an afternoons entertainment.

### PROMOTE YOUR COMPANY

This is a unique concept to Rugby League and one we feel will be very successful. The idea comes from America and it is quite simple.

At each home game a company 'Gives' away merchandise (agreed between ourselves) this could be:

Umbrellas • Baseball Caps • Pens • Radios (Quantities to be agreed)

The list is endless

Each gift will have the name of your company on it and also something connecting it with Oldham R.L.F.C.

These items and games are advertised in advance and this will encourage children, adults and families to attend in the hope of getting a 'gift'.

The choice of gifts are endless these can range from pin badges or T-shirts to shaving kits or umbrellas.

### TICKETS

During the season we accept that every game is not going to be a 'sell out'. So we have decided to sell these tickets to companies at greatly reduced prices. The tickets are only for standing areas and cannot be exchanged for seats.

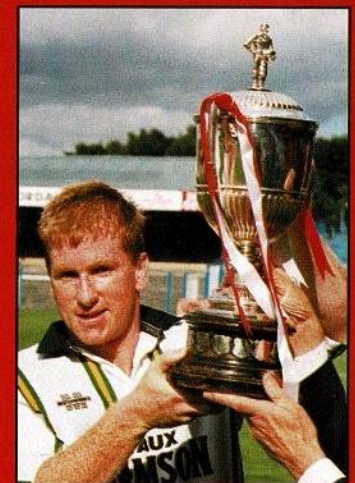
The regular ticket prices are – Adult £6.00 – Child/OAP £3.00

These tickets can be used as prizes, or simply public relation exercises.

The tickets will be available for the following games:

Doncaster • Workington T. • Wakefield T. • Sheffield E. • Hull

The tickets are available in 100's



Martin Crompton  
Receives the Law Cup

### 1994/95 HOSPITALITY PRICE LIST

Type of Package	Match	Executive	Man of the Match	Match ball		
Number of Guests	20*1	10*2	4*3	4*3		
Date	Versus	K. Off				
21/8	Halifax	3.00pm	£1,400	£750	£275	£275
4/9	Wigan	3.00pm	£2,000	£1,000	£350	£350
18/9	Doncaster	3.00pm	£1,100	£650	£275	£275
2/10	St. Helens	3.00pm	£1,500	£800	£300	£300
14/10	Widnes	7.30pm	£1,400	£750	£275	£275
30/10	Featherstone	3.00pm	£1,250	£700	£275	£275
22/11	Bradford	7.30pm	£1,500	£800	£300	£300
11/12	Warrington	3.00pm	£1,400	£750	£300	£300
1995						
1/1	Workington	3.00pm	£1,100	£650	£275	£275
8/1	Leeds	3.00pm	£1,400	£750	£275	£275
22/1	Sheffield E	3.00pm	£1,250	£700	£275	£275
5/2	Hull	3.00pm	£1,250	£700	£275	£275
5/3	Wakefield T	3.00pm	£1,250	£700	£275	£275
26/3	Castleford	3.00pm	£1,500	£800	£300	£300
14/4	Salford	7.30pm	£1,250	£700	£275	£275

Prices Exclude VAT

Cost per head for extra guests – \*1 £60 – \*2 £60 – \*3 £50

"THE WILL TO WIN IS NOT NEARLY AS IMPORTANT AS THE WILL TO PREPARE TO WIN"

- Bobby Knight

# THE GROWING GAME

Development News Supported by P.Casey and Co and Sportsmatch

Applications for entry into the Oldham Schools Cup have now been received. Once again the tournament will be sponsored by Quantum Sports and Leisure who will provide trophies and medals. I am delighted that the competition has expanded this year and will include 22 Junior School Teams.

- 13 Year 7
- 14 Year 8
- 11 Year 9
- 10 Year 10
- 10 Year 11
- 5 Sixth Forms

This gives a total of 85 entries or approximately 1500 players from age 9 to 19. Within the entries there are several stories of strong Oldham Rugby League Club links. For example St. Annes, Greenacres will be coached


by former pupil Barrie McDermott, Lyndhurst will be coached by former pupil Ian Sherratt. Alts have been coached by Academy Manager Brian Gartland and several schools have come under the guidance of Mike Kiuti.

There is also a strong influence from local Amateur clubs with Saddleworth Rangers staff coaching St. Annes, Lydgate. Heyside Eagles helping out at Blackshaw Lane. Salem Hornets helping at Alts, St. Annes at Parish Church etc etc. All of this shows some of the spirit of co-operation which is required to promote Junior Rugby League in Oldham.

The Cup finals will be played here at Watersheddings in the first week of May on two big bonanza rugby league nights.

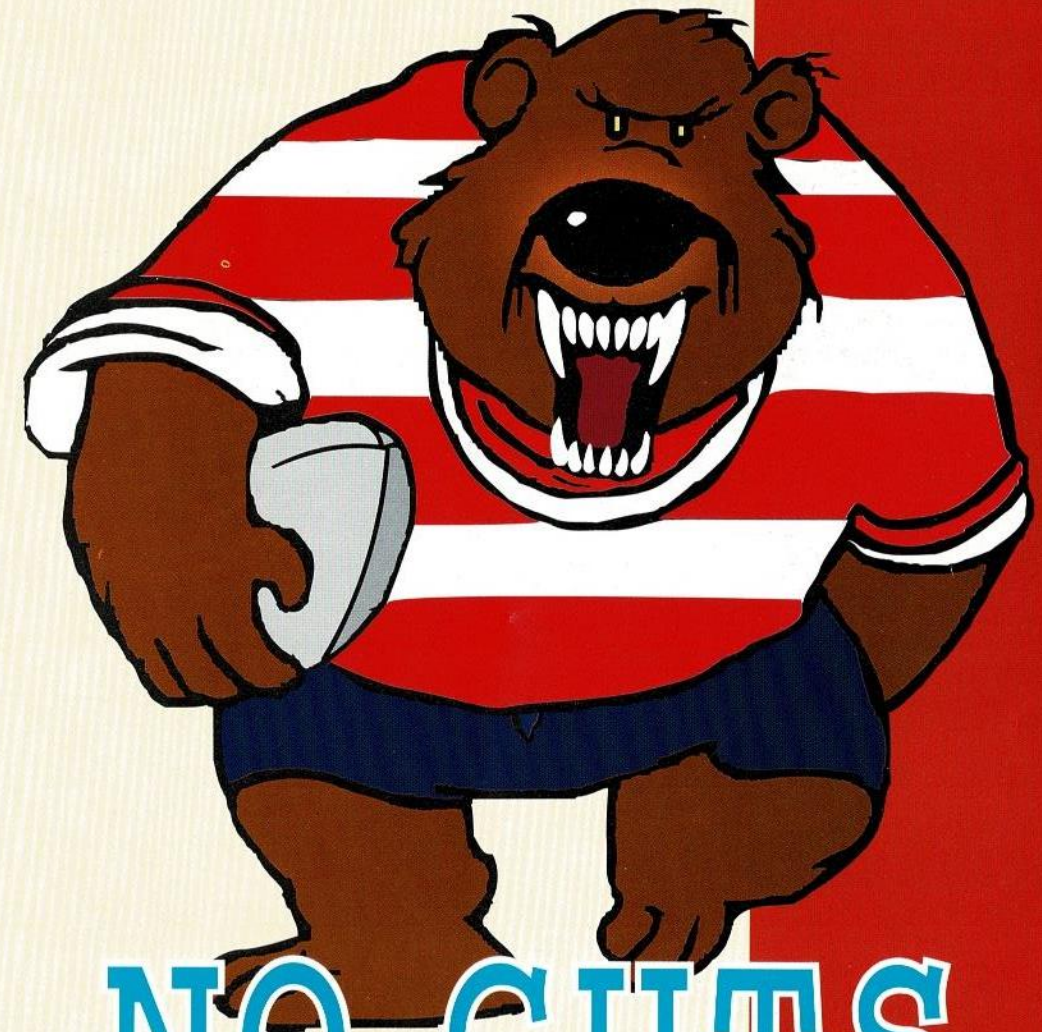
All the competitions this year are straight knock out with first and second round losers in the junior schools playing in a plate competition. Tonights rearranged game against Leeds means that a planned 'Matchmates' type festival between Under 8's and Under 9's from Oldham and Leeds has had to be postponed. After several hasty phone calls on Saturday after the Regal Trophy I hope that Under 9's teams from Waterhead, Saddleworth, St. Annes, Shaw, Salem and Royton Tigers will play in the curtain raiser.

*Enjoy the evening.*

 **PRO-ENVIRONMENT**  
The Casey Group of Companies  
PO Box 54, Rydings Road  
Wardle, Rochdale  
Lancashire OL12 9PS  
Tel:(0706) 341121  
Fax:(0706) 861156

**SPORTS**  
  
**MATCH**  
BUSINESS BACKING SPORT

WATCH THIS SPACE FOR THE NEW CLUBCALL NUMBER

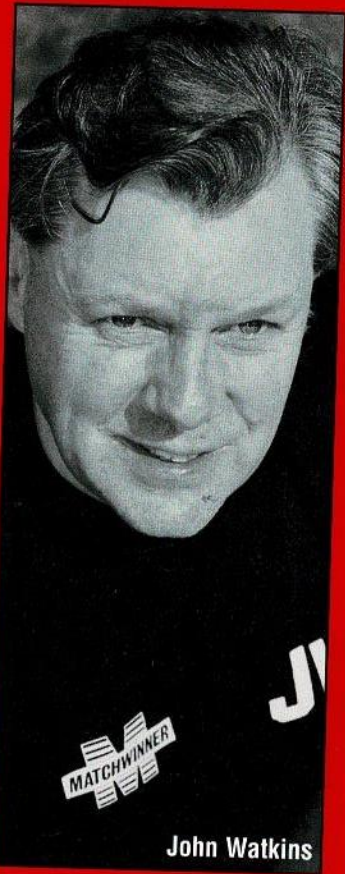


# NO GUTS NO GLORY

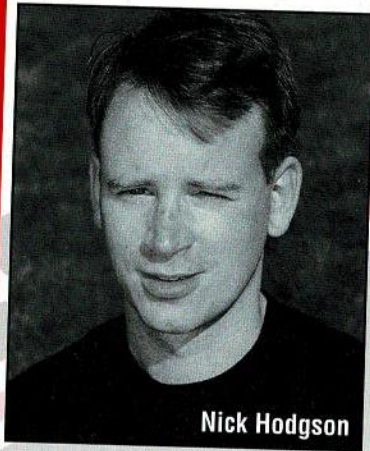
"IT IS ONLY EIGHTEEN INCHES BETWEEN A PAT ON THE BACK AND A KICK IN THE PANTS." - Joseph Crossman

# INJURY UPDATE

## FROM THE TREATMENT ROOM



John Watkins



Nick Hodgson

We are often asked what is the most common injury in Rugby League and without checking I would have said "Dead Legs". However on looking back over the first part of this season, the most frequently seen condition in the treatment room has been "low backstrain". Dead legs and shoulder injuries come a close

second and third while ankle, neck and thumb injuries also figure highly.

Less common so far this season have been knee and groin strains. This is quite fortunate as both can keep players out for lengthy spells.

I have always said that most injuries occur due to freak accidents. Even in an intensively physical game as Rugby League ie Tiny's broken arm and Nigel Heslop's jaw. Some are intentionally inflicted.

Many others due to the pressure of playing week in week out maybe carrying slight knocks. Anyway the treatment room has been fairly quite so far this year apart from the regulars (no names as they slipped me a fiver).

Lets hope it stays that way.

## TRAVELLING AWAY WITH THE ROUGHYEDS

**DUE TO CASTLEFORD'S INVOLVEMENT IN THE REGAL TROPHY SEMI FINALS OUR TRIP TO WHELDON ROAD HAS HAD TO BE RE-ARRANGED AND WILL NOW TAKE PLACE ON WEDNESDAY 1st FEBRUARY WITH A 7.30pm KICK OFF**

Directions for Wheldon Road are as follows: Join M62 Junction 31 (A655) Follow signs Castleford A655 • (Edge of) Castleford at roundabout take 2nd exit in 1.2 miles at roundabout take 2nd exit in 0.2 mile at roundabout take 2nd exit into Wheldon Road unclassified for Castleford RL Ground (on right)

WATCH THIS SPACE FOR THE NEW CLUBCALL NUMBER

Nº 34000 R Nº 34000

**THE GREAT RUGBY LEAGUE GOLDEN GAMBLE**

**WIN UP TO £2000**

50% of proceeds up to a maximum of £2000 paid to the winner  
50% of proceeds go directly to help your club

**GUARANTEED WINNER EVERY GAME**

Ticket €1.00

**BUY YOUR GOLDEN GAMBLE TICKET NOW!!!**

**It could be a WINNER**

# RUGBY League WEEKEND



## DELTA CARS

HILL STORES

156 HUDDERSFEILD ROAD  
OLDHAM

061 627 2277

"A GREAT ACTOR CAN BRING TEARS TO YOUR EYES, BUT THEN SO CAN A MECHANIC"  
- Donald Reber

# DUNCANS OF OLDHAM

## OLDHAMS ONLY MAIN DEALER

FOR

# VOLVO

061-624 2404



061-628 6200

# HYUNDAI

061-624 2404

**FIRST FOR SALES · SERVICE  
& PARTS**

**ALWAYS A HUGE SELECTION OF TOP CLASS  
NEW, USED & DEMONSTRATORS AVAILABLE**

## ALL ON ONE SITE

ROCHDALE ROAD · OLDHAM · OL1 1NU · OPPOSITE CIVIC CENTRE

## FROM SMALL 'A' CORNS GROW

A look at our Alliance and Academy teams

Our last game of 1994 produced an excellent performance from the Alliance squad and we went three points clear at the top of the League. To come away from Hull with a win is very pleasing, but we did it in style with a 33 points to 16 points defeat of a strong Hull side. Tries were scored by David Bradbury (2) Martin Holden, David Jones, Steve Gartland and Howard Hill. Craig Booth kicked two goals, Wilson Marsh kicked two and Steve Gartland dropped a goal. Our forwards dominated the Hull 6 making much greater yardage and achieved an aggressive defensive organisation throughout. This enabled our half backs to capitalise with some scintillating plays as the ball ran freely amongst the backs. That win put us in good heart for our visit to Wigan in the Challenge Cup 1st round, scheduled for Thursday, 5th January 1995. However Wigan

called the game off on the 5th because of a "waterlogged pitch" and the game has been re-arranged for Monday 9th January 1995. Next Friday the 13th January 1995 we are scheduled to play Castleford at home in a League game. This has been postponed and to press another date has not been re-arranged. Possibilities of Saturday 14th January, we shall inform the press as soon as confirmation is given. In terms of games lost, Castleford are our nearest rivals, having lost four to our three, so this game is of vital importance to us. However they say that winning becomes a habit and the lads certainly have the winning habit at the moment. Bring your friends along to our next match, you'll be welcome and I'm sure, will enjoy the game.

### ALLIANCE FIRST DIVISION

DATE	OPPONENT	VENUE	K.O.	RES
August				
19th	Halifax	A	7.30	W36-12
26th	Bradford N	H	7.30	W32-26
September				
1st	Blank weekend			
2nd	Wigan	A	7.30	W26-21
10th	Warrington	H	7.30	L10-32
16th	Dewsbury	H	7.30	W20-12
24th	St. Helens LCC Shield RD1		7.30	W46-22
30th	St. Helens	A	7.30	W42-38
October				
8th	Thatto Heath LCC Shield RD2			W61-12
14th	Ryedale Y	A	7.30	W46-29
27th	Widnes LCC Shield Semi			W30-10
28th	Featherstone R	A	7.30	L22-37
29th	YSC Cup & LCC Shield - Semi Finals			
November				
4th	Halifax	H	7.30	W25-10
10th	Dewsbury	A	7.30	
12th	Wigan LCC Shield Final			L10-24
18th	Wakefield T	H	7.30	W28-8
25th	Wigan	H	7.30	W36-6
30th	Leeds	A	7.30	L18-31
December				
9th	Warrington	A	7.30	post
16th	Salford	H	7.30	W44-14
24th	Blank weekend			
30th	Hull	A	8.00	W33-16
January				
9th	Wigan (All. C. C. R1)	A	7.30	
13th	Castleford (T.B.A)			
20th	Featherstone R	H	7.30	
28th	Alliance Challenge Cup - Second Round			
February				
1st	Bradford N	A	7.30	
10th	Salford	A	8.00	
17th	St. Helens	H	7.30	
18th	Alliance Challenge Cup - Third Round			
24th	Hull	H	8.00	
March				
2nd	Wakefield T	A	7.30	
10th	Leeds	H	7.30	
11th	Alliance Challenge Cup - Semi Finals			
17th	Ryedale Y	H	7.30	
23rd	Castleford	A	7.30	

## NEIL GIBBISON

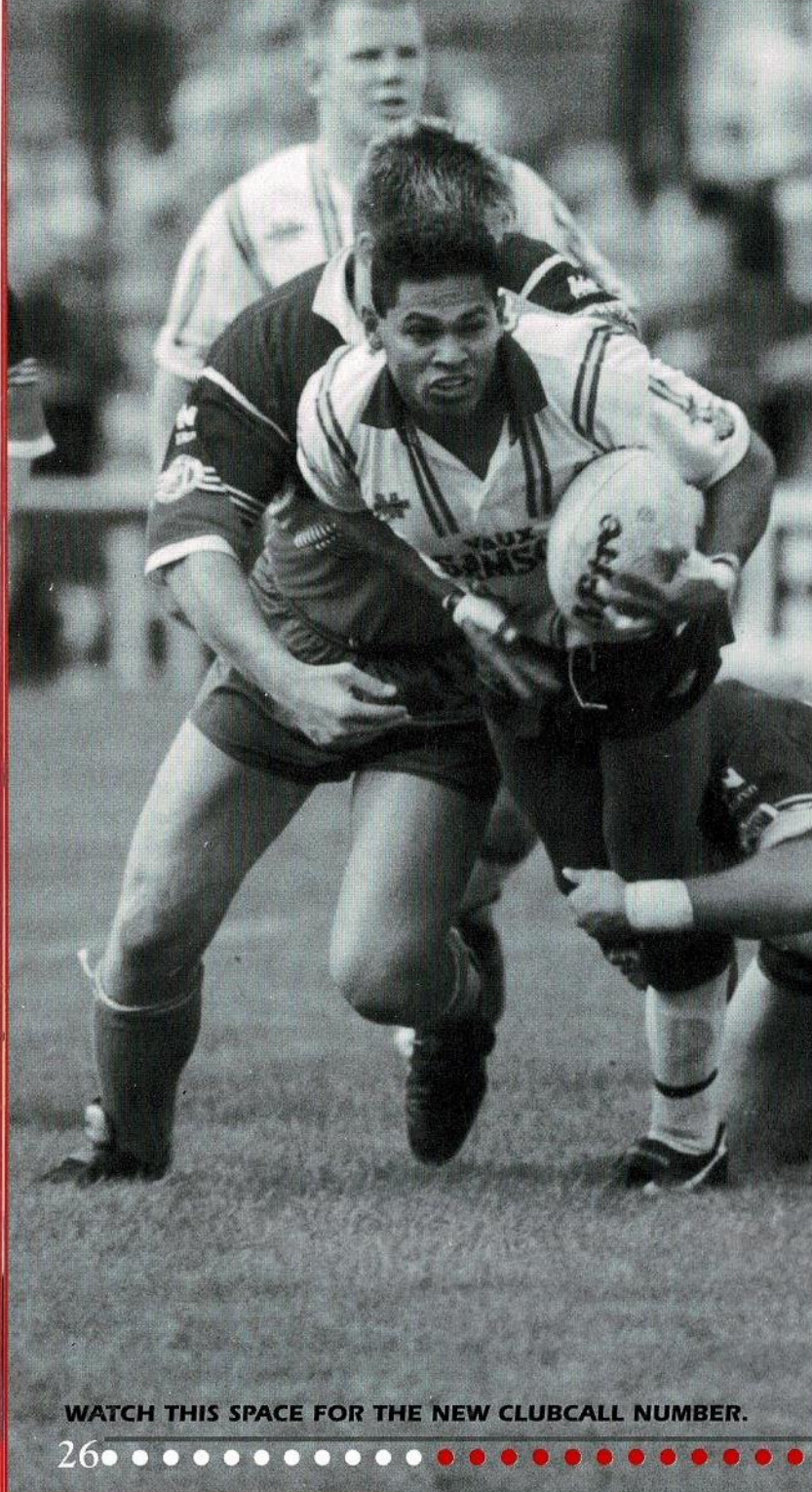
B.D.S., V.U. Manc.

### Dental Surgeon

36 Oldham Road Uppermill Oldham OL3 6HV Telephone: 0457 872108

# RUFF E. HEAD

THE MAN IN THE KNOW - IAN WILSON



“ New Year is a time both to look back and to look ahead. Where do we now stand? On almost all criteria, I would have thought the club is in a much healthier position than at this time last year with a 50% improvement compared with the equivalent games during 1993. We have just achieved three consecutive league victories, something which never happened last season. How about a new target of 22 points by the time we get involved in the RL Cup. ”

“ Cause and effect are often difficult to work out, but team selection consistency and playing success are surely linked. Whereas by this stage of last season, 29 players had represented the club, with only Mike Kuiti being an ever-present, this season has seen just 24 players, with no fewer than 7 being ever-present - and Topping, Temu and Faimalo have also not missed a game since their first one. This must bring major benefits in individual confidence. ”

“ The only pessimistic, aspect as far as I can see, concerns attendances. With an average of 4,000, we seem to have lost 650 spectators per match compared with the first half of last season. Why? The chairman put forward what I thought were very persuasive explanations in the New Years Day programme, and went on to argue for summer rugby, and a mid-March to mid-November season. ”

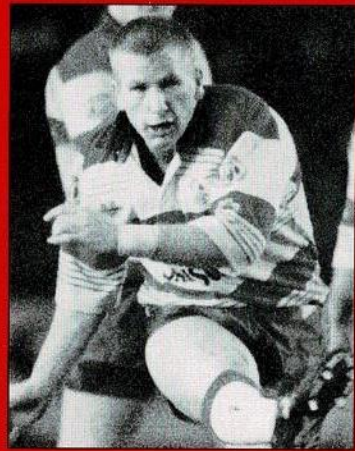
WATCH THIS SPACE FOR THE NEW CLUBCALL NUMBER.



# TRY AGAIN!

**VAUX SAMSON - ITS STRENGTH IS ITS TASTE**

# STATISTICALLY SPEAKING 1994-95



## NEWS ON FORMER OLDHAM PLAYERS

It was good to see Bob Marsden on Boxing Day back in Salford's first team squad after an appearance in the Salford A team at Watersheddings the previous week. Bob a Shaw lad born and bred started his Oldham career in September 1983 having signed from Shaw ARLFC U17s and made a big impression in Brian Gartlands Colts team that year. Bob went on to play regularly in the Oldham A team but struggled to break through into the senior squad at Oldham and after making nine appearances in Oldham's first team was transferred to Rochdale Hornets in the 1988-89. for five thousand pounds becoming a regular member of the Hornets pack before joining Salford.



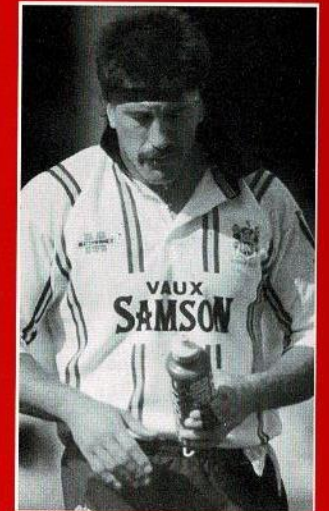
DATE	OPPONENT	K.O	Res																	
AUGUST																				
21st	Halifax	3.00	L 20-40	Gibson	Jones	Irwin	Abram	T Ranson												
28th	Bradford Northern	3.00	L 14-36	Gibson T	Jones	Irwin	Abram	Ranson												
SEPTEMBER																				
4th	Wigan	3.00	L 58-10	Gibson T	Jones	Irwin T	Abram	Ranson												
SEPTEMBER																				
11th	Warrington	3.00	L 55-6	Heslop	Jones	Irwin	Abram	Ranson												
18th	Doncaster	3.00	W 44-8	Heslop T	Jones	Irwin T	Abram T	Ranson												
25th	Hull	3.15	W 21-17	Heslop	Jones T	Irwin	Abram T	Ranson												
OCTOBER																				
2nd	St. Helens	3.00	D 18-18	Heslop	Jones T	Irwin	Abram	Ranson												
9th	Wakefield Trinity	3.30	L 16-21	Heslop	Jones	Irwin	Abram	Ranson												
14th	Widnes (BSKYB)	7.30	W 29-0	Gibson	Jones	Irwin T	Abram T	Ranson												
30th	Featherstone Rovers	3.00	L 10-20	Gibson	Jones	Irwin	Abrams T	Ranson												
NOVEMBER																				
6th	Halifax	3.00	L 34-8	Gibson	Heslop	Irwin	Abram T	Ranson												
22nd	Bradford Northern	7.30	W32-12	Gibson 2T	Jones	Irwin	Abram 2T	Ranson												
27th	Wigan	3.00	L 46-0	Gibson	Jones	Irwin	Abram	Ranson												
DECEMBER																				
4th	Hull K.R. (RT Rd2)	3.00	W 28-0	Gibson	Jones T	Irwin T	Abram CT	Ranson C												
11th	Warrington	3.00	W 52-22	Gibson	Jones	Irwin	Abram T	Ranson												
18th	Widnes (RT Rd3)	3.00	L 6-20	Gibson	Jones	Irwin T	Abram	Ranson												
26th	Salford	3.00	W 16-12	Gibson	Belle (T)	Irwin	Abram	Ranson												
JANUARY																				
1st	Workington Town	3.00	W 20-10	Gibson	Belle	Irwin	Abram	Ranson												
8th	Leeds	3.00																		
15th	Castleford	3.30																		
22nd	Sheffield Eagles	3.00																		
29th	Doncaster	3.00																		
FEBRUARY																				
5th	Hull	3.00																		
11th	Silk Cut Challenge Cup (Round 4)																			
19th	St. Helens	3.00																		
25th	Silk Cup Challenge Cup (Round 5)																			
MARCH																				
5th	Wakefield Trinity	3.00																		
11th	Silk Cut Challenge Cup (Round 6)																			
19th	Widnes	3.00																		
26th	Castleford	3.00																		
APRIL																				
2nd	Leeds	3.30																		
9th	Sheffield Eagles 3.15																			
14th	Salford	3.00																		
17th	Workington Town	3.00																		
23rd	Featherstone Rovers	3.30																		

STONES BITTER CHAMPIONSHIP									
DIVISION 1									
	P	W	D	L	F	A	Pts		
Wigan	16	15	0	1	598	232	30		
Leeds	16	13	1	2	463	295	27		
Bradford N.	17	12	1	4	446	272	25		
Halifax	16	11	1	4	445	251	23		
St. Helens	16	11	1	4	438	317	23		
Castleford	15	10	2	3	430	260	22		
Warrington	17	10	1	6	403	286	21		
Oldham	16	7	1	8	316	409	15		
Salford	17	6	1	10	370	392	13		
Sheffield	16	5	0	11	303	402	10		
Doncaster	15	4	1	10	228	399	9		
Widnes	16	4	1	11	194	396	9		
Wakefield	15	4	0	11	197	432	8		
Featherstone	16	3	1	12	304	382	7		
Hull	16	3	1	12	272	434	7		
Workington	16	3	1	12	215	463	7		

HOME FIXTURES ARE DENOTED IN BOLD CAPITAL LETTERS

WATCH THIS SPACE FOR THE NEW CLUBCALL NUMBER

Gartland G6	Crompton	Sherratt	Clarke	Parr	Lord	Davidson	Kuiti	Richards T	Heslop
Gartland G1	Crompton	Sherratt	Clarke	Parr	Lord	Davidson	Kuiti	Richards T2	Heslop
Gartland G1	Crompton T	Sherratt	Clarke	Richards	Lord	Davidson	Kuiti	Parr	Topping
Gartland G1	Crompton T	Sherratt	Clarke	Parr	Lord	Davidson	Kuiti	Richards	Faimalo
Topping T 6g	Crompton 2T	Sherratt	Clarke	Parr	Lord T	Faimalo T	Kuiti	Richards	Gartland
Topping 4g	Crompton 1dg	Sherratt	Clarke	Faimalo	Lord	Green	Kuiti	Gartland	Davidson
Topping 5g	Crompton	Sherratt	Clarke	Parr	Lord T	Faimalo	Kuiti	Gibson	Temu
Topping 3g	Crompton T	Sherratt	Clarke	Temu	Lord	Faimalo	Kuiti 2T	Davidson	Gibson
Topping 4g	Crompton TDg	Sherratt	Clarke	Parr	Lord T	Faimalo	Kuiti	Heslop	Temu
Topping 3g	Crompton	Sherratt	Clarke	Temu	Faimalo	Lord	Kuiti	Heslop	Parr
Topping	Crompton	Sherratt	Clarke	Temu T	Lord	Faimalo	Kuiti	Jones	Norman
Topping 3g	Crompton 2dg	Sherratt	Clarke T	Temu	Lord T	Faimalo	Kuiti	Green	Bradbury
Topping	Crompton	Sherratt	Clarke	Temu	Lord	Faimalo	Kuiti	Green	Bradbury
Topping 4g	Crompton	Sherratt	Stephenson	Temu	Lord	Faimalo T	Kuiti	Green	Bradbury
Topping 2f 8g	Crompton T	Sherratt	Stephenson	Temu	Lord	Faimalo	Kuiti T	Marsh T	Green 2T
Topping g	Crompton	Sherratt	Clarke	Temu	Faimalo	Lord	Kuiti	Marsh	Green
Topping 4g	Crompton T	Sherratt	Clarke	Temu	Lord	Fiamalo	Kuiti	Marsh	Davidson
Topping 2g	Crompton	Sherratt	Clarke	Temu	Lord	Fiamalo	Kuiti IT	Gartland	Davidson



MIKE KUITI IN CONTENTION FOR PLAYER OF THE YEAR AWARD... with 35 points so far

## CLASSIQUE JEWELLERS PLAYER OF THE MONTH MERIT AWARD

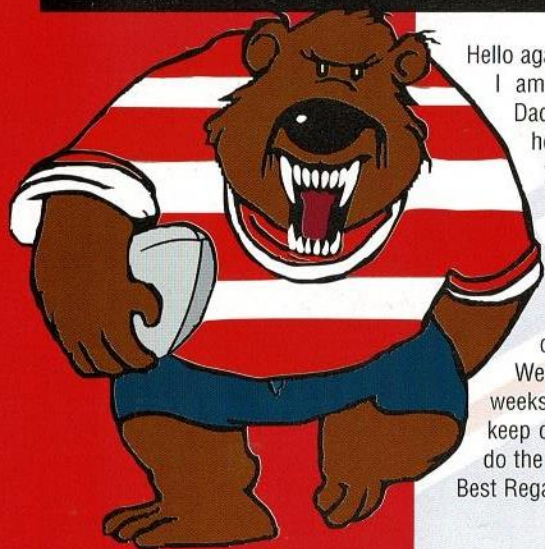
V SALFORD	
TEMU	5
KUITI	3
FIAMALO	1

DECEMBER PLAYER OF THE MONTH.....JASON TEMU  
Jason received an engraved medal, a jewellery voucher and a cheque for £50

## CLASSIQUE JEWELLERS PLAYER OF THE YEAR AWARD

Present Positions	
Kuiti	35
Crompton	28
Clarke	23

# JUNIOR ROUGHYEDS



Hello again and HELP!!  
I am looking for any Mums and Dads with a few hours to spare, to help me organise some of this years events.  
These will hopefully include the Christmas party, a Sponsored walk, and maybe a couple of outings.  
So if you can help please contact Sue on 061 681 3397.  
Well done to the lads on last weeks win against Workington. Lets keep cheering and hopefully we can do the same against Leeds tonight.

Best Regards

Sue Collinge

## SUPPORTERS CLUB

On Saturday 11th February 1995 the Supporters Club are holding a St. Valentines Dinner and Disco, at the Village Manor Restaurant in Uppermill, at 7.30 for 8pm. Tickets are priced at £12.50 each. Anybody wishing to attend should contact any Supporters Club Official.  
Please help to make this a successful evening, and hopefully this may become an annual event.  
Thank you for your support.

Alice Collinge (Chairperson)

# ACADEMY NEWS

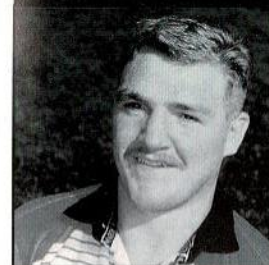
First of all congratulations are offered to two of our young players. The first one being Chris McKinney who has been selected for the Great Britain Academy squad to play France at Salford on Tuesday 7th February kick off 7.30pm well done Chris may this be the first of many honours for you in your

professional career. The other player is one who has yet to play in our Academy side due to his age being under 16 years but the player in question, Joe McNicholas has been selected for the English Schools trg squad after playing well in the trials held at Robin Park, Wigan.  
Again lets hope Joe goes on

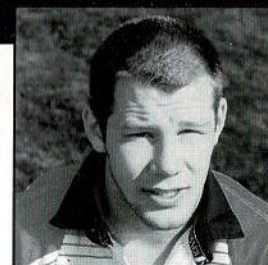
to get many more honours which I am sure he will because he is a very dedicated player. At the time of these notes our game against Rochdale due to take place tonight (Monday) has had to be cancelled due to the bad weather and the first team being at home on the Wednesday.

WATCH THIS SPACE FOR THE NEW CLUBCALL NUMBER

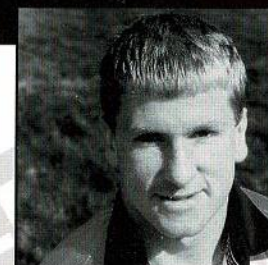
# PLAYER SPONSORSHIP



IAN SHERRATT  
Bill & Brenda Rogers



JOHN CLARKE  
Arc Electrical



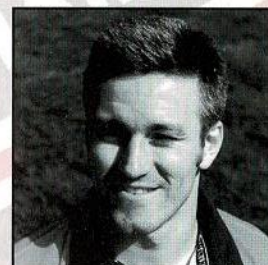
MARTIN CROMPTON  
Charleswood Bedrooms



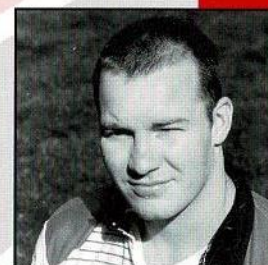
WALLY GIBSON  
Specsavers



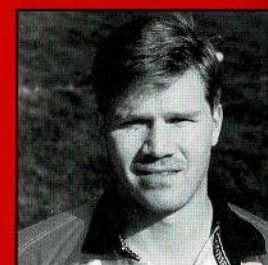
SHAUN IRWIN  
Shaun & Pat Whelan



NIGEL HESLOP  
Alex Hammond



CHRIS PARR  
Irene & Helen Calow



DARREN ABRAM  
COCKFIELD FARM

## WE'VE CURED HEADACHES FOR THE ROUGHYEDS



Manufacturers of upholstery fillings for over a century, Platt & Hill make foam and fibre fillings of the highest quality right here in Oldham.

So reliable are our products, that Oldham RLFC have selected them to cushion the uprights of their goal posts.

In a way, you see, we've prevented headaches all round!

**PLATT & HILL**  
FOAM AND FIBRE FILLINGS

FIBRE FILLINGS DIVISION,  
Belgrave Mill, Keswick Avenue,  
Oldham, Lancs OL8 2LZ  
Tel: 061-626 4638 Telex: 669550  
Fax: 061-627 3265

WATCH THIS SPACE FOR THE NEW CLUBCALL NUMBER.