

TONIGHTS LINE UP

ROUGHYEDS

EAGLES

- 1 Wally Gibson
- 2 Adrian Belle
- 3 Darren Abrams
- 4 Shawn Irwin
- 5 Scott Ranson
- 6 Paul Topping
- 7 Martin Crompton
- 8 Ian Sherratt
- 9 John Clarke
- 10 Jason Temu
- 11 Joe Faimalo
- 12 Gary Lord
- 13 Mike Kuiti

- 14 T.B.A.
- 15 T.B.A.

Colours: Red & White

- 1 Daryl Powell
- 2 Dave Mann
- 3 Mark Gamson
- 4 Keith Senior
- 5 Laurent Lucchese
- 6 Richard Price
- 7 Carl Briggs
- 8 Paul Broadbent
- 9 Mick Cook
- 10 Alex Thompson
- 11 Paul Carr
- 12 Ian Hughes
- 13 Anthony Farrell

- 14 T.B.A.
- 15 T.B.A.

Colours: Green & White

Referee: J. Connolly (Wigan)
 Touch Judges: F. Hawley ■
 P. Brooks ■

Big Match Sponsor:
SPEEDYHIRE (OLDHAM)

Associate Match Sponsor:
BROUGHTON CONTROLS

Man of the Match:
BABYLAND

Matchball:
S.J. NORBURY

OFFICIAL CLUB SPONSOR



Sponsored by **W Welcome**

Financial Services Limited, Owl House, 2nd Floor, 59 Great Underbank, Stockport, Cheshire SK1 1NE

NO GUTS NO GLORY

ROUGHYEDS



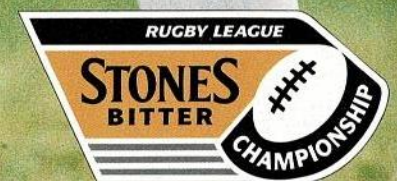
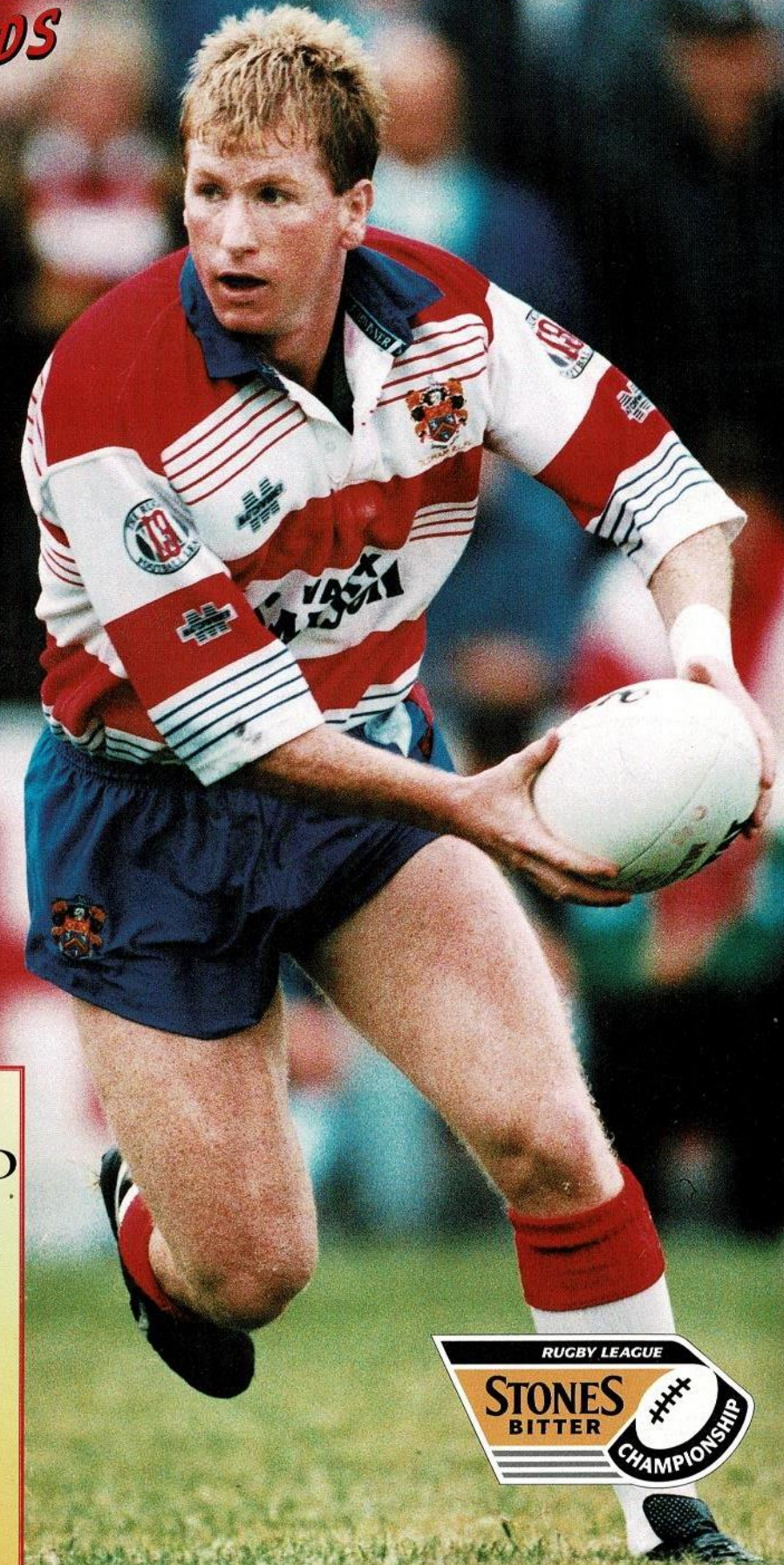
RLFC
 versus
SHEFFIELD EAGLES

Sunday Jan 22nd 1995
 Kick Off 3.00pm

Today's Match Sponsors
 Big Match: Speedy Hire (Oldham)
 Associate Match: Broughton Controls
 Man of the Match: Babyland
 Matchball: S. J. Norbury
 OFFICIAL CLUB SPONSOR



Official Matchday Magazine £1.20



ROLL OF HONOUR

OLDHAM RUGBY LEAGUE FOOTBALL CLUB

CLUB HONOURS

Rugby League Championship Play-off Winners

1909-10, 1910-11, 1956-57

Runners Up

1906-07, 1907-08, 1908-09, 1921-22, 1954-55

First Division Champions

1904-05

Second Division Champions

1963-64, 1981-82, 1987-88

Rugby League Challenge Cup Winners

1898-99, 1924-25, 1926-27

Runners Up

1906-07, 1911-12, 1923-24, 1925-26

Lancashire Cup Winners

1907-08, 1910-11, 1913-14, 1919-20, 1924-25, 1933-34, 1956-57, 1957-58, 1958-59

Runners Up

1908-09, 1911-12, 1918-19, 1921-22, 1954-55, 1966-67, 1968-69, 1986-87, 1989-90

Lancashire Championship Winners

1907-08, 1909-10, 1921-22, 1956-57, 1957-58

Runners Up

1908-09, 1910-11, 1911-12, 1919-20, 1923-34, 1954-55

1975-76, 1979-80

Colts Premiership Trophy

1979-80, 1989-90

Second Division Premiership

1987-88

Wigan Sevens Winners

1991-92



The Pavilion, Watersheddings, Oldham
Telephone: 061 652 5244 & 061 624 4865

Chairman: Jim Quinn

Directors: John Chadwick, Roger Norriss, Mike Winterbottom

General Manager: Terry Donovan

Club Secretary: Karen Scott

Commercial Manager: Ray Hill

Hon Doctors: Dr. G. Radcliffe, Dr. D. Atherton

Dental Surgeon: Mr. N. Gibbison

Physiotherapists: Mr. N. Hodgson, Mr. A. Bonnelle (adviser)

Assistant Physiotherapist: Mr. J. Watkins

Coach: Andy Goodway

Football Manager: Alan McCurrie

Alliance Coach: Dennis McHugh

Academy Manager: Brian Gartland

Hon. Consultant Orthopaedic Surgeons:

Mr. H. Thompson, Mr. D. Walker

Official Timekeeper: Mr. J. Roscoe

Hon. Safety Officer: Roger Norriss

Club Records

Record Victory: 67-6 v Liverpool City
April 1959

Record Defeat: 11-67 by Hull K.R.
September 1978

Record Attendance: 28,000 v Huddersfield
24th February 1912

Record Receipts: £37,505.50 v Wigan
5th October 1989

Record Transfer: £70,000 to Halifax for
Tony Anderson

Fee Paid: March 1990

Record Try: Ref Farrar, 49 Tries,
Scorer: 1921-22 season

Record Goal: Bernard Ganley,
Scorer: 224 goals, 1957-58
season

Club Records continued...

Record Point: Bernard Ganley,
Scorer: 28 points v
Liverpool City,
April 1959

First Game: 21st October 1876
v Stalybridge

Highest Number: Bernard Ganley, 2,881
of Points Scored

Most Appearances: Joe Ferguson, 685

Most Tries: Pre 1900 Jach Hirst 233
Since 1900
Alan Davies 182

FROM THE BOARDROOM

BY CHAIRMAN JIM QUINN

I was preparing to sit down and pen an article on how much we are all looking forward to having our new or refurbished ground when news came through that the main stand was to be closed at Monday evening's Academy game against Huddersfield.

Our worst fears were realised. Part of the timberwork at the front of the stand had given way and local safety officers made an inspection and took the decision to close off the stand completely until such time as necessary repair work had been done to the standard required in the safety certificate. They were quite right to make this decision, of course, and it remained to be seen whether we could get the work done in time to have the stand opened for business as usual at today's Stones Bitter Championship game against Sheffield Eagles.

We keep on trying to stick the old place together as best we can, but we all know that the way forward is to aim for first-class facilities which will not only attract the biggest sponsors of all - YOU, the fans - but will enable the club to make maximum use of corporate facilities which will bring in additional revenue. Wigan and Leeds are probably in a class of their own when it comes to pulling in revenue from maximising their top-rate facilities, but even when we visit smaller clubs, such as Salford for instance, it is an eye-opener to take a look around the club's social facilities before kick-off and see so many rugby league supporters having a meal or enjoying a drink in comfortable surroundings.

Our commercial department, headed by Ray Hill, does a fine job in difficult circumstances to bring in sponsorship aid on match days, but you have only to look at the packed pavilion to see that we have difficulty accommodating all the different groups and thus pulling in the sort of revenue generated by many other clubs.

Our gates have been somewhat disappointing this season, too, and that might also have something to do with the fact that our facilities generally are pretty basic and not the most attractive either from the cosmetic or practical points of view, particularly in the middle of winter.

The sooner we get our improved facilities the better ... and that was further underlined when we had that problem with the main stand last weekend.

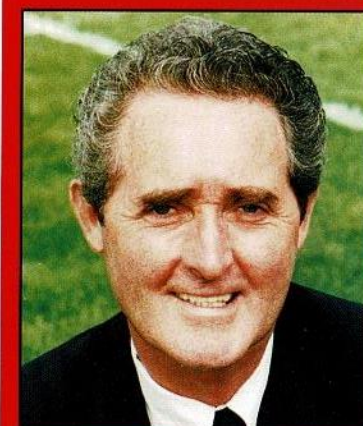
To regular seat holders who turned up at the Academy game expecting to use their regular places in the stand and to more casual customers who might have expected to gain entry into the stand on a wet night, I can only apologise on behalf of the board.

You can rest assured that we will be doing all we can to beat the problem as quickly as possible - both in the short term and the long term.

Turning to football matters, I would like to say "well done" to the first team on producing a fine exhibition of rugby league although losing 21-14 to Leeds last time out, and "congratulations" to the Alliance side on scoring 50 points against Castleford to open up a three-point lead at the top of the first division with a game in hand on second-placed St Helens.

The Academy team beat Huddersfield 32-12 to keep the momentum going at the lower end of the scale while, at the top end, we find there are only seven teams above us in the Big League - Leeds, Wigan, Castleford, Halifax, Bradford, St Helens and Warrington.

We have achieved our results by trying, and often succeeding, to play bright, open rugby to capture the imagination of the fans and we will continue that policy despite our limited financial resources. We are also trying to foster relationships with other rugby organisations in the town at all levels and to that end we welcome all the youngsters who are here



today as guests of the Oldham club from the seven junior clubs scattered around the town. It is good to have you here, boys and girls. We hope to see you again, possibly as members of the Junior Roughyeds and taking advantage of our much publicised Penny Rush scheme which applies to all home league games. A welcome also to Sheffield and to Mr and Mrs Gary Hetherington, who have done a wonderful job in their efforts to push rugby league in Sheffield and surrounding districts. One of the game's success stories in the last decade has been the rise and rise of Sheffield Eagles who are now firmly established in the first division.

They have not done quite so well this season as they did last, but Sheffield have proved a difficult side to beat many times in the past and we expect an equally tough game today. By the way, I should have mentioned when talking about sponsorship at Watersheddings that we are seriously considering a scheme in which we will entertain our backers at a local hotel and lay on transport from the hotel to the ground and back again. Where there's a will there's a way - and I think you will all agree that there is plenty of will in evidence at Watersheddings this season.

WATCH THIS SPACE FOR THE NEW CLUBCALL NUMBER.

WATCH THIS SPACE FOR THE NEW CLUBCALL NUMBER

TODAY'S MATCHBALL SUPPLIED BY



MITRE SPORTS INTERNATIONAL LTD.
BIRKBY, HUDDERSFIELD, HD1 5AJ. TEL: 0484 537488. FAX: 0484 530042

A GENESCO Company



The Kit Choice of Champions.

WATCH THIS SPACE FOR THE NEW CLUBCALL NUMBER.

CLOSE UP ON SHEFFIELD EAGLES

Our visitors in detail

PAUL BROADBENT

Age 26 Height 6.01 Weight 15.09
Signed from Castleford amateur club Lock Lane in 1987 and has made over 200 appearances for the Eagles. Played as tour replacement in Australia in 1992 and made two appearances for the Lions. Has made the Eagles' number 8 jersey virtually his own and figured in both the Eagles' Divisional Premiership wins, scoring a try in 1989 final.

PAUL CARR

Age 27 Height 6.00 Weight 15.07
Australian forward signed from Hunslet in the 1992 close season. Strong running back row forward whose perceptive backing up brings him many tries. In two seasons with the Eagles he has scored 26 tries. Played for South Sydney in the Winfield Cup for three seasons 1989-91.

ANTHONY FARRELL

Age 25 Height 5.09 Weight 14.02 Great Britain U21 Caps 2
Eagles' £55,000 record signing from Huddersfield in 1989, Farrell was unlucky with injuries during the first two seasons at the Eagles. Now settled in the loose forward position he is a powerful force in attack and defence, scoring 13 tries in the last two seasons. His recent form makes a full cap a distinct possibility in the not too distant future.

MARK GAMSON

Age 29 Height 5.10 Weight 12.10
The Eagles' second signing, from Leeds Colts, back in the Eagles' formation year, 1984. One of the most versatile players in the squad, only the prop and second row jerseys having eluded him to date. He has played almost 300 games for the club, only skipper Daryl Powell has played more games for the Eagles. His appearance record includes a club record run of 76 consecutive appearances between 1989 and 1991. Starred in both the Eagles' Divisional Premiership Finals at Old Trafford and was a try scorer in the Yorkshire Cup final defeat in 1992. Last year he successfully converted to full back to fill the gap left by Garry Jack, scoring 8 tries in 31 appearances.

DARYL POWELL

Age 29 Height 5.11 Weight 13.07 GB Caps 25 Eng Caps 1 York Caps 1
The Eagles' skipper and most capped player, he was the only Second Division player to be selected for the Lions' tour in 1992. Signed from Redhill in 1984, he was the club's first signing and has proved himself the model professional during his Eagles' career. Holds the Eagles' try scoring record with 108, including a club record five at Nottingham in January 1989. A knee injury sustained in the match against Castleford kept him out of the

Eagles' two big matches, the tour match against Australia and the Yorkshire Cup Final, as well as ending a run of 19 successive Great Britain appearances by missing the World Cup Final. Scored hat-tricks in both the Divisional Premiership wins of 1989 and 1992, winning the Man of the Match award in the latter final.

RICHARD PRICE

Age 24 Height 5.09 Weight 13.00 GB U-21 Caps 2
He has been an ever present player for the last two seasons and was never substituted. He also holds the club record of 79 consecutive games for the Eagles' a remarkable record. Signed from Hull in March 1991, where he gained U-21 two caps against France in 1989. Played for Hull in the 1989 Premiership Final, staged immediately after the Eagles' own win in the Divisional Final. A classy elusive centre or stand off he scored 16 tries last season.

LYNTON STOTT

Age 23 Height 5.09 Weight 13.07
Signed from Woolston Rangers in Warrington in December 1992. Regarded as one of the best amateur players after switching to Rugby League in 1989. Previously, Lynton had represented Lancashire schoolboys at Rugby Union and had trials for England. His pace and ability from full back suggest a very good career in professional Rugby League and he played 29 games for Eagles last season as a winger scoring 13 tries.

RYAN SHERIDAN

Age 19 Height 5.06 Weight 12.00
Signed from Dewsbury Moor ARLFC in 1991 as an Academy team player. He has represented Great Britain Academy against France and New Zealand and went on this last summers Academy tour to Australia. He is a most promising half back who already has 41 appearances for the first team and he has scored 13 tries to date.

LEE JACKSON

Age 25 Height 6.0 Weight 12.07 GB Caps 14 Eng Caps 1 Yorks Caps 1
One of the most exciting hookers playing in world Rugby League, Lee joined Eagles from Hull FC in September 1993 for a club record signing of £83,000. After a distinguished career with the Airlie Birds that brought him 11 Great Britain caps and two Australian tours, he gained three more Great Britain caps last season with the Eagles. His astute ball distribution and opportunist attacking play considerably increased the Eagles try scoring potential. He played 26 games last season scoring four times himself.

MICK COOK

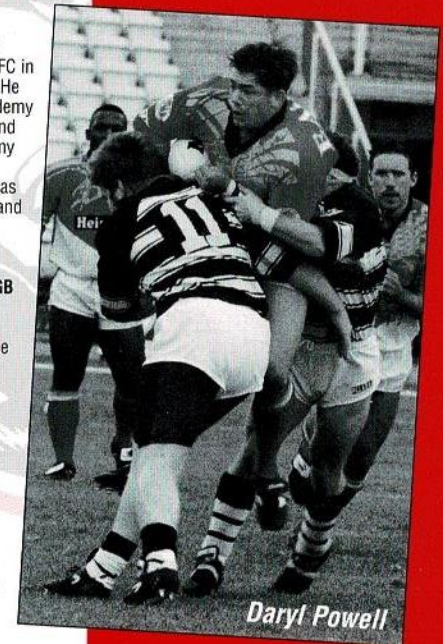
Age 33 Height 5.10 Weight 13.02
One of the Eagles most respected and consistent players. Joined the club from Queens ARLFC in Leeds in 1986 and has made over 200 appearances for the first team including captaining them at Old Trafford in 1992 when Eagles won the Divisional Premiership. Originally a hooker he is now a phenomenally hard tackler at prop or second row, and for four years in succession he was named Players Player of the Year by his colleagues.

ALEX THOMPSON

Age 20 Height 6.4 Weight 16.07
Signed from Crown Mallet ARLFC in Hull in 1992 and played with the Academy side. A very promising prop forward he was selected to play for the Great Britain U21 team against New Zealand last season. He has played 15 first team games for Eagles scoring one try to date.

BRIGHT SODJE

Age 26 Height 5.11 Weight 13.0
Nigerian born winger went to the same London school as Martin Offiah. After a successful Rugby Union career with Blackheath and London Division he changed codes four years ago and joined Hull KR. He scored 23 tries in the 1992-93 season for the Robins and was transfer listed at £120,000 but was swapped instead for David Plange in the close season.



Daryl Powell

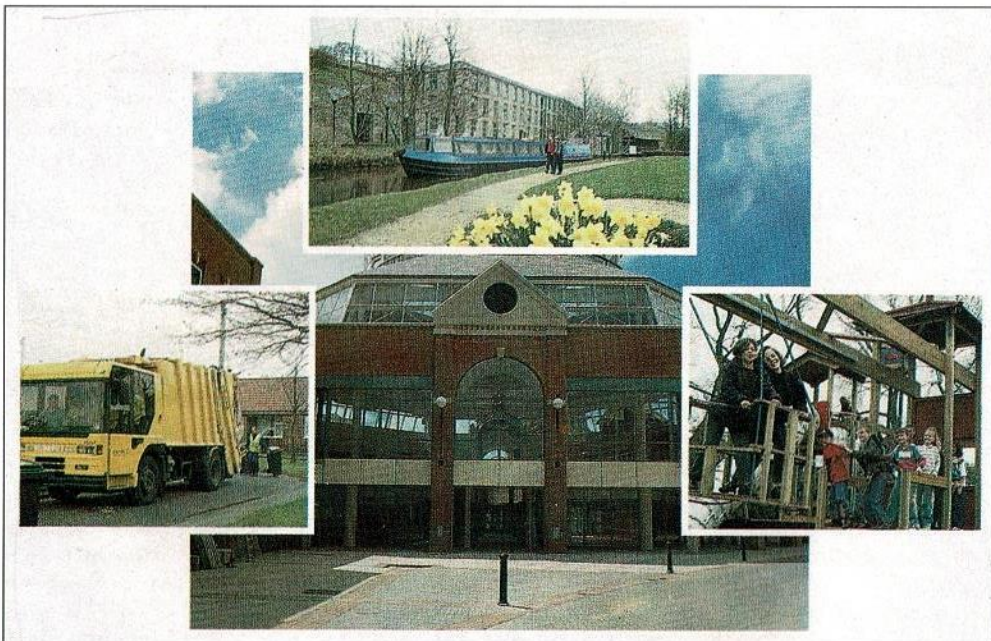
WATCH THIS SPACE FOR THE NEW CLUBCALL NUMBER

Tackling the issues...



on all fronts!

Employment and economic development, education, the environment, housing, recreation and culture, social services, roads and transport plus a good deal more!



Enquiries about Council services and policies to the Chief Executive's Department
Telephone: 061-911-4708

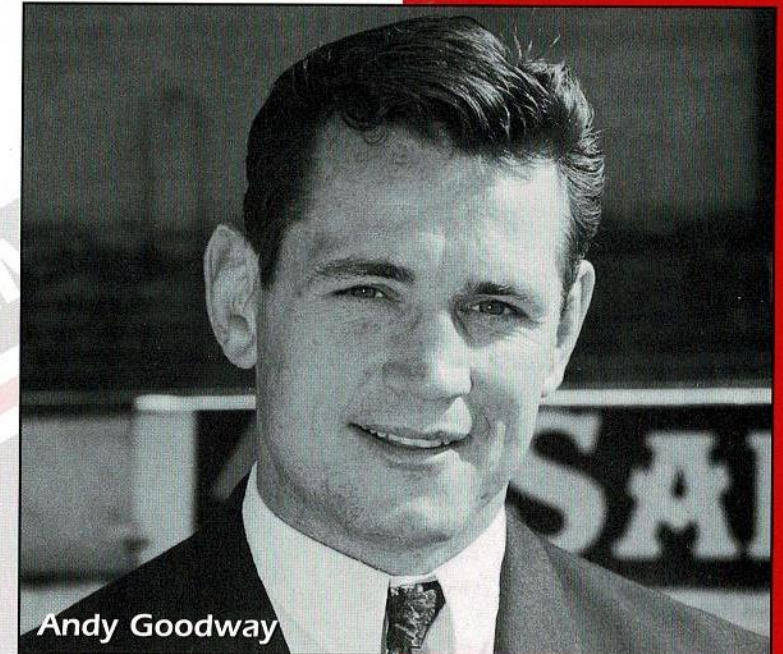
GOODWAY & McCURRIE

Welcome to today's visitors from Sheffield in what should be a very keenly contested game. We have a vital month ahead with 3 four-pointers coming up. Today's visitors being followed by a trip to Doncaster then Hull at Watersheddings. Six points from these games would both consolidate our top 8 position and keep our respective opponents down in the dog fight against relegation. After a pleasing effort but disappointing result against Leeds we cannot afford any slip-ups. If we can secure victories against these clubs the pressure of possible relegation would be gone and we could set our sights on a big tilt at the Challenge Cup. All the players and staff feel a good draw could see us go well in the competition.

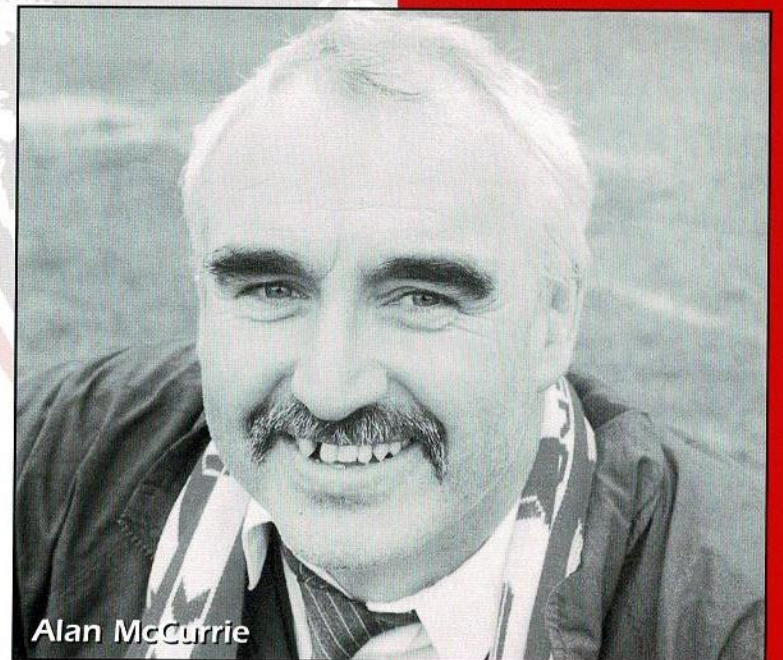
So if you're enjoying what you see, spread the word as we are still disappointed with the attendances. If you want a good team in Oldham give us the support and we're sure we could provide it.

Yours in Anticipation

Andy Goodway



Andy Goodway



Alan McCurrie

WATCH THIS SPACE FOR THE NEW CLUBCALL NUMBER.

ROUGHYED MERCHANDISE

**NEW IN STOCK
BASEBALL
CAPS
£7.50**

**Come to the shop for a look
You won't be disappointed...
Limited Number of Baby Coats**

REPLICA SHIRTS	Adults	34.99	Drill Zipped Bomber Jackets (age 2-5)	18.99
	Childrens	29.99	Cord Hooded Jackets (age 1-3)	18.99
	up to 32		Black Cord Toggle Jacket (age 4-6)	24.99
TRACKSUITS	Adults	54.99	Lined Bomber Jacket	49.99
	Childrens	49.99	Roll Neck Sweater	20.00
	up to 32		White Dress Shirts	15.00
Roughyed T-Shirts	Boys	12.00	Oldham Rugby Towels	5.00
	M. EXL	16.00	Key Rings	2.50
Roughyed Sweatshirts	Boys	19.50	Roughyeds Long Sleeve Sweatshirts	25.00
	M. EXL	25.00	Roughyeds Short Sleeve Sweatshirts	21.99
Mitre & Oldham	Rugby Balls	10.00	Polo Shirts	15.99
	Mini Balls	3.99	Shorts	12.99
Rugby Nuts		5.99	Shorts	14.99
Belts (Oldham rugby leather)		15.00	Framed Pictures of Watershedding	45.00 each
Car Sticker		2.00	originals limited edition	
Hats & Scarves		2.00 each	Framed Picture of Rugby League Legends	25.00 each
Umbrella		5.50		
Pennants		5.00		

WAITING TO ARRIVE
NEW CAR STICKERS ■ BRONX HATS ■ CLUB TIES

SHOP OPENING HOURS:-
Mon to Fri: 9.30am to 4.00pm
Saturday: 10.00am to 2.00pm
Matchday: 1.00pm to 3.00pm
4.30pm to 5.00pm

ROUGHYED TELEPHONE ORDERS

THIS SERVICE IS AVAILABLE

061 624 4865



Mark Cheetham of Tanfield (Oldham) Limited hands the keys of the sponsored car to John Watkins. Jason Temu and Joe Faimalo look on.

Tanfield (Oldham) Limited
125 Chamber Road
Oldham
Lancashire
OL8 1AA
Tel: 061-633 4872
061-627 0435
Fax: 061-627 0448



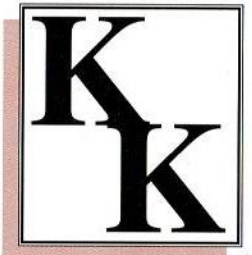
Tanfield (Oldham) Limited
and
Oldham Rugby League Club
working together

BUSINESS TALK

with Ray Hill

I would like to start by clearing up the confusion about the "Parrot". "Sid The Parrot" is one of the acts we have booked for our cabaret dinner on March 24th at Birch Hall. Joining the "Parrot" we have the one and only "Marvo The Magician" the finest magician on the circuit today? Alongside these two fantastic artists is the very very funny "Ramblin Stan", an old man with some hilarious stories. We have got a great night organised with a fabulous 4 course dinner, and great music played so you can dance away into the small hours. Don't delay, order your tickets as soon as possible, at only £20 per ticket they will soon go, so ring 624 4865 and order yours today.

CASH BONANZA
Are you interested in helping the club? If so please speak to John or Ray. We need help to collect money in all areas of Oldham and Failsworth. A very important part of making our club successful both on and off the field is fund raising, and our cash bonanza is our main form of income. We need your help to collect money on a regular basis, we actually pay good commission and in some cases we give you FREE tickets for the game. Remember the more money we bring in the more we have to spend on the team. The better the team the more trophy's we win. DO US A FAVOUR. RING JOHN OR RAY FOR MORE DETAILS



KEVIN KERSHAW ASSOCIATES

Commercial,
Criminal & Private
Investigations

Suite 3, Good Hope House, Bentinck St Ashton-Under-Lyne, Lancashire OL6 7SL

Telephone:
061-343 6510
Mobile:
0374 455905
Fax
061-339-0046



"A" Team supporters Xmas footings (What a lovely bunch of girls)

WATCH THIS SPACE FOR THE NEW CLUBCALL NUMBER



McCarthy's Catering

CELEBRATING A WEDDING, ANNIVERSARY, 18TH, 21ST OR EVEN A SPORTSMEN DINNER, WE CAN OFFER AN EXTENSIVE SELECTION OF HOT AND COLD FOOD

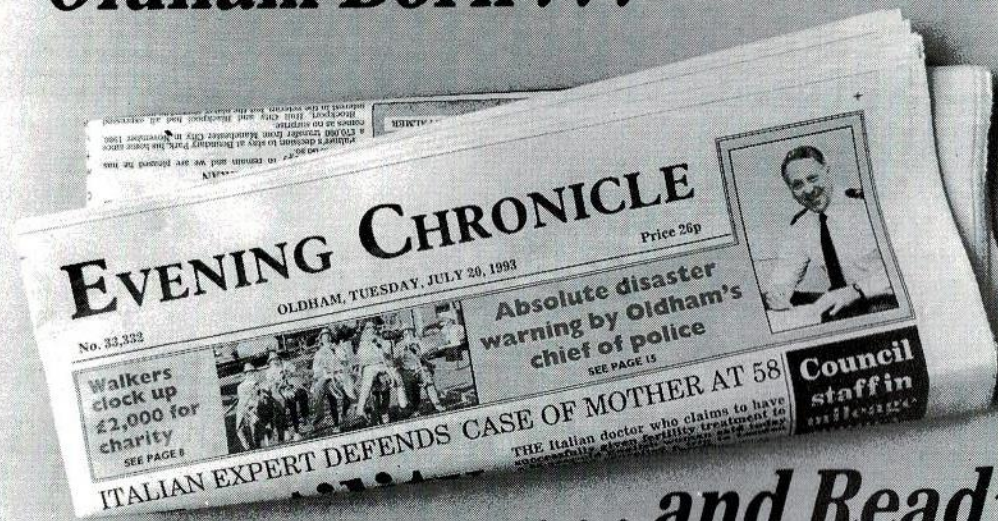


COMMERCIAL ENQUIRIES VERY WELCOME

0457 832607

VALE MILL LODGE, HUDDERSFIELD ROAD, MICKLEHURST, MOSSLEY

'Oldham Born ...



... and Read'

"WHEN YOU AIM FOR PERFECTION YOU DISCOVER IT IS A MOVING TARGET."
- Joseph Crossman

GRASS ROOTS ROUGHYEDS

A LOOK AT THE LOCAL AMATEUR RUGBY SCENE

Next Saturday 28th January four local clubs will be involved in the third round of the BNFL National Cup competition which features 187 teams and is the largest rugby league competition in the World. Already one of our local clubs has been eliminated. Tameside Borough won 48-0 at Cambridge in the first round but were then pipped by a late dropped goal in a 23-22 thriller at Wigan Tech.

Shaw had a good 24-10 home win against Rylands Recs in the second round but now face a difficult trip to New Earswick All Blacks, the new Conference Second Division club. Waterhead have an early opportunity to avenge their fourth round knock out of last season when Woolston Rovers visit Waterhead Park. The 44-2 scoreline from last February should be reduced somewhat but Rovers will once again begin as favourites. St. Annes have been drawn

away to Milford of Leeds. Last season when Saints met Milford in the Conference Second Division, the match at Higginshaw Road ended in a thrilling 26-26 draw but later in the season Saints won at Milford 22-4. It looks good for Saints but it will still be difficult tie.

On paper at least, Saddleworth Rangers look to have the easiest task of our local clubs when they entertain Northampton Knights. So far this season, Northampton have failed to win a match and have conceded over 650 points in 13 outings, that's over 50 points a match. Let's hope the Saddleworth scoreboard operator has a good nights sleep on Friday. Once these cup ties are out of the way, both Saddleworth and St. Annes face important league matches, Rangers have shown indifferent league form of late and have now slipped down into the relegation zone.

On Saturday, 4th February Wigan St. Pats visit Shaw Hall Bank Road for what is now a vital relegation match. Last season St. Pats won 20-13 at Saddleworth so it looks like an important few weeks ahead for Rangers.

The following day, 5th February, Saints visit Nottingham City. They should enhance their promotion hopes at the Harvey Haddon Stadium after beating the Midlands side 96-3 at home last October. Tomorrow is one of the biggest nights on the local rugby league social calendar when Saddleworth Rangers stage their annual Burns Night. The event is being held at the Broadfield Hotel, Rochdale and tickets are priced £17.50. The event is usually a sell out so contact any Rangers official to see if any tickets are available. If not, reserve one for next year!!

Don Yates

BEE FAMILY FINANCE

IF YOU REQUIRE CREDIT FOR

- Household Goods
- Carpets
- Furniture
- TV's
- Car repairs etc

We can also arrange credit facilities for leading fashion shops in Oldham and Manchester

A family business that looks after your family's needs
JUST CALL IN AT THE BEE FOR FRIENDLY ADVICE
Telephone: 624 9908

WATCH THIS SPACE FOR THE NEW CLUBCALL NUMBER



Designers and Printers of the Oldham RLFC Matchday Magazine
 11 Waterside Court, St. Helens Technology Campus, St. Helens, WA9 1UA
 Tel: (0744) 723868 Fax: (0744) 754416/753029

TODAY'S BIG MATCH SPONSORS

BIG MATCH SPONSOR



Hire Centres

A division of Speedy Plant Hire Ltd.

283 Featherstall Road North
 Oldham OL1 2NH
 Tel: 061 626 8111

*"Welcome to John Insley
 and his Guests"*

MATCH SPONSOR



Manufacture, Installation and Servicing:
 Security Gates, Barriers, Road Blockers and Turnstiles
 Regd. Office: Shaw Road, Oldham OL1 4AW
 Tel: 0(1)61 627 0060 Fax: 0(1)61 627 1362

"Thanks to Eric Broughton - Have a great day"

MAN OF THE MATCH SPONSOR

BABYLAND

WRIGLEY'S BABYLAND LTD
 54/65 GEORGE STREET OLDHAM, LANCs. TEL: 061 624 1160
"A warm welcome to Vincent Wrigley - Enjoy the match"

MITRE MATCHBALL SPONSOR

S. J. NORBURY
 SECURITY & ELECTRICAL

15 Brockway, Rochdale, Lancs. OL16 4QT Tel: 01706 38185
"Thank you for your continued support - Have a nice day"

PAUL ABBOTT LIMITED SPRINGHEAD GARAGE

*Quality Used
 Cars and First
 Class Servicing*

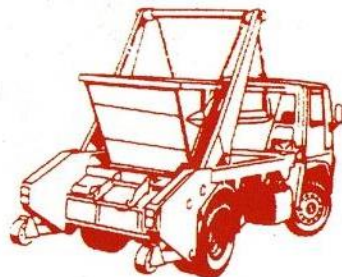


TEL: 0161 624 2725 • FAX: 0161 624 5128

WATCH THIS SPACE FOR THE NEW CLUBCALL NUMBER

HOLROYD Skip Hire Ltd.

DIGGER & TRACKED
MACHINE HIRE

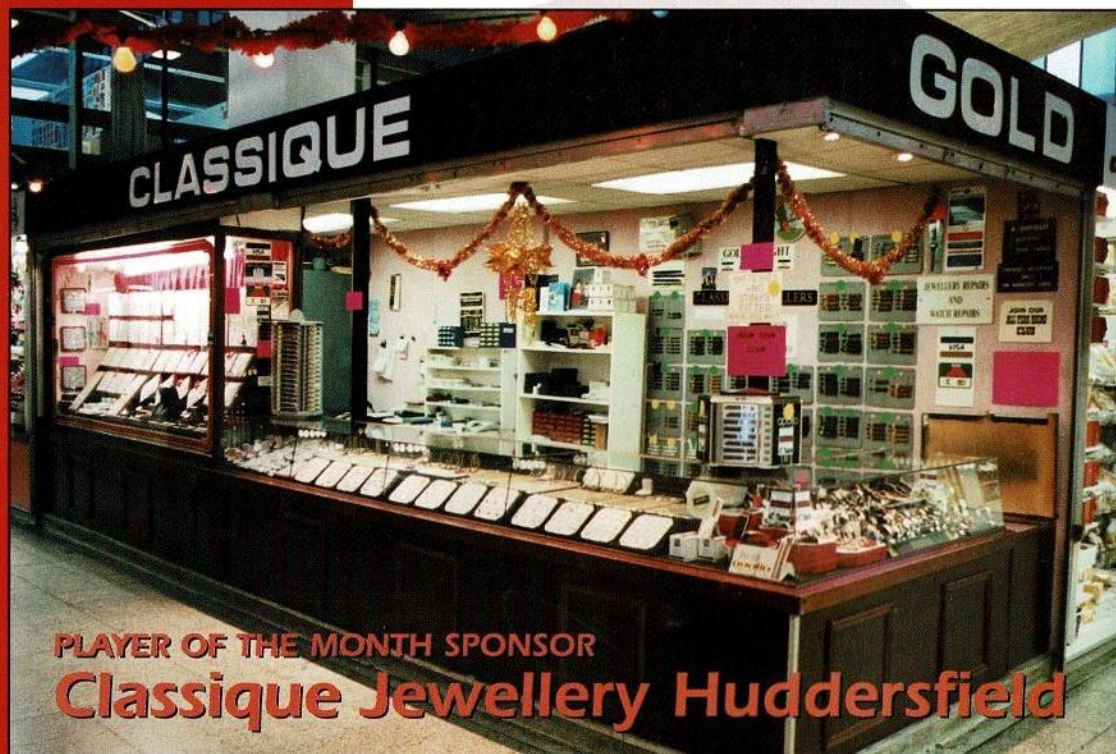


**YOUR FIRST CHOICE IN
WASTE REMOVAL**

TELEPHONE:
061-642 1118 OR 061-624 1311

EVENINGS FAX:
061-624 1171

LITTLE END FARM, MOORSIDE, OLDHAM.



PLAYER OF THE MONTH SPONSOR

Classique Jewellery Huddersfield

"THE SURE WAY TO BE LATE IS TO HAVE PLENTY OF TIME"
- Mark Twain.

CASH ^{BIG LEAGUE} BONANZA

JOIN NOW £1500 won every week
YOUR CHANCE TO WIN £1000 A WEEK ▪ £100 A DAY MONDAY TO FRIDAY
FOR ONLY £1 PER WEEK ▪ NOW AN EXTRA £100 IN PRIZE MONEY PER WEEK

Payable by Banker's Order or collected at your place of work, local pub
or newsagent. Why not become an agent yourself and earn generous commission?

WEEK No. 2 - Week Ending January 15th 1995

£1000 Winner: A0607 Agent:	J. & J. Smith D. Murgatroyd	EXTRA £10 BONUS PRIZE Winner: C3670	P. Fielding
Monday £100 Winner: B4870 Agent:	W. Harrison S. Derbyshire	Winner: D1335	F. Pullen
Tuesday £100 Winner: E8118 Agent:	C. Stott C. Stott	Winner: G0905	S. Mutley
Wednesday £100 Winner: C4656 Agent:	S. Elethriou A. Townsend	Winner: B5275	Grotton News
Thursday £100 Winner: F9942 Agent:	A. Ivell J. Bradbury	Winner: G5984	L. Muir
Friday £100 Winner: D4765 Agent:	D. James G. Hussey	Winner: H0551	J. Barnes
		Winner: B2658	J. Smith
		Winner: F8278	C. Patel
		Winner: E8600	M. Littlewood
		Winner: H7683	P. Widdall

£50 Agents Prize Draw: 1019 - P. Whelan

CASH BONANZA HOTLINE 061 620 4870

GARFORTH GLASS & MIRROR CENTRE

Established 1945

GLASS DEPT

- ✦ Glass cut to size
- ✦ Toughened Glass
- ✦ Laminated Glass
- ✦ Double Glazing
- ✦ Glass Table Tops
- ✦ Glass Cabinet Doors
- ✦ Glass Shelves
- ✦ Holes Cut & Drilled
- ✦ Decorative Glass Engraving
- ✦ Putty, Beading Silicone
- ✦ Decorative Leading
- ✦ Delivery Service
- ✦ Rigid Plastic Sheet

MIRROR CENTRE

- ✦ Large Showrooms on two floors
- ✦ Extensive range of framed & frameless mirrors
- ✦ Mirrors made to size
- ✦ Bevelled edge mirrors
- ✦ Brilliant cut mirrors
- ✦ Engraved design mirrors (e.g. Birds, Flowers, Fish etc)
- ✦ Security Mirrors

PICTURE FRAMING

- ✦ Bespoke picture framing
- ✦ Tapestries, embroideries, oils, stretched & framed
- ✦ Mounts cut to size
- ✦ Drymounting & heat sealing
- ✦ Readymade frames including ovals & swept
- ✦ Photoframes
- ✦ Clip frames stocked & made to size
- ✦ Chop & assembly service for D.I.Y.
- ✦ 'Special Offer' mouldings always in stock

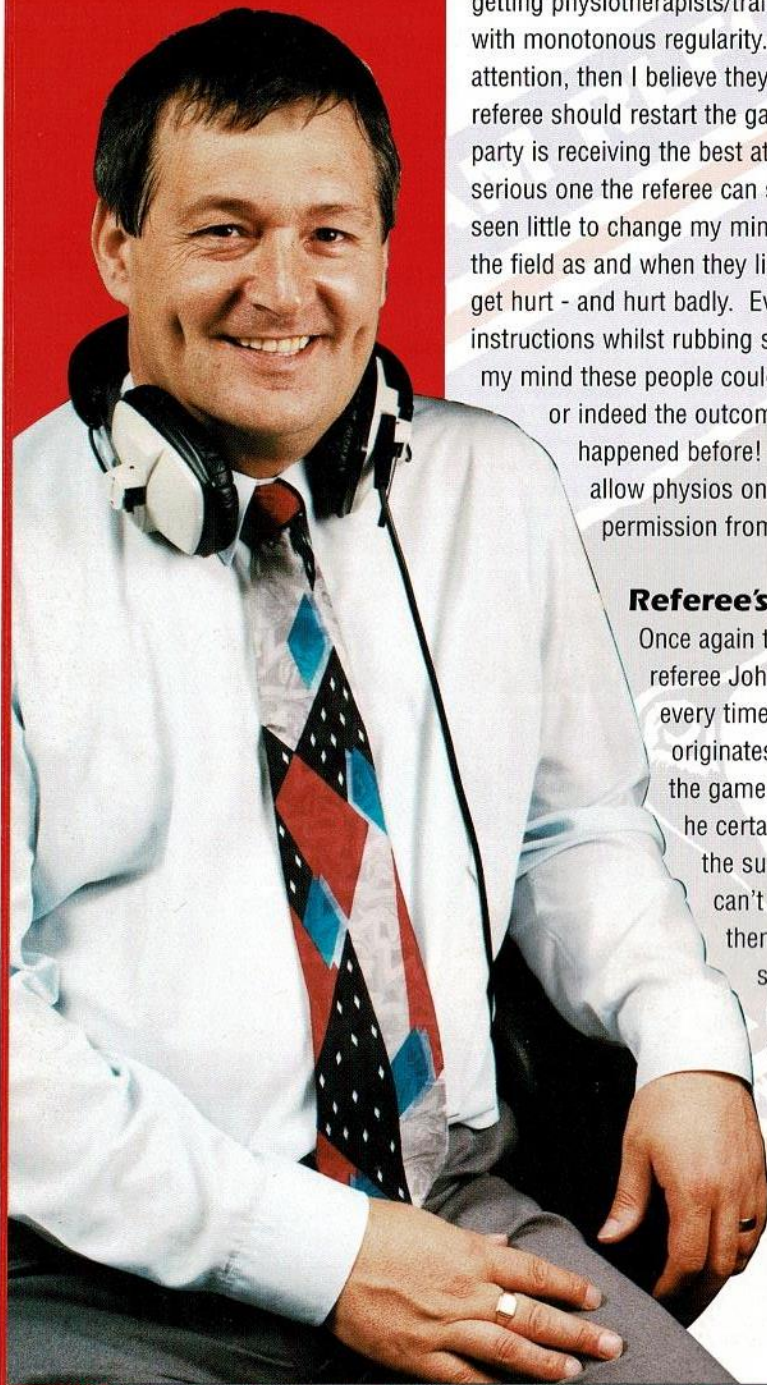
Personal, Friendly service from a family firm!

49-55 CO-OPERATIVE STREET, SPRINGHEAD, NR. LEES, OLDHAM

TEL: 061-624 7495 FAX: 061-627 5347

MALCOLM LORD

THE FACE BEHIND THE VOICE OF BBC GMR'S RUGBY LEAGUE



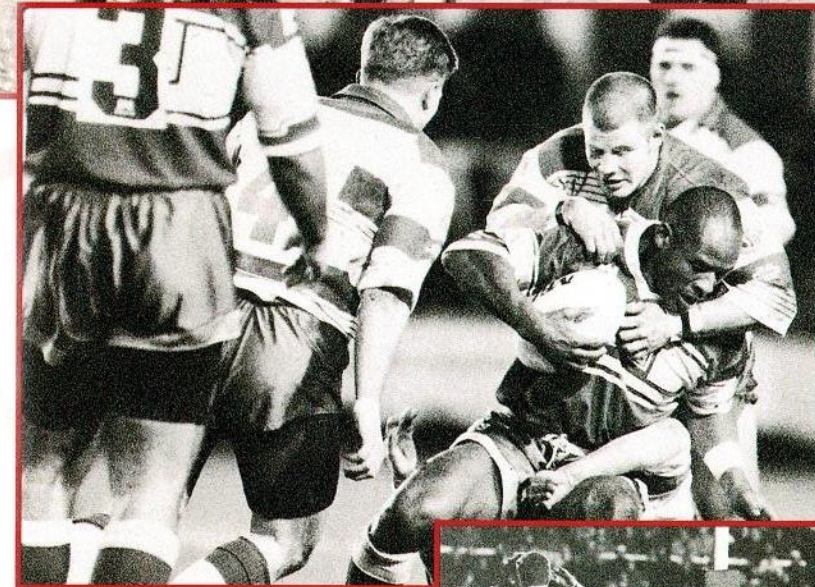
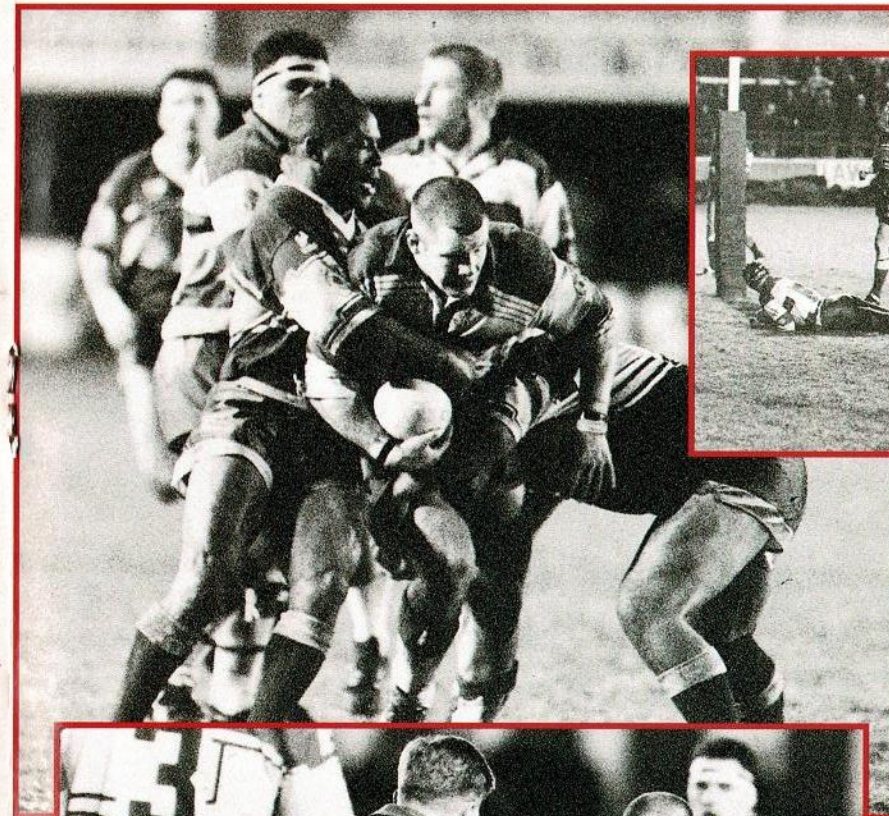
Soapbox Time?

Has anyone else noticed or is it just me? that we still appear to be getting physiotherapists/trainers etc. running onto the field of play with monotonous regularity. Now if a player's hurt and in need of attention, then I believe they should be allowed on immediately. The referee should restart the game sure in the knowledge that the injured party is receiving the best attention, and obviously if the injury is a serious one the referee can stop the game. I've said it before and I've seen little to change my mind, that if these people continue to take to the field as and when they like, one of these days someone is going to get hurt - and hurt badly. Everyone knows that they're delivering instructions whilst rubbing someone's face with a wet sponge and to my mind these people could well interfere with play and be the cause or indeed the outcome of a very serious accident - it's happened before! So let's tighten up the rules and only allow physios on for bone-fide injuries and only then with permission from the referee.

Referee's Hard done by?

Once again the Regal Trophy draw hasn't done Wigan referee John Connolly any real favours. You see every time Wigan reach a final, because John originates from the town, he is ineligible to cover the game. It's not just John who's missed out but he certainly is hit as badly as anyone because of the success of the town. I believe that if we can't trust referees to cover their own towns, then they shouldn't be refereeing and by the same score if a person has earned the right to referee a game on merit, his place of birth should not have any relevance. Hopefully the best sides always get to the finals and rightly so - so we must ensure that they are policed by the best. This may not always be so under the current rules.

The rules need changing!



Top left: John Clarke trying to break through.

Top right: Paul Topping scoring his try against Leeds.

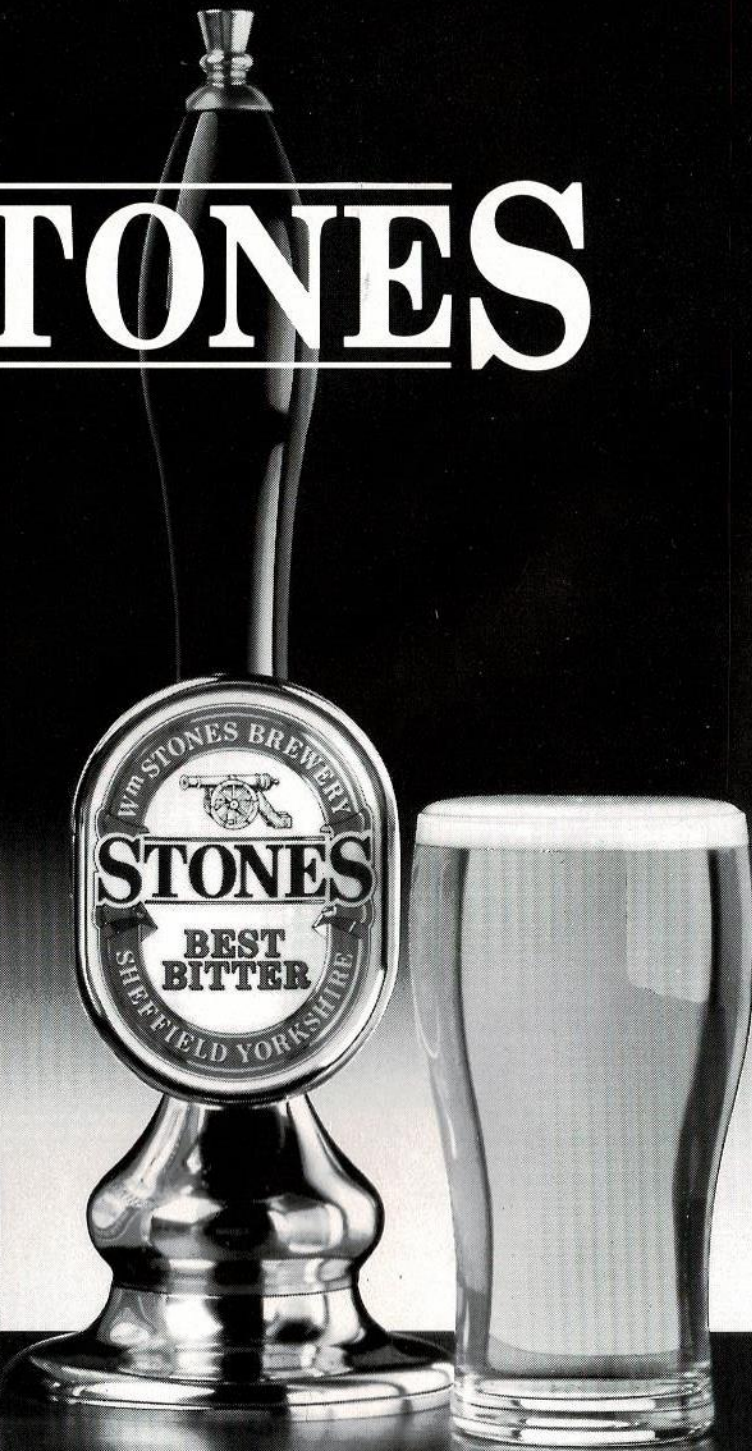
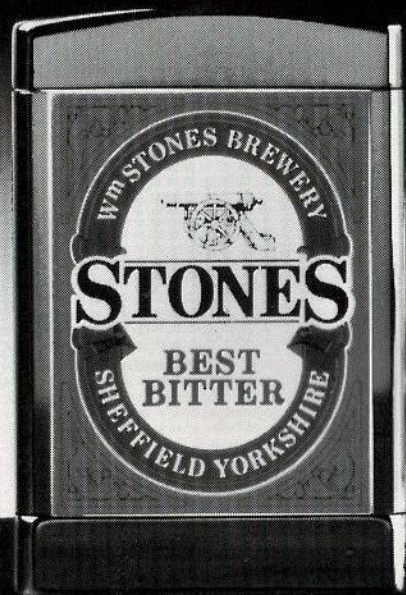
Middle: John Clarke getting to grips with Ellery Hanley

Bottom: Paul Topping closing Alan Tait down behind his line.



ACTION REPLAY

STONES



THE MAJOR SPONSOR OF RUGBY LEAGUE.

Sponsorship & Hospitality Packages 1994/95



During the year we hold many fundraising and promotional events for companies.

Why not sponsor the whole event? This includes all publicity material carrying your company message or logo, photograph in the local press and matchday programme. Also the opportunity to discuss your product or service with a 'captive' audience.

This Years Events Include:-

GOLF TOURNAMENT

A day out for guests or colleagues at a local golfing venue. Enjoy the chance of winning a new car for a hole-in-one at a designated hole. This together with a meal after your round and a prize giving ceremony with a comedian or speaker makes the whole day one to remember.

SPORTSMANS EVENINGS

After the success of our last two dinners tickets are in great demand. Again supported by local media and businesses gives you and your company the opportunity of entertaining guests for a full evening of quality. Quality food, quality wine, quality speakers.

LUNCHEON CLUB

This year for those who feel unable to attend the Sportsmans Dinners in the evenings, they will have the opportunity to 'socialise' with clients or colleagues over a lunch which also has a celebrity speaker. The ideal way to mix business and pleasure, combining the highest quality cuisine, celebrity speaker and an afternoons entertainment.

PROMOTE YOUR COMPANY

This is a unique concept to Rugby League and one we feel will be very successful. The idea comes from America and it is quite simple.

At each home game a company 'Gives' away merchandise (agreed between ourselves) this could be:

Umbrellas • Baseball Caps • Pens • Radios (Quantities to be agreed)

The list is endless

Each gift will have the name of your company on and also something connecting it with Oldham R.L.F.C.

These items and games are advertised in advance and this will encourage children, adults and families to attend in the hope of getting a 'gift'.

The choice of gifts are endless these can range from pin badges or T-shirts to shaving kits or umbrellas.

TICKETS

During the season we accept that every game is not going to be a 'sell out'. So we have decided to sell these tickets to companies at greatly reduced prices. The tickets are only for standing areas and cannot be exchanged for seats.

The regular ticket prices are – Adult £6.00 – Child/OAP £3.00

These tickets can be used as prizes, or simply public relation exercises.

The tickets will be available for the following games:

Doncaster • Workington T. • Wakefield T. • Sheffield E. • Hull

The tickets are available in 100's



**Martin Crompton
Receives the Law Cup**

1994/95 HOSPITALITY PRICE LIST

Type of Package	Match	Executive	Man of the Match	Match ball		
Number of Guests	20*1	10*2	4*3	4*3		
Date	Versus	K. Off				
21/8	Halifax	3.00pm	£1,400	£750	£275	£275
4/9	Wigan	3.00pm	£2,000	£1,000	£350	£350
18/9	Doncaster	3.00pm	£1,100	£650	£275	£275
2/10	St. Helens	3.00pm	£1,500	£800	£300	£300
14/10	Widnes	7.30pm	£1,400	£750	£275	£275
30/10	Featherstone	3.00pm	£1,250	£700	£275	£275
22/11	Bradford	7.30pm	£1,500	£800	£300	£300
11/12	Warrington	3.00pm	£1,400	£750	£300	£300
1995						
1/1	Workington	3.00pm	£1,100	£650	£275	£275
8/1	Leeds	3.00pm	£1,400	£750	£275	£275
22/1	Sheffield E	3.00pm	£1,250	£700	£275	£275
5/2	Hull	3.00pm	£1,250	£700	£275	£275
5/3	Wakefield T	3.00pm	£1,250	£700	£275	£275
26/3	Castleford	3.00pm	£1,500	£800	£300	£300
14/4	Salford	7.30pm	£1,250	£700	£275	£275

Prices Exclude VAT

Cost per head for extra guests – *1 £60 – *2 £60 – *3 £50

"THE WILL TO WIN IS NOT NEARLY AS IMPORTANT AS THE WILL TO PREPARE TO WIN"
- Bobby Knight

THE GROWING GAME

Development News Supported by P.Casey and Co and Sportsmatch

RUGBY RECALL QUIZ

1. In the early 1980's which former Lance Todd Trophy winner threatened to quit the game, if Hull KR put a fee on his move to Oldham?
2. What did Huddersfield's ground become known as from season 1984-85?
3. Give the nicknames of the following teams: Leeds, Hull FC, and Featherstone Rovers?
4. Which ex-Widnes player scored 74 points for Oldham in 13 matches at the end of season 1987-88?
5. Which club payed Oldham £2,000 in August 1987 for the registration of veteran prop Mick Morgan?
6. At which soccer ground was the 1987/88 John Player Trophy final held at?
7. From which club did Oldham sign Hugh Waddell in January 1988?
8. Who were the two points scorers for Oldham in Wigan's last Challenge Cup defeat (score 10-8)?
9. Which current second division club used to play home matches at Wiggington Road?
10. Which current second division side were beaten 112-0 by St. Helens in the Lancashire Cup on 14/9/86?

Answers on Page 28
THE WELSH CONNECTION (TM)
Copyright. Kevin Jones 1995

Today is a very special day for the Rugby League Development Scheme. We have two large groups of people with us today as guests. First we have young players from every Junior Rugby League Club in the town. Players and coaches are here from Higginshaw, Royton Tigers, Salem, Saddleworth, Shaw, St. Annes and Waterhead. These people are the long term future of both Amateur and Professional Rugby League and I am delighted that the club has decided to invite them today. Every young person will also receive an application form to join the Junior Roughyeds and become a regular supporter if they are not already. In recent weeks Oldham games have received sponsorship from Waterhead ARLFC and from St. Annes ARLFC. Today the club

have invited every junior player in the town to come to the game. All signs that Rugby League is coming closer together in Oldham. The second group of visitors are from the local schools. Before today's game we have held the draw for the Oldham Schools Cup sponsored by Quantum Sports and Leisure. In the Leeds programme I was able to announce that the total number of entries received was 85. I can now revise that figure to tell you that the draw today has included 88 different teams from under 11s to under 19s. They will now play off until May when the finalists will play off here at Watersheddings. At half time today there is a Relay Race between 2 players from each Under 9's section in the Junior Clubs. Please give them your fullest support.



SUMMER RUGBY - Some players take a break at a mini-league festival

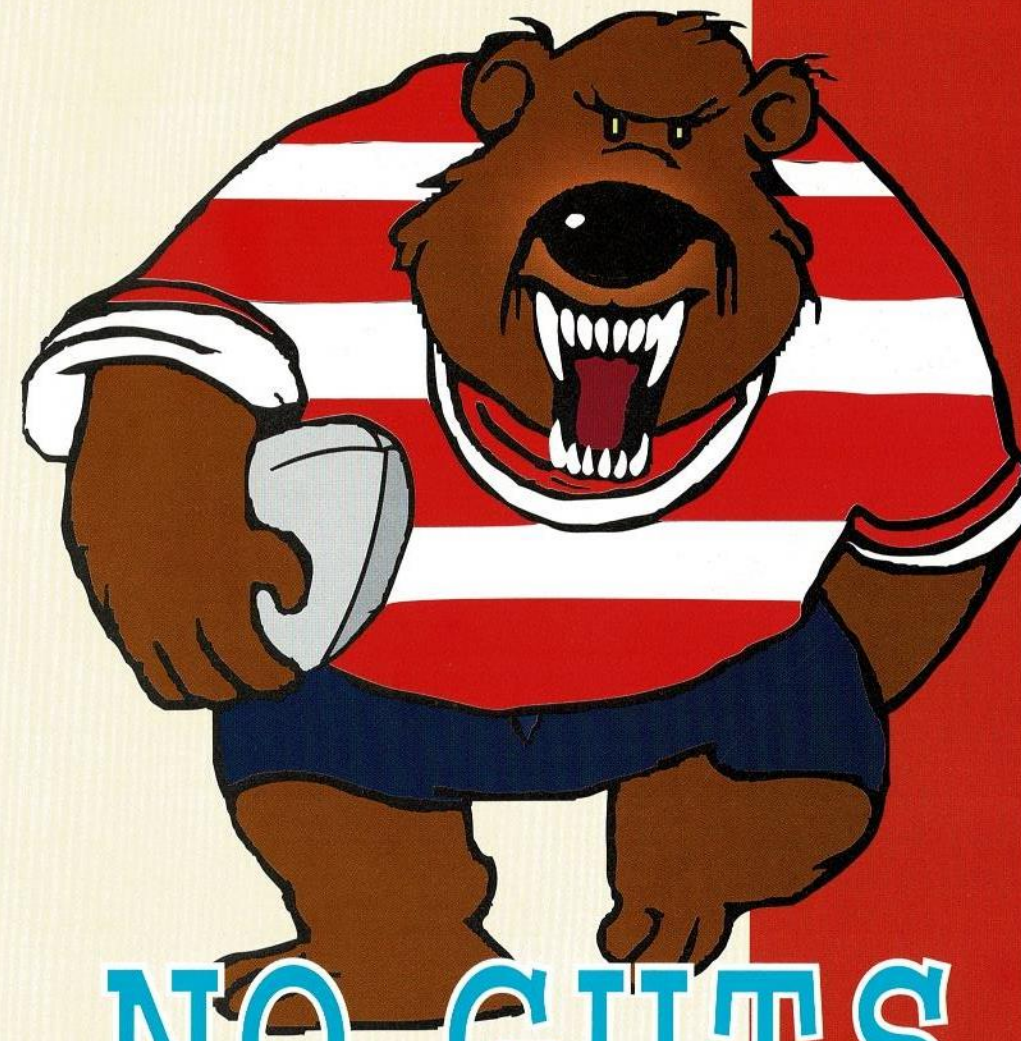


The Casey Group
of Companies
PO Box 54, Rydings Road
Wardle, Rochdale
Lancashire OL12 9PS
Tel:(0706) 341121
Fax:(0706) 861156



BUSINESS BACKING SPORT

WATCH THIS SPACE FOR THE NEW CLUBCALL NUMBER

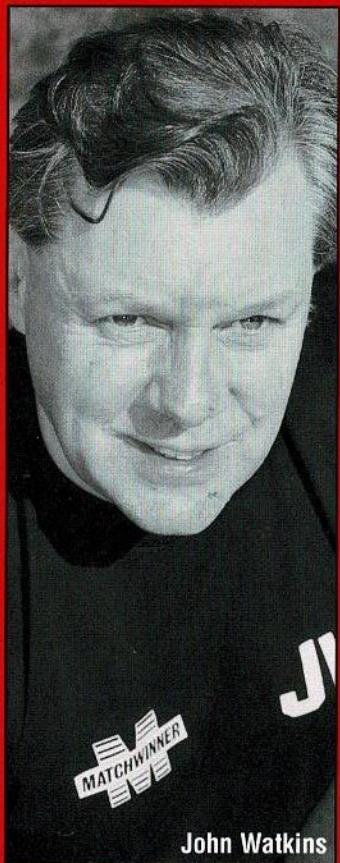


NO GUTS NO GLORY

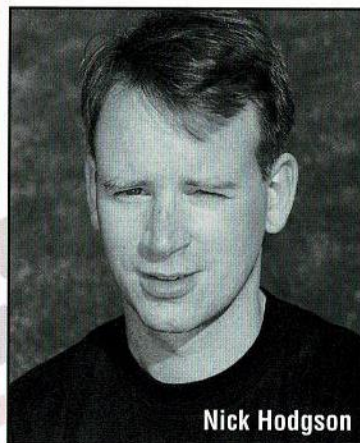
"IT IS ONLY EIGHTEEN INCHES BETWEEN A PAT ON THE BACK AND A KICK IN THE PANTS." - Joseph Crossman

INJURY UPDATE

FROM THE TREATMENT ROOM



John Watkins



Nick Hodgson

Many people were wondering where Alfie Goulbourne had got to since the Wigan Alliance Shield Final. Alfie strained ankle ligaments in that game, and with him living in Hull, decided to have treatment on Humberside rather than do a 200 mile round trip for treatment at the club. However

most of our players travel through to the club or go down to Nick's practice in Ashton-under-Lyne during the day for treatment, so Alfie's case was the exception rather than the rule. Alfie is now back in action having played against Castleford 'A' team a week last Friday, taking Nigel Heslop's place on the wing as Nigel strained a hamstring in the A teams brilliant 1st round Alliance Challenge Cup victory at Wigan a fortnight ago. Also injured in the Wigan game were Martin Holden (thumb) and David Stephenson, sprained ankle. Happily, David recovered in time for the Castleford match, but Martin like Nigel was still under treatment.

TRAVELLING AWAY WITH THE ROUGHYEDS

DUE TO CASTLEFORD'S INVOLVEMENT IN THE REGAL TROPHY SEMI FINALS OUR TRIP TO WHELDON ROAD HAS HAD TO BE RE-ARRANGED AND WILL NOW TAKE PLACE ON WEDNESDAY 1st FEBRUARY WITH A 7.30pm KICK OFF

Directions for Wheldon Road are as follows: Join M62 Junction 31 (A655) Follow signs Castleford A655 • (Edge of) Castleford at roundabout take 2nd exit in 1.2 miles at roundabout take 2nd exit in 0.2 mile at roundabout take 2nd exit into Wheldon Road unclassified for Castleford RL Ground (on right)

WATCH THIS SPACE FOR THE NEW CLUBCALL NUMBER

No 34000

THE GREAT RUGBY LEAGUE GOLDEN GAMBLE

WIN UP TO £2000

50% of proceeds up to a maximum of £2000 paid to the winner

50% of proceeds go directly to help your club

GUARANTEED WINNER EVERY GAME

Ticket £1.00

BUY YOUR GOLDEN GAMBLE TICKET NOW!!!

It could be a WINNER

RUGBY

League

WEEKEND

LEAGUE Express

DELTA CARS

HILL STORES

156 HUDDERSFIELD ROAD
OLDHAM

061 627 2277

"A GREAT ACTOR CAN BRING TEARS TO YOUR EYES, BUT THEN SO CAN A MECHANIC"
- Donald Reber

DUNCANS OF OLDHAM

OLDHAMS ONLY MAIN DEALER

FOR

VOLVO

061-624 2404



061-628 6200

HYUNDAI

061-624 2404

**FIRST FOR SALES · SERVICE
& PARTS**

**ALWAYS A HUGE SELECTION OF TOP CLASS
NEW, USED & DEMONSTRATORS AVAILABLE**

ALL ON ONE SITE

ROCHDALE ROAD · OLDHAM · OL1 1NU · OPPOSITE CIVIC CENTRE

FROM SMALL 'A' CORNS GROW

A look at our Alliance team

On Friday last I was approached by two ladies who were very appreciative of the efforts of the lads in the Alliance Squad. They both remarked on the team-spirit shown in the (A) Team and the excellent standard of rugby on display. Your remarks have been passed onto the players ladies and they are very pleased you are happy with their performances. Certainly we had nothing to complain about. On Monday 9th January we travelled to Central Park to face a very strong Wigan outfit in the first round of the Challenge Cup. Despite a front row of Quinnell, Dermott and McDermott with Simon Haughton in the second-row, the Wigan pack were never allowed to get into the game. The Wigan press once again reported that the much older, more experienced Oldham side had triumphed, despite the fact that the average age of our pack was twenty-two. A Wigan Official was more honest when he remarked, "WE WERE LUCKY TO COME SECOND ...". For the record, tries were scored by Wilson March (2), Steve Gartland (2), Damian Ainge, whilst Craig Booth (3 goals), Wilson Marsh a goal and a drop goal by Steve Gartland completed the scoring. An excellent defence restricted Wigan to one try from a kick and chase, and the final score

was a very satisfactory eight points to thirty-one points.

Four days later we faced Castleford at home in a League fixture. Castleford boasted the best defensive record in the League and looked the better team in the opening exchanges. Our lads looked jaded after the Wigan match but gradually began to dominate a young Cas side and finally made a fearful dent in the defensive record by recording a fifty points to four points win. Nine tries were scored through Gary Burns (2), David Bradbury (2), Craig Booth, Steve Gartland, Howard Hill, David Jones and Alfie Goulborne, whilst Craig Booth kicked six goals and Damian Ainge, one. That win puts us three points clear at the top of the first division with a match-in-hand over our nearest rivals. The Alliance Championship is within our grasp and it is now up to us to keep on winning. The Players are delighted with the increasing support, your encouragement is very much appreciated and we'll do our best again when we meet Featherstone at home on Friday 20th January and Halifax away in the second round of the Challenge Cup the following Friday.

DENNIS McHUGH

	P	W	D	L	For	Agst	Diff	Pts
Oldham	15	12	0	3	458	296	162	24
St Helens	16	10	1	5	481	343	138	21
Warrington	15	9	0	6	441	295	146	18
Leeds	16	9	0	7	348	314	34	18
Wigan	14	8	0	6	459	285	174	16
Castleford	13	8	0	5	304	216	88	16
Bradford	15	8	0	7	400	326	74	16
Hull	17	8	0	9	339	442	-103	16
Salford	17	7	0	10	414	361	53	14
Wakefield	18	6	1	11	383	424	-41	13
Dewsbury	13	6	0	7	291	342	-51	12
Halifax	14	6	0	8	257	347	-90	12
Featherstone	17	6	0	11	332	519	-187	12
Rydale York	16	3	0	13	269	666	-397	6

ALLIANCE FIRST DIVISION

DATE	OPPONENT	VENUE	K.O.	RES
August				
19th	Halifax	A	7.30	W36-12
26th	Bradford N	H	7.30	W32-26
September				
1st	Blank weekend			
2nd	Wigan	A	7.30	W26-21
10th	Warrington	H	7.30	L10-32
16th	Dewsbury	H	7.30	W20-12
24th	St. Helens LCC Shield RD1		7.30	W46-22
30th	St.Helens	A	7.30	W42-38
October				
8th	Thatto Heath LCC Shield RD2			W61-12
14th	Ryedale Y	A	7.30	W46-29
27th	Widnes LCC Shield Semi			W30-10
28th	Featherstone R	A	7.30	L22-37
29th	YSC Cup & LCC Shield - Semi Finals			
November				
4th	Halifax	H	7.30	W25-10
10th	Dewsbury	A	7.30	
12th	Wigan LCC Shield Final			L10-24
18th	Wakefield T	H	7.30	W28-8
25th	Wigan	H	7.30	W36-6
30th	Leeds	A	7.30	L18-31
December				
9th	Warrington	A	7.30	post
16th	Salford	H	7.30	W44-14
24th	Blank weekend			
30th	Hull	A	8.00	W33-16
January				
9th	Wigan (All. C. C. R1)	A	7.30	W8-31
13th	Castleford (T.B.A)			W50-4
20th	Featherstone R	H	7.30	
28th	Alliance Challenge Cup - Second Round			
February				
1st	Bradford N	A	7.30	
10th	Salford	A	8.00	
17th	St.Helens	H	7.30	
18th	Alliance Challenge Cup - Third Round			
24th	Hull	H	8.00	
March				
2nd	Wakefield T	A	7.30	
10th	Leeds	H	7.30	
11th	Alliance Challenge Cup - Semi Finals			
17th	Ryedale Y	H	7.30	
23rd	Castleford	A	7.30	

NEIL GIBBISON

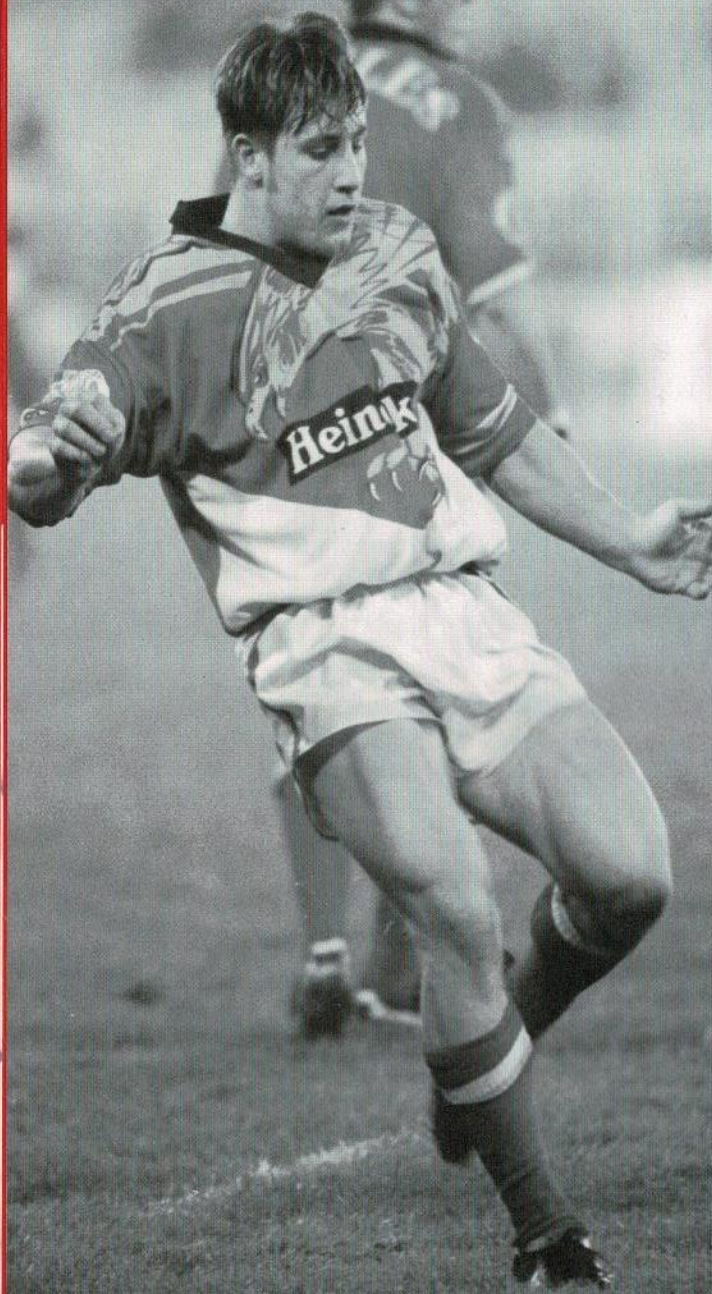
B.D.S., V.U. Manc.

Dental Surgeon

36 Oldham Road Uppermill Oldham OL3 6HV Telephone: 0457 872108

RUFF E. HEAD

THE MAN IN THE KNOW - IAN WILSON



LYNTON STOTT (Sheffield Eagles)
A MAN TO KEEP AN EYE ON - has pace
and ability, played 29 games last season

“ In the light of 2 fantastic 'A' team performances recently, at Wigan and against Castleford, I think we should all be putting pressure on the RL for a club championship award, for combined first and reserve grades. The Aussies do it; why not here too? ”

“ After some of the efforts of post-Eddie Waring BBC commentators and 'expert' summarisers, Terry Flanagan has been like a breath of fresh air in recent weeks. He has shown a sense of humour, and a real feel for the action. Is Uncle Ray retiring soon, perhaps? ”

“ A black mark to the RL for agreeing a 12.50 kick off for the televised Wigan v Castleford game. By the time the game was over, potential spectators had less than half-an-hour to get to a 3.00pm kick-off. And they are always moaning about how to get more paying spectators through the turnstiles. ”

“ I am definitely pro the Greg McAllum interpretation - changes we have seen so far. Next, apparently, we are to have refs, citing for dangerous play (February); and, during the close season, miracle of miracles, the scrummage is going to be centre of attention. But I am not keen on the public pillorying of referees, I must say. As we all know, refs make mistakes; they are human, after all. And some make more than others. I have no quarrel whatsoever with these being taken to task, educated to improve if possible, and downgraded if necessary. But I cannot see what is gained by public criticism by their supremo. It reeks of Keith Fletcher's comments in Australia; whilst pandering to the worst excesses of the media rabble-rousers, it achieves absolutely nothing in itself. Praise in public, criticise behind closed doors would be a maxim of good management which Mr McAllum might like to ponder upon. ”

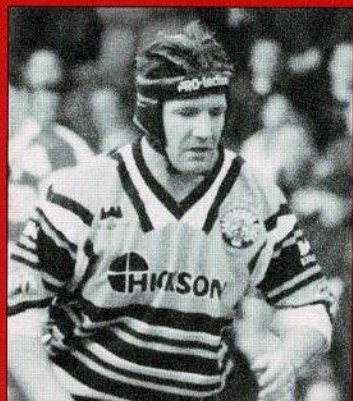
“ Full marks to Andy Goodway, I thought, on his in-depth interview in League Express Weekend on January 6th. He came over as a coach with genuine ideas, and with a real grasp both of the modern game and of team preparation. Incidentally, the feature on David Hobbs on the same centre page was a good illustration of the hazards of journalism; the paper went to press 10 minutes before the Wakefield Chairman announced Hobbs' departure! ”



TRY AGAIN!

VAUX SAMSON - ITS STRENGTH IS ITS TASTE

STATISTICALLY SPEAKING 1994-95



NEWS ON FORMER PLAYERS

Richard Russell is making the news lately for all the good reasons. The local lad signed from Wigan in 1989-90 has just been selected to play for England against Wales.

Richards first season for Oldham was a busy one he played 41 times from a possible 43 games. He started at stand off went to full back, played in the centre and had 14 games at hooker he finished the season off playing the last 4 games at loose forward.

The team at that time was being coached by Tony Barrow, and we finished third in Division 2 we were involved in 15 cup ties reached the final of the Lancashire Cup, the semi final of the Challenge Cup, and the Premiership final against Hull which we won 30-29.

Richard scored 8 tries that season and has since moved on to Castleford where he has established himself as a number nine culminating in his selection for England.

We wish Richard good luck for the future and hope he goes on to a full GB cap. (By the way the average home gate in the season 1989-90 was 4,668).

ANSWERS TO QUIZ ON PAGE 20

- Brian Lockwood
- Arena 84 (club became Huddersfield Barracudas)
- The Loiners, The Airlie Birds, The Colliers
- Mick Burke
- Castleford
- Burnden Park (Bolton Wanderers)
- Blackpool Borough
- Kirwan 1T, Burke 3G
- York
- Carlisle

DATE	OPPONENT	K.O	Res	1	2	3	4	5
AUGUST								
21st	Halifax	3.00	L 20-40	Gibson	Jones	Irwin	Abram T	Ranson
28th	Bradford Northern	3.00	L 14-36	Gibson T	Jones	Irwin	Abram	Ranson
SEPTEMBER								
4th	Wigan	3.00	L 58-10	Gibson T	Jones	Irwin T	Abram	Ranson T
SEPTEMBER								
11th	Warrington	3.00	L 55-6	Heslop	Jones	Irwin	Abram	Ranson
18th	Doncaster	3.00	W 44-8	Heslop T	Jones	Irwin T	Abram T	Ranson
25th	Hull	3.15	W 21-17	Heslop	Jones T	Irwin	Abram 2T	Ranson
OCTOBER								
2nd	St. Helens	3.00	D 18-18	Heslop	Jones T	Irwin	Abram	Ranson
9th	Wakefield Trinity	3.30	L 16-21	Heslop	Jones	Irwin	Abram	Ranson
14th	Widnes (BSKYB)	7.30	W 29-0	Gibson	Jones	Irwin T	Abram T	Ranson
30th	Featherstone Rovers	3.00	L 10-20	Gibson	Jones	Irwin	Abrams T	Ranson
NOVEMBER								
6th	Halifax	3.00	L 34-8	Gibson	Heslop	Irwin	Abram T	Ranson
22nd	Bradford Northern	7.30	W32-12	Gibson 2T	Jones	Irwin	Abram 2T	Ranson
27th	Wigan	3.00	L 46-0	Gibson	Jones	Irwin	Abram	Ranson
DECEMBER								
4th	Hull K.R. (RT Rd2)	3.00	W 28-0	Gibson	Jones T	Irwin T	Abram CT	Ranson C
11th	Warrington	3.00	W52-22	Gibson	Jones	Irwin	Abram T	Ranson
18th	Widnes (RT Rd3)	3.00	L 6-20	Gibson	Jones	Irwin T	Abram	Ranson
26th	Salford	3.00	W 16-12	Gibson	Belle (T)	Irwin	Abram	Ranson
JANUARY								
1st	Workington Town	3.00	W20-10	Gibson	Belle	Irwin	Abram	Ranson J
8th	Leeds	3.00	L14-21	Gibson	Belle	Irwin 1T	Abram	Ranson
15th	Castleford	3.30						
22nd	Sheffield Eagles	3.00						
29th	Doncaster	3.00						
FEBRUARY								
5th	Hull	3.00						
11th	Silk Cut Challenge Cup (Round 4)							
19th	St. Helens	3.00						
25th	Silk Cup Challenge Cup (Round 5)							
MARCH								
5th	Wakefield Trinity	3.00						
11th	Silk Cut Challenge Cup (Round 6)							
19th	Widnes	3.00						
26th	Castleford	3.00						
APRIL								
2nd	Leeds	3.30						
9th	Sheffield Eagles 3.15							
14th	Salford	3.00						
17th	Workington Town	3.00						
23rd	Featherstone Rovers	3.30						

HOME FIXTURES ARE DENOTED IN BOLD CAPITAL LETTERS

WATCH THIS SPACE FOR THE NEW CLUBCALL NUMBER

STONES BITTER CHAMPIONSHIP

DIVISION 1

	P	W	D	L	F	A	Pts
Leeds	18	15	1	2	530	339	31
Wigan	16	15	0	1	598	232	30
Bradford N.	19	13	1	5	512	336	27
St. Helens	18	12	1	5	464	352	25
Halifax	17	11	1	5	455	287	23
Castleford	15	10	2	3	430	260	22
Warrington	17	10	1	6	403	286	21
Oldham	17	7	1	9	330	430	15
Salford	17	6	1	10	370	392	13
Sheffield	18	6	0	12	341	457	12
Wakefield	17	6	0	11	253	446	12
Doncaster	17	5	1	11	288	473	11
Widnes	16	4	1	11	194	396	9
Workington	17	4	1	12	251	473	9
Featherstone	18	3	1	14	338	432	7
Hull	17	3	1	13	310	476	7



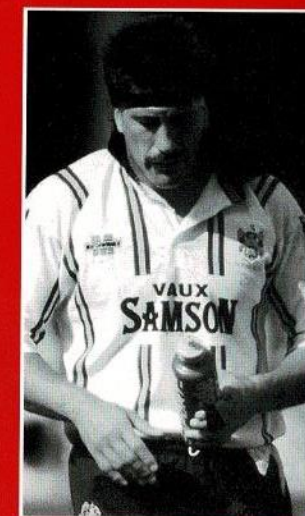
Gartland G6	Crompton	Sherratt	Clarke	Parr	Lord	Davidson	Kuiti	Richards T	Heslop
Gartland G1	Crompton	Sherratt	Clarke	Parr	Lord	Davidson	Kuiti	Richards T2	Heslop
Gartland G1	Crompton T	Sherratt	Clarke	Richards	Lord	Davidson	Kuiti	Parr	Topping
Gartland G1	Crompton T	Sherratt	Clarke	Parr	Lord	Davidson	Kuiti	Richards	Faimalo
Topping T 6g	Crompton 2T	Sherratt	Clarke	Parr	Lord T	Faimalo T	Kuiti	Richards	Gartland
Topping 4g	Crompton 1dg	Sherratt	Clarke	Faimalo	Lord	Green	Kuiti	Gartland	Davidson
Topping 5g	Crompton	Sherratt	Clarke	Parr	Lord T	Faimalo	Kuiti	Gibson	Temu
Topping 3g	Crompton T	Sherratt	Clarke	Temu	Lord	Faimalo	Kuiti 2T	Davidson	Gibson
Topping 4g	Crompton Tdg	Sherratt	Clarke	Parr	Lord T	Faimalo	Kuiti	Heslop	Temu
Topping 3g	Crompton	Sherratt	Clarke	Temu	Faimalo	Lord	Kuiti	Heslop	Parr
Topping	Crompton	Sherratt	Clarke	Temu T	Lord	Faimalo	Kuiti	Jones	Norman
Topping 3g	Crompton 2dg	Sherratt	Clarke T	Temu	Lord T	Faimalo	Kuiti	Green	Bradbury
Topping	Crompton	Sherratt	Clarke	Temu	Lord	Faimalo	Kuiti	Green	Bradbury
Topping 4g	Crompton	Sherratt	Stephenson	Temu	Lord	Faimalo T	Kuiti	Green	Bradbury
Topping 2T 8g	Crompton T	Sherratt	Stephenson	Temu	Lord	Faimalo	Kuiti T	Marsh T	Green 2T
Topping g	Crompton	Sherratt	Clarke	Temu	Faimalo	Lord	Kuiti	Marsh	Green
Topping 4g	Crompton T	Sherratt	Clarke	Temu	Lord	Fiamalo	Kuiti	Marsh	Davidson
Topping 2g	Crompton	Sherratt	Clarke	Temu	Lord	Fiamalo	Kuiti 1T	Gartland	Davidson
Topping 1T 3g	Crompton	Sherratt	Clarke	Temu	Lord	Fiamalo	Kuiti	Marsh	Parr

POLICE APPEAL TO RUGBY LEAGUE SUPPORTERS

If you are intending to visit Tattersfield to watch the match against Doncaster please ensure that you park your vehicle in one of the official car parks. There are three large car parks where cars can be parked at a cost of £1. These car parks are patrolled during the game to deter thefts from vehicles.

Following problems caused by inconsiderate parking on the streets around the ground. The local police have been forced to strictly enforce any breaches of parking restrictions by issuing £20 fixed penalty tickets.

Don't spoil your day out by having to pay an extra £10 for parking. P.S. A1 is closed on 29.1.95. Route to use is M62 to A19 at Whitley Bridge follow A19 towards Doncaster. The ground is on the right 3 miles before Doncaster Town Centre.



MIKE KUITI IN CONTENTION FOR PLAYER OF THE YEAR AWARD... with 40 points so far

CLASSIQUE JEWELLERS PLAYER OF THE MONTH MERIT AWARD

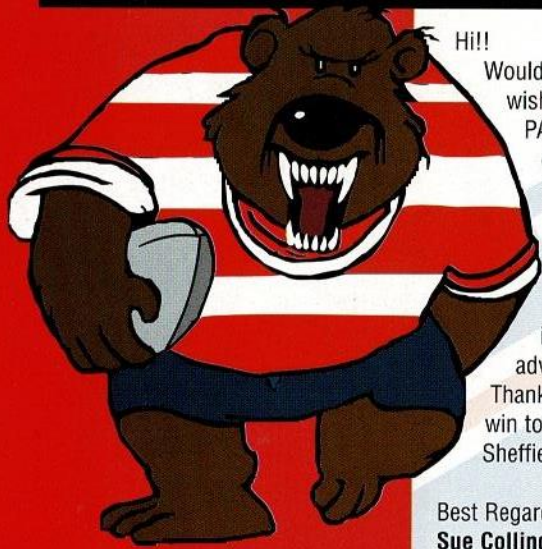
V LEEDS	
KUITI	5
TOPPING	3
IRWIN	1

DECEMBER PLAYER OF THE MONTH.....JASON TEMU
Jason received an engraved medal, a jewellery voucher and a cheque for £50

CLASSIQUE JEWELLERS PLAYER OF THE YEAR AWARD

Present Positions	
KUITI	40
CROMPTON	28
CLARKE	23

JUNIOR ROUGHYEDS



Hi!!

Would any Junior Roughyed wishing to attend the XMAS PARTY (Probably 1 evening during the half term), please contact Sue on 061 681 3397 so that I can confirm numbers for catering.

It is hoped that some of the players will attend, so it is important that I know in advance if you plan to be there. Thanks, and here's hoping for a big win today against our visitors from Sheffield.

Best Regards
Sue Collinge

SUPPORTERS CLUB

We now have tickets printed for our "Valentines Dinner & Disco" at the Village Manor in Uppermill on February 11th. Priced at £12.50 each.

Tickets can be obtained from any Supporters Club Official, or in the Pavilion Bar at today's match.

Please come along and help support this event.

ACADEMY NEWS

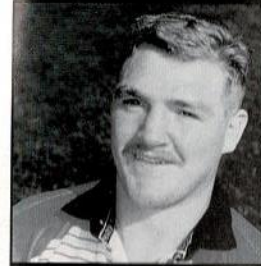
Our academy side started 1995 with a fine win against Huddersfield by 32 points to 12, in atrocious weather conditions and the fact that we haven't played for 3 weeks the match didn't flow but the lads put a lot of effort in to gain the 2 points. Driving rain, snow, and a strong wind was

always going to make handling difficult but we overcame the elements to score fine tries by Billy Tindall 2 Chris McKinney 2 Andy Charlton 1 and Stephen King 1 Richard Badby kicked 4 goals to round of the scoring. Their was also fine performances from Jimmy Cowans and Abe Meade.

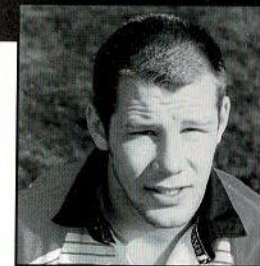
We go to Ryedale York on Saturday again this will be a very stiff test for our lads but hopefully with us having dusted the cobwebs of last night we shall come away with the points. The only blot on last nights win was a jaw injury to our full back Stephen Hunt let's hope its not serious.

WATCH THIS SPACE FOR THE NEW CLUBCALL NUMBER

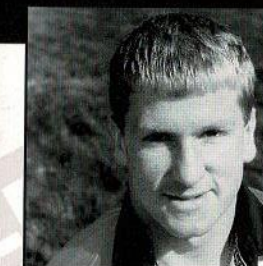
PLAYER SPONSORSHIP



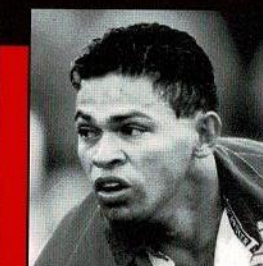
IAN SHERRATT
Bill & Brenda Rogers



JOHN CLARKE
Arc Electrical



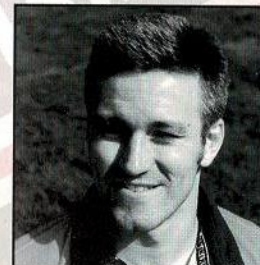
MARTIN CROMPTON
Charleswood Bedrooms



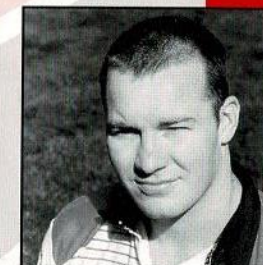
WALLY GIBSON
Specsavers



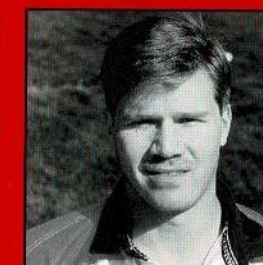
SHAUN IRWIN
Shaun & Pat Whelan



NIGEL HESLOP
Alex Hammond



CHRIS PARR
Irene & Helen Calow



DARREN ABRAM
COCKFIELD FARM

WE'VE CURED HEADACHES FOR THE ROUGHYEDS



Manufacturers of upholstery fillings for over a century, Platt & Hill make foam and fibre fillings of the highest quality right here in Oldham.

So reliable are our products, that Oldham RLFC have selected them to cushion the uprights of their goal posts.

In a way, you see, we've prevented headaches all round!

PLATT & HILL
FOAM AND FIBRE FILLINGS

FIBRE FILLINGS DIVISION:
Belgrave Mill, Keswick Avenue,
Oldham, Lancs OL8 2LZ.
Tel: 061-626 4638. Telex: 669550.
Fax: 061-627 3265.

WATCH THIS SPACE FOR THE NEW CLUBCALL NUMBER.