

# TODAYS LINE UP

# OLDHAM



W Welcome  
Sponsored by

Financial Services Limited, Owl House, 2nd Floor, 59 Great Underbank, Stockport, Cheshire SK1 1NE

NO GUTS NO GLORY

## ROUGHYEDS

- 1 Wally Gibson
- 2 Adrian Belle
- 3 Darren Abrams
- 4 Paul Topping
- 5 Scott Ranson
- 6 Wilson Marsh
- 7 Martin Crompton
- 8 Ian Sherratt
- 9 David Stephenson
- 10 Jason Temu
- 11 Joe Faimalo
- 12 Gary Lord
- 13 Mike Kuiti

- 14 T.B.A.
- 15 T.B.A.

Colours: Red & White

Referee:

Touch Judges:

Big Match Sponsor:

**Dronsfields Commercials**

Man of the Match Sponsor:

**Dino's Bars & Restaurants**

Mitre Matchball Sponsor:

**Hollinwood Weilding**

## CASTLEFORD

- 1 Graham Steadman
- 2 Chris Smith
- 3 Richie Blackmore
- 4 Richard Goddard
- 5 Simon Middleton
- 6 Tony Kemp
- 7 Tony Smith
- 8 Lee Crooks
- 9 Richard Russell
- 10 Dean Sampson
- 11 Tony Morrison
- 12 Andy Hay
- 13 Tawera Nikau

- 14 Lee Harland

- 15 Nathan Sykes

Colours: Black & Amber

S. Cummings (Widnes)

M. Hesketh

J. Fallon

OFFICIAL CLUB SPONSOR



ROUGHYEDS



RLFC  
versus

CASTLEFORD

Tuesday March 28th 1995

Kick Off 7.30pm

Tonight's Match Sponsors

Big Match: Dronsfields Commercials

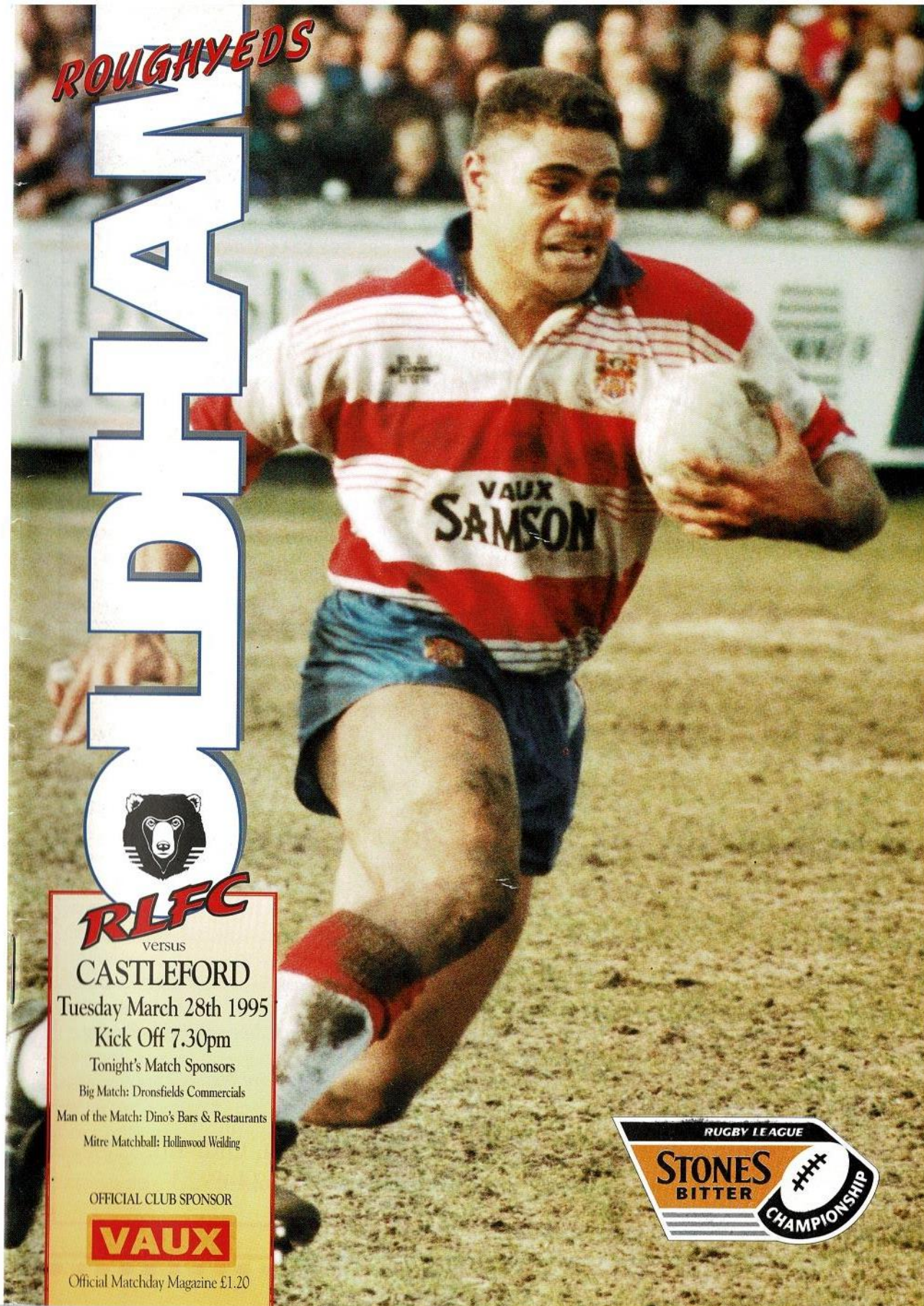
Man of the Match: Dino's Bars & Restaurants

Mitre Matchball: Hollinwood Weilding

OFFICIAL CLUB SPONSOR

**VAUX**

Official Matchday Magazine £1.20



# ROLL OF HONOUR

## OLDHAM RUGBY LEAGUE FOOTBALL CLUB

### CLUB HONOURS

**Rugby League Championship Play-off Winners**  
1909-10, 1910-11, 1956-57

**Runners Up**  
1906-07, 1907-08, 1908-09, 1921-22, 1954-55

**First Division Champions**  
1904-05

**Second Division Champions**  
1963-64, 1981-82, 1987-88

**Rugby League Challenge Cup Winners**  
1898-99, 1924-25, 1926-27

**Runners Up**  
1906-07, 1911-12, 1923-24, 1925-26

**Lancashire Cup Winners**  
1907-08, 1910-11, 1913-14, 1919-20, 1924-25, 1933-34, 1956-57, 1957-58, 1958-59

**Runners Up**  
1908-09, 1911-12, 1918-19, 1921-22, 1954-55, 1966-67, 1968-69, 1986-87, 1989-90

**Lancashire Championship Winners**  
1907-08, 1909-10, 1921-22, 1956-57, 1957-58

**Runners Up**  
1908-09, 1910-11, 1911-12, 1919-20, 1923-34, 1954-55

**Lancashire Shield Winners**  
1975-76, 1979-80

**Colts Premiership Trophy**  
1979-80, 1989-90

**Second Division Premiership**  
1987-88

**Wigan Sevens Winners**  
1991-92

### CLUB RECORDS

**Record Victory:** 67-6 v Liverpool City April 1959

**Record Defeat:** 11-67 by Hull K.R. September 1978

**Record Attendance:** 28,000 v Huddersfield 24th February 1912

**Record Receipts:** £37,505.50 v Wigan 5th October 1989

**Record Transfer:** £70,000 to Halifax for Tony Anderson March 1990

**Record Try:** Ref Farrar, 49 Tries, 1921-22 season

**Record Goal:** Bernard Ganley, 224 goals, 1957-58 season

**Record Point:** Bernard Ganley, 28 points v Liverpool City, April 1959

**First Game:** 21st October 1876 v Stalybridge

**Highest Number of Points Scored:** Bernard Ganley, 2,881

**Most Appearances:** Joe Ferguson, 685

**Most Tries:** Pre 1900 Jach Hirst 233 Since 1900 Alan Davies 182



**The Pavilion, Watersheddings, Oldham**  
**Telephone: 061 652 5244 & 061 624 4865**

**Chairman: Jim Quinn**  
**Directors: John Chadwick, Roger Norris, Mike Winterbottom**

**General Manager: Terry Donovan**  
**Club Secretary: Karen Scott**  
**Commercial Manager: Ray Hill**  
**Hon Doctors: Dr. G. Radcliffe, Dr. D. Atherton**  
**Dental Surgeon: Mr. N. Gibbison**  
**Physiotherapists: Mr. N. Hodgson, Mr. A. Bonnelle (adviser)**  
**Assistant Physiotherapist: Mr. J. Watkins**  
**Coach: Andy Goodway**  
**'Football Manager: Alan McCurrie**  
**Alliance Coach: Dennis McHugh**  
**Academy Manager: Brian Gartland**  
**Hon. Consultant Orthopaedic Surgeons: Mr. H. Thompson, Mr. D. Walker**  
**Official Timekeeper: Mr. J. Roscoe**  
**Hon. Safety Officer: Roger Norris**

## MARIO'S PIZZERIA & TRATTORIA



*We like to feed a winning team for the best pizza's & pasta in town, call in and try us. Just like Oldham Rugby we are No. 1.*

**125 Yorkshire Street, Oldham.**  
**Telephone: 061-624-6923**

# FROM THE BOARDROOM

## BY CHAIRMAN JIM QUINN

MY article had to be written before Saturday's Silk Cut Challenge Cup semi-final against Wigan but, even without the knowledge of what happened at the Alfred McAlpine Stadium, I would like to refer to the effect the draw had on the Oldham players when they were paired with Wigan.

Athletes are highly sensitive creatures and I think we must bear that in mind when considering the poor performance at Widnes only six days before the semi-final. It was no coincidence that Leeds, who play Featherstone in the second semi-final, slipped up at Sheffield on the same day and then lost at home to Saints in midweek.

Our players must have been thinking about the Wigan game and focusing on how to do the best they possibly could in a big-match atmosphere against the best club side in the world and in front of a national TV audience.

While on the subject of the semi-final I would like to say how much the club appreciated a call from the Athletic chairman Ian Stott, who congratulated us on our achievement in reaching the last four and wished us all the best on the big day.

It is good that two professional clubs in the same town can enjoy such a relationship and it reminds us that over the past few years the town has done superbly well with Athletic's two trips to Wembley and all their other successes and our promotion to the

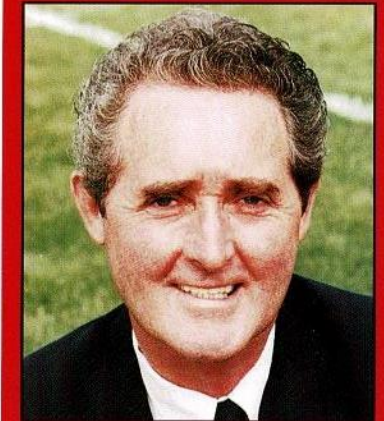
first division and Challenge Cup semi-final appearances in 1990, 1991 and 1995.

To say the town is one of the few to boast Rugby League and soccer at the level we have available here, I think Oldham can be very proud indeed of the town's sporting achievements.

I would just like to put the record straight, on another subject, regarding an article which appeared in our club programme recently, written by GMR's Rugby League man, Malcolm Lord.

Malcolm referred to events at the Leigh club and had some critical things to say about how the chairman had handled them. I feel it is important to place on record that the Oldham board of directors was not happy to see such comments in the club's official match programme. The article got through our screening system and we wish it hadn't.

To start with, whatever goes on at another club is no concern of Oldham. Secondly, senior club officials put in a tremendous amount to keep their clubs going in difficult times. They ask little in return and I think it is fair to say that the Leigh chairman and his fellow officials have been under overwhelming pressure this past year or so, a situation that was not reflected in the article. Tonight we welcome Castleford to Watersheddings for a match which was originally scheduled to go ahead



tomorrow. We welcome chairman Eddie Ashton, his board and the Castleford players and fans. We are looking forward to a good, fast open game of rugby and hopefully we can turn the tables after our recent defeat at Wheldon Road.

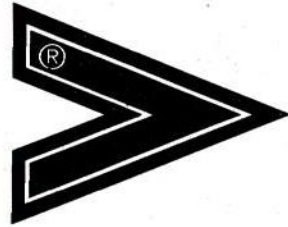
The game was brought forward to fall in line with the Rugby League's TV schedules.

Financially, television is a major part of the game and if we want the money we have to respect that the TV people want a major say in things.

We have co-operated with the Rugby League so that Castleford can play Warrington on Friday night for Sky. Finally, may I take this opportunity of requesting your loyal support over the final few weeks of the season.

After tonight we have only one more home game in the league - Salford on Good Friday. Hope to see you there and also at the remaining Alliance games at Watersheddings as our 'A' team goes all out for the first division championship.

TODAY'S MATCHBALL SUPPLIED BY



**Mitre**

MITRE SPORTS INTERNATIONAL LTD.  
BIRKBY, HUDDERSFIELD, HD1 5AJ. TEL: 0484 537488. FAX: 0484 530042

A GENESCO Company



**The Kit Choice of Champions.**

# CLOSE UP ON CASTLEFORD

## Our visitors in detail

### GRAHAM STEADMAN

Castleford's club record signing Graham joined the club from near neighbours Featherstone in a £170,000 deal five seasons back. Previously with York he has been a consistent points scorer throughout his career. Having gained representative honours at stand-off a switch to full back took Graham to even further success including a starring role on the last Great Britain tour to Australia. This season has seen Graham in good form and he added to his Test caps against the Aussie tourists.

### CHRIS SMITH

One of the club's very promising youngsters, Chris broke into the first team at the end of last season and showed some good form on the wing through the Premiership campaign. A local product who came from the Academy team, gaining Great Britain honours at that level including a tour to Australia last summer. This season Chris has stepped up a further rung with a Gt Britain Under 21 place.

### RICHARD BLACKMORE

Powerful Kiwi centre who has gained Test honours for his country including last season's series in Great Britain. In his time at Cas Ritchie has had to overcome a couple of serious injuries but last term was perhaps his best when he played a big part in St. John Ellis's record haul of tries as well as being a prolific scorer himself. Set to return home later this year to join Auckland Warriors.

### RICHARD GODDARD

A close season signing from Wakefield Trinity, with a £75,000 fee being set by the tribunal. Richard already has Great Britain Under 21 honours and at just twenty looks to have a big future in the game. A product of Stanley ARL which has over the years provided Cas with some top talent.

### SIMON MIDDLETON

Simon switched codes after a long career in local rugby union and has settled very well to league after his move from Knottingley RU. He has been a regular scorer for Cas, last season being his best, and has himself proved to have been one of Darryl Van de Veldes shrewdest acquisitions.

### TONY KEMP

Another New Zealand Test player, Tony is in his second season at Castleford having joined up from the Newcastle Knights club in Australia. As well as proving himself in the Aussie league Tony came to the club with plenty of 'English' experience following two stints with Doncaster and as a Kiwi tourist.

### TONY SMITH

A key utility player, Tony has the ability to slot into either half back position as well as centre where he has played most of his recent rugby. A local product with GB under 21 honours, Tony's great support play brings him a regular flow of tries.

### GARETH STEPHENS

Another close season signing, Gareth returned to his junior roots at Cas having started out his professional career with Leeds. Despite gaining GB under 21 honours Gareth was unable to secure a regular slot at Headingley and Cas moved in to secure his signature when their scrum half spot became vacant. Keen to prove himself at the club where his father did so well, Gareth is another young player who looks to have a big future.

### LEE CROOKS

Club captain, pack leader and goal kicker, Lee was another buy from the Headingley club. He quickly became a key figure at the club and in turn his representative career was resurrected, with county and test call ups being added to an already healthy total of representative honours. Lee started his career on his native Humberside, where he gained a string of honours whilst still a teenager, and has gone on to become one of the game's biggest names.

### RICHARD RUSSELL

One of the most consistent performers last term, Richard proved himself an outstanding recruit from the Oldham club and many good judges felt that a representative call up would have been justified. He already holds Under 21 honours from his time at Wigan, when he played at centre. However he now looks very comfortable in the hooking role for which coach John Joyner signed him and his impressive form at Cas has deservedly won him full England honours this term.

### DEAN SAMPSON

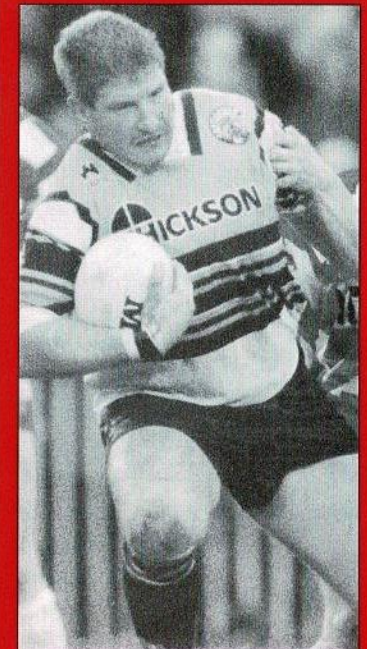
Yet another at Cas with GB under 21 honours, Dean added a tour call up, as late replacement to the party in New Zealand, to his honours record a couple of years back. However it remains a mystery to many why he hasn't had further calls from the GB management. A Stanley ARL product, Dean is very popular with the Castleford faithful and although frequently used as a substitute looked impressive when given a regular prop spot last term.

### NATHAN SYKES

A highly rated junior player from the Moldgreen Club in Huddersfield, Nathan is making good progress as he establishes himself in the senior squad. Castleford beat off a host of opposition to sign him and his promise is being realised with Academy international and tourist honours and a GB Under 21 cap already.

### TONY MORRISON

A bargain buy from Swinton, Tony is an all action back row forward on both attack and defence. He came into the game from junior rugby in the St. Helens area before signing for Oldham, and then



**Lee Crooks - Captain**

on to Swinton. As captain he was outstanding in the 'Lions' outfit and Castleford, who had noticed his form, moved in quickly when his contract came to an end.

### IAN SMALES

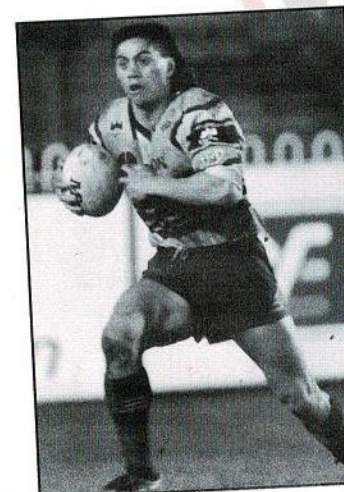
A capture on the eve of last season from neighbours Featherstone, Ian immediately established himself in the Cas second row and was one of the stars of the successful Regal Trophy team. A Gt Britain tourist Ian has switched from the back division to the pack but still has an eye for the tryline, reaching double figures last season. Originally with Castleford amateurs Lock Lane A.R.L. before joining Rovers.

### ANDY HAY

A big success story last term for Castleford, Andy clinched a regular first team spot for the first time and the former Redhill Junior never looked back. With a string of junior representative honours big things have always been expected of Andy and whilst injuries hampered his early progress if he can develop from last term then his career prospects look very bright.

### TAWERA NIKAU

Currently ranked amongst the world's best loose forward Tawera has proved his class in both 1st Division and in the Test arena with New Zealand. He has Australian experience with Canterbury-Bankstown, whilst Sheffield and York gave him English experience before he linked up with Cas. He has proved a valuable asset to the club and supporters were delighted when at the end of last term he signed for another two years, especially as the newly formed Auckland Warriors were reportedly keen to take him home.



**Tawera Nikau**

NEW CLUBCALL NUMBER 0891 122 772

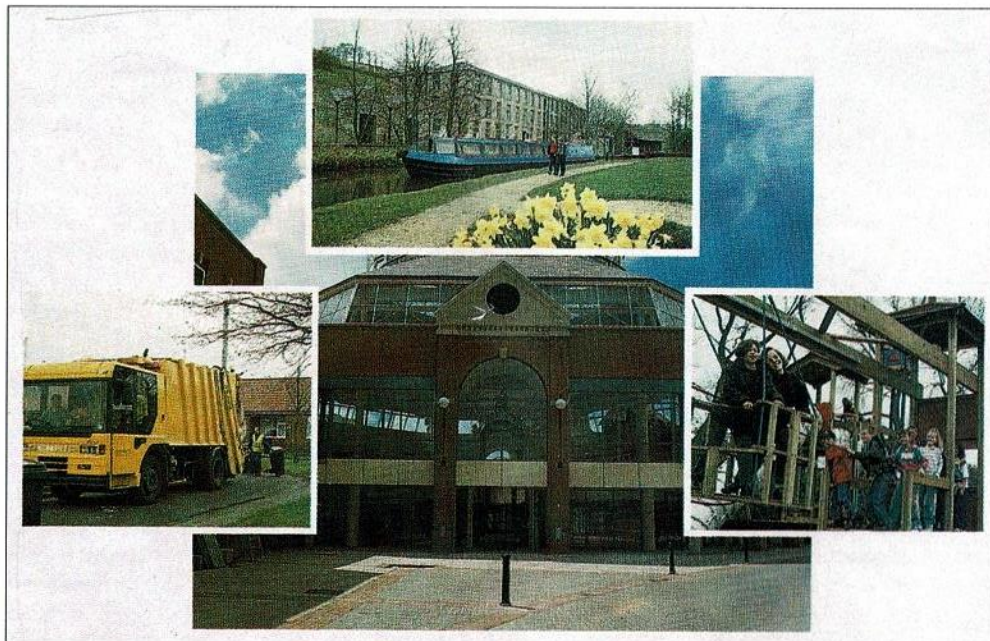
NEW CLUBCALL NUMBER: 0891 122 772

# Tackling the issues...



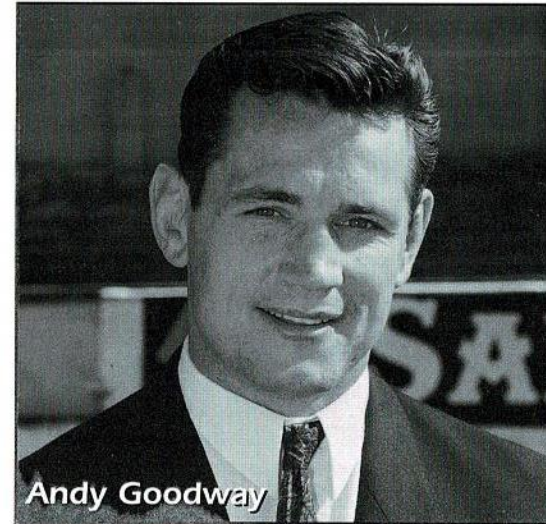
## on all fronts!

Employment and economic development, education, the environment, housing, recreation and culture, social services, roads and transport plus a good deal more!

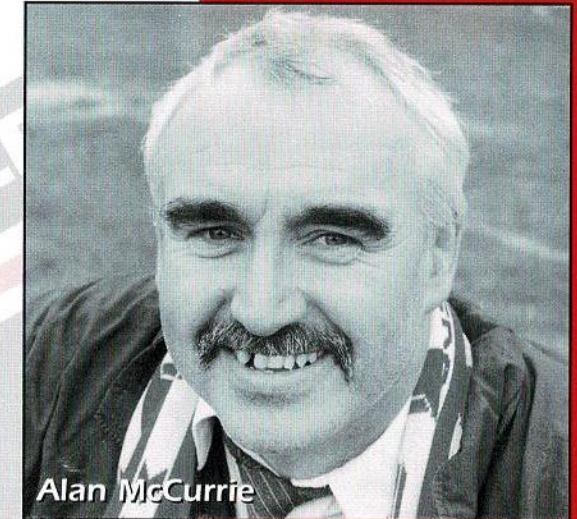


Enquiries about Council services and policies to the Chief Executive's Department  
Telephone: 061-911-4708

# GOODWAY & McCURRIE



Andy Goodway



Alan McCurrie

As you read these notes, our dreams of a first Wembley will have been realised or dashed. Regardless of the outcome of the Wigan clash the coaching staff and players will be doing everything in their power to ensure that 100% effort is given to every game for the remainder of the season.

Our target is still a top eight place and this is a realistic goal. We feel that our season should be judged on our league placing and a good cup run is icing on the cake. You can rest assured that no one will be resting on their laurels for tonight's match as we see this as an important game in our quest for a top eight place.

We would like to thank you for your support, the players appreciate it and will always respond to your vociferous encouragement.

### STONES BITTER CHAMPIONSHIP Division One

	P	W	D	L	For	Agst	Pts
Wigan	23	22	0	1	832	290	44
Leeds	25	20	1	4	716	439	41
St. Helens	26	17	1	8	734	558	35
Warrington	25	16	2	7	656	448	34
Halifax	24	15	2	7	655	402	32
Castleford	24	15	2	7	652	467	32
Bradford N	25	14	1	10	631	496	29
Sheffield E	25	11	0	14	491	610	22
<b>Oldham</b>	<b>24</b>	<b>9</b>	<b>1</b>	<b>14</b>	<b>433</b>	<b>590</b>	<b>19</b>
Featherstone	24	8	1	15	476	538	17
Salford	25	8	1	16	486	668	17
Widnes	23	8	1	14	355	538	17
Workington	25	8	1	16	394	641	17
Wakefield	25	8	0	17	365	593	15
Doncaster	24	5	1	18	385	716	11
Hull	25	4	1	20	465	732	9

NEW CLUBCALL NUMBER 0891 122 772

# ROUGHYED MERCHANDISE

Oldham Rugby Mugs  
NOW DUE IN

\*\*\*\*\*  
BRONX HATS arriving Shortly  
(Navy & Red)

**SHOP SALE NOW ON**  
Call in and get yourself a bargain  
Limited Number of Baby Coats

	Pre Sale	Sale		Pre Sale	Sale
REPLICA SHIRTS			Drill Zipped Bomber Jackets (age 2-5)	18.99	15.99
	Adults . . . . .34.99	27.99	Cord Hooded Jackets (age 1-3)	18.99	
	Childrens . . . . .29.99	23.99	Black Cord Toggle Jacket (age 4-6)	24.99	
TRACKSUITS	up to 32		Lined Bomber Jacket	49.99	
	Adults . . . . .54.99	43.99	Roll Neck Sweater	20.00	
	Childrens . . . . .49.99	39.99	White Dress Shirts	15.00	
Roughyed T-Shirts	up to 32		Oldham Rugby Towels	5.00	
	Boys . . . . .12.00	9.60	Key Rings	2.50	
	M. EXL . . . . .16.00	12.80	Roughyeds Long Sleeve Sweatshirts	25.00	20.00
Roughyed Sweatshirts	Boys . . . . .19.50		Roughyeds Short Sleeve Sweatshirts	22.50	18.00
	M. EXL . . . . .25.00	20.00	Polo Shirts	15.99	12.79
Mitre & Oldham	Rugby Balls . . . . .10.00		Shorts	12.99	10.39
	Mini Balls . . . . .3.99		Shorts	14.99	11.99
Rugby Nuts			Socks	5.99pr	4.99pr
Belts (Oldham rugby leather)			Framed Pictures of Watershedding	45.00	36.00
Car Sticker			originals limited edition		
Hats & Scarves			Framed Picture of Rugby League Legends	25.00 each	
Umbrella					
Pennants					
Rugby Wobbler					

CENTENARY BADGES IN A PRESENTATION BOX  
(Original Design) ORDERS BEING TAKEN  
CENTENARY TIE PIN, CUFF LINKS & KEY RINGS

WHY NOT VISIT SPINDELLS SHOPPING CENTRE AND  
LOOK AT OUR STALL. LOTS OF BARGAINS TO BE HAD

SHOP OPENING HOURS:-  
Mon to Fri: 9.30am to 4.00pm  
Saturday: 10.00am to 2.00pm  
Matchday: 1.00pm to 3.00pm  
4.30pm to 5.00pm

**ROUGHYED TELEPHONE ORDERS**  
THIS SERVICE IS AVAILABLE

**061 624 4865**



Mark  
Cheetham of  
Tanfield  
(Oldham)  
Limited hands  
the keys of  
the sponsored  
car to John  
Watkins.  
Jason Temu  
and Joe  
Faimalo look  
on.

**TANFIELD (Oldham) Limited**

125 Chamber Road,  
Oldham,  
Lancashire.  
OL8 1AA  
Tel: 061-633 4872  
061-627 0435  
Fax: 061-627 0448



**TANFIELD (Oldham) LIMITED**



**OLDHAM Rugby League Club**

*working together*

# BUSINESS TALK

with Ray Hill

## OLDHAM RUGBY LEAGUE OFFICIAL WEMBLEY TRIP

\* Executive coach,  
travel toilet, video,  
hostess service,

Leaving Saturday  
Morning 29th April

\* Saturday night stop over at the  
four star Scandic Crown Hotel  
Victoria.

Full English breakfast, swimming  
pool, gym, sauna, jacuzzi.

\* £30 Seat ticket included

\* Sightseeing Sunday morning

Arriving back in Oldham approx.  
6.00p.m.

\* £130 per person sharing twin  
room £15 supplement for single  
room.

Ring Ray Hill for more details

**061 624 4865**

## OLDHAM RUGBY GOLF CLASSIQUE 5th May 1995

\* Venue Oldham Golf Club  
\* Entry Fee £150 Per team of  
four  
\* Format better ball stableford  
\* Prizes. A generous supply of  
prizes to be won. Prizes for  
the top ten.

\* Teams  
\* Wooden spoon prize  
\* Longest drive  
\* Nearest to the pin  
\* A special hole in one prize  
\* Your companies support  
would be appreciated and we  
are taking this opportunity to  
invite you to enter a team

For further details contact Ray  
Hill on 061 624 4865

## THE INTERNATIONAL GROUNDS OF RUGBY LEAGUE

by Trevor Delaney

This profusely illustrated book, which is to  
be published in time for the game's  
centenary in August 1995, is an ambitious  
companion to the widely-acclaimed The  
Grounds of Rugby League.

Apart from all the major English venues, The  
International Grounds of Rugby League will  
also cover every ground in the world where  
international and test matches have been  
played by the game's leading International  
Board countries over the last century - over  
100 grounds in total.

There will therefore be the following specific  
sections written by an expert on that  
particular country or region: Australia;  
England (including soccer and other venues,  
such as Wembley, and the proposed

Centenary World Cup venues, such as the  
Alfred McAlpine Stadium; France; New  
Zealand; Papua New Guinea; Wales; and the  
Pacific Islands; Fiji; Tonga and Western  
Somoa.

The page format of this (approximately  
208pp) softback edition will be 198mm x  
210mm; and there will be a full colour cover  
and an 8 page full colour section.

### PRE-PUBLICATION SUBSCRIPTION OFFER (Ends 15 May 1995)

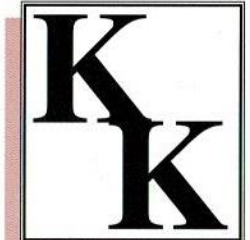
If you would like your name to appear in the  
subscription list at the rear of this first  
edition, please complete the form below and  
send £14.95 (which includes postage and  
packaging) to:

T.R. Delaney, 6 Elmwood Terrace, Ingrow,  
Keighley BD22 7DP, West Yorkshire.  
Tel: 01535 215550

(Please make cheques payable to T.R. delaney)

AGENTS AND CANVASSERS WANTED IN ALL AREAS. EXCELLENT  
COMMISSION RING RAY OR JOHN 061 624 4865

NEW CLUBCALL NUMBER: 0891 122 722



KEVIN  
KERSHAW  
ASSOCIATES

Commercial,  
Criminal & Private  
Investigations

Suite 3, Good Hope  
House, Bentinck St  
Ashton-Under-Lyne,  
Lancashire OL6 7SL

Telephone:  
061-343 6510

Mobile:  
0374 455905

Fax  
061-339-0046



# McCarthy's Catering

CELEBRATING A WEDDING, ANNIVERSARY, 18TH, 21ST OR EVEN A SPORTSMEN DINNER, WE CAN OFFER AN EXTENSIVE SELECTION OF HOT AND COLD FOOD



COMMERCIAL ENQUIRIES VERY WELCOME

## 0457 832607

VALE MILL LODGE, HUDDERSFIELD ROAD, MICKLEHURST, MOSSLEY

## 'Oldham Born...



## ... and Read'

"WHEN YOU AIM FOR PERFECTION YOU DISCOVER IT IS A MORNING TARGET."  
- Joseph Crossman

# GRASS ROOTS

## A LOOK AT THE LOCAL AMATEUR RUGBY SCENE

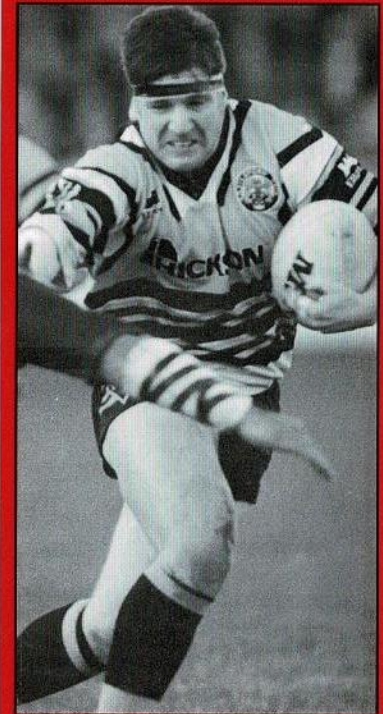
Oldham's Challenge Cup tie against Wigan was not the only big cup tie involving a local club which was played last Saturday. At amateur level St. Annes entertained Skirlaugh in the fifth round of the BNFL National Cup. Although these notes were penned prior to that match being played, Saints and their supporters were confident that they were capable of eliminating the Yorkshire Cup holders. Victory by Saints would have taken them into the last 16 alongside Saddleworth Rangers and the other big names of the amateur Rugby League scene.

As well as their involvement in the National Cup competition, both St. Annes and Saddleworth have a huge backlog of fixtures to fulfil in the National Conference League. Local enthusiasts wishing to follow the fortunes of these clubs in the vital closing stages of the season should refer to the superb coverage of the amateur game in Thursday's edition of the Oldham Chronicle. Saddleworth are currently involved in the relegation scramble towards the lower end of the Premier League table. Before last weekend Rangers were lying in third from bottom spot. With two clubs due to be relegated, it is essential that Saddleworth pick up points from their remaining seven matches only three of which are at home. Those

three home matches are against Leigh Miners, Woolston Rovers and Mayfield whilst Rangers are called upon to travel to Egremont Rangers, Woolston Rovers, Dudley Hill and Mayfield. Askam looked doomed already and should Rangers win that match at Dudley Hill then the Bradford outfit likely to be joining them in the First Division. St. Annes have an outside chance of promotion from the Conference first Division. Favourites for promotion are Lock Lane and Millom, Saints will have to pull back six points from that leading duo if they are to achieve their objective and they have six matches to do it in. Saints visit Moldgreen and East Leeds and entertain Beverley, Blackpool Gladiators, Moldgreen and Leigh East. Although it is a tall order, Saints are capable of winning all those matches. Lock Lane's run in is relatively easy and they are heavily fancied to gain promotion as Champions but Millom face a difficult finish to their season so it would not surprise me if Saints ended the season with a late flourish and with promotion. Indeed Saints are set for an exciting couple of month battling along on three fronts, Conference League, National Cup and Standard Cup.

Don Yates

# ONE TO WATCH



Richard Russell former Wigan and Oldham player now playing his best Rugby for Castleford. Played for England against Wales earlier this year

## BEE FAMILY FINANCE IF YOU REQUIRE CREDIT FOR

- Household Goods
- Carpets
- Furniture
- TV's
- Car repairs etc

We can also arrange credit facilities for leading fashion shops in Oldham and Manchester

A family business that looks after your family's needs  
**JUST CALL IN AT THE BEE FOR FRIENDLY ADVICE**  
Telephone: 624 9908

NEW CLUBCALL NUMBER: 0891 122 722



**Colourplan**  
design & print

**Colourplan**  
design & print

Designers and Printers of the Oldham RLFC Matchday Magazine  
11 Waterside Court, St. Helens Technology Campus, St. Helens, WA9 1UA  
Tel: (0744) 723868 Fax: (0744) 754416/753029

# TODAY'S BIG MATCH SPONSORS

**BIG MATCH SPONSOR**

## **DRONSFIELDS**

**NEW & USED MERCEDES  
VEHICLES & SPARES**

DELPH NEW ROAD, DELPH,  
OLDHAM, OL3 5DE

*UK NEXT DAY  
DELIVERY SERVICE  
VERY COMPETITIVE PRICES*

*OPEN 7 DAYS*

**TEL: (0457) 871717**

**MAN OF THE MATCH SPONSOR**

## **DINO'S BARS AND RESTAURANTS**

79 Union Street,  
Oldham

Tel: 061 620 1554

*Small Sportsmans Dinners a Speciality*

**MITRE MATCHBALL SPONSOR**

## **HOLLINWOOD WELDING CO. LTD.**

**Textile Repairs and General Engineering**

Registered Office:

Busk Road,

Oldham OL9 6QZ

Telephone: 061 624 2750 Fax: 061 627 3051

# **PAUL ABBOTT LIMITED SPRINGHEAD GARAGE**

*Quality Used  
Cars and First  
Class Servicing*



**TEL: 0161 624 2725 • FAX: 0161 624 5128**

**NEW CLUBCALL NUMBER: 0891 122 722**

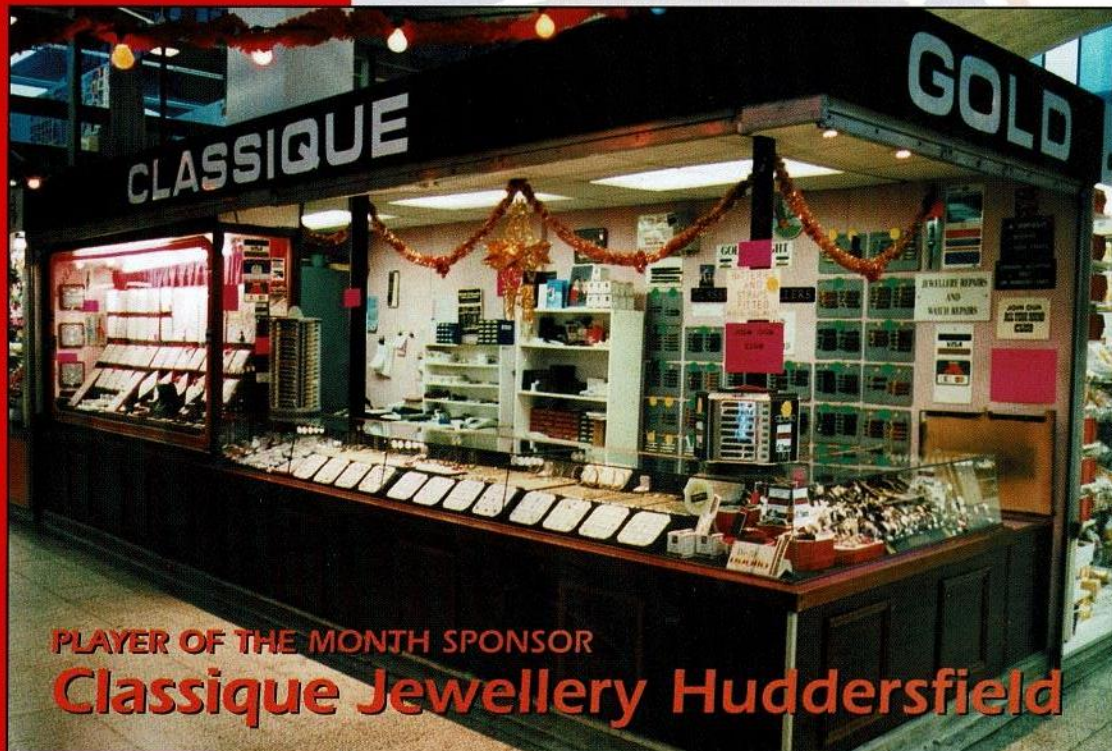
# HOLROYD Skip Hire Ltd.

DIGGER & TRACKED  
MACHINE HIRE



**YOUR FIRST CHOICE IN  
WASTE REMOVAL**

TELEPHONE:  
**061-642 1118 OR 061-624 1311**  
EVENINGS FAX:  
**061-624 1171**  
LITTLE END FARM, MOORSIDE, OLDHAM.



PLAYER OF THE MONTH SPONSOR  
**Classique Jewellery Huddersfield**

"THE SURE WAY TO BE LATE IS TO HAVE P[LENTY OF TIME]"  
- Mark Twain.

# CASH <sup>BIG LEAGUE</sup> BONANZA

**JOIN NOW £1500** won every week  
YOUR CHANCE TO WIN £1000 A WEEK ■ £100 A DAY MONDAY TO FRIDAY  
FOR ONLY £1 PER WEEK

Payable by Banker's Order or collected at your place of work, local pub or newsagent. Why not become an agent yourself and earn generous commission?

## WEEK No. 8 - Week Ending February 26th 1995

<b>£1000</b> <b>Winner:</b> C8671 <b>Agent:</b>	W. Brierley E. Whalley	<b>EXTRA £10 BONUS PRIZE</b> <b>Winner:</b> A4528	S. Wilson
<b>Monday £100</b> <b>Winner:</b> A4748 <b>Agent:</b>	J. Whatmough M. Dransfield	<b>Winner:</b> F5289	J. Ogden
<b>Tuesday £100</b> <b>Winner:</b> D2465 <b>Agent:</b>	A.V. Brogden M. Allingham	<b>Winner:</b> C6288	R. Butterworth
<b>Wednesday £100</b> <b>Winner:</b> F7924 <b>Agent:</b>	T. Smith Highfield Inn	<b>Winner:</b> D7748	J. Crompton
<b>Thursday £100</b> <b>Winner:</b> E1622 <b>Agent:</b>	N. Corcoran Trippers News	<b>Winner:</b> D1046	J. Marsland
<b>Friday £100</b> <b>Winner:</b> D8787 <b>Agent:</b>	A. Houghton Royal Oak	<b>Winner:</b> H4897	p. Ellingworth
		<b>Winner:</b> E1595	B. Jackson
		<b>Winner:</b> E8262	B. Rouse
		<b>Winner:</b> D0311	M. Edwards
		<b>Winner:</b> A4261	K Fletcher

£50 Agents Prize Draw: 141 - T. Myers

COLLECTORS AND CANVASSERS WANTED IN ALL AREAS (Excellent Commission) TELEPHONE 061-620-4870

CASH BONANZA HOTLINE 061 620 4870

## GARFORTH GLASS & MIRROR CENTRE

Established 1945

### GLASS DEPT

- ✦ Glass cut to size
- ✦ Toughened Glass
- ✦ Laminated Glass
- ✦ Double Glazing
- ✦ Glass Table Tops
- ✦ Glass Cabinet Doors
- ✦ Glass Shelves
- ✦ Holes Cut & Drilled
- ✦ Decorative Glass Engraving
- ✦ Putty, Beading Silicone
- ✦ Decorative Leading
- ✦ Delivery Service
- ✦ Rigid Plastic Sheet

### MIRROR CENTRE

- ✦ Large Showrooms on two floors
- ✦ Extensive range of framed & frameless mirrors
- ✦ Mirrors made to size
- ✦ Bevelled edge mirrors
- ✦ Brilliant cut mirrors
- ✦ Engraved design mirrors (e.g. Birds, Flowers, Fish etc)
- ✦ Security Mirrors

### PICTURE FRAMING

- ✦ Bespoke picture framing
- ✦ Tapestries, embroideries, oils, stretched & framed
- ✦ Mounts cut to size
- ✦ Drymounting & heat sealing
- ✦ Readymade frames including ovals & swept
- ✦ Photoframes
- ✦ Clip frames stocked & made to size
- ✦ Chop & assembly service for D.I.Y.
- ✦ 'Special Offer' mouldings always in stock

*Personal, Friendly service from a family firm!*

49-55 CO-OPERATIVE STREET, SPRINGHEAD, NR. LEES, OLDHAM

TEL: 061-624 7495 FAX: 061-627 5347



# MALCOLM LORD

THE FACE BEHIND THE VOICE OF BBC GMR'S RUGBY LEAGUE

## FOOD FOR THOUGHT

As the Rugby Football League Centenary approaches I thought it might provide food for thought if we did an analysis based on attendances and then compared them with soccer, the result is frightening.

Manchester United Football Club are shortly to start work on a new stand which will increase their capacity to 55,000 for home games.

The total attendance at all 15 Rugby League games (including the Friday night fixture St. Helens v Bradford Northern) of the weekend of 18/19 March 1995 came to 46163. Now you might say this is not reflective of the norm, because Wigan were away alright, lets add another 7000 to allow for that.

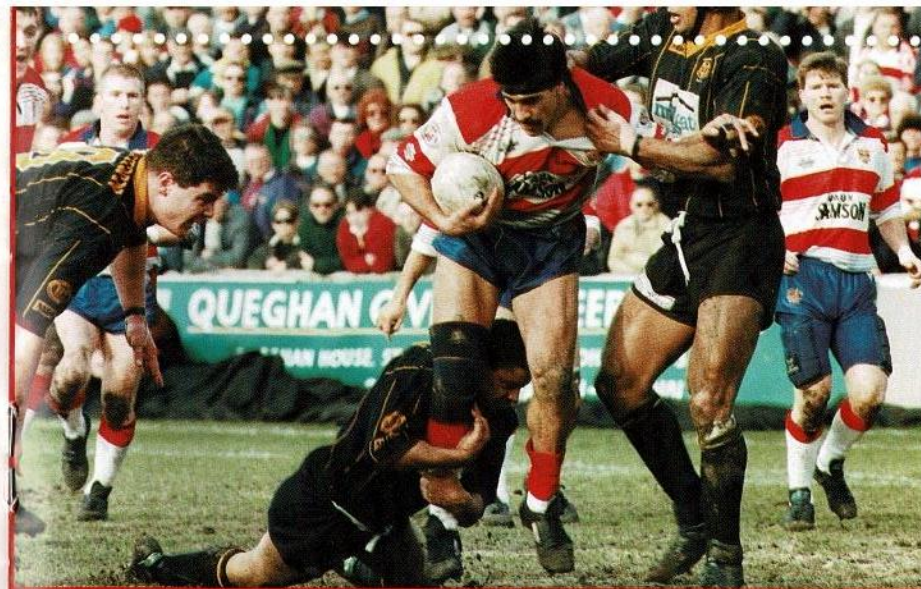
The total would, still fall a couple of thousand short of what United could hope to get in just one game.

Four of the games or 25% had less than 1000 spectators watching with only 196 at the Highfield v Carlisle game. Indeed only 9009 attended second division Rugby League and almost 5500 were at just 2 games (Huddersfield v Whitehaven and Hunslet v Keighley).

Now you can juggle about with figures all you want, but the word that comes to mind is pathetic and if something is not done quickly to remedy this the whole future of our game is in doubt.

I don't pretend to know the answer's I'm just providing some food for thought, hope I haven't given you indigestion?

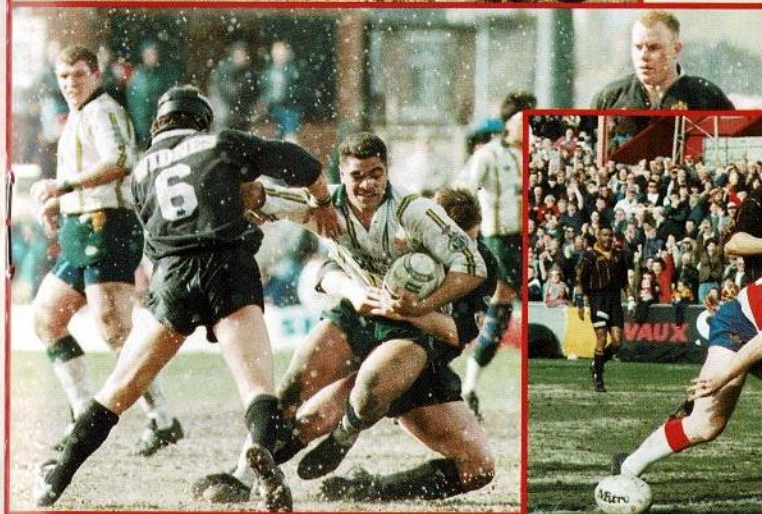
Malcolm Lord  
BBC GMR



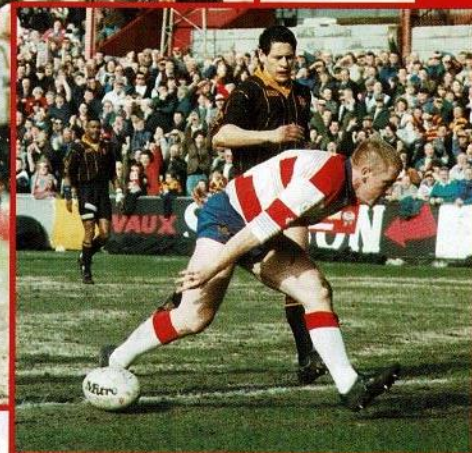
Top: Mike Kuiti trying to break through the Huddersfield defence.



Middle: A Widnes player getting some close attention from the Oldham pack.



Bottom left: Big Joe Faimalo trying to break through the Widnes cover.



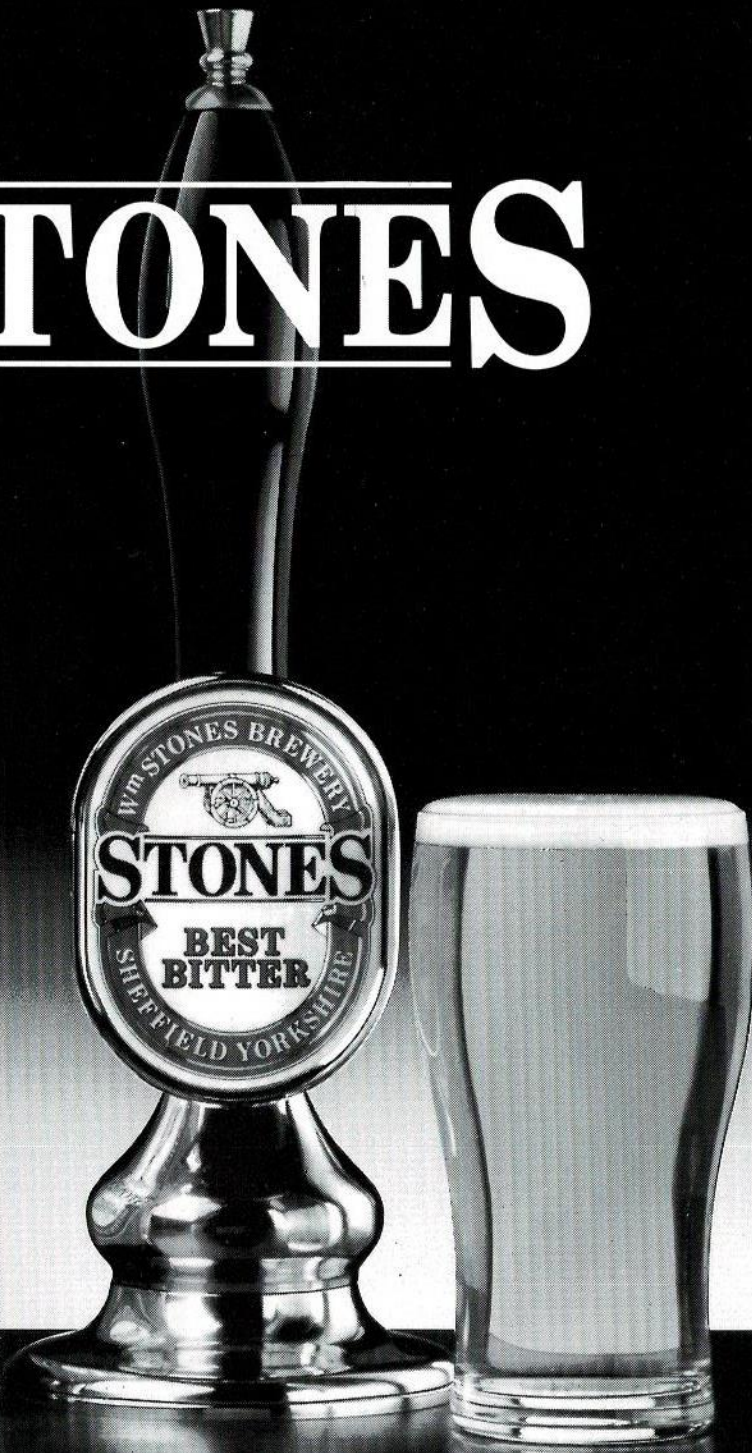
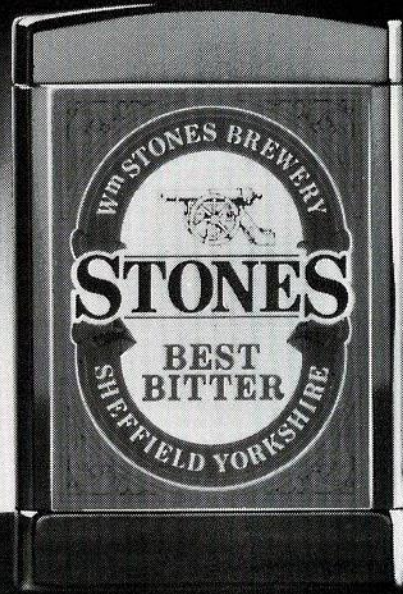
Bottom right: Martin Crompton scoring the first try against Huddersfield.

Photographs courtesy of the Oldham Evening Chronicle.

# ACTION REPLAY

Stones Bitter Championship  
v WIDNES & v HUDDERSFIELD

# STONES



THE MAJOR SPONSOR OF RUGBY LEAGUE.

## Sponsorship & Hospitality Packages 1994/95



During the year we hold many fundraising and promotional events for companies.

Why not sponsor the whole event? This includes all publicity material carrying your company message or logo, photograph in the local press and matchday programme. Also the opportunity to discuss your product or service with a 'captive' audience.

This Years Events Include:-

### GOLF TOURNAMENT

A day out for guests or colleagues at a local golfing venue. Enjoy the chance of winning a new car for a hole-in-one at a designated hole. This together with a meal after your round and a prize giving ceremony with a comedian or speaker makes the whole day one to remember.

### SPORTSMANS EVENINGS

After the success of our last two dinners tickets are in great demand. Again supported by local media and businesses gives you and your company the opportunity of entertaining guests for a full evening of quality. Quality food, quality wine, quality speakers.

### LUNCHEON CLUB

This year for those who feel unable to attend the Sportsmans Dinners in the evenings, they will have the opportunity to 'socialise' with clients or colleagues over a lunch which also has a celebrity speaker. The ideal way to mix business and pleasure, combining the highest quality cuisine, celebrity speaker and an afternoons entertainment.

### PROMOTE YOUR COMPANY

This is a unique concept to Rugby League and one we feel will be very successful. The idea comes from America and it is quite simple.

At each home game a company 'Gives' away merchandise (agreed between ourselves) this could be:

Umbrellas • Baseball Caps • Pens • Radios (Quantities to be agreed)

The list is endless

Each gift will have the name of your company on and also something connecting it with Oldham R.L.F.C.

These items and games are advertised in advance and this will encourage children, adults and families to attend in the hope of getting a 'gift'.

The choice of gifts are endless these can range from pin badges or T-shirts to shaving kits or umbrellas.

### TICKETS

During the season we accept that every game is not going to be a 'sell out'. So we have decided to sell these tickets to companies at greatly reduced prices. The tickets are only for standing areas and cannot be exchanged for seats.

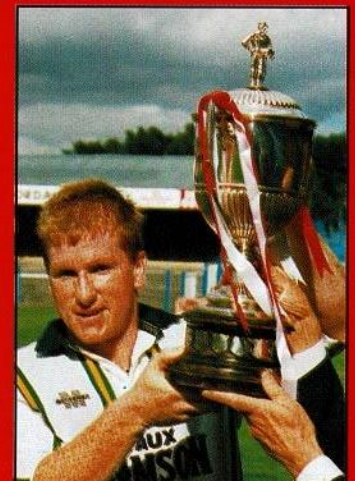
The regular ticket prices are – Adult £6.00 – Child/OAP £3.00

These tickets can be used as prizes, or simply public relation exercises.

The tickets will be available for the following games:

Doncaster • Workington T. • Wakefield T. • Sheffield E. • Hull

The tickets are available in 100's



Martin Crompton  
Receives the Law Cup

### 1994/95 HOSPITALITY PRICE LIST

Type of Package	Match	Executive	Man of the Match	Match ball		
Number of Guests		20*1	10*2	4*3	4*3	
Date	Versus	K. Off				
21/8	Halifax	3.00pm	£1,400	£750	£275	£275
4/9	Wigan	3.00pm	£2,000	£1,000	£350	£350
18/9	Doncaster	3.00pm	£1,100	£650	£275	£275
2/10	St. Helens	3.00pm	£1,500	£800	£300	£300
14/10	Widnes	7.30pm	£1,400	£750	£275	£275
30/10	Featherstone	3.00pm	£1,250	£700	£275	£275
22/11	Bradford	7.30pm	£1,500	£800	£300	£300
11/12	Warrington	3.00pm	£1,400	£750	£300	£300
<b>1995</b>						
1/1	Workington	3.00pm	£1,100	£650	£275	£275
8/1	Leeds	3.00pm	£1,400	£750	£275	£275
22/1	Sheffield E	3.00pm	£1,250	£700	£275	£275
5/2	Hull	3.00pm	£1,250	£700	£275	£275
5/3	Wakefield T	3.00pm	£1,250	£700	£275	£275
26/3	Castleford	3.00pm	£1,500	£800	£300	£300
14/4	Salford	7.30pm	£1,250	£700	£275	£275

Prices Exclude VAT

Cost per head for extra guests – \*1 £60 – \*2 £60 – \*3 £50

"THE WILL TO WIN IS NOT NEARLY AS IMPORTANT AS THE WILL TO PREPARE TO WIN"  
- Bobby Knight

# THE GROWING GAME

Development News Supported by P.Casey and Co and Sportsmatch

## RUGBY RECALL QUIZ

1. Which player last season scored 40 tries for Castleford, and from which second division club was he signed?
2. Which ex-Oldham player scored for Castleford in both the home and away games last season?
3. Who was Castleford's leading try scorer in season 1986/87?
4. Which two Australian players did Oldham recruit in June 1986?
5. Who did Castleford beat in the Yorkshire Cup final in 1986?
6. Which Oldham hooker was transfer listed at £25,000 in November 1986?
7. Which Castleford player was voted Gt Britain's man of the series during Australia's tour of Britain in 1986/87?
8. Which former Gt Britain international was given a free transfer by Oldham in May 1987?
9. Which Castleford player was the only player to have appeared in all 43 first team games last season?
10. Which player still connected with the first team scored for Castleford in both the home and away games against Oldham in 1986/87?

Answers on Page 28  
THE WELSH CONNECTION (TM)  
Copyright. Kelvin Jones 1995



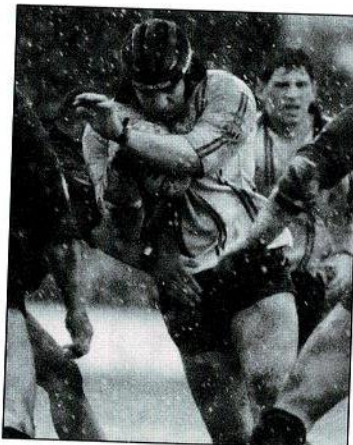
PRO-ENVIRONMENT

The Casey Group  
of Companies  
PO Box 54, Rydings Road  
Wardle, Rochale  
Lancashire OL12 9PS  
  
Tel: (0706) 341121  
Fax: (0706) 861156

Welcome to tonight's re-arranged game against Castleford. I'm sure we've either all got Wembley fever or we'll be desperate for top 8 points. Whichever I hope last Saturday's semi-final achieved the right result for Oldham. The last home game against Huddersfield was very frustrating as I arranged a curtain raiser then cancelled it on the Friday because of the weather forecast. It then turned out to be the most perfect day, sun and a big crowd and no kids game. Tonight's curtain raiser is a victim again of circumstances and re-arrangement, but I hope you are watching Richmond, Alt, Greenfield and Stoneleigh Junior Schools. I also hope that tonight's crowd is boosted by some members of Oldham College. Last week we had a promotion event at the college and arranged a special entrance for students. The Quantum Oldham Schools Cup is progressing through towards the semi-final stage at all levels now. The finals will take place here at Watersheddings on May 2nd and May 4th. On a personal note, I was lucky

enough to go to Washington DC last week, with the Ireland Squad who played against the USA. The game was given the full American treatment with TV time outs, unlimited substitution, razz ma tazz, popcorn and beer. Eighty degree heat and a fantastic RFK stadium all helped. To make for a great event. It confirmed in my mind that Rugby League is a summer sport and also that the USA are coming and coming fast, watch out!

Below: Chris Parr running blind.



ERF MANCHESTER LTD ERF TRUCKS DISTRIBUTOR

Trafford Park Road, Trafford Park, Manchester M17 1NJ. Tel: 061 848 8331 Fax: 061 872 8334



Supporting Oldham Town Team Under 13's



SPORTS



BUSINESS BACKING SPORT

NEW CLUBCALL NUMBER: 0891 122 722

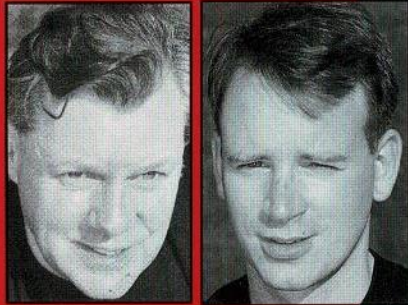


NO GUTS  
NO GLORY

"IT IS ONLY EIGHTEEN INCHES BETWEEN A FAT ON THE BACK AND A KICK IN THE PANTS." - Joseph Crossman

# INJURY UPDATE

## FROM THE TREATMENT ROOM



with **John Watkins and Nick Hodgeson**  
It was good to see Nigel Heslop

come through the Ryedale York game a week last Thursday after struggling with a recurrent hamstring problem. Let's hope that he has an injury free season from now on. At the time of writing Alfie Gouldbourne is back in training after his lengthy lay off with a groin strain. Young Jimmy Cowans who had a promising try scoring debut in the Alliance team game against

Ryedale York, picked up a knock on his right knee in the Academy game against Batley last Monday but he is responding well to treatment and should be fit soon. Due to freak accidents Paddy Mitchell and Dave Bradbury have been sidelined, Paddy looking as though his season may be over due to ankle ligament damage, but there is much better news of Dave Bradbury who should now be back in action after a self imposed toe injury.

## A VISIT TO THE ZOO

All answers are Rugby League orientated, either past or present names. No name can be used twice (unless of course there are 2 teams with the same name!)

Last summer we decided to go on a visit to \_\_\_\_\_ Zoo. We needed to be \_\_\_\_\_ as the zoo was in a \_\_\_\_\_. Because we didn't know exactly where it was, we sent a \_\_\_\_\_ asking for directions. They told us that it was just outside the \_\_\_\_\_ through a \_\_\_\_\_ which \_\_\_\_\_ to the zoo. We were worried about being attacked

by \_\_\_\_\_ who were no \_\_\_\_\_ and we felt we needed some \_\_\_\_\_ to protect us. We passed some \_\_\_\_\_ which made us feel hungry so we had our sandwiches made with \_\_\_\_\_ but they weren't very good. As we travelled through the countryside the \_\_\_\_\_ all waved to us, and some \_\_\_\_\_ played cricket on the green. When we arrived we thought we were in Paris because of the wide \_\_\_\_\_ but it was only the \_\_\_\_\_. The coach parked in a \_\_\_\_\_ where a car boot sale was taking place. The first thing we saw were the \_\_\_\_\_ and \_\_\_\_\_ in the cat house and in the aquarium were some \_\_\_\_\_. The aviary had some \_\_\_\_\_ and \_\_\_\_\_ but the day was spoiled when mum was stung by a \_\_\_\_\_. So we

came home early as dad was \_\_\_\_\_ ight.

Brenda Rogers  
A free Oldham T shirt for the most correct answers send to Ray Hill ORLFC  
Answers printed next programme.

**ACACIA**  
JOINERS & BUILDERS  
Specialists in U.P.V.C., Hardwood, Softwood, Windows, Doors, Conservatories, Porches, Stairs.  
FOR THE BEST DEAL IN TOWN  
FITTED BY A FIRST DIVISION TEAM CONTACT  
IAN SHERRATT OR SHANE TUPAEA  
Tel: 061 678 7026/652 2348  
Mobile: 0585 644571

## TRAVELLING AWAY WITH THE ROUGHYEDS

LEEDS AWAY 4th APRIL 1995 • KICK OFF 7.30pm

Miles	Stage	From East	8.9	2.7	LEEDS R.L. GROUND (on right)
Total		M62 Junction 29 (M1) Follow signs Leeds M1			From West M62 Junction 27 (A62/A650/M621) Follow signs Leeds M621
2.5	2.5	Junction 43 (A61)	3.3	3.3	Junction 1 (A6110)
4.9	2.4	Junction 47	4.0	0.7	Junction 2 (A643)
6.2	1.3	Leave Motorway and follow signs City Centre LEEDS			Leave Motorway and at roundabout take 1st exit A643 in 0.8 mile at roundabout take 3rd exit A58 In 0.3 mile branch left and at roundabout take 1st exit into Kirkstall Road A65 (signposted Ilkley) 0.5 mile farther at traffic signals turn right into Willow Road unclassified
		Follow signs Otley, Skipton A660 to leave by Woodhouse Lane. In 2.3 miles turn left then left again into St. Michael's Lane for	7.1	3.1	At next crossroads forward into Cardigan Road In 1 mile turn left into St. Michael's Lane for LEEDS R.L. GROUND

NEW CLUBCALL NUMBER: 0891 122 722

No 34000 THE GREAT RUGBY LEAGUE GOLDEN GAMBLE

**THE GREAT RUGBY LEAGUE GOLDEN GAMBLE**

WIN UP TO **£2000**

50% of proceeds up to a maximum of £2000 paid to the winner  
50% of proceeds go directly to help your club

**GUARANTEED WINNER EVERY GAME**

Ticket £1.00

**BUY YOUR GOLDEN GAMBLE TICKET NOW!!!**

**It could be a WINNER**

LEAGUE

# League WEEKEND

# LEAGUE Express

# DELTA CARS

HILL STORES  
156 HUDDERSFEILD ROAD  
OLDHAM

**061 627 2277**

"A GREAT ACTOR CAN BRING TEARS TO YOUR EYES, BUT THEN SO CAN A MECHANIC"  
- Donald Reber

# DUNCANS OF OLDHAM

## OLDHAMS ONLY MAIN DEALER

FOR

# VOLVO

061-624 2404



061-628 6200

# HYUNDAI

061-624 2404

**FIRST FOR SALES • SERVICE & PARTS**



**ALWAYS A HUGE SELECTION OF  
TOP CLASS NEW,  
USED & DEMONSTRATORS  
AVAILABLE**

*Pictured Left: Terry Hall General  
Manager of Oldham Nissan  
presenting Ray Hill with the keys of  
his new sponsored Nissan Sunny*

## ALL ON ONE SITE

ROCHDALE ROAD • OLDHAM • OL1 1NU • OPPOSITE CIVIC CENTRE

# FROM SMALL 'A' CORNS GROW

A look at our Alliance team

Five matches to go and we need to win three. Talk about a "breathless hush in the close tonight". Certainly the end of season has become quite hectic as we chase the Division 1 Championship with St. Helens breathing down our necks. As you can see from the league table, we are still 7 points clear but Saints have a match in hand. Our home match against them, still to be arranged, could be a Championship decider although we both have other tough matches to play. This will be our last home fixture and should be a cracker. Keep your eyes on the fixture news, the lads really appreciate your vociferous support. Meanwhile as I write these notes we are preparing for our game against Castleford at Wheldon Road on Thursday evening. Back in January we put 50 points past Cas. but they are a

different proposition on their own ground and we may have our work cut out to claim those vital 2 points. However, the lads have trained really well this week, and are quietly confident. On the injury front Damien Ainge is still out with a collar bone fracture and Martin Holden has not fully recovered from his knee injury, but Nigel Heslop is back to full fitness, David Bradbury is raring to go and Alfie Gouldborne should be fully fit for the next match. Congratulations to Jimmy Cowan who made his Alliance Squad debut in our win against Ryedale York, scoring a try and generally having a good game. He looks one for the future.

**Dennis McHugh  
(Alliance Coach)**

		FIRST DIVISION						
	P	W	D	L	For	Agst	Diff	Pts
Oldham	21	17	0	4	643	395	248	34
St Helens	20	13	1	6	639	423	216	27
Wigan	20	12	0	8	651	434	217	24
Warrington	21	13	0	8	633	397	236	26
Leeds	20	13	0	7	475	355	120	26
Bradford	20	12	0	8	535	416	119	24
Dewsbury	19	11	0	8	423	417	6	22
Salford	23	9	0	14	543	503	40	18
Castleford	20	9	0	11	404	463	-59	18
Hull	23	9	0	14	443	609	-166	18
Halifax	19	8	0	11	341	493	-152	16
Featherstone	22	7	0	15	441	705	-264	14
Ryedale-York	21	4	0	17	354	830	-476	8

### ALLIANCE FIRST DIVISION

DATE	OPPONENT	VENUE	K.O.	RES
August				
19th	Halifax	A	7.30	W36-12
26th	Bradford N	H	7.30	W32-26
September				
1st	Blank weekend			
2nd	Wigan	A	7.30	W26-21
10th	Warrington	H	7.30	L10-32
16th	Dewsbury	H	7.30	W20-12
24th	St. Helens LCC Shield RD1		7.30	W46-22
30th	St. Helens	A	7.30	W42-38
October				
8th	Thatto Heath LCC Shield RD2			W61-12
14th	Ryedale Y	A	7.30	W46-29
27th	Widnes LCC Shield Semi			W30-10
28th	Featherstone R	A	7.30	L22-37
29th	YSC Cup & LCC Shield - Semi Finals			
November				
4th	Halifax	H	7.30	W25-10
10th	Dewsbury	A	7.30	
12th	Wigan LCC Shield Final			L10-24
18th	Wakefield T	H	7.30	W28-8
25th	Wigan	H	7.30	W36-6
30th	Leeds	A	7.30	L18-31
December				
9th	Warrington	A	7.30	
16th	Salford	H	7.30	W44-14
24th	Blank weekend			
30th	Hull	A	8.00	W33-16
January				
9th	Wigan (All. C.C. R1)	A	7.30	W31-8
13th	Castleford (T.B.A)			W50-4
20th	Featherstone R	H	7.30	W42-12
February				
1st	Bradford N	A	7.30	
6th	Halifax (All. C.C. R2)	A		W28-22
10th	Salford	A	8.00	
17th	St. Helens	H	7.30	
18th	Warrington (All Ch. Cup - R3)			L25-38
24th	Hull	H	8.00	W30-14
March				
2nd	Wakefield T	A	7.30	W36-14
10th	Leeds	H	7.30	L11-31
11th	Alliance Challenge Cup - Semi Finals			
17th	Ryedale Y	H	7.30	W44-17
23rd	Castleford	A	7.30	

## NEIL GIBBISON

**B.D.S., V.U. Manc.**

**Dental Surgeon**

**36 Oldham Road Uppermill Oldham OL3 6HV Telephone: 0457 872108**

## RUFF E. HEAD THE MAN IN THE KNOW

“ As is the case in many walks of life, you only realise the value of genuine first division-quality grafters when they are missing. I make no apology then in returning to Shaun Irwin, who must have been particularly sick about missing Saturday's semi-final, since injury had also caused him to miss the Cas v Wigan final 3 years ago. He was recently quoted as being delighted to have come to Oldham, and given a chance to play in the centre after efforts to turn him into a second-rower at Wheldon Road. But there is no doubt that our back-line looks much less solid without him.

On similar lines, Jason Temu's presence was sorely missed last week at Widnes. His hard yards, and quick play-the-balls, give so much to the acting half-back and first receiver, and their absence was extremely conspicuous, I thought. Of course, the capitulation in the last few minutes was very depressing - but in the conditions and the circumstances,

probably understandable. What I found more disappointing was our failure to make the most of the conditions when they were in our favour in the first half. Two other thoughts on the game: what a class act Hammond looked; and what damage to the entertainment on offer a whistle-happy referee can do. My personal highlight of the afternoon was the walk out of the ground after the match, when, to a man, the Widnes fans were even keener for us to make Wembley than we were! They are not too keen on the pie-eaters around Naughton Park.

What a P.R. nightmare has been the Doncaster fiasco. They were going to merge with Sheffield Eagles, to form a powerhouse of South Yorkshire Rugby League - or maybe they won't. Their players are free agents - or maybe they aren't. They are going to keep playing at Tattersfield - or perhaps not. If they fold, it will be one down, two up - or maybe it won't. They will fold if no new buyer

comes forward within 24 hours - or maybe they won't. Of course, the prime responsibility for the whole business lies with the murky figures who have been supposedly running the Doncaster club. But the lack of clear direction from Chapelton Road has been frightening. Taken on top of the deafening silence from Mr Lindsay after his Offiah outburst from Sidney, and the Harry Gratton disappearance, I rather think our revered leader might be glad to see the back of the 1994-95 season. How must Mr Ollerton feel! I hope he doesn't watch Sky on Friday nights. Public humiliation and demotion was his reward for allowing a try which wasn't, at Salford. An exactly similar error by Mr Cummings, however, seems to lead to nothing other than a call for in-goal touch judges. Who said consistency was the crucial watch-word?

Ruff E. Head ”

## REFLECTIONS

There are thousands of Rugby League supporters who do not know how the game of Rugby League came about, but they are probably aware that this year, on August 29th, it is the centenary of Rugby League, but a lot of water has flown into the sea since that momentous day. Rugby Union flourished all over the country in those days, the English R.U. being formed in 1871, with their headquarters in London, the handling game was popular, there were over 400 clubs. However, in the industrial towns of Northern England, where wages were poor, players could not afford time off work to play rugby and they began to agitate for "broken time" payments, but when the suggestion was put to the R.U. officials in London, they nearly had a fit, and held up their hands in horror, they said this would open the door to professionalism. At the annual meeting of the R.U. in London on Sept. 20th 1881, there were 418 club representatives present, and 2 Yorkshire club reps, had the audacity to propose that players should be compensated for bona-fide loss of wages, this was heavily defeated, but the proposers were encouraged by 136 in favour. Back on their own 'midden' in the North of England they continued to press for this, they

had frequent meetings to discuss it and a special meeting was called for, to be held at the George Hotel, Huddersfield on August 29th 1895. 21 club reps. attended the meeting, at the end of which a vote was taken to a proposal "That we resign from the Rugby Football Union and form a Northern Rugby Union, and that players could be paid legitimate expenses for loss of earnings", this was carried by 20 votes to 1 against, the odd club out was Dewsbury. The break with R.U. was made, never to be healed, although there has been one or two break throughs in recent years, for instance, the R.U. will allow amateur R.L. players, under 18, to also play with a R.U. club, and only in this last few weeks, the Welsh R.U. have stated that they will allow former professional R.L. players, who have retired from the game more than 3 years ago, can now join a R.U. club, is that progress??? It is not long ago the rule was that if a known R.L. scout, or known player was spotted on a R.U. ground, he was promptly escorted off. The new Northern R.U. wasted no time in organising fixtures, and 2 more clubs had joined them, Runcorn and Stockport, and the first fixtures were played on Sept. 7th 1895. A sub-committee was formed to draw up rules and

regulations, it was decided to have 2 Senior Competitions, one in Lancashire, one in Yorkshire, the players were happy because they were allowed to claim up to 6 shillings a day for 'broken time' (30p present day money), not a lot, but remember, wages were only about £2 per week average. Some of the first fixtures were: Huddersfield v Batley, Wakefield v Brighouse, Hunslet v Liversedge, Runcorn v Manningham, Stockport v St. Helens, Halifax v Oldham, Wigan v Tyldesly, Leeds v Hull, some of the above have fallen by the wayside, some are still going strong. Meanwhile, the R.U. in London forbid their member clubs to have any contact with the breakaway clubs. At that time, of course, all clubs were playing to the same rules, it was some time later that the Northern Union clubs changed their rules, reduced teams to 13 players, and eventually adopted the name of "The Rugby Football League", but more about that later. After a first successful season Runcorn were the winners of Lancs Senior Comp. and Manningham won the Yorks one. When the successful teams returned to their towns with the trophies, there were wildly enthusiastic crowds to greet them, in Runcorn a torchlight procession led a triumphant tour, with the team in horse drawn coaches, Manningham paraded the streets of Bradford in horse drawn carriages, a fitting end to a successful first year. *To be continued...*

George Lunn



# TRY AGAIN!

VAUX SAMSON - ITS STRENGTH IS ITS TASTE

# STATISTICALLY SPEAKING 1994-95



## NEWS ON FORMER PLAYERS

Tony Morrison signed for Oldham in the 1980's but had limited opportunities of first team rugby. He signed for Swinton in 1991 and started to play in the first team. Very strong and Aggressive, Tony moved to Castleford where he soon became one of the Cas favourites. Tony is now playing some of his best rugby. Keep it up.

## ANSWERS TO QUIZ FROM PAGE 20

1. St. John Ellis, York
2. Richard Russell
3. David Plange
4. Bruce Clarke and Gary Bridge
5. Hull (31-24)
6. Ian Sanderson
7. Kevin Ward
8. David Topliss
9. Mike Ford
10. John Joyner

NEW CLUBCALL NUMBER: 0891 122 722

DATE	OPPONENT	K.O	Res	1	2	3	4	5	6	7	8	9	10	11	12	13	14	15
AUGUST																		
21st	<b>Halifax</b>	3.00	L 20-40	Gibson	Jones	Irwin	Abram T	Ranson	Gartland G6	Crompton	Sherratt	Clarke	Parr	Lord	Davidson	Kuiti	Richards T	Heslop
28th	Bradford Northern	3.00	L 14-36	Gibson T	Jones	Irwin	Abram	Ranson	Gartland G1	Crompton	Sherratt	Clarke	Parr	Lord	Davidson	Kuiti	Richards T2	Heslop
SEPTEMBER																		
4th	<b>Wigan</b>	3.00	L 58-10	Gibson T	Jones	Irwin T	Abram	Ranson T	Gartland G1	Crompton T	Sherratt	Clarke	Richards	Lord	Davidson	Kuiti	Parr	Topping
SEPTEMBER																		
11th	Warrington	3.00	L 55-6	Heslop	Jones	Irwin	Abram	Ranson	Gartland G1	Crompton T	Sherratt	Clarke	Parr	Lord	Davidson	Kuiti	Richards	Faimalo
18th	<b>Doncaster</b>	3.00	W 44-8	Heslop T	Jones	Irwin T	Abram T	Ranson	Topping T 6g	Crompton 2T	Sherratt	Clarke	Parr	Lord T	Faimalo T	Kuiti	Richards	Gartland
25th	Hull	3.15	W 21-17	Heslop	Jones T	Irwin	Abram 2T	Ranson	Topping 4g	Crompton 1dg	Sherratt	Clarke	Faimalo	Lord	Green	Kuiti	Gartland	Davidson
OCTOBER																		
2nd	<b>St. Helens</b>	3.00	D 18-18	Heslop	Jones T	Irwin	Abram	Ranson	Topping 5g	Crompton	Sherratt	Clarke	Parr	Lord T	Faimalo	Kuiti	Gibson	Temu
9th	Wakefield Trinity	3.30	L 16-21	Heslop	Jones	Irwin	Abram	Ranson	Topping 3g	Crompton T	Sherratt	Clarke	Temu	Lord	Faimalo	Kuiti 2T	Davidson	Gibson
14th	<b>Widnes (BSKYB)</b>	7.30	W 29-0	Gibson	Jones	Irwin T	Abram T	Ranson T	Topping 4g	Crompton T Dg	Sherratt	Clarke	Parr	Lord T	Faimalo	Kuiti	Heslop	Temu
30th	<b>Featherstone Rovers</b>	3.00	L 10-20	Gibson	Jones	Irwin	Abrams T	Ranson	Topping 3g	Crompton	Sherratt	Clarke	Temu	Faimalo	Lord	Kuiti	Heslop	Parr
NOVEMBER																		
6th	Halifax	3.00	L 34-8	Gibson	Heslop	Irwin	Abram T	Ranson	Topping	Crompton	Sherratt	Clarke	Temu T	Lord	Faimalo	Kuiti	Jones	Norman
22nd	<b>Bradford Northern</b>	7.30	W 32-12	Gibson 2T	Jones	Irwin	Abram 2T	Ranson	Topping 3g	Crompton 2dg	Sherratt	Clarke T	Temu	Lord T	Faimalo	Kuiti	Green	Bradbury
27th	Wigan	3.00	L 46-0	Gibson	Jones	Irwin	Abram	Ranson	Topping	Crompton	Sherratt	Clarke	Temu	Lord	Faimalo	Kuiti	Green	Bradbury
DECEMBER																		
4th	Hull K.R. (RT Rd2)	3.00	W 28-0	Gibson	Jones T	Irwin T	Abram CT	Ranson CT	Topping 4g	Crompton	Sherratt	Stephenson	Temu	Lord	Faimalo T	Kuiti	Green	Bradbury
11th	<b>Warrington</b>	3.00	W 52-22	Gibson	Jones	Irwin	Abram T	Ranson T	Topping 2T 8g	Crompton T	Sherratt	Stephenson	Temu	Lord	Faimalo	Kuiti T	Marsh T	Green 2T
18th	Widnes (RT Rd3)	3.00	L 6-20	Gibson	Jones	Irwin T	Abram	Ranson	Topping g	Crompton	Sherratt	Clarke	Temu	Faimalo	Lord	Kuiti	Marsh	Green
26th	Salford	3.00	W 16-12	Gibson	Belle T	Irwin	Abram	Ranson	Topping 4g	Crompton T	Sherratt	Clarke	Temu	Lord	Faimalo	Kuiti	Marsh	Davidson
JANUARY																		
1st	<b>Workington Town</b>	3.00	W 20-10	Gibson	Belle	Irwin	Abram	Ranson 3T	Topping 2g	Crompton	Sherratt	Clarke	Temu	Lord	Faimalo	Kuiti 1T	Gartland	Davidson
8th	<b>Leeds</b>	3.00	L 14-21	Gibson	Belle	Irwin 1T	Abram	Ranson	Topping 1T 3g	Crompton	Sherratt	Clarke	Temu	Lord	Faimalo	Kuiti	Marsh	Parr
22nd	<b>Sheffield Eagles</b>	3.00	L 12-14	Gibson	Belle	Irwin	Abram	Ranson 1T	Topping 2g	Crompton T	Sherratt	Clarke	Temu	Lord	Faimalo	Kuiti	Bradbury	Green
FEBRUARY																		
5th	<b>Hull</b>	3.00	W 19-14	Gibson	Belle	Topping G	Abram T	Ranson	Marsh 4g 1dg	Crompton T	Sherratt	Stephenson	Temu	Lord	Faimalo	Kuiti	Irwin	Green
11th	Bramley (S.C.C.C. Rd 4)	3.00	W 20-10	Gibson 2T	Belle T	Topping T	Abram 2T	Ranson 2T	Marsh 1T 1g	Gartland 2T	Norman	Stephenson	Temu	Green	Faimalo	Kuiti	Irwin	Davidson 1T
15th	Doncaster	7.30	W 22-14	Gibson T	Jones	Kuiti T	Abram	Belle	Marsh 7g	Gartland	Sherratt	Stephenson	Temu	Faimalo	Davidson	Green	Lord	Norman
19th	St. Helens	3.00	L 22-32	Gibson	Belle	Topping	Abram	Ranson 2T	Marsh 3g	Gartland T	Norman	Stephenson	Temu	Lord	Faimalo	Kuiti	Crompton	Davidson
25th	Warrington (S.C.C.C. Rd 5)	3.00	W 17-6	Gibson	Belle	Topping	Gartland DG	Ranson T	Marsh 4g	Crompton	Norman	Stephenson	Temu	Lord	Faimalo T	Kuiti	Green	Davidson
MARCH																		
5th	<b>Wakefield Trinity</b>	3.00	L 10-12	Gibson	Belle	Topping	Gartland	Ranson T	Marsh 3g	Crompton	Norman	Stephenson	Temu	Lord	Faimalo	Kuiti	Hill	Davidson
12th	<b>Huddersfield (Silk Cut Rd 6)</b>	3.00	W 23-12	Gibson (DG)	Belle	Topping (T)	Abram	Ranson	Marsh 5g	Crompton 2T	Sherratt	Stephenson	Temu	Lord	Faimalo	Kuiti	Gartland	Davidson
APRIL																		
15th	Castleford	3.00	L 14-35	Gibson (T)	Belle	Topping	Abram	Ranson	Marsh T 3g	Crompton	Sherratt	Stephenson	Temu	Lord	Faimalo	Kuiti	Neal	Davidson
19th	Widnes	3.00	L 4-40	Gibson	Belle	Topping	Abram	Ranson	Marsh 2g	Crompton	Sherratt	Stephenson	Parr	Lord	Faimalo	Kuiti	Neal	Davidson

HOME FIXTURES ARE DENOTED IN BOLD CAPITAL LETTERS

## CLASSIQUE JEWELLERS PLAYER OF THE MONTH MERIT AWARD

### OLDHAM V HUDDERSFIELD

CROMPTON	5
KUITI	3
STEPHENSON	1

## CLASSIQUE JEWELLERS PLAYER OF THE MONTH MERIT AWARD

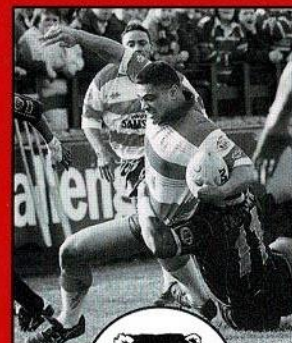
### CASTLEFORD V OLDHAM

FAIMALO	5
CROMPTON	3
KUITI	1

## CLASSIQUE JEWELLERS PLAYER OF THE MONTH MERIT AWARD

### WIDNES V OLDHAM

CROMPTON	5
TOPPING	3
FAIMALO	1



## FEBRUARY'S PLAYER OF THE MONTH JOE FAIMALO

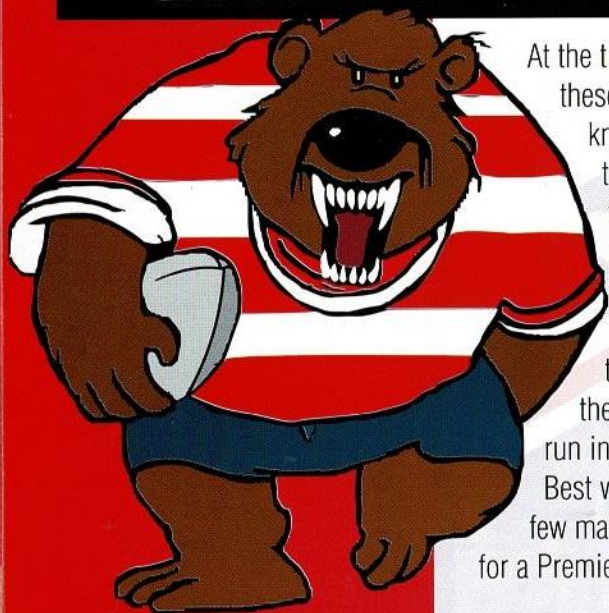
## CLASSIQUE JEWELLERS PLAYER OF THE YEAR AWARD

### Present Positions

KUITI	50
CROMPTON	41
SHERRATT	26
FAIMALO	26

# JUNIOR ROUGHYEDS

## CALLING ALL JUNIOR ROUGHYEDS



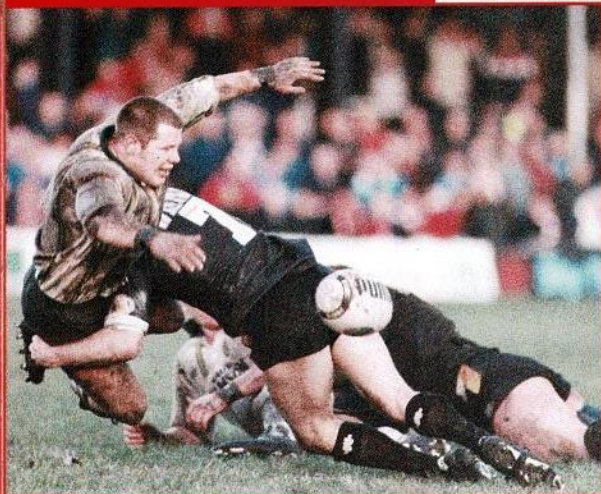
At the time of writing these notes we do not know who will be through to the final of the Challenge Cup at Wembley. Thanks anyway to Andy, Alan and the team for a great run in the Cup. Best wishes for our last few matches, let's hope for a Premiership place.

### SUPPORTERS CLUB

Apologies to Kevin Kershaw as we failed to mention him in our thank you list for donated raffle prizes at the Valentine Dinner. Sorry Kevin, and thank you. Bookings for any away coaches be made on 665 1832 or at Canteens at "A" team matches.

## ACADEMY UPDATE

### KNOCKED OUT OF THE CHALLENGE CUP



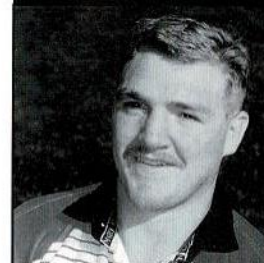
**JOHN CLARKE...** currently playing in the 'A' team, a great pro

Our Academy side was knocked out of the Challenge Cup by first division side Castleford but not without a fight. They caught us cold and registered three quick tries but once we had got our act together we battled back and played some good football before going down by 34 points to 14, our

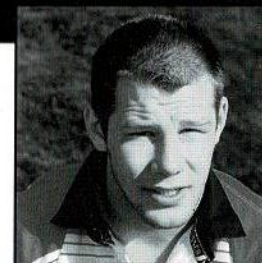
points being scored by second row forward Lee Wilde try, hooker Richard Mort try, and three goals by stand off Richard Badby. We got back to winning ways in our league match on Monday night by a resounding 56 points to 2 against Batley, our back three forwards Mike Prescott, Lee Wilde and Billy Tindall being far too strong to handle by the visitors, also impressive was Jimmy Cowans in the centre and half backs Wayne Riding and Richard Badby.

NEW CLUBCALL NUMBER 0891 - 122 772

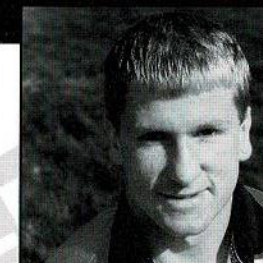
# PLAYER SPONSORSHIP



**IAN SHERRATT**  
Bill & Brenda Rogers



**JOHN CLARKE**  
Arc Electrical



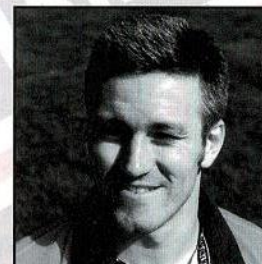
**MARTIN CROMPTON**  
Charleswood Bedrooms



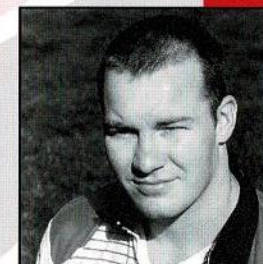
**WALLY GIBSON**  
Specsavers



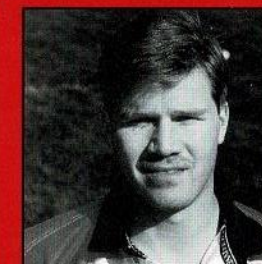
**SHAUN IRWIN**  
Shaun & Pat Whelan



**NIGEL HESLOP**  
Alex Hammond



**CHRIS PARR**  
Irene & Helen Calow



**DARREN ABRAM**  
COCKFIELD FARM

## WE'VE CURED HEADACHES FOR THE ROUGHYEDS



Manufacturers of upholstery fillings for over a century, Platt & Hill make foam and fibre fillings of the highest quality right here in Oldham.

So reliable are our products, that Oldham RLFC have selected them to cushion the uprights of their goal posts.

In a way, you see, we've prevented headaches all round!

**PLATT & HILL**  
FOAM AND FIBRE FILLINGS

FIBRE FILLINGS DIVISION:  
Belgrave Mill, Keswick Avenue,  
Oldham, Lancs OL8 2LZ.  
Tel: 061-626 4638 Telex: 669550.  
Fax: 061-627 3265.

NEW CLUBCALL NUMBER 0891 122 772