

# TODAYS LINE UP

# OLDHAM



NO GUTS NO GLORY

**W** Welcome  
Sponsored by

Financial Services Limited, Owl House, 2nd Floor, 59 Great Underbank, Stockport, Cheshire SK1 1NE

## ROUGHYEDS

- 1 **Wally Gibson**
- 2 **Adrian Belle**
- 3 **Paul Topping**
- 4 **Mike Neal**
- 5 **David Jones**
- 6 **Steve Gartland**
- 7 **Martin Crompton**
- 8 **Chris Parr**
- 9 **John Clarke**
- 10 **Jason Temu**
- 11 **Gary Lord**
- 12 **Joe Fiamalo**
- 13 **Dave Bradbury**

- 14 **Darren Abram**
- 15 **Mike Kuiti**

Colours: Red & White

Referee:

Touch Judges:

Big Match Sponsor:  
**Reddish Demolition**

Match Sponsors:  
**H&A Haulage,  
Charterplan**

Associate Match Sponsor:  
**William Chadwick  
Builders**

Man of the Match Sponsor:  
**Greenash Hotel**

Mitre Matchball Sponsor:  
**Midas Lotteries**

## SALFORD

- 1 Rob Myler
- 2 Tex Evans
- 3 Scott Naylor
- 4 Scott Martin
- 5 Phil Ford
- 6 Steve Blakeley
- 7 Mark Lee
- 8 David Young
- 9 Jonathan Quigley
- 10 Paul Southern
- 11 Paul Forber
- 12 Cliff Eccles
- 13 Sam Panapa

- 14 Craig Randall
- 15 Mike Gregory

Colours: Black & Gold

R. Connolly

F.J. Hawley

J.N. Fallon

OFFICIAL CLUB SPONSOR

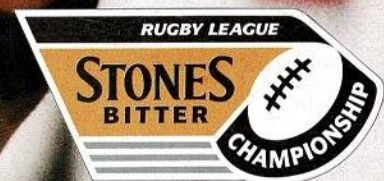
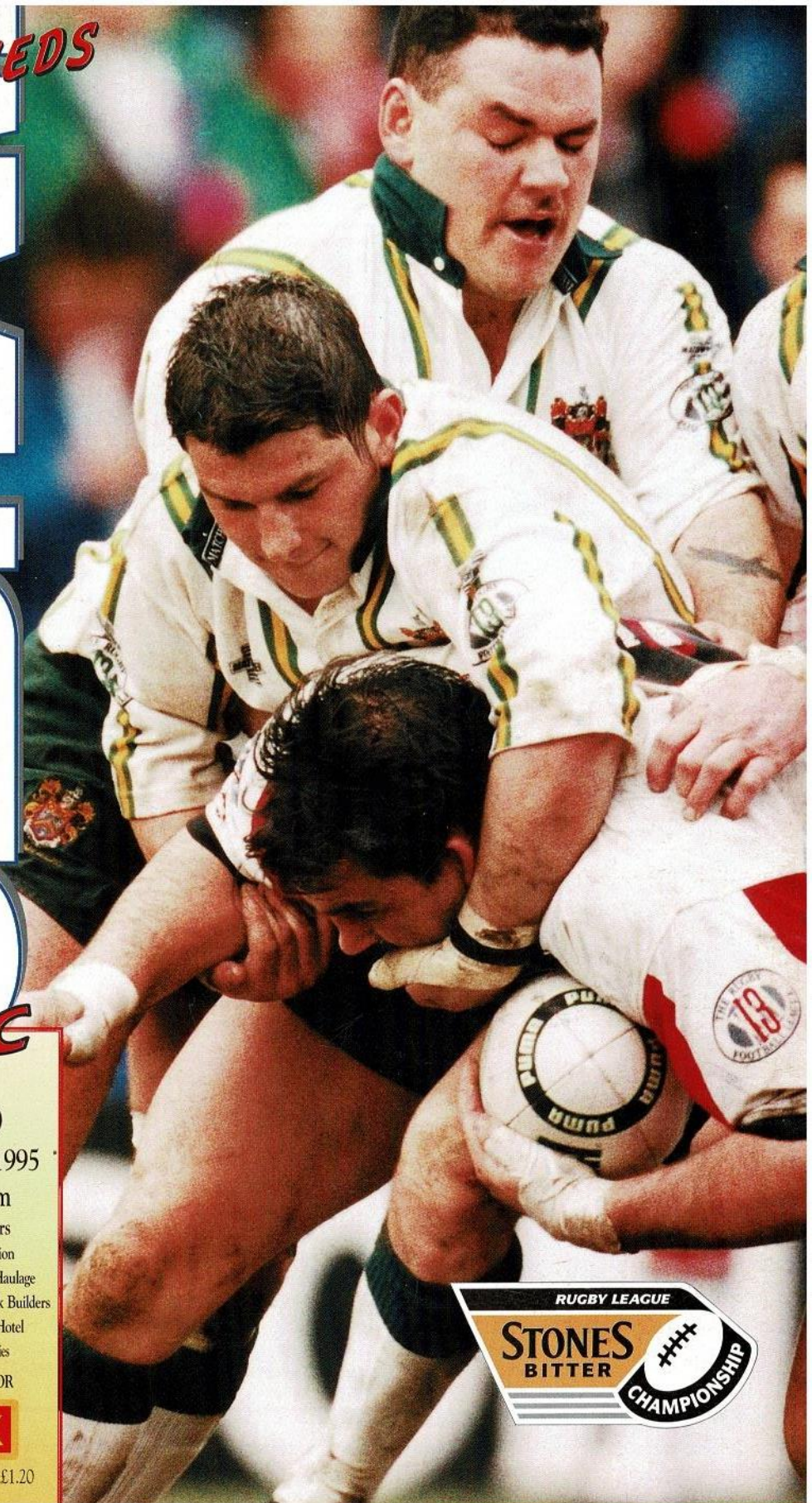


**ROUGHYEDS**



**RLFC**  
versus  
**SALFORD**  
Friday April 14th 1995  
Kick Off 3.00pm  
Today's Match Sponsors  
Big Match: Reddish Demolition  
Match: Charterplan and H&A Haulage  
Associate Match: William Chadwick Builders  
Man of the Match: Greenash Hotel  
Mitre Matchball: Midas Lotteries  
OFFICIAL CLUB SPONSOR  
**VAUX**

Official Matchday Magazine £1.20



# ROLL OF HONOUR

## OLDHAM RUGBY LEAGUE FOOTBALL CLUB

### CLUB HONOURS

Rugby League Championship  
Play-off Winners  
1909-10, 1910-11, 1956-57  
Runners Up  
1906-07, 1907-08, 1908-09,  
1921-22, 1954-55  
First Division Champions  
1904-05  
Second Division Champions  
1963-64, 1981-82, 1987-88  
Rugby League Challenge  
Cup Winners  
1898-99, 1924-25, 1926-27  
Runners Up  
1906-07, 1911-12, 1923-24,  
1925-26  
Lancashire Cup Winners  
1907-08, 1910-11, 1913-14,  
1919-20, 1924-25, 1933-34,  
1956-57, 1957-58, 1958-59  
Runners Up  
1908-09, 1911-12, 1918-19,  
1921-22, 1954-55, 1966-67,  
1968-69, 1986-87, 1989-90  
Lancashire Championship Winners  
1907-08, 1909-10, 1921-22,  
1956-57, 1957-58  
Runners Up  
1908-09, 1910-11, 1911-12,  
1919-20, 1923-34, 1954-55  
Lancashire Shield Winners  
1975-76, 1979-80  
Colts Premiership Trophy  
1979-80, 1989-90  
Second Division Premiership  
1987-88  
Wigan Sevens Winners  
1991-92

### CLUB RECORDS

Record Victory: 67-6 v Liverpool City  
April 1959  
Record Defeat: 11-67 by Hull K.R.  
September 1978  
Record Attendance: 28,000 v Huddersfield  
24th February 1912  
Record Receipts: £37,505.50 v Wigan  
5th October 1989  
Record Transfer:  
Fee Paid: £70,000 to Halifax for  
Tony Anderson  
March 1990  
Record Try:  
Scorer: Ref Farrar, 49 Tries,  
1921-22 season  
Record Goal:  
Scorer: Bernard Ganley,  
224 goals, 1957-58  
season  
Record Point:  
Scorer: Bernard Ganley,  
28 points v  
Liverpool City,  
April 1959  
First Game:  
21st October 1876  
v Stalybridge  
Bernard Ganley, 2,881  
Highest Number:  
of Points Scored  
Most Appearances: Joe Ferguson, 685  
Pre 1900 Jach Hirst 233  
Most Tries: Since 1900  
Alan Davies 182



The Pavilion, Watersheddings, Oldham  
Telephone: 061 652 5244 & 061 624 4865

Chairman: Jim Quinn  
Directors: John Chadwick, Roger Norris, Mike Winterbottom

General Manager: Terry Donovan  
Club Secretary: Karen Scott  
Commercial Manager: Ray Hill  
Hon Doctors: Dr. G. Radcliffe, Dr. D. Atherton  
Dental Surgeon: Mr. N. Gibbison  
Physiotherapists: Mr. N. Hodgson, Mr. A. Bonnelle (adviser)  
Assistant Physiotherapist: Mr. J. Watkins  
Coach: Andy Goodway  
Football Manager: Alan McCurrie  
Alliance Coach: Dennis McHugh  
Academy Manager: Brian Gartland  
Hon. Consultant Orthopaedic Surgeons:  
Mr. H. Thompson, Mr. D. Walker  
Official Timekeeper: Mr. J. Roscoe  
Hon. Safety Officer: Roger Norris

## MARIO'S PIZZERIA & TRATTORIA



*We like to feed a  
winning team for the  
best pizza's & pasta in  
town, call in and try us.*

*Just like Oldham Rugby*

*we are No. 1.*

125 Yorkshire Street, Oldham.  
Telephone: 061-624-6923

# FROM THE BOARDROOM

BY CHAIRMAN JIM QUINN

By an odd twist of fate we welcome Salford to Watersheddings today. Yes, Salford, the club with whom we are going to merge as part of the Rugby League's grand plan for the future of the game on a global platform.

As always, we welcome our visitors to Watersheddings and that welcome extends to chairman John Wilkinson and his board of directors, coach Andy Gregory and his coaching staff the players and the supporters.

There will be supporters of both clubs who were opposed to the merger, as outlined last weekend after the historic meeting of club chairmen at Wigan.

John Wilkinson and I, together with every other club chairmen, voted to accept the opportunity, presented by Rupert Murdoch's business empire, to push our game on to the world stage.

As John will readily agree, we had little alternative. Rugby League is going big with a capital B if Oldham and Salford were to be part of it, we had to accept the compromise of a merger.

Considering the options open to us, we voted "Yes". Significantly, every other club chairman voted the same way, not only at a meeting of first division chairmen on Friday evening but when first and second division chairman met at Wigan on the following morning.

At the time these notes had to go to press, John and I were still waiting to get together to discuss the implications of the merger. Everything happened quickly over the weekend.

Of course we are not alone in this. The four Cumbrian clubs are set to merge, along with Hull and Hull KR on Humberside and with Castleford, Featherstone and Wakefield in that

area of West Yorkshire and with Sheffield Eagles and Doncaster in South Yorkshire.

Understandably, many supporters have great reservations about what the future holds, but I hope they will see things in a different light when all the facts are available and open to discussion.

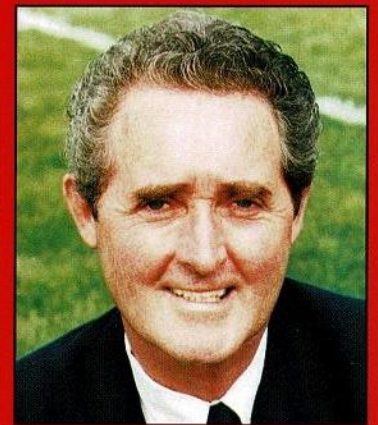
On Monday morning, I called a meeting of shareholders for Thursday evening. That was the first available day because I felt it was important to act quickly to allay their fears and worries.

Had Oldham voted not to take part in the Super League, which has the added benefit of something I have been advocating for the past four years, Summer Rugby, we would have tossed the opportunity to take part in a new concept that could turn our great game into a world wide spectator sport.

There are no guarantees but as a businessman and a Rugby League lover I see far more potential in that scene than in stepping back down to the feeder league while all the money and all the media attention is focused on the European venture. London will be given a major shot in the arm and there will be new teams in Paris and Toulouse. Eventually, it is anticipated that if the Super League matches up to expectations there will be enough interest to talk about new clubs springing up in areas of large population such as the Midlands, the North East and South Wales.

Indeed, there are plans to form a new team in Cardiff sooner rather than later but at this stage it is envisaged that the new side will play in the first division rather than make an immediate entry into the Super League.

I take the view that Oldham have done well to get into the Super



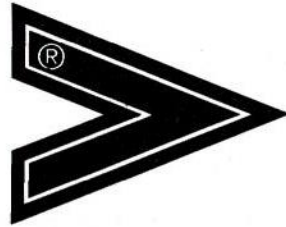
arena. Three years ago we would not even have been considered. The fact that we are in it is testimony to the work we have put in over the past three years and our achievements in clearing off a lot of debt, negotiating with Oldham Council for a new ground, consolidating in the first division and reaching the cup semi final this season.

We still have another home game left after today. The outstanding Castleford match has been rearranged for next Thursday evening, but the programme for that match was printed two or three weeks ago.

Our win at Sheffield renewed our hopes that we might still finish in eighth place, but whatever happens our only remaining home game is against Castleford next Thursday. Rather prematurely, therefore, I wish to thank everyone who has done a good job for the club in the season now ending, all those behind the scenes, the players, Andy Goodway and his coaching staff, the shareholders, members, season ticket holders and fans.

Your support is appreciated. Thank you.

TODAY'S MATCHBALL SUPPLIED BY



**Mitre**®

MITRE SPORTS INTERNATIONAL LTD.  
BIRKBY, HUDDERSFIELD, HD1 5AJ. TEL: 0484 537488. FAX: 0484 530042

A GENESCO Company



**The Kit Choice of Champions.**

# CLOSE UP ON SALFORD

## Our visitors in detail

### GARY TYROR (Full back)

Goal kicking full back who turned professional with Salford from the Orrell RU club in December 1992 signing up on a 3 year contract. Made his first team debut at the back end of last season and has now been handed the number one jersey following the retirement of Garry Jack.

### JASON CRITCHLEY (Winger)

A 1992 close season signing from Widnes in the deal that took Adrian Hadley to Naughton Park. Already proved to be a tremendous acquisition to the club with his power and pace. Already a Great Britain Under 21 player when he arrived at the Willows, he has since represented England against Wales. Salford's top try scorer last season with 25 touch downs.

### SCOTT NAYLOR (Centre)

Snapped up from Wigan during the 1993 close season. Highly rated but suffered through injury in his first season at the Willows, which restricted him to just half a dozen appearances.

### SAM PANAPA (Centre)

A bargain £15,000 summer signing from Wigan, the former Sheffield Eagles player, who has gained 89 Kiwi test caps, made 48 appearances for the Riversiders last season including the Premiership final, when he was voted man of the match.

### MARTIN BIRKETT (Centre)

Joined Salford originally on a 3 year contract in December 1989, after impressing in the alliance side. Formerly with the Frizington A.R.L club but progressed well in the pro ranks to represent his native Cumbria.

### PHIL FORD (Winger)

Signed from Leeds in the deal that took Reds forward Mick Worrall to Headingley during the 1992 close season. Phil is a great Britain and Welsh Rugby League international who toured Down Under in 1988, when he enjoyed much success. Originally signed professional forms with Warrington in 1981, later having spells at Wigan, Bradford Northern and Leeds. Still a prolific try scorer.

### PHILLIP SWIFT (Winger)

Former Saddleworth Rangers A.R.L. player who joined Salford in October 1990. Played against Swinton in the 1992 pre season friendly but had to wait until April 1994 to make a try scoring debut at Wakefield Trinity.

### STEVE BLAKELEY (Stand off)

Signed from Wigan on a 3 year contract in November 1992, making 14 appearances in his inaugural season at the Willows. Also taking over the goal kicking duties. Formerly played for Leigh Rangers ARC club. Salford's top points scorer last season.

### ANDY GREGORY (Scrum half)

Former Great Britain Test scrum half who joined Salford from Leeds in November 1993. Originally played a trial game for Salford in November 1978 but they failed to sign him and he went to Widnes. He has achieved every success in the game both at club and international level, which has also seen him land the Lance Todd Trophy on two occasions (1988 and 1990). Made 8 appearances at Wembley, finishing on the losing side once. After leaving Widnes he had successful spells at Warrington and Wigan before his shock move to Leeds. Still a matchwinner on his day.

### DAVID YOUNG (Prop)

Team captain, signed from Leeds in April 1991, on a 4 year contract. The former British Lion and Welsh RU international originally joined Leeds on a big contract but thinks did not work out for him at Headingley where he made just 8 appearances. Settled to his task well at Salford and has since represented Wales at Rugby League.

### MARK LEE (Hooker)

A bargain £15,000 signing from St. Helens in January 1990. Went straight into the first team and has been a permanent fixture ever since. A clever footballer who likes to dictate the moves. Accurate touch finder and drop goal expert.

### RICHARD WEBSTER (Prop)

Former British Lions and Swansea flanker, who turned professional with Salford after earning 13 Welsh caps. Scored a try in his first outing with the clubs Alliance side but was restricted to 5 appearances for the 1st team. Still managed to be called up for the Welsh RL side and covered himself in glory by scoring a debut try against France after coming on as sub.

### BOB MARSDEN (Prop)

Former Shaw A.R.L. player who turned professional with Oldham in September 1983 but made only 9 appearances in five seasons prior to moving to Rochdale Hornets, where his career took off under coach Stan Gittins. Voted Player of the Year (twice) and also won the Man of the Match award in the 1991-92 Lancashire Cup final when Hornets lost to St. Helens. Joined Salford in October 1993.

### PAUL FORBER (Prop)

Signed from St. Helens in January 1993 former Great Britain Colts and Lancashire County player at senior level, who had a successful stint at Knowsley Road spanning 11 seasons and almost 250 games. Played in several major finals for St. Helens and is now a prominent member of the Red Devils pack.

### IAN BLEASE (Second row)

Local lad, Ian has been at the Willows since March 1985 and is due a benefit at the end of this current season. Turned



Andy Gregory - Coach

professional from the Folly Lane ARL Club. The club captain leads by example and he made his county debut for Lancashire v Yorkshire in 1991.

### MIKE GREGORY (Loose forward)

Close season signing from Warrington, originally turned professional with Wire from the Wigan St. Patricks ARL club in the close season of 1982 making 14 appearances in his first season at Wilderspool. Thoroughly deserved his Great Britain call up in 1987 and has played on 20 occasions for his country, eventually becoming captain. Led Great Britain on the 1990 tour Down Under but has since had to battle against injuries. A talented player who has also represented Great Britain Under 21's and Lancashire.

### CLIFF ECCLES (Prop forward)

Joined Salford from Rochdale Hornets in August 1994 in a swap deal that took Reds stand off Wayne Reid to Spotland. He made his debut for Salford against Hull when he came on as Substitute in the 33-28 victory. He is the younger brother of Barrow's former GB and Warrington forward Bob Eccles.

### CRAIG RANDALL (Loose forward)

Turned professional from the Leigh Miners ARL club in May 1991 and made his debut for the club as substitute at Leeds on April 1st 1992. Originally joined the club on a 4 year contract.

NEW CLUBCALL NUMBER 0891 122 772

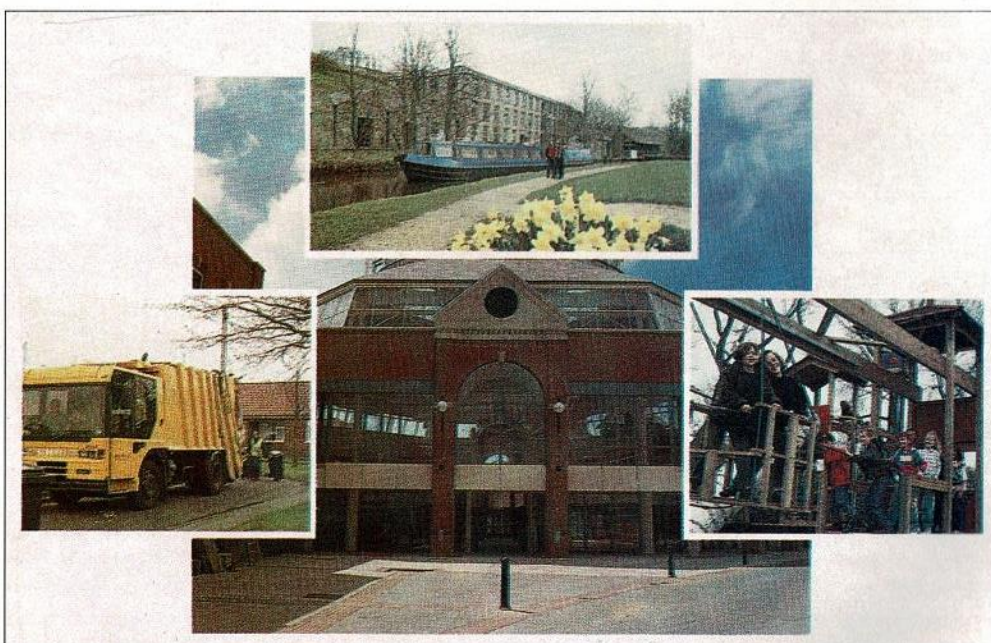
NEW CLUBCALL NUMBER: 0891 122 772

# Tackling the issues...



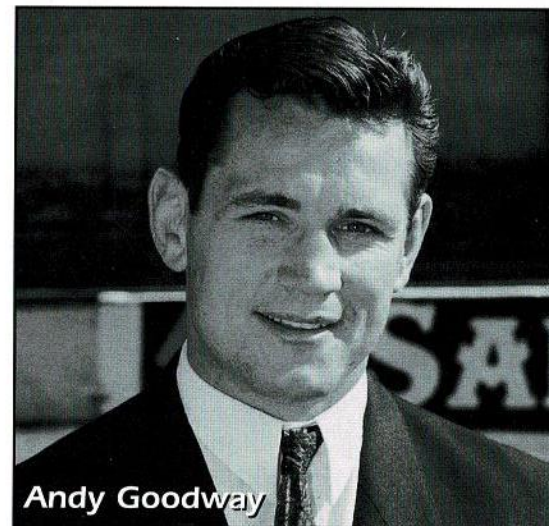
## on all fronts!

Employment and economic development, education, the environment, housing, recreation and culture, social services, roads and transport plus a good deal more!

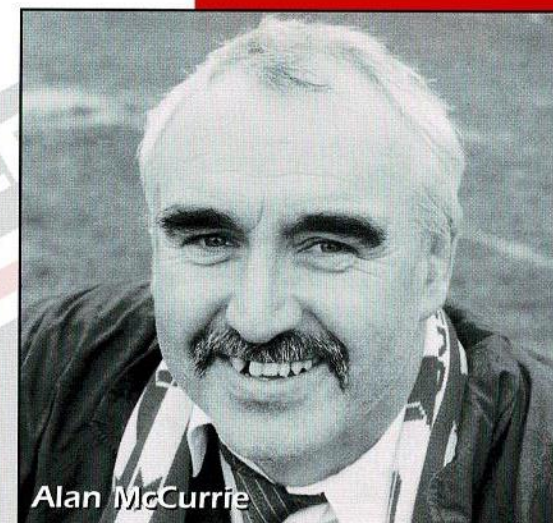


Enquiries about Council services and policies to the Chief Executive's Department  
Telephone: 061-911-4708

# GOODWAY & McCURRIE



Andy Goodway



Alan McCurrie

A very warm Watersheddings welcome to my old friend Andy Gregory and his Salford team for today's holiday encounter.

After our excellent result last weekend at the Don Valley Stadium we must approach today's game in confident mood and make our final push for a top eight spot.

A look at the league table will show Salford chasing hot on our heels and we must give the opposition

the respect they obviously warrant.

With the quest for Wembley now out of our system we should have no excuses in concentrating on our league position and hopefully will be in the frame for a Premiership play off game come the end of the season.

Let's hear all our supporters get behind the lads this afternoon and maybe give them that little extra encouragement they need.

### STONES BITTER CHAMPIONSHIP

#### Division One

	P	W	D	L	F	A	Diff	Pts
Wigan	27	25	0	2	1014	352	662	50
Leeds	27	22	1	4	773	470	303	45
St.Helens	27	18	1	8	790	572	218	37
Halifax	27	17	2	8	713	488	225	36
Warrington	27	17	2	8	704	489	215	36
Castleford	26	16	2	8	701	522	179	34
Bradford N	27	15	1	11	739	574	165	31
Sheffield	27	12	0	15	532	643	-111	24
OLDHAM	26	10	1	15	470	642	-172	21
Salford	27	9	1	17	548	713	-165	19
Workington	27	9	1	17	428	703	-275	19
Wakefield	27	9	0	18	408	665	-257	18
Featherstone	26	8	1	17	492	600	-108	17
Widnes	26	8	1	17	405	609	-204	17
Hull	27	6	1	20	517	758	-241	13
Doncaster	27	5	1	21	425	859	-434	11

NEW CLUBCALL NUMBER 0891 122 772

# ROUGHYED MERCHANDISE

Oldham Rugby Mugs  
NOW DUE IN

BRONX HATS arriving Shortly  
(Navy & Red)

**SHOP SALE NOW ON**  
Call in and get yourself a bargain  
Limited Number of Baby Coats

		Pre Sale	Sale		Pre Sale	Sale
REPLICA SHIRTS	Adults	34.99	27.99	Drill Zipped Bomber Jackets (age 2-5)	18.99	15.99
	Childrens	29.99	23.99	Cord Hooded Jackets (age 1-3)	18.99	
	up to 32			Black Cord Toggle Jacket (age 4-6)	24.99	
TRACKSUITS	Adults	54.99	43.99	Lined Bomber Jacket	49.99	
	Childrens	49.99	39.99	Roll Neck Sweater	20.00	
	up to 32			White Dress Shirts	15.00	
Roughyed T-Shirts	Boys	12.00	9.60	Oldham Rugby Towels	5.00	
	M. EXL	16.00	12.80	Key Rings	2.50	
	Boys	19.50		Roughyeds Long Sleeve Sweatshirts	25.00	20.00
Roughyed Sweatshirts	M. EXL	25.00	20.00	Roughyeds Short Sleeve Sweatshirts	22.50	18.00
	Rugby Balls	10.00		Polo Shirts	15.99	12.79
	Mini Balls	3.99		Shorts	12.99	10.39
Mitre & Oldham	Rugby Nuts	5.99		Shorts	14.99	11.99
	Belts (Oldham rugby leather)	15.00		Socks	5.99pr	4.99pr
	Car Sticker	2.00		Framed Pictures of Watershedding	45.00	36.00
Hats & Scarves	Umbrella	5.50		originals limited edition		
	Pennants	5.00		Framed Picture of Rugby League Legends	25.00 each	
	Rugby Wobbler	3.99	3.19			

CENTENARY BADGES IN A PRESENTATION BOX  
(Original Design) ORDERS BEING TAKEN  
CENTENARY TIE PIN, CUFF LINKS & KEY RINGS

WHY NOT VISIT SPINDELLS SHOPPING CENTRE AND  
LOOK AT OUR STALL. LOTS OF BARGAINS TO BE HAD

SHOP OPENING HOURS:-  
Mon to Fri: 9.30am to 4.00pm  
Saturday: 10.00am to 2.00pm  
Matchday: 1.00pm to 3.00pm  
4.30pm to 5.00pm

ROUGHYED TELEPHONE ORDERS  
THIS SERVICE IS AVAILABLE

061 624 4865



Mark  
Cheetham of  
Tanfield  
(Oldham)  
Limited hands  
the keys of  
the sponsored  
car to John  
Watkins.  
Jason Temu  
and Joe  
Faimalo look  
on.

TANFIELD (Oldham) Limited

125 Chamber Road,  
Oldham,  
Lancashire.  
OL8 1AA  
Tel: 061-633 4872  
061-627 0435  
Fax: 061-627 0448



TANFIELD (Oldham) LIMITED

OLDHAM Rugby League Club

working together

# BUSINESS TALK

with Ray Hill

## WEMBLEY TRIP

Due to a lack of interest the Oldham Rugby League official Wembley trip has had to be cancelled.

## CABARET DINNER

The Cabaret Dinner which was held at the Birch Hall Hotel on Friday 24th March was a great success and our thanks go to everybody who supported the event.

## OLDHAM RUGBY GOLF CLASSIQUE 5th May 1995

- \* Venue Oldham Golf Club
- \* Entry Fee £150 Per team

- of four
- \* Format better ball stableford
- \* Prizes. A generous supply of prizes to be won. Prizes for the top ten.
- \* Teams
- \* Wooden spoon prize
- \* Longest drive
- \* Nearest to the pin
- \* A special hole in one prize
- \* Your companies support would be appreciated and we are taking this opportunity to invite you to enter a team

For further details contact  
Ray Hill on 061 624 4865

## THE INTERNATIONAL GROUNDS OF RUGBY LEAGUE by Trevor Delaney

This profusely illustrated book, which is to be published in time for the game's centenary in August 1995, is an ambitious companion to the widely-acclaimed The Grounds of Rugby League.

Apart from all the major English venues, The International Grounds of Rugby League will also cover every ground in the world where international and test matches have been played by the game's leading International Board countries over the last century - over 100 grounds in total.

There will therefore be the following specific sections written by an expert on that particular country or region: Australia; England (including soccer and other venues, such as Wembley, and the

proposed Centenary World Cup venues, such as the Alfred McAlpine Stadium); France; New Zealand; Papua New Guinea; Wales; and the Pacific Islands; Fiji; Tonga and Western Samoa. The page format of this (approximately 208pp) softback edition will be 198mm x 210mm; and there will be a full colour cover and an 8 page full colour section.

## PRE-PUBLICATION SUBSCRIPTION OFFER (Ends 15 May 1995)

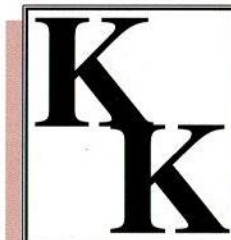
If you would like your name to appear in the subscription list at the rear of this first edition, please complete the form below and send £14.95 (which includes postage and packaging) to:

T.R. Delaney, 6 Elmwood Terrace,  
Ingrow, Keighley BD22 7DP, West Yorkshire.

Tel: 01535 215550

(Please make cheques payable to T.R. delaney)

AGENTS AND CANVASSERS WANTED IN ALL AREAS. EXCELLENT COMMISSION RING RAY OR JOHN 061 624 4865



KEVIN  
KERSHAW  
ASSOCIATES

Commercial,  
Criminal & Private  
Investigations

Suite 3, Good Hope  
House, Bentinck St  
Ashton-Under-Lyne,  
Lancashire OL6 7SL

Telephone:  
061-343 6510  
Mobile:  
0374 455905  
Fax  
061-339-0046

NEW CLUBCALL NUMBER: 0891 122 722



# McCarthy's Catering

CELEBRATING A WEDDING, ANNIVERSARY, 18TH, 21ST OR EVEN A SPORTSMEN DINNER, WE CAN OFFER AN EXTENSIVE SELECTION OF HOT AND COLD FOOD

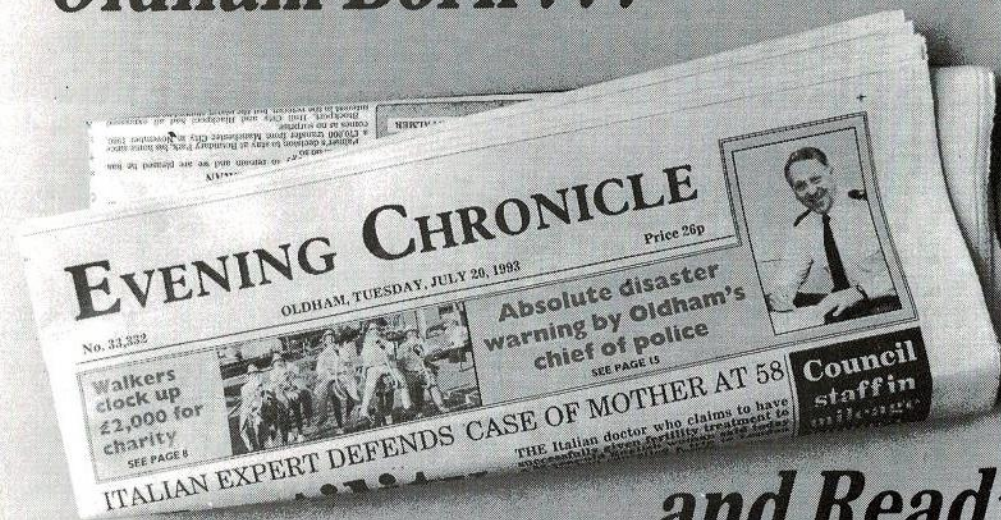


COMMERCIAL ENQUIRIES VERY WELCOME

## 0457 832607

VALE MILL LODGE, HUDDERSFIELD ROAD, MICKLEHURST, MOSSLEY

## 'Oldham Born...



## ... and Read'

"WHEN YOU AIM FOR PERFECTION YOU DISCOVER IT IS A MORNING TARGET."  
- Joseph Crossman

# GRASS ROOTS

## A LOOK AT THE LOCAL AMATEUR RUGBY SCENE

Those fans not fortunate enough to be travelling up to Workington with Oldham next Monday would be well advised to make a return visit to Watersheddings for the final of the Standard Cup competition, the most prestigious tournament in amateur rugby.

The Standard Cup was first contested in 1904 when Heyside lifted the trophy after beating Rochdale Rangers 9-0 in the final. Since then there has been a further 80 competitions with the trophy having been lifted by 29 different clubs. Last seasons winners, Higginshaw, have won the trophy more than any other club, on 13 occasions.

However, next Monday's final is between two clubs who have dominated the Standard Cup in recent seasons, Saddleworth Rangers and St.Annes. Rangers will be appearing in their 24th final, a record, whilst St.Annes will be stepping out in their 20th final. From these appearances, Saddleworth have won the trophy on 12 occasions and St.Annes have won 11 finals. They once met in five consecutive finals between 1987 and 1991 and Monday's final will be the eleventh time that they have met in a Standard Cup Final. Each has defeated the other on five occasions with Saints no doubt proud of their

38-18 victory over Rangers in 1987, the highest aggregate score in a final but not the widest margin of victory. Saints do hold that record - a 30-0 victory over Higginshaw in 1977.

The last time these clubs met in a competitive cup-tie was in December 1993 for a second round Silk Cut Challenge Cup-tie. Rangers had ground advantage for that tie and it was to prove decisive at the end of a gripping encounter. Rangers won 12-4 but the final score flattered them somewhat for St.Annes gave their all and dominated the match for long periods.

A similar encounter is envisaged on Monday. It is an 11am kick-off and patrons are asked to get up to Watersheddings in plenty of time, for this final is sure to attract a huge attendance.

It is also a big week socially for both of Mondays finalists. Tomorrow evening St.Annes are staging a concert in their clubhouse. The artist is Presley in Mind who have proved very popular when they have appeared previously. Tickets, priced £3, can be obtained from any of the St.Annes management or pay on the night. Next Friday, 21st April, Saddleworth are staging a Family Quiz Night at the Rangers clubhouse. It's a 7.30 kick-off so get there early, take some friends and enter a team.

## THE NATIONAL WOMEN'S RUGBY FOOTBALL LEAGUE REFEREE ASSOCIATION

The Rugby League are to launch and financially promote a new and inspired Referees Association, to advance, develop and support women officials, as well as encouraging other women to take an active role. The launch date of the National Women's Rugby Football League Referee Association is to be held on Tuesday 9th May at Hicksons, Wheldon Road, Castleford at 7.00pm. Anybody interested in attending the meeting to inform me directly by phoning 0113 2446577.

Yours sincerely

Ms Julia Lee

## BEE FAMILY FINANCE

IF YOU REQUIRE CREDIT FOR

- Household Goods
- Carpets
- Furniture
- TV's
- Car repairs etc

We can also arrange credit facilities for leading fashion shops in Oldham and Manchester

A family business that looks after your family's needs  
**JUST CALL IN AT THE BEE FOR FRIENDLY ADVICE**  
Telephone: 624 9908

NEW CLUBCALL NUMBER: 0891 122 722



**Colourplan**  
design & print

**Colourplan**  
design & print

Designers and Printers of the Oldham RLFC Matchday Magazine  
11 Waterside Court, St. Helens Technology Campus, St. Helens, WA9 1UA  
Tel: (0744) 723868 Fax: (0744) 754416/753029

# TODAY'S BIG MATCH SPONSORS

## BIG MATCH SPONSOR

### REDDISH DEMOLITION LTD

ALBION HOUSE  
UNDER LANE  
CHADDERTON  
OLDHAM OL9 7PP  
Telephone: 0161 682 6660  
Fax: 0161 682 5252

## MATCH SPONSOR

### H. & A. HAULAGE LTD

814 ASHTON ROUND, BARDSLEY,  
OLDHAM, LANCS OL8 3HS  
TEL: 061 624 4919 FAX: 061 652 2440

### Charterplan

151 CHARLES STREET, STOCKPORT SK1 3JU.  
TELEPHONE: 0161 477 3555 FAX: 0161 480 2163

## EXECUTIVE MATCH SPONSOR

### WILLIAM CHADWICK

**BUILDER & CONTRACTOR**  
24 Sholver Hill Close, Moorside, Oldham  
Telephone: 0161 284 0641  
Fax: 0161 284 0641

## MAN OF THE MATCH SPONSOR

### GREEN ASH HOTEL

New Tame - Delph - Saddleworth - Oldham - OL3 5TS  
Tel: 0457 871035 Fax: 0457 871414

## MATCHBALL SPONSOR



### **MIDAS** LOTTERIES

9 Wynford Square, West Ashton Street, Salford Quays,  
Manchester M5 2QP  
Tel: 061 743 0343 Fax: 061 743 0136

# PAUL ABBOTT LIMITED SPRINGHEAD GARAGE

*Quality Used  
Cars and First  
Class Servicing*



**TEL: 0161 624 2725 • FAX: 0161 624 5128**

NEW CLUBCALL NUMBER: 0891 122 722

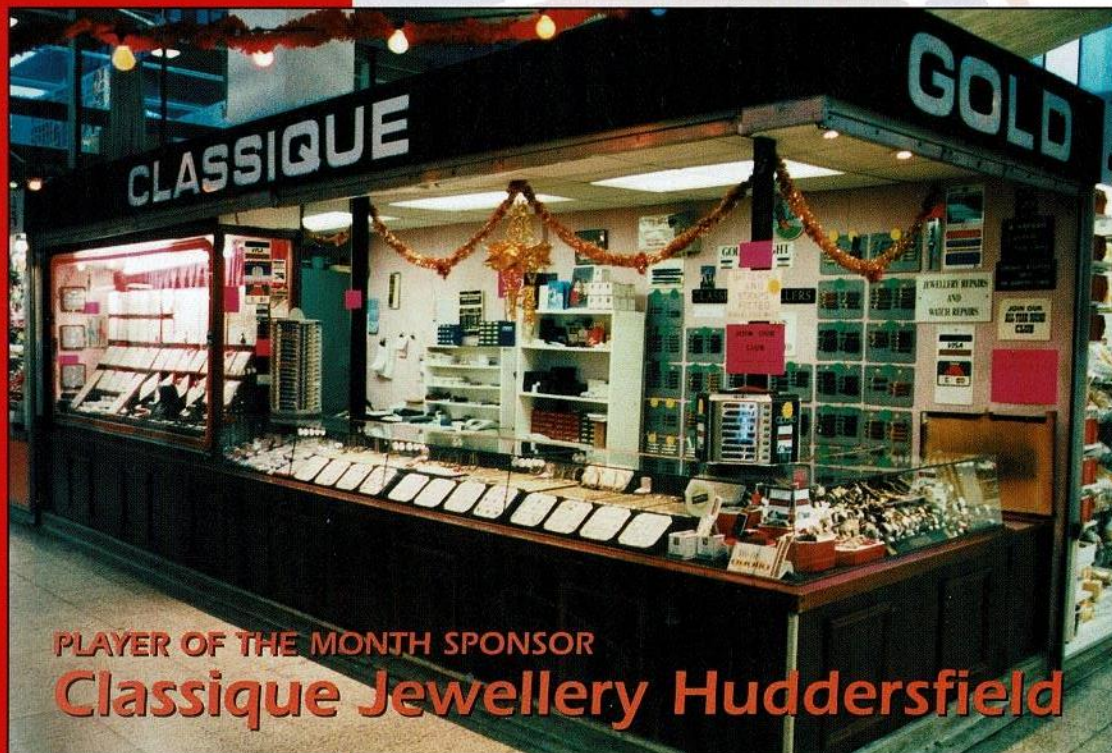
# HOLROYD Skip Hire Ltd.

DIGGER & TRACKED  
MACHINE HIRE



**YOUR FIRST CHOICE IN  
WASTE REMOVAL**

TELEPHONE:  
**061-642 1118 OR 061-624 1311**  
EVENINGS FAX:  
**061-624 1171**  
LITTLE END FARM, MOORSIDE, OLDHAM.



PLAYER OF THE MONTH SPONSOR  
**Classique Jewellery Huddersfield**

"THE SURE WAY TO BE LATE IS TO HAVE PLENTY OF TIME"  
- Mark Twain.

# CASH <sup>BIG LEAGUE</sup> BONANZA

**JOIN NOW £1500** won every week  
YOUR CHANCE TO WIN £1000 A WEEK ■ £100 A DAY MONDAY TO FRIDAY  
FOR ONLY £1 PER WEEK

Payable by Banker's Order or collected at your place of work, local pub  
or newsagent. Why not become an agent yourself and earn generous commission?

## WEEK No. 8 - Week Ending February 26th 1995

<b>£1000</b> <b>Winner:</b> C8671 <b>Agent:</b>	W. Brierley E. Whalley	<b>EXTRA £10 BONUS PRIZE</b> <b>Winner:</b> A4528	S. Wilson
<b>Monday £100</b> <b>Winner:</b> A4748 <b>Agent:</b>	J. Whatmough M. Dransfield	<b>Winner:</b> F5289	J. Ogden
<b>Tuesday £100</b> <b>Winner:</b> D2465 <b>Agent:</b>	A.V. Brogden M. Allingham	<b>Winner:</b> C6288	R. Butterworth
<b>Wednesday £100</b> <b>Winner:</b> F7924 <b>Agent:</b>	T. Smith Highfield Inn	<b>Winner:</b> D7748	J. Crompton
<b>Thursday £100</b> <b>Winner:</b> E1622 <b>Agent:</b>	N. Corcoran Trippers News	<b>Winner:</b> D1046	J. Marsland
<b>Friday £100</b> <b>Winner:</b> D8787 <b>Agent:</b>	A. Houghton Royal Oak	<b>Winner:</b> H4897	p. Ellingworth
		<b>Winner:</b> E1595	B. Jackson
		<b>Winner:</b> E8262	B. Rouse
		<b>Winner:</b> D0311	M. Edwards
		<b>Winner:</b> A4261	K Fletcher

£50 Agents Prize Draw: 141 - T. Myers

COLLECTORS AND CANVASSERS WANTED IN ALL AREAS (Excellent Commission) TELEPHONE 061-620-4870

**CASH BONANZA HOTLINE 061 620 4870**

## GARFORTH GLASS & MIRROR CENTRE

Established 1945

### GLASS DEPT

- ✱ Glass cut to size
- ✱ Toughened Glass
- ✱ Laminated Glass
- ✱ Double Glazing
- ✱ Glass Table Tops
- ✱ Glass Cabinet Doors
- ✱ Glass Shelves
- ✱ Holes Cut & Drilled
- ✱ Decorative Glass Engraving
- ✱ Putty, Beading Silicone
- ✱ Decorative Leading
- ✱ Delivery Service
- ✱ Rigid Plastic Sheet

### MIRROR CENTRE

- ✱ Large Showrooms on two floors
- ✱ Extensive range of framed & frameless mirrors
- ✱ Mirrors made to size
- ✱ Bevelled edge mirrors
- ✱ Brilliant cut mirrors
- ✱ Engraved design mirrors (e.g. Birds, Flowers, Fish etc)
- ✱ Security Mirrors

### PICTURE FRAMING

- ✱ Bespoke picture framing
- ✱ Tapestries, embroideries, oils, stretched & framed
- ✱ Mounts cut to size
- ✱ Drymounting & heat sealing
- ✱ Readymade frames including ovals & swept
- ✱ Photoframes
- ✱ Clip frames stocked & made to size
- ✱ Chop & assembly service for D.I.Y.
- ✱ 'Special Offer' mouldings always in stock

*Personal, Friendly service from a family firm!*

49-55 CO-OPERATIVE STREET, SPRINGHEAD, NR. LEES, OLDHAM  
TEL: 061-624 7495 FAX: 061-627 5347



# MALCOLM LORD

THE FACE BEHIND THE VOICE OF BBC GMR'S RUGBY LEAGUE

## HAVE A NICE DAY - BUT...!

To all those intending to go to the Challenge Cup final at Wembley could I be so forward as to present my own little guide to "A Day Out In London".

1 You must take it for granted that because we are from "up Norf" it is assumed that our heads zip up the back.

2 You must come to terms with the fact that regardless of what news papers and politicians tell us about the South of England being a wealthier place than the North, this is not true, it can't be or they wouldn't feel the need to rip us off at every opportunity.

3 You must make allowances, you see I once read a newspaper article with the headline - "the population of London is denser than the population of Manchester" how true.

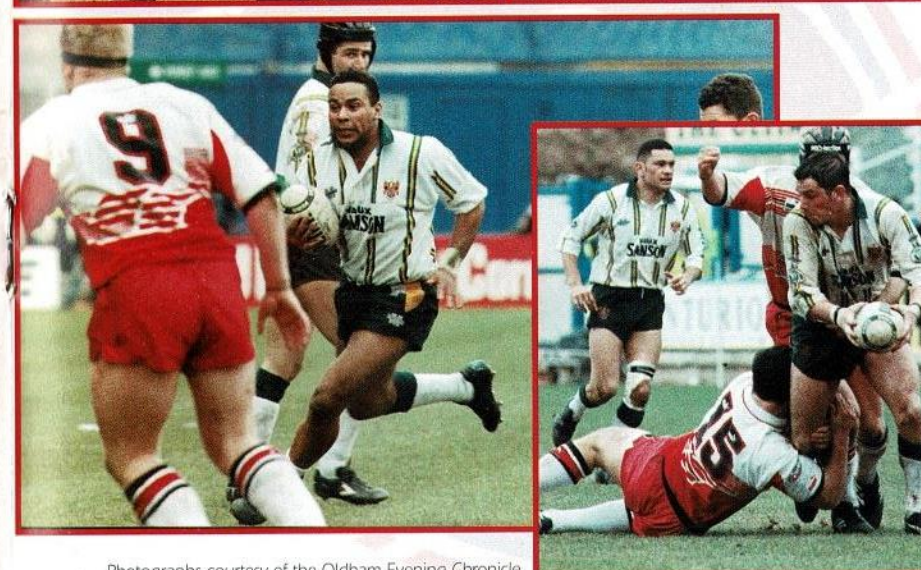
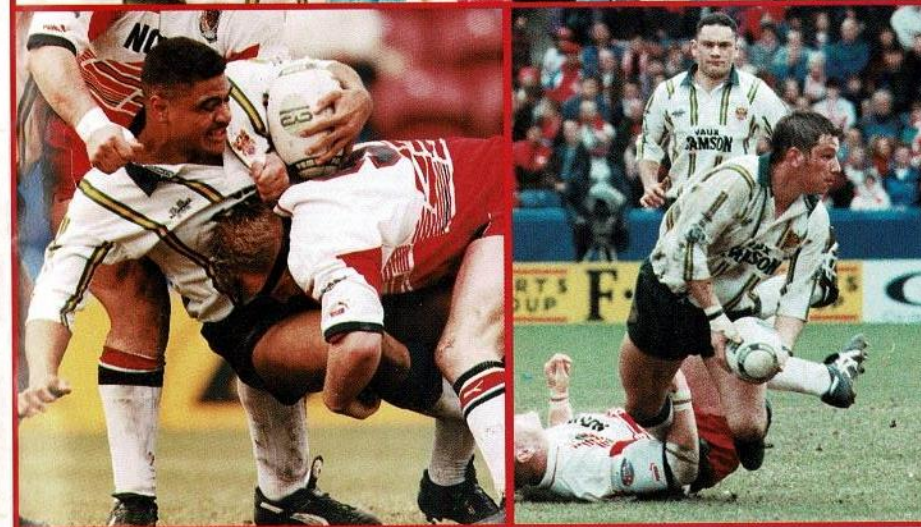
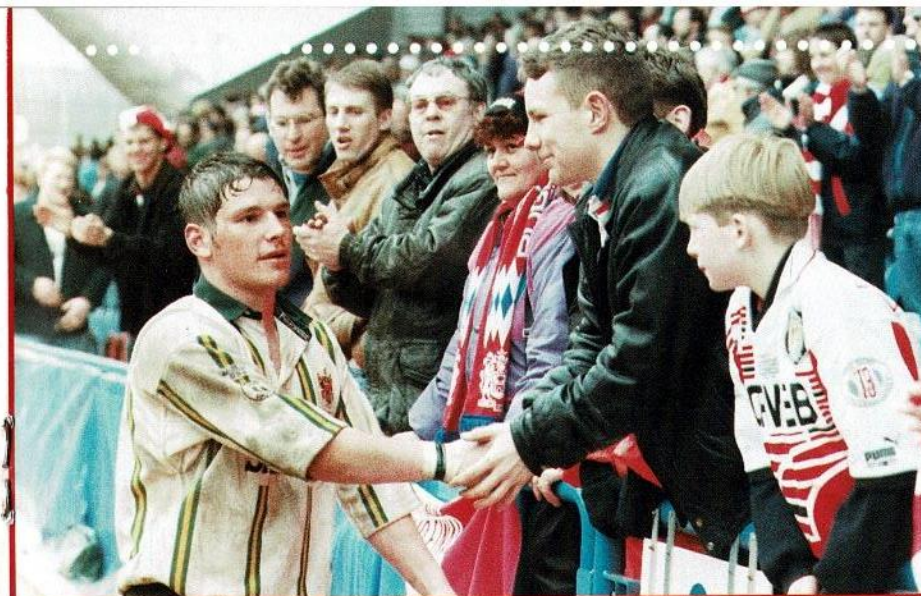
4 Be humble, it may be that this acrimony is because we hold all the trophies up here.

5 Take heed of the following:-  
Take as much food and drink with you as you can, if you must eat out do so on the way to or indeed away from Wembley, spend as little as you can at Wembley itself.

6 Remember not all thieves and vagabonds wear masks and hide down side streets, a lot of them work in the vicinity of Wembley Stadium.

7 And finally if you do stay in a hotel overnight be warned, do not ring the number in your room for Alcoholics Anonymous, its probably an out-door license round the corner.

Malcolm Lord

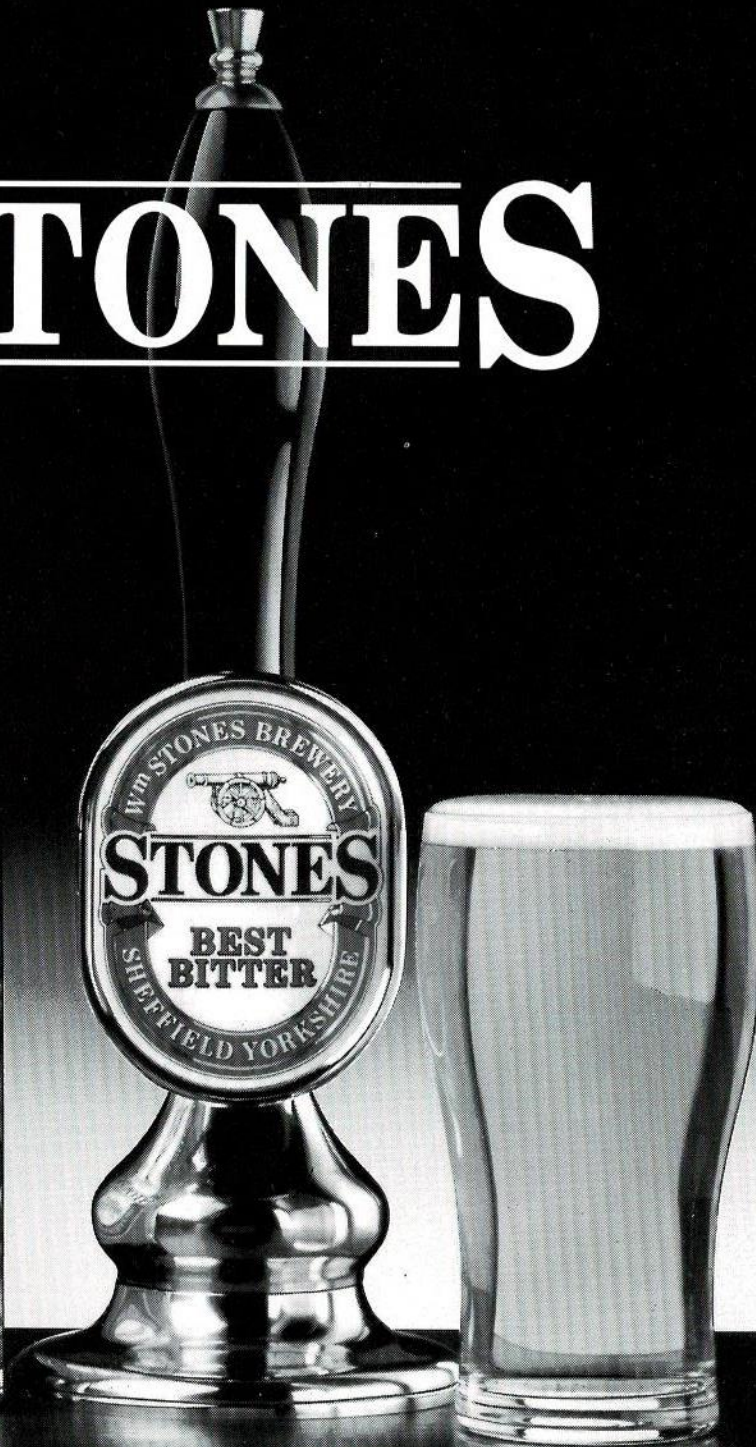
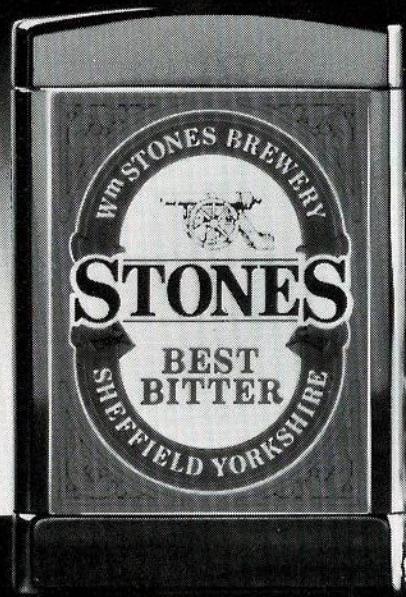


Photographs courtesy of the Oldham Evening Chronicle.

# ACTION REPLAY

Silk Cut Challenge Cup  
v WIGAN at HUDDERSFIELD

# STONES



THE MAJOR SPONSOR OF RUGBY LEAGUE.

## Sponsorship & Hospitality Packages 1994/95

During the year we hold many fundrais- ing and promotional events for compa- nies.

**Why not sponsor the whole event? This includes all publicity material carrying your company message or logo, photograph in the local press and matchday programme. Also the opportunity to discuss your product or service with a 'captive' audience.**

This Years Events Include:-

### GOLF TOURNAMENT

A day out for guests or colleagues at a local golfing venue. Enjoy the chance of winning a new car for a hole-in-one at a designated hole. This together with a meal after your round and a prize giving ceremony with a comedian or speaker makes the whole day one to remember.

### SPORTSMANS EVENINGS

After the success of our last two dinners tickets are in great demand. Again supported by local media and businesses gives you and your company the opportunity of entertaining guests for a full evening of quality. Quality food, quality wine, quality speakers.

### LUNCHEON CLUB

This year for those who feel unable to attend the Sportsmans Dinners in the evenings, they will have the opportunity to 'socialise' with clients or colleagues over a lunch which also has a celebrity speaker. The ideal way to mix business and pleasure, combining the highest quality cuisine, celebrity speaker and an afternoons entertainment.

### PROMOTE YOUR COMPANY

This is a unique concept to Rugby League and one we feel will be very successful. The idea comes from America and it is quite simple.

At each home game a company 'Gives' away merchandise (agreed between ourselves) this could be:

Umbrellas • Baseball Caps • Pens • Radios (Quantities to be agreed)

The list is endless

Each gift will have the name of your company on and also something connecting it with Oldham R.L.F.C.

These items and games are advertised in advance and this will encourage children, adults and families to attend in the hope of getting a 'gift'.

The choice of gifts are endless these can range from pin badges or T-shirts to shaving kits or umbrellas.

### TICKETS

During the season we accept that every game is not going to be a 'sell out'. So we have decided to sell these tickets to companies at greatly reduced prices. The tickets are only for standing areas and cannot be exchanged for seats.

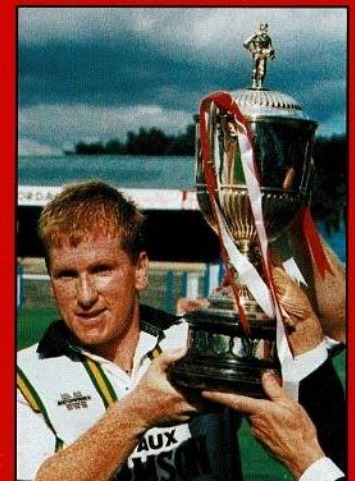
The regular ticket prices are – Adult £6.00 – Child/OAP £3.00

These tickets can be used as prizes, or simply public relation exercises.

The tickets will be available for the following games:

Doncaster • Workington T. • Wakefield T. • Sheffield E. • Hull

The tickets are available in 100's



Martin Crompton  
Receives the Law Cup

### 1994/95 HOSPITALITY PRICE LIST

Type of Package	Match	Executive	Man of the Match	Match ball		
Number of Guests		20*1	10*2	4*3	4*3	
Date	Versus	K. Off				
21/8	Halifax	3.00pm	£1,400	£750	£275	£275
4/9	Wigan	3.00pm	£2,000	£1,000	£350	£350
18/9	Doncaster	3.00pm	£1,100	£650	£275	£275
2/10	St. Helens	3.00pm	£1,500	£800	£300	£300
14/10	Widnes	7.30pm	£1,400	£750	£275	£275
30/10	Featherstone	3.00pm	£1,250	£700	£275	£275
22/11	Bradford	7.30pm	£1,500	£800	£300	£300
11/12	Warrington	3.00pm	£1,400	£750	£300	£300
<b>1995</b>						
1/1	Workington	3.00pm	£1,100	£650	£275	£275
8/1	Leeds	3.00pm	£1,400	£750	£275	£275
22/1	Sheffield E	3.00pm	£1,250	£700	£275	£275
5/2	Hull	3.00pm	£1,250	£700	£275	£275
5/3	Wakefield T	3.00pm	£1,250	£700	£275	£275
26/3	Castleford	3.00pm	£1,500	£800	£300	£300
14/4	Salford	7.30pm	£1,250	£700	£275	£275

Prices Exclude VAT

Cost per head for extra guests – \*1 £60 – \*2 £60 – \*3 £50

"THE WILL TO WIN IS NOT NEARLY AS IMPORTANT AS THE WILL TO PREPARE TO WIN"  
- Bobby Knight

# THE GROWING GAME

Development News Supported by P. Casey and Co and Sportsmatch



## STAR PIC

Everpresent this season  
Martin Crompton

Today's game against Salford takes on even greater significance with all the talk of Super League etc. Will Oldham and Salford exist next season or will we be part of a Manchester Super Club. Whatever happens it is certain that the times ahead are as exciting now as they have ever been.

The match today is a triple header, with Oldham Under 11s playing first against Salford Under 11s and Oldham Under 13s playing immediately before the game at 2.10 against Salford Under 13s. All four teams are now looking forward to the Greater Manchester Youth Games in June. Today provides excellent preparation for that competition and also is a fitting end to a hard season of Town Team Rugby League. The Easter period is always

exciting as Championships are won and lost and Cup Finals are contested. Oldham is no exception and next week on Easter Monday St. Annes and Saddleworth compete in the Standard Cup Final. The game kicks off at 11.00 with a League Festival beforehand. Then on May 2nd and 4th here at Watersheddings we have the Quantum Oldham Schools Cup Finals. There are 4 Finals on each night and they start at 4.00. Over 80 teams set out in the competition and there promises to be a feast of fine Rugby League.

Over the summer months there will be a diet of Coaching Courses, Levels I, II and III, Touch Rugby, Puma Little League, Summer Coaching Programmes and much more. Watch the Press for details of all the summer's events.

**ERF MANCHESTER LTD** **ERF** TRUCKS DISTRIBUTOR

Trafford Park Road, Trafford Park, Manchester M17 1NJ. Tel: 061 848 8331 Fax: 061 872 8334



Supporting Oldham Town Team Under 13's



PRO-ENVIRONMENT

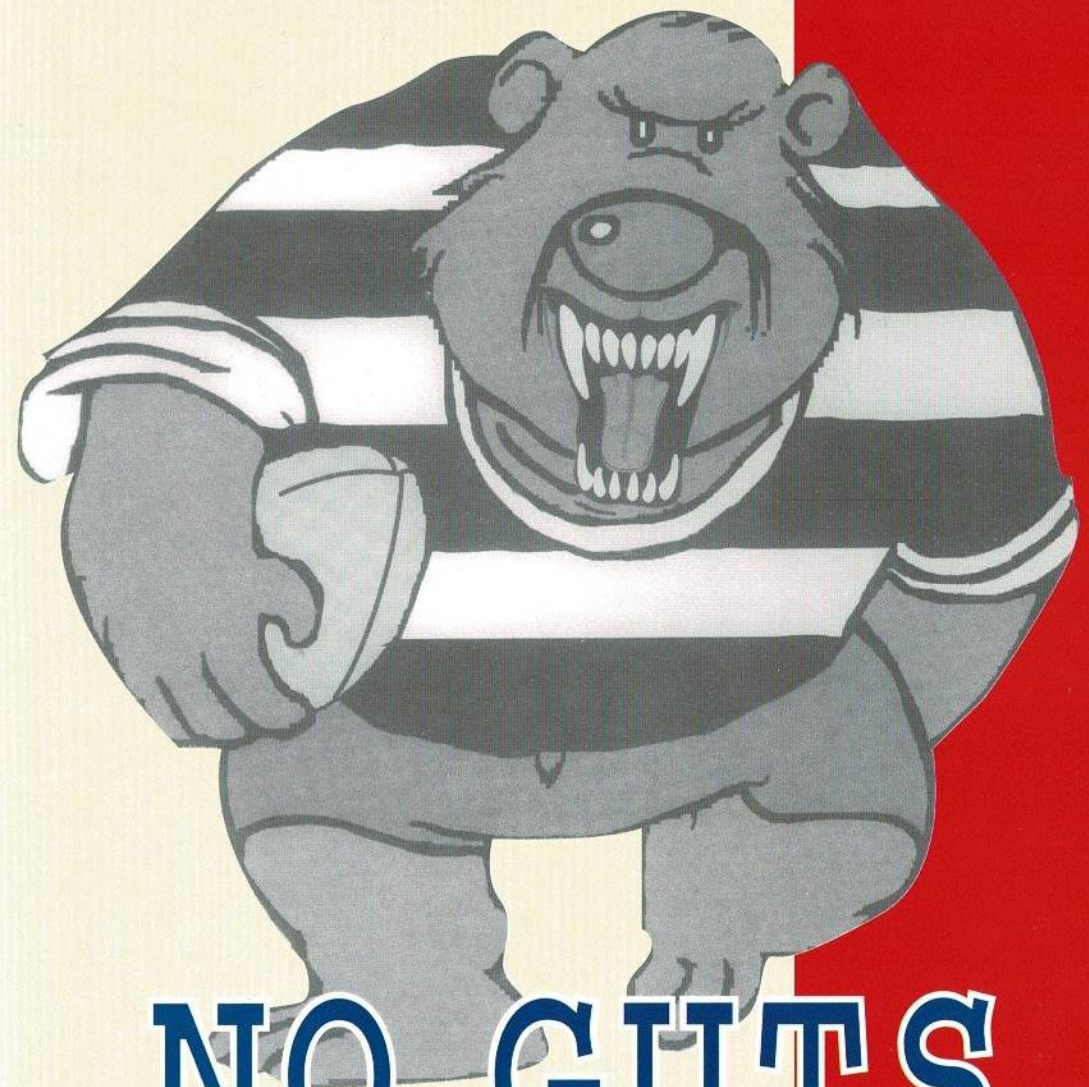
The Casey Group  
of Companies  
PO Box 54, Rydings Road  
Wardle, Rochdale  
Lancashire OL12 9PS

Tel: (0706) 341121  
Fax: (0706) 861156



BUSINESS BACKING SPORT

NEW CLUBCALL NUMBER: 0891 122 722

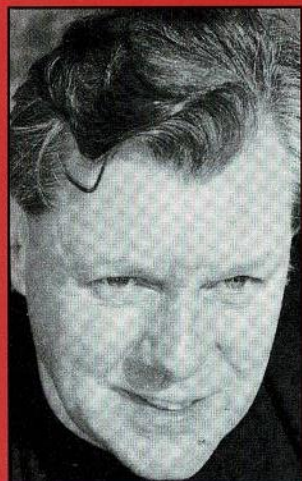


# NO GUTS NO GLORY

"IT IS ONLY EIGHTEEN INCHES BETWEEN A PAT ON THE BACK AND A KICK IN THE PANTS." - Joseph Crossman

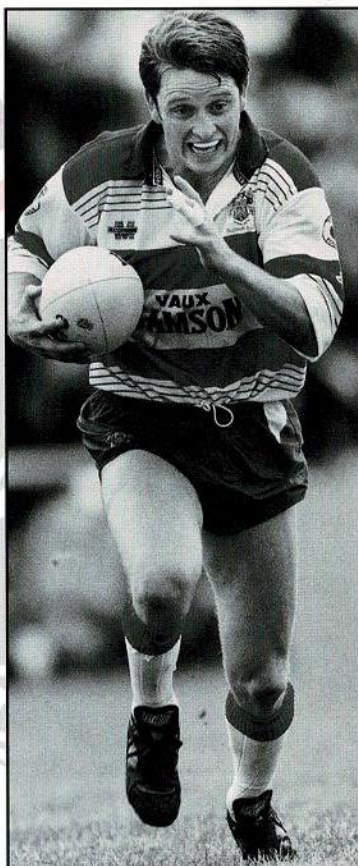
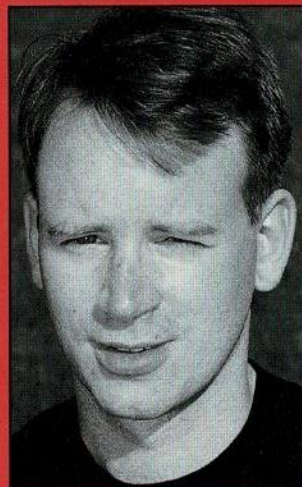
# INJURY UPDATE

## FROM THE TREATMENT ROOM



with  
**John Watkins and Nick  
Hodgeson**

David Stephenson, Scott Ranson and Darren Abram all picked up knocks against Wigan in the Silk Cut Challenge Cup game at Huddersfield, David having to go for an X-ray on a damaged thumb. He was put in plaster for a two week period as the X-ray revealed a small crack. Hopefully, David will be back in contention this weekend. Darren Abram returned to the squad last Sunday at Sheffield, having recovered from a nasty bang on the knee, and seemed to come through the game without any adverse reaction. At the time of writing Scott is well on the way to recovery from his knee injury and should be back for this weekends fixtures.



Scott Ranson - injury in the Challenge Cup semi final against Wigan

TRAVELLING AWAY  
WITH

**THE ROUGHYEDS**  
WORKINGTON TOWN AWAY 17th APRIL  
1995  
KICK OFF 3.00pm

### ACACIA

JOINERS & BUILDERS  
Specialists in U.P.V.C., Hardwood,  
Softwood, Windows, Doors,  
Conservatories, Porches, Stairs.  
FOR THE BEST DEAL IN TOWN  
FITTED BY A FIRST DIVISION  
TEAM CONTACT  
IAN SHERRATT OR SHANE  
TUPAEA  
Tel: 061 678 7026/652 2348  
Mobile: 0585 644571

NEW CLUBCALL NUMBER: 0891 122 722

No 34000

**THE GREAT RUGBY LEAGUE GOLDEN GAMBLE**

**WIN UP TO £2000**

50% of proceeds up to a maximum of £2000 paid to the winner  
50% of proceeds go directly to help your club

**GUARANTEED WINNER EVERY GAME**

Ticket £1.00

**BUY YOUR  
GOLDEN GAMBLE  
TICKET  
NOW!!!**

**It could be a  
WINNER**

LEAGUE

# League

## WEEKEND

# LEAGUE Express

## DELTA CARS

HILL STORES  
156 HUDDERSFEILD ROAD  
OLDHAM

**061 627 2277**

"A GREAT ACTOR CAN BRING TEARS TO YOUR EYES, BUT THEN SO CAN A MECHANIC"  
- Donald Reber

# DUNCANS OF OLDHAM

## OLDHAMS ONLY MAIN DEALER

FOR

# VOLVO

061-624 2404



061-628 6200

# HYUNDAI

061-624 2404

**FIRST FOR SALES • SERVICE & PARTS**



**ALWAYS A HUGE SELECTION OF  
TOP CLASS NEW,  
USED & DEMONSTRATORS  
AVAILABLE**

*Pictured Left: Terry Hall General  
Manager of Oldham Nissan  
presenting Ray Hill with the keys of  
his new sponsored Nissan Sunny*

## ALL ON ONE SITE

ROCHDALE ROAD • OLDHAM • OL1 1NU • OPPOSITE CIVIC CENTRE

# FROM SMALL 'A' CORNS GROW

A look at our Alliance team

Three matches to go as I write these notes, and we need to win two to be certain of the Division 1 Championship. Talk about a "breathless rush in the close tonight". Certainly the end of season has become quite hectic and we are still unsure when we are playing Dewsbury. Remaining matches are Bradford away 10th April and Warrington away 19th April with Dewsbury away to be arranged.

Since my last report we travelled to Castleford and came away with a much deserved 2pts despite being behind 16-20 at half-time. In the second half we restricted Cas to 2pts and hit them with three converted tries to win by 34pts to 22pts. The old Oldham Alliance team spirit was much in evidence and our defence was first class. Tries were scored by a trialist winger, Mike Neal, Dave Jones, Steve Gartland, Craig Booth and Howard Hill, whilst Craig kicked five goals.

Craig Booth has now gone on loan to London Broncos and we certainly missed his kicking ability when we scored 6 tries against St Helens but could only convert one of them. Winning this game would have made the Championship a certainty and with only 30 seconds on the clock, confirmed by the referee, and Oldham holding a 27pts-24pts lead, we looked to have it in the bag. Unfortunately St Helens put up a speculative kick in a last desperate effort. 3 of our players went for the ball, which came loose, allowing the Saints winger an unopposed run in for the converted try which ruined our celebrations.

However, we are still 5pts clear at the top of the League and the dealing of the trophy is still in our hands. By the time you read this it could be decided. We'll do our best. Thanks for your support, the lads have appreciated it.

*Dennis McHugh  
(Alliance Coach)*

		FIRST DIVISION						
	P	W	D	L	For	Agst	Diff	Pts
Oldham	23	18	0	5	704	447	257	36
St. Helens	23	16	1	6	742	496	246	33
Wigan	24	16	0	8	815	504	311	32
Leeds	23	16	0	7	613	383	230	32
Warrington	23	14	0	9	736	435	301	28
Bradford	23	12	0	11	595	564	31	24
Salford	26	11	0	15	637	582	55	22
Dewsbury	23	11	0	12	471	528	-57	22
Hull	26	11	0	15	557	681	-124	22
Castleford	23	10	0	13	458	573	-115	20
Wakefield	26	9	1	16	554	666	-112	19
Featherstone	24	9	0	15	483	716	-233	18
Halifax	22	8	0	14	361	642	-281	16
Ryedale-York	23	4	0	19	380	889	-509	8

### ALLIANCE FIRST DIVISION

DATE	OPPONENT	VENUE	K.O.	RES
August				
19th	Halifax	A	7.30	W36-12
26th	Bradford N	H	7.30	W32-26
September				
1st	Blank weekend			
2nd	Wigan	A	7.30	W26-21
10th	Warrington	H	7.30	L10-32
16th	Dewsbury	H	7.30	W20-12
24th	St. Helens LCC Shield RD1		7.30	W46-22
30th	St. Helens	A	7.30	W42-38
October				
8th	Thatto Heath LCC Shield RD2			W61-12
14th	Ryedale Y	A	7.30	W46-29
27th	Widnes LCC Shield Semi			W30-10
28th	Featherstone R	A	7.30	L22-37
29th	YSC Cup & LCC Shield - Semi Finals			
November				
4th	Halifax	H	7.30	W25-10
10th	Dewsbury	A	7.30	
12th	Wigan LCC Shield Final			L10-24
18th	Wakefield T	H	7.30	W28-8
25th	Wigan	H	7.30	W36-6
30th	Leeds	A	7.30	L18-31
December				
9th	Warrington	A	7.30	
16th	Salford	H	7.30	W44-14
24th	Blank weekend			
30th	Hull	A	8.00	W33-16
January				
9th	Wigan (All. C.C. R1)	A	7.30	W31-8
13th	Castleford (T.B.A)			W50-4
20th	Featherstone R	H	7.30	W42-12
February				
1st	Bradford N	A	7.30	
6th	Halifax (All. C.C. R.2)	A		W28-22
10th	Salford	A	8.00	
17th	St. Helens	H	7.30	
18th	Warrington (All Ch. Cup - R3)			L25-38
24th	Hull	H	8.00	W30-14
March				
2nd	Wakefield T	A	7.30	W36-14
10th	Leeds	H	7.30	L11-31
11th	Alliance Challenge Cup - Semi Finals			
17th	Ryedale Y	H	7.30	W44-17
23rd	Castleford	A	7.30	

## NEIL GIBBISON

*B.D.S., V.U. Manc.*

### Dental Surgeon

36 Oldham Road Uppermill Oldham OL3 6HV Telephone: 0457 872108

# RUFF E. HEAD THE MAN IN THE KNOW

“ There is little to be said, I suspect, about either of our two games against the top two. In both, they were more powerful, slicker and faster. We tried hard, and deserved the credit we were given in the media for showing both the guts and the skills we did to score tries, once well beaten. But the two games together really showed that we already have a Super League in existence in all but name. The benefits conferred by having full time players, with the necessary finance to support large squads, are such that, except for odd one-off occasions, teams of part time pros can't really expect to compete. Whatever emerges from the current ructions down under, this has to be recognised, with effectively a two tier set-up.

Those who feared that the referee-reporting system for uncertain sending-off offences would lead to the cop-out scenario seem to be being proved right. I am sure it was done for the best of reasons but those sitting near me were all surprised not to see David Stephenson walk at the McAlpine Stadium, and there was a blatant spear tackle on Sky the other week, again,

reported only. And did you see Bruce McGuire's display at Castleford? He was eventually shown the red card in the twentieth minute, "after a determined effort to get himself sent off" (to quote the League Express match report). I can fully understand referees not wanting to be blamed for ruining a game when a player is sent off and later found not guilty, but I fear the effect is to give licence to the thugs in the game, especially in a big game. The solution perhaps is a policy of longer sentences for those found guilty after being reported.

Many of us are familiar with the Crystal Palace environment, from the two seasons when we seemed to play London Crusaders every other week. But I can't say I have ever been to the Barnet Cophal Stadium. However, I have heard of an exiled Roughy who recently discovered why it doesn't attract huge crowds. On a sunny April Sunday, she decided to go to watch London Broncos play Hull KR travelling on public transport from Brixton, in South London. Leaving home 2 hours before kick off time, she arrived 20 minutes late, and then arrived home just after 7pm! It is

very much to be hoped that the Super League London side find a new central location, quickly. The prospect of the annual withdrawal symptom probably beginning after next Sunday is not a happy one. It will seem a very long time to late August, I must say. So perhaps it is time to have a brief look back over the season, and assess performances. Initial playing objectives were First Division security reasonably early, which was virtually achieved with 15 point by New Years Day, a decent cup run, which was certainly achieved and possibly a top eight place, which, at the time of writing seems not quite likely, but very nearly so. The biggest disappointment? Surely, the disappointing level of attendances at Watersheddings. Whilst as always being appreciative of the regular support of the reliable 2,500 or so the club must be desperate to know what the missing potential few thousand really want. My personal highlight? The performance match in, match out, of Gary Lord and Joe Faimalo as a second row pair. And hope for next season? Initially a decently constructed fixture list. Have a good summer! ”

## REFLECTIONS

I recently wrote about the G.B. Rugby League tour down under in 1946, which became known as the Indomitable's Tour, as the team sailed to Australia on H.M. Aircraft Carrier, H.M.S. Indomitable, and of the dramatic last Test, which the Lions won, despite injury problems. But even that was not as dramatic as the one on the 1914 tour, which became known as the "Rorkes Drift" Test match. You may wonder why it was called that, well for once in a while, the Australian press were full of praise for the Lions team that won that final Test and the ashes. The hero was the great Huddersfield centre, and tour captain, Harold Wagstaffe, who not only by word, but by deed, inspired and rallied his men to victory. One newspaper likened the heroes to the famous battle of "Rorkes Drift" in South Africa in January 1879, when a small British army contingent, 2 officers and 88 men, repulsed 4,000 fierce Zulu warriors, and the name has stuck ever since in the history of our game. It is typical of the Aussies to arrange hard matches for touring teams just before a Test match, but despite objections from the G.B. tour

manager, Mr. Joe Clifford (Hudds), the Aussies insisted that match arrangements went ahead. On June 27th they played the first Test, which G.B. won 23pts to 5, but the tourists lost 4 players injured. The 2nd Test was due to be played 2 days later on the Monday June 29th, Mr. Clifford objected because of the teams injury problems but the Australians insisted the match should go ahead. This was ridiculous but it was played and G.B. lost 12pts to 7. The final Test was arranged for the end of July but after their 2nd Test victory, and interest at a fever pitch, the Australians had the audacity to ask that the final Test be brought forward to the following Saturday, July 4th. Mr. Clifford disagreed, with 2 more players injured in the last Test he had problems, but the Australians were not satisfied, they obviously wanted to take advantage of the injury situation and they cabled the Northern Union H.Q. in Leeds asking for their agreement. They called a special management committee meeting, who agreed to it, they then sent a telegram to Mr. Clifford which stated, "England expects that every man will do his duty,

Good Luck, all England awaits the result." When the players assembled before the match it was found that no fewer than 7 were unfit to play, and the team had to take the field with 3 players carrying injuries, and would not under normal circumstances have played, these were Frank Williams - winger (Halifax) - he had to have his ankle strapped up (he only played 2 minutes), Percy Coldrick - prop forward (Wigan) - needed packing on his bruised ribs (what guts) and Alf Wood - full back (Leeds) - had a broken nose. Some of the other players were suffering from knocks. As kick-off time approached, Mr. Clifford gave a stirring address to the team, it has never been quoted what he actually said but captain Harold Wagstaffe wrote later that every player's eyes filled with tears and they went out determined to make history, and they did, against all odds, they won 14pts to 6, finishing the match with only 10 men. The story of their backs to the wall fight will have to wait until the next programme. With the courage shown on the rugby field, no wonder we won the First World War, which broke out the following August.

(To be continued.)  
George Lunn.



# TRY AGAIN!

VAUX SAMSON - ITS STRENGTH IS ITS TASTE

# STATISTICALLY SPEAKING 1994-95

## THE IKE SOUTHWARD STORY - 'IKE'

A biography of Workington Town and Great Britain rugby league player, Ike Southward, is being written by Cumbrian RL enthusiast and newspaper and magazine editor, Keith Richardson, and will be published in the first week of September this year.

A limited number of 1000 copies of the book 'Ike' will be printed in an initial print run.

The book, in large A4 format, will consist of 100 pages and will be rich with stories of Ike's upbringing in Ellenborough to his heroic days as Town's flying winger; his record breaking transfers to and from Oldham and his achievements with Great Britain, especially the dramatic Battle of Brisbane on the 1958 tour, arguably the most memorable Ashes Test match of all time.

The quality book, which will contain a fascinating collection of photographs in full colour and in black and white, will retail at £11.99. However, the book can be ordered now at a special subscription discount price by sending £10 to Mr R B Viney, Bridge End House, Old Hutton, Kendal, Cumbria LA8 0NH. Cheques should be made payable to 'Ike Southward Book'.

NEW CLUBCALL NUMBER: 0891 122 722

DATE	OPPONENT	K.O	Res	1	2	3	4	5	6	7	8	9	10	11	12	13	14	15
AUGUST																		
21st	<b>Halifax</b>	3.00	L 20-40	Gibson	Jones	Irwin	Abram T	Ranson	Gartland G6	Crompton	Sherratt	Clarke	Parr	Lord	Davidson	Kuiti	Richards T	Heslop
28th	Bradford Northern	3.00	L 14-36	Gibson T	Jones	Irwin	Abram	Ranson	Gartland G1	Crompton	Sherratt	Clarke	Parr	Lord	Davidson	Kuiti	Richards T2	Heslop
SEPTEMBER																		
4th	<b>Wigan</b>	3.00	L 58-10	Gibson T	Jones	Irwin T	Abram	Ranson T	Gartland G1	Crompton T	Sherratt	Clarke	Richards	Lord	Davidson	Kuiti	Parr	Topping
SEPTEMBER																		
11th	Warrington	3.00	L 55-6	Heslop	Jones	Irwin	Abram	Ranson	Gartland G1	Crompton T	Sherratt	Clarke	Parr	Lord	Davidson	Kuiti	Richards	Faimalo
18th	<b>Doncaster</b>	3.00	W 44-8	Heslop T	Jones	Irwin T	Abram T	Ranson	Topping T 6g	Crompton 2T	Sherratt	Clarke	Parr	Lord T	Faimalo T	Kuiti	Richards	Gartland
25th	Hull	3.15	W 21-17	Heslop	Jones T	Irwin	Abram ZT	Ranson	Topping 4g	Crompton 1dg	Sherratt	Clarke	Faimalo	Lord	Green	Kuiti	Gartland	Davidson
OCTOBER																		
2nd	<b>St. Helens</b>	3.00	D 18-18	Heslop	Jones T	Irwin	Abram	Ranson	Topping 5g	Crompton	Sherratt	Clarke	Parr	Lord T	Faimalo	Kuiti	Gibson	Temu
9th	Wakefield Trinity	3.30	L 16-21	Heslop	Jones	Irwin	Abram	Ranson	Topping 3g	Crompton T	Sherratt	Clarke	Temu	Lord	Faimalo	Kuiti ZT	Davidson	Gibson
14th	<b>Widnes (BSKYB)</b>	7.30	W 29-0	Gibson	Jones	Irwin T	Abram T	Ranson T	Topping 4g	Crompton TDg	Sherratt	Clarke	Parr	Lord T	Faimalo	Kuiti	Heslop	Temu
30th	<b>Featherstone Rovers</b>	3.00	L 10-20	Gibson	Jones	Irwin	Abram T	Ranson	Topping 3g	Crompton	Sherratt	Clarke	Temu	Faimalo	Lord	Kuiti	Heslop	Parr
NOVEMBER																		
6th	Halifax	3.00	L 34-8	Gibson	Heslop	Irwin	Abram T	Ranson	Topping	Crompton	Sherratt	Clarke	Temu T	Lord	Faimalo	Kuiti	Jones	Norman
22nd	<b>Bradford Northern</b>	7.30	W 32-12	Gibson 2T	Jones	Irwin	Abram 2T	Ranson	Topping 3g	Crompton 2dg	Sherratt	Clarke T	Temu	Lord T	Faimalo	Kuiti	Green	Bradbury
27th	Wigan	3.00	L 46-0	Gibson	Jones	Irwin	Abram	Ranson	Topping	Crompton	Sherratt	Clarke	Temu	Lord	Faimalo	Kuiti	Green	Bradbury
DECEMBER																		
4th	Hull K.R. (RT Rd2)	3.00	W 28-0	Gibson	Jones T	Irwin T	Abram CT	Ranson CT	Topping 4g	Crompton	Sherratt	Stephenson	Temu	Lord	Faimalo T	Kuiti	Green	Bradbury
11th	<b>Warrington</b>	3.00	W 52-22	Gibson	Jones	Irwin	Abram T	Ranson T	Topping 2T 8g	Crompton T	Sherratt	Stephenson	Temu	Lord	Faimalo	Kuiti T	Marsh T	Green ZT
18th	Widnes (RT Rd3)	3.00	L 6-20	Gibson	Jones	Irwin T	Abram	Ranson	Topping g	Crompton	Sherratt	Clarke	Temu	Faimalo	Lord	Kuiti	Marsh	Green
26th	Salford	3.00	W 16-12	Gibson	Belle T	Irwin	Abram	Ranson	Topping 4g	Crompton T	Sherratt	Clarke	Temu	Lord	Faimalo	Kuiti	Marsh	Davidson
JANUARY																		
1st	<b>Workington Town</b>	3.00	W 20-10	Gibson	Belle	Irwin	Abram	Ranson 3T	Topping 2g	Crompton	Sherratt	Clarke	Temu	Lord	Faimalo	Kuiti IT	Gartland	Davidson
8th	<b>Leeds</b>	3.00	L 14-21	Gibson	Belle	Irwin IT	Abram	Ranson	Topping IT 3g	Crompton	Sherratt	Clarke	Temu	Lord	Faimalo	Kuiti	Marsh	Parr
22nd	<b>Sheffield Eagles</b>	3.00	L 12-14	Gibson	Belle	Irwin	Abram	Ranson IT	Topping 2g	Crompton T	Sherratt	Clarke	Temu	Lord	Faimalo	Kuiti	Bradbury	Green
FEBRUARY																		
5th	<b>Hull</b>	3.00	W 19-14	Gibson	Belle	Topping G	Abram T	Ranson	Marsh 4g 1dg	Crompton T	Sherratt	Stephenson	Temu	Lord	Faimalo	Kuiti	Irwin	Green
11th	Bramley (S.C.C.C. Rd 4)	3.00	W 70-10	Gibson ZT	Belle T	Topping T	Abram ZT	Ranson ZT	Marsh 7T 1g	Gartland ZT	Norman	Stephenson	Temu	Green	Faimalo	Kuiti	Irwin	Davidson IT
15th	Doncaster	7.30	W 22-14	Gibson T	Jones	Kuiti T	Abram	Belle	Marsh 7g	Gartland	Sherratt	Stephenson	Temu	Faimalo	Davidson	Green	Lord	Norman
19th	St. Helens	3.00	L 22-32	Gibson	Belle	Topping	Abram	Ranson ZT	Marsh 3g	Gartland T	Norman	Stephenson	Temu	Lord	Faimalo	Kuiti	Crompton	Davidson
25th	Warrington (S.C.C.C. Rd 5)	3.00	W 17-6	Gibson	Belle	Topping	Gartland DG	Ranson T	Marsh 4g	Crompton	Norman	Stephenson	Temu	Lord	Faimalo T	Kuiti	Green	Davidson
MARCH																		
5th	<b>Wakefield Trinity</b>	3.00	L 10-12	Gibson	Belle	Topping	Gartland	Ranson T	Marsh 3g	Crompton	Norman	Stephenson	Temu	Lord	Faimalo	Kuiti	Hill	Davidson
12th	<b>Huddersfield (Silk Cut Rd 6)</b>	3.00	W 23-12	Gibson (DG)	Belle	Topping (T)	Abram	Ranson	Marsh 5g	Crompton ZT	Sherratt	Stephenson	Temu	Lord	Faimalo	Kuiti	Gartland	Davidson
15th	Castleford	3.00	L 14-35	Gibson (T)	Belle	Topping	Abram	Ranson										
19th	Widnes	3.00	L 4-40	Gibson	Belle	Topping	Abram	Ranson	Marsh T 3g	Crompton	Sherratt	Stephenson	Temu	Lord	Faimalo	Kuiti	Neal	Davidson
25th	<b>Wigan (Silk Cut Semi Final)</b>	3.00	L 20-48	Gibson	Belle (ZT)	Topping	Abram	Ranson	Marsh 2g	Crompton	Sherratt	Stephenson	Parr	Lord	Faimalo	Kuiti	Neal	Davidson
APRIL																		
2nd	Leeds	3.30	L 20-40	Gibson	Belle	Topping	Neal (T)	Jones	Marsh 2g	Crompton	Sherratt T	Stephenson	Temu	Lord	Faimalo	Kuiti	Richards	Bradbury T
9th	Sheffield Eagles	3.15	W 17-12	Gibson	Belle (T)	Topping (T)	Neal	Jones (T)	Gartland 2g	Crompton	Sherratt T	Clarke	Temu	Lord	Faimalo T	Bradbury	Abram	Kuiti
14th	<b>Salford</b>	3.00																
17th	Workington Town	3.00																
23rd	Featherstone Rovers	3.30																

HOME FIXTURES ARE DENOTED IN BOLD CAPITAL LETTERS

### CLASSIQUE JEWELLERS PLAYER OF THE MONTH MERIT AWARD

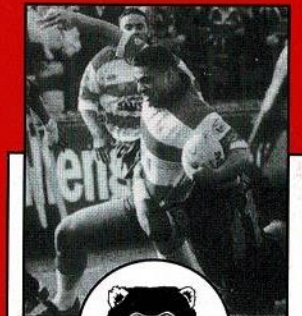
OLDHAM V WIGAN	
BELLE	5
LORD	3
BRADBURY	1

### CLASSIQUE JEWELLERS PLAYER OF THE MONTH MERIT AWARD

LEEDS V OLDHAM	
LORD	5
JONES	3
NEAL	1

### CLASSIQUE JEWELLERS PLAYER OF THE MONTH MERIT AWARD

HUDDERSFIELD V OLDHAM	
CROMPTON	5
GIBSON	3
FAIMALO	1



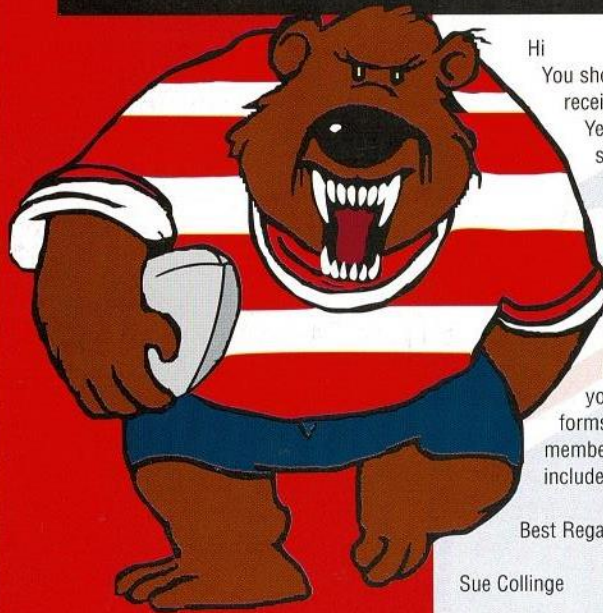
MARCH'S PLAYER OF THE MONTH  
**JOE FAIMALO**  
Once again congratulations to Joe, totally deserved he has had a terrific season.

### CLASSIQUE JEWELLERS PLAYER OF THE YEAR AWARD

Present Positions	
KUITI	50
CROMPTON	46
FAIMALO	27

# JUNIOR ROUGHYEDS

## CALLING ALL JUNIOR ROUGHYEDS



Hi  
 You should by now all have received your Player of the Year forms, along with some tickets for the End of Season Draw. Please help the main body to raise funds by selling your tickets, and if you can sell any more you can contact me on 061 681 3397. Do not forget to return your Player of the Year forms, complete with your membership number, to be included in our Prize Draw.

Best Regards

Sue Collinge

### SUPPORTERS CLUB

Tickets have now been posted for our End of Season Draw. Anyone who feels they can help us raise funds by selling more tickets, please contact Alice on 061 633 6780 or see any Supporters Club Official at today's game. We would like to take this opportunity to thank everyone who has helped the Supporters Club over the past 12 months.

Regards

Alice Colligne (Chairperson)

## ACADEMY UPDATE

### ROCHDALE DESERVING WINNERS

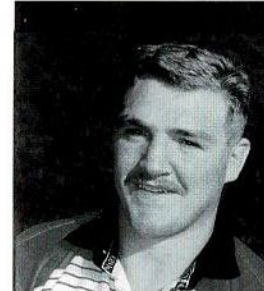
Our Academy team lost in the Championship against Rochdale Hornets in a very disappointing second half performance. We got off to a flying start, going into a twelve points to nil lead, and at that stage

were looking very confident. We then lacked concentration and conceded two bad defensive tries which lifted Rochdale and our heads dropped. Rochdale went on to finish deserving winners. We had outstanding

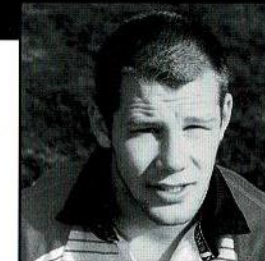
displays from Billy Tindall and Jimmy Cowans and up to him getting injured my man of the match, Lee Wilde. Our tries were scored by Lee Wilde and Wayne Ridings and two goals from stand off, Richard Badby.

NEW CLUBCALL NUMBER 0891 - 122 772

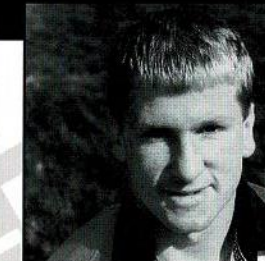
# PLAYER SPONSORSHIP



IAN SHERRATT  
 Bill & Brenda Rogers



JOHN CLARKE  
 Arc Electrical



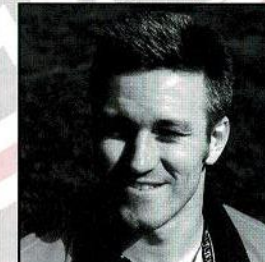
MARTIN CROMPTON  
 Charleswood Bedrooms



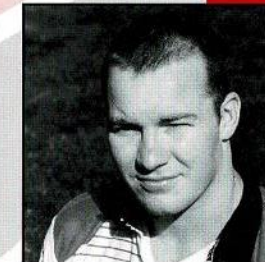
WALLY GIBSON  
 Specsavers



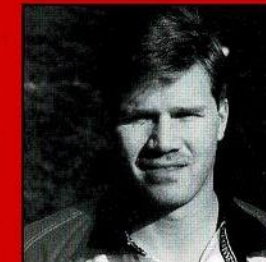
SHAUN IRWIN  
 Shaun & Pat Whelan



NIGEL HESLOP  
 Alex Hammond



CHRIS PARR  
 Irene & Helen Calow



DARREN ABRAM  
 COCKFIELD FARM

## WE'VE CURED HEADACHES FOR THE ROUGHYEDS



Manufacturers of upholstery fillings for over a century, Platt & Hill make foam and fibre fillings of the highest quality right here in Oldham.

So reliable are our products, that Oldham RLFC have selected them to cushion the uprights of their goal posts.

In a way, you see, we've prevented headaches all round!

**PLATT & HILL**  
 FOAM AND FIBRE FILLINGS

FIBRE FILLINGS DIVISION:  
 Belgrave Mill, Keswick Avenue,  
 Oldham, Lancs OL8 2LZ  
 Tel: 061-626 4638, Telex: 669550,  
 Fax: 061-627 3265.

NEW CLUBCALL NUMBER 0891 122 772