

**OLDHAM RLFC**

- 1 PAUL ATCHESON
- 2 ROB MYLER
- 3 PEUAFI LEULAI
- 4 DARREN ABRAM
- 5 SCOTT RANSON
- 6 FRANCIS MALONEY
- 7 MARTIN CROMPTON
- 8 IAN SHERRATT
- 9 STEVE GARTLAND
- 10 JASON TEMU
- 11 PAUL DAVIDSON
- 12 GARY LORD
- 13 HOWARD HILL
- 14 JOE FAIMALO
- 15 WALLY GIBSON
- 16 ADRIAN BELLE
- 17 CHRIS McKINNEY

**CASTLEFORD**

- 1 GRAHAM STEADMAN
- 2 CHRIS SMITH
- 3 JASON FLOWERS
- 4 ADRIAN FLYNN
- 5 SIMON MIDDLETON
- 6 TONY SMITH
- 7 GARETH STEPHENS
- 8 LEE CROOKS
- 9 COLIN MASKILL
- 10 DEAN SAMPSON
- 11 NATHAN SYKES
- 12 BRENDAN TUUTA
- 13 TAWERA NIKAU
- 14 ANDREW SCHICK
- 15 LEE HARLAND
- 16 IAN SMALES
- 17 TONY MARCHANT

**TODAY'S SPONSORS**

MATCH SPONSOR  
HYDE PRECISION

BIG MATCH SPONSOR  
SPEEDYHIRE (Oldham)

MAN OF THE  
MATCH SPONSOR  
HOLLINWOOD WELDING

PROGRAMME SPONSOR  
MASON COMMUNICATIONS

TEAM SPONSOR  
DON YATES

MATCHBALL SPONSOR  
BROWNS COLOUR  
PRINTERS

PENALTIES	1	2	3	4	5	SCRUMS	1	2	3	4	5
	6	7	8	9	10		6	7	8	9	10
	11	12	13	14	15		11	12	13	14	15
	16	17	18	19	20		16	17	18	19	20
	21	22	23	24	25		21	22	23	24	25

**OFFICIAL CLUB SPONSOR**



**TONIGHT'S OFFICIALS**

R E F E R E E  
D CAMPBELL ■

T O U C H J U D G E S  
R S O U T H W A R D ■

B S H A R R O C K ■

PENALTIES	1	2	3	4	5	SCRUMS	1	2	3	4	5
	6	7	8	9	10		6	7	8	9	10
	11	12	13	14	15		11	12	13	14	15
	16	17	18	19	20		16	17	18	19	20
	21	22	23	24	25		21	22	23	24	25



RUGBY LEAGUE  
CENTENARY  
1895 - 1995

**Official Club Sponsor**



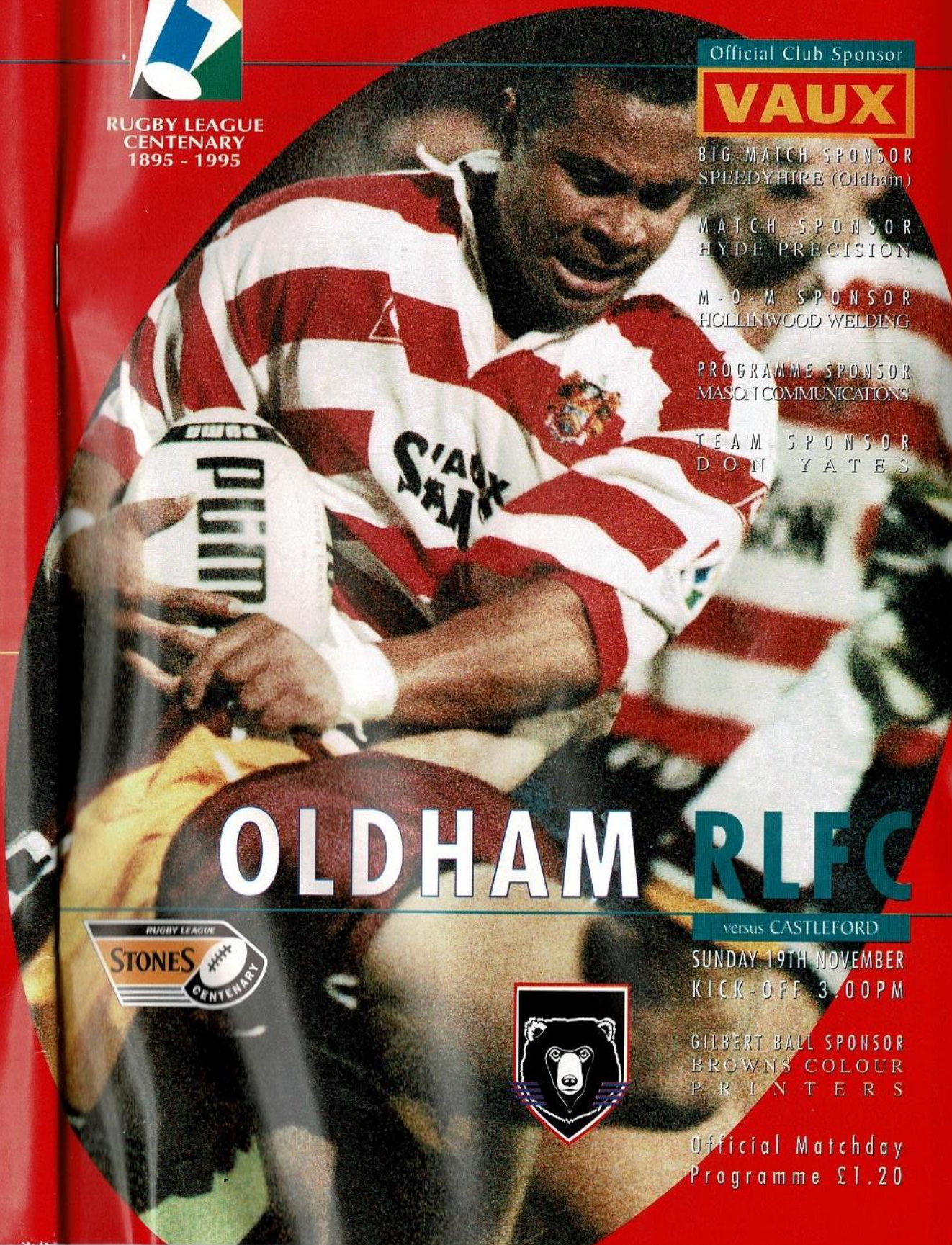
BIG MATCH SPONSOR  
SPEEDYHIRE (Oldham)

MATCH SPONSOR  
HYDE PRECISION

M - O - M SPONSOR  
HOLLINWOOD WELDING

PROGRAMME SPONSOR  
MASON COMMUNICATIONS

TEAM SPONSOR  
DON YATES



**OLDHAM RLFC**

versus **CASTLEFORD**

SUNDAY 19TH NOVEMBER  
KICK-OFF 3.00PM

GILBERT BALL SPONSOR  
BROWNS COLOUR  
PRINTERS

Official Matchday  
Programme £1.20



# ROLL OF HONOUR



Club Secretary: Karen Scott  
 Commercial Manager: Roy Hill  
 General Manager: Terry Donovan  
 Hon Doctors: Dr. G. Radcliffe, Dr. D. Atherton  
 Dental Surgeon: Mr. N. Gibbison  
 Physiotherapists: Mr. N. Hodgson,  
 Assistant Physiotherapist: Mr. J. Watkins  
 Coach: Andy Goodway  
 Football Manager: Alan McCurrie  
 Alliance Coach: Graham Beale  
 Academy Manager: Brian Gartland  
 Hon. Consultant Orthopaedic Surgeons:  
 Mr. D. Walker  
 Official Timekeeper: Mr. J. Roscoe  
 Hon. Safety Officer: Roger Norris  
 Programme Editor: Roy Hill  
 Photos courtesy of The Oldham Evening Post  
 Comments in this programme are not necessarily the clubs.

## MARIO'S PIZZERIA & TRATTORIA



*We like to feed a  
 winning team for the  
 best pizza's & pasta  
 in town, call in and  
 try us.*

*Just like Oldham Rugby we are No.1.*

125 Yorkshire Street, Oldham.  
 Telephone: 0161-624-6923

OLDHAM HOTLINE 0891 44 00 70

The Pavilion, Watersheddings, Oldham

Telephone: 0161 652 5244 &  
 0161 624 4865

Chairman: Jim Quinn  
 Directors: John Chadwick, Roger Norris, Mike Winterbottom

### CLUB HONOURS

- Rugby League Championship Play-off Winners**  
1909-10, 1910-11, 1956-57
- Runners Up**  
1906-07, 1907-08, 1908-09, 1921-22, 1954-55
- First Division Champions**  
1904-05
- Second Division Champions**  
1963-64, 1981-82, 1987-88
- Rugby League Challenge Cup Winners**  
1898-99, 1924-25, 1926-27
- Runners Up**  
1906-07, 1911-12, 1923-24, 1925-26
- Lancashire Cup Winners**  
1907-08, 1910-11, 1913-14, 1919-20, 1924-25, 1933-34, 1956-57, 1957-58, 1958-59
- Runners Up**  
1908-09, 1911-12, 1918-19, 1921-22, 1954-55, 1966-67, 1968-69, 1986-87, 1989-90
- Lancashire Championship Winners**  
1907-08, 1909-10, 1921-22, 1956-57, 1957-58
- Runners Up**  
1908-09, 1910-11, 1911-12, 1919-20, 1923-34, 1954-55
- Lancashire Shield Winners**  
1975-76, 1979-80
- Colts Premiership Trophy**  
1979-80, 1989-90
- Second Division Premiership**  
1987-88
- Wigan Sevens Winners**  
1991-92

### CLUB RECORDS

- Record Victory:** 67-6 v Liverpool City April 1959
- Record Defeat:** 11-67 by Hull K.R. September 1978
- Record Attendance:** 28,000 v Huddersfield 24th February 1912
- Record Receipts:** £37,505.50 v Wigan 5th October 1989
- Record Transfer:** £70,000 to Halifax for Tony Anderson March 1990
- Record Try:** Ref Farrar, 49 Tries, 1921-22 season
- Record Goal:** Bernard Ganley, 224 goals, 1957-58 season
- Record Point:** Bernard Ganley, 28 points v Liverpool City, April 1959
- First Game:** 21st October 1876 v Stalybridge
- Highest Number of Points Scored:** Bernard Ganley, 2,881
- Most Appearances:** Joe Ferguson, 685 Pre 1900 Jack Hirst 233 Since 1900
- Most Tries:** Alan Davies 182

# BOARDROOM TALK

BY OLDHAM RLFC CHAIRMAN JIM QUINN



Results this season have not gone as we would have liked, culminating in our Regal Trophy defeat at Widnes last Sunday. On the same day Castleford, our opponents today, suffered a shock trophy defeat against Carlisle up in Cumbria.

What have Oldham and Castleford got in common? Andy Goodway and John Joyner, the respective coaches, both spent the month of October with England's World Cup squad as assistant coaches.

Just what affect that had, if any, on team performances since the domestic game emerged from World Cup hibernation is impossible to gauge, but it is a fact that both clubs have struggled since league football started up again (these notes were written before Castleford look on Wigan in midweek).

In Oldham's case, we have also been ravaged by injury and while one doesn't like to carry on looking for reasons why we haven't been performing too well it is a fact that when you have as many senior players out of action as we have had in recent weeks the performance is bound to suffer.

When you are playing badly, everyone is on a downer, spectators, players, coaches and club officials. It has been a bad time, I know, but I hope our followers will recognise the overall progress we have made as a club in the last four years and try and accept that there are bound to be hiccups along the way.

Less than four years ago we were in the old second division, with debts of £1.4 million and staring bankruptcy in the face.

Those were the days of Peter Tunk's wheeler-dealer deals and the outgoing transfers we were forced to make just to keep the club's financial head above the water.

Despite all this we won promotion and stayed in the first division at the first time of asking, making difficult decisions along the way when Bob Lindner took over the reigns from Peter in midseason.

Peter had done a big job for Oldham and I shall forever be grateful to him for helping us through the years of crisis. The decision to give Bobbie Lindner his head also proved a right

one and the team acquired enough points to stay up.

At the end of that season we lost several good players, not least Lindner himself and Andy Goodway, who decided to hang up his playing boots to concentrate on his new career in coaching.

Again, we were written off by many pundits, but we finished in tenth place and earned our place in Super League on merit.

Those of us who had burnt the midnight oil during the dark days of second division rugby and one financial crisis after another would never have dreamed that, three years on we would be up there with the cream of the English game looking forward to Super League.

While all this was going on on the field, we were battling hard to face up to our mounting debts and get them under control. We achieved this and also emerged from the negotiations looking forward to a move into a brand new stadium which is essential to meet the criteria of the 'Framing the Future' document and thus meet the criteria of Super League.

We have moved mountains on behalf of Oldham Rugby in the past year or two and we can move more mountains in the future to establish the club in Super League. The problem is that we are currently going through a flat spell and yes, I am disappointed at the poor gates we are getting, but I am not knocking the stay away fans, just trying to persuade them to give us their support at a time when we desperately need it.

I know we haven't been playing well, but how many clubs would love to be in our position as we look forward to Super League and to moving in to a new home with modern, up to date facilities for players, spectators, sponsors alike.

Even though we have struggled this season, isn't it worth supporting a club that is heading for brighter things and a future with the game's elite? It is only by receiving that support that we can get the finance to enable us to make a real go of it.

As chairman I want to place on record that club's gratitude to those 2,000 or so fans who

stick with us through thick and thin and who will one day reap the benefits of Super League rugby knowing that they did their bit for the club when it was most needed.

At the same time I hope that, between us, we can cajole a few more spectators to join us in the knowledge that there is such a lot to look forward to even if it isn't forth coming just at present.

Our injuries were so extreme that when we went to Sheffield we had a trialist prop on the bench because there were no other props available. It really was a desperate situation, but we are working through it and all the news we get from the medical room is that we are now over the worst and looking forward to a much brighter picture in the run up to Christmas.

In the meantime, we welcome constructive criticism from the terraces and we appreciate that many people have a lot of good ideas that can be put to good use. So keep those constructive letters flowing, either to the club or to the Chronicle, and I can assure you that they will all the read and digested.

Please appreciate though, that we are just as sick as everyone else when results and performances are below par, that we do have a pretty good idea of what we are doing (even though you might not always think so) and that we do work all all times in the best interests of the club.

Finally, a warm welcome to everyone from Castleford. We have a good relationship with the people from Wheldon Road. As ever, they are warmly welcome to Watersheddings. Enjoy the football.



*Quality without compromise*

Patterson & Rothwell Ltd

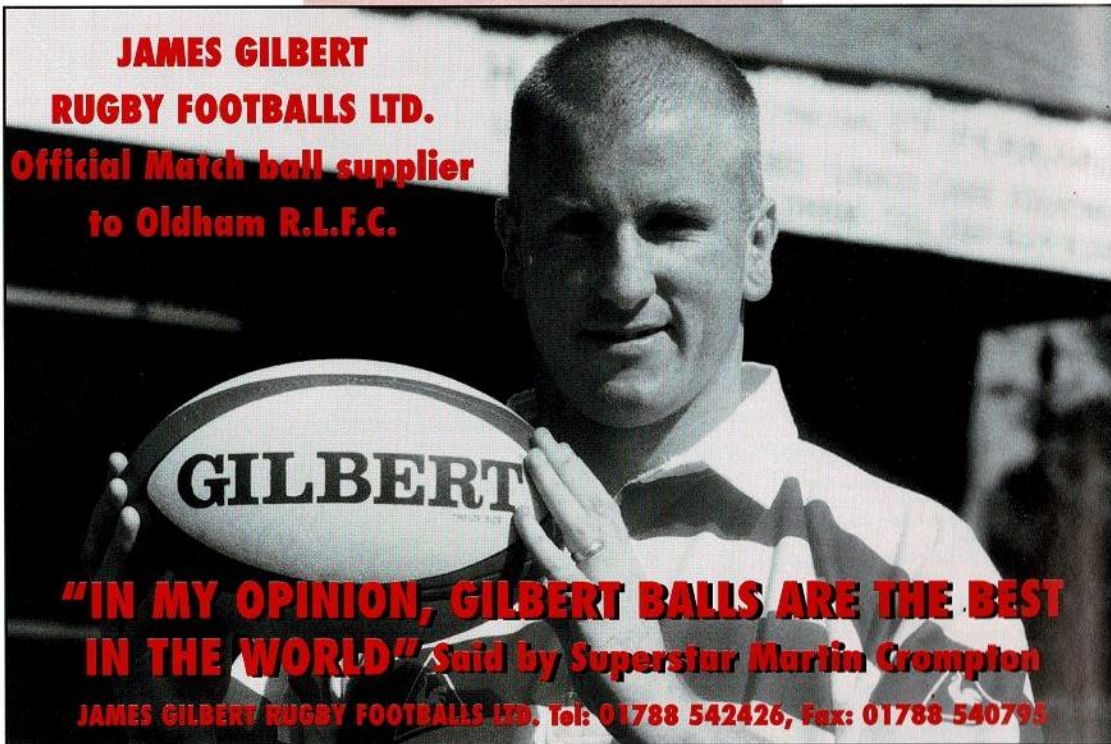
---

**PRECISION Toolmakers & Injection MOULDERS**

Tel: 0161 620 0292 Fax: 0161 627 0916

OLDHAM HOTLINE 0891 44 00 70

**JAMES GILBERT**  
**RUGBY FOOTBALLS LTD.**  
**Official Match ball supplier**  
**to Oldham R.L.F.C.**



**"IN MY OPINION, GILBERT BALLS ARE THE BEST IN THE WORLD" Said by Superstar Martin Crompton**  
**JAMES GILBERT RUGBY FOOTBALLS LTD. Tel: 01788 542426, Fax: 01788 540795**

**KIT SUPPLIERS**



**le coq sportif®**

OLDHAM HOTLINE 0891 44 00 70

**JASON FLOWERS**

A local product who graduated through the clubs Academy team, Jason has proved himself at first team level and will be looking to clinch a regular spot this season. Earned GB Academy representative honours in the 1994 tour of Australia and is tipped by some good judges to gain senior representative honours.

**CHRIS SMITH**

One of the clubs very promising youngsters, Chris broke into the first team two seasons ago and has proved a very capable replacement for St. John Ellis. A local product who came from the Academy team, gaining Great Britain honours at that level including a tour to Australia in 1994. Chris subsequently stepped up a further rung and won Gt Britain Under 21 honours last season.

**ADRIAN FLYNN**

Another signing from neighbours Wakefield, Adrian, who was a former Dewsbury junior player joined Castleford in a deal that cost the club a fee of £70,000 plus winger Jon Wray. A Great Britain Under 21 cap and Academy tourist, Adrian has proved himself in both the centre and second row positions.

**TONY SMITH**

A key utility player, Tony has the ability to slot into either half back position as well as centre where he has played much of his early first team rugby. Last season he slotted into the scrum half role on a regular basis where he looked very impressive. His form led to a trip to Australia with the Great Britain "Sevens" squad and his first full international cap for England to add to GB under 21 honours. A local product, Tony's great support play brings him a regular flow of tries.

**GARETH STEPHENS**

A close season signing last year, Gareth returned to his junior roots at Cas having started out his professional career with Leeds. Despite gaining GB under 21 honours Gareth was unable to secure a regular slot at Headingley and Cas moved in to secure his signature when their scrum half spot became vacant. Keen to prove himself at the club where his father did so well Gareth was unlucky in his first term when he suffered with injury. The new qualification rules paved the way for Welsh representative honour for him, touring the USA in the summer and gaining a place in the Wales World Cup squad.

**LEE CROOKS**

Club captain, pack leader and goal kicker, Lee was another buy from the Leeds club. He quickly became a key figure at Castleford and in turn his representative career was resurrected, with county and Test call ups being added to an already healthy total of such honours. Lee started his career on his native Humberside, where he gained a string of honours whilst still a teenager, and despite not settling too well at Headingley his Hull and Cas

form has ensured that he remains one of the games biggest names.

**COLIN MASKILL**

A local product who started his professional career with Wakefield Trinity before having a long spell with Leeds and then a season with Doncaster. Colin has been unlucky not to gain representative honours but Cas were glad to bring his experience to the club when injury ruled out Richard Russell for the season.

**NATHAN SYKES**

A highly rated junior player from the Moldgreen Club in Huddersfield, Nathan is making good progress as he establishes himself in the senior squad. Castleford beat off a host of opposition to sign him and his promise is being realised with Academy international and tourist honours and a GB Under 21 cap already.

**IAN SMALES**

A capture two years ago from neighbours Featherstone, Ian immediately established himself in the Cas second row as a very dependable player. A Gt Britain tourist Ian has switched from the back division to the pack but still has an eye for the tryline, reaching double figures in his first season at the club. Originally with Castleford amateurs Lock Lane before joining Rovers, Ian missed much of last season with a broken arm when his work rate was badly missed.

**GRAHAM STEADMAN**

Castleford's club record signing, Graham joined the club from near neighbours Featherstone in a £170,000 deal six seasons back. Previously with York he has been a consistent points scorer throughout his career. Having gained representative honours at stand off a switch to full back took Graham to even further success including a starring role on the last GB tour to Australia. Last season saw Graham in good form and he added to his Test caps against the Aussie tourists.

**SIMON MIDDLETON**

Simon switched codes after a long career in local Rugby Union and has settled very well to League after his move from Knottingley R.L. He has been a regular try scorer for Cas and although normally a wingman he has provided versatility by switching round the backline when called upon.

**DEAN SAMPSON**

Yet another Cas player with GB under 21 honours. Dean added a tour call up as a late replacement to the party in New Zealand to his honours a couple of years ago. Made the grade as a full international in the recent Halifax Centenary World Cup where his grit and determination were on show for all to see. A product of Stanley ARLFC Dean is extremely popular with the Wheldon Road faithful.

**LEE HARLAND**

A product of Drighlington ARL, Lee turned

professional with Leeds, but with first team opportunities limited he moved on to Halifax. A GB Under 21 international he joined Cas in exchange for Martin Ketteridge when Halifax were looking for an experienced prop and has continued to develop his early promise.

**ANDREW SCHICK**

The clubs latest capture from Australia. Andrew has joined Cas from Brisbane league team Redcliffe. A ball handling back rower, Andrew was spotted by coach John Joyner on a summer trip 'down under' and was offered a chance to come over for the Centenary season and stake a place for the Super League.

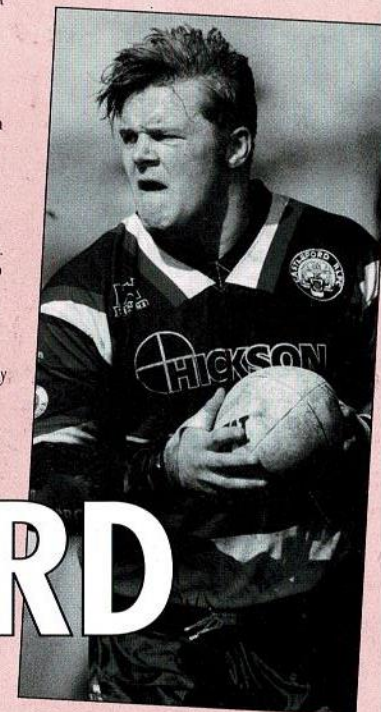
**BRENDON TUUTA**

New Zealand international who was signed this season from local rivals Featherstone. Brendon has Australian experience with Western Suburbs and last summer with the Perth Western Reds. His international career has taken in a tour of this country and the Trans Tasman Test series against Australia. He was in the Kiwi squad for the Centenary World Cup. Brendon had 5 years with Rovers and although primarily a back rower he has plenty of experience at stand off.

**TAWERA NIKAU**

Currently ranked amongst the worlds best loose forwards Tawera has proven his class in both the 1st Division and the Test arena with New Zealand. He has Australian experience with Canterbury-Bankstown, whilst Sheffield and York gave him experience before he linked up with Cas where he has proved an invaluable asset to the club. The past summer saw him guesting with the Cronulla club in Australia where he further enhanced his reputation with the Sharks.

Pictured below: Dean Sampson



**CASTLEFORD**

OLDHAM HOTLINE 0891 44 00 70

# Tackling the issues...



## on all fronts!

Employment and economic development, education, the environment, housing, recreation and culture, social services, roads and transport plus a good deal more!



Enquiries about Council services and policies to the Chief Executive's Department.  
Telephone 0161 911 4708

**L**ITTLE did I know, when I said at the start of the season that I would spread the work load around to assess the squad's strengths and weaknesses, that my hand would be forced because of an appalling injury list.

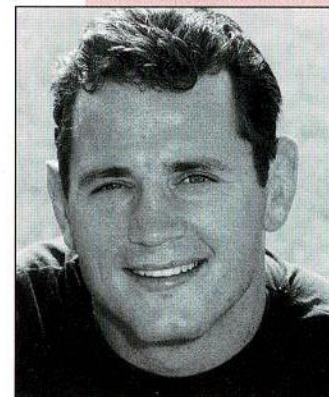
I don't think I have ever experienced so many injuries in all my career as player and coach.

I try not to look for excuses for our poor form in recent weeks, but there is no doubt that the continued absence of so many senior players has been a major factor.

If I had kept my big mouth shut at the start of the season when I talked about using the entire squad it would have happened anyway and people would have looked at the situation with far more compassion.

Luckily, things are starting to improve on the injury front and I would like to be judged not now, while we are playing under-strength in this

transitional season, but when we are at something like full strength and operating in the Super League. One of the brighter aspects of recent weeks has been the form of 19-year-old Jimmy Cowan. We signed Jimmy for a nominal fee and he has quietly been a revelation since we gave him his chance at senior level.



Sponsored by Sheila & Dennis Coupe

He has shown a terrific attitude and has worked hard in training. He has reaped the benefits by earning senior selection and he has done exceedingly well to grab his chance with both hands.

Following on from that, I am pleased with the more recent capture of another 19-year-old. Stand-off Craig Barker has joined us professionally from the Academy side and he has already done well in two Alliance appearances.

Craig could be just as successful as Jimmy if he applies himself in the same dedicated manner and I feel sure he will do just that.

Despite recent disappointments I am feeling much happier about the rest of the season now that the injuries are starting to clear.

And I remain convinced that when we have a full and fit squad from which to choose we will be fully competitive at the highest level.

ANDY GOODWAY

# ANDY GOODWAY

## LAWRENCE PERRINS & SONS LIMITED

ESTABLISHED 1947

176, Oldham Road, Springhead,  
Oldham. OL4 5SJ

Telephone: 0161 624 1723

Fax: 0161 624 3798

PLUMBERS - ELECTRICIANS  
HEATING ENGINEERINGS  
SECURITY SYSTEMS

## GAP STEEL TRADING LTD

LONDON HOUSE  
29A LONDON ROAD  
STOCKTON HEATH  
WARRINGTON  
WA4 6SG

TELEPHONE: 01925 601111

FAX: 01925 604000

MOBILE: 0836 600609

**"STEEL PARCELS AT  
TRADE PRICES"**

# OLDHAM RUGBY LEAGUE MERCHANDISE

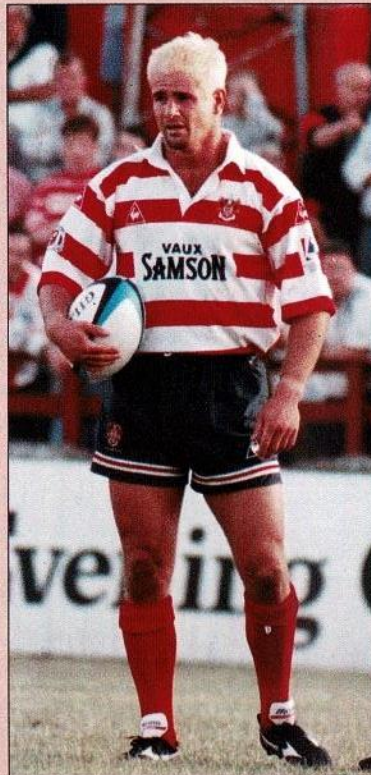
**HAVE YOU CHOSEN YOUR CHRISTMAS PRESENT YET! CALL INTO THE CLUB SHOP AND HAVE A LOOK AROUND! LOTS OF PRESENTS FOR ALL AGES!!!**

HOME REPLICAS adults .....	£37.99
HOME REPLICAS Juniors .....	£32.99
SHORTS (home & away) various sizes .....	£10.00
POLO SHIRTS .....	£15.99
SWEATSHIRTS .....	£25.00
SOCKS .....	£5.00
TRACK SUITS .....	£49.99
JACKETS .....	£49.99
WATERPROOFS .....	£39.99
HOLDALLS .....	£12.99
RUCKSACKS .....	£9.99
BOOTBAGS .....	£4.99
WATCHES .....	£29.99
DRILL TOPS .....	£29.99
FLEECE JACKETS .....	£34.99
BRONX HATS .....	£8.99
SCARVES .....	£5.00
TOWELS .....	£5.00
CANTERBURY SHIRTS .....	£15.00
BELTS .....	£15.00
FRAMED PRINTS .....	£25.00
PRINTS .....	£5.00

**JUST ARRIVED NEW LE COQ SWEAT SHIRTS**

**HAVE YOU SEEN OUR PERSONALISED WATCHES!  
CALL IN AND HAVE A LOOK. CLUB BADGE AND OUR BEAR LOGO.  
CHOOSE WHICH ONE YOU LIKE... A GREAT GIFT.  
LOADS MORE BARGAINS...**

**Open Monday to Friday 9am to 5pm. Saturday 10am to 1pm**



**TANFIELD (Oldham) Limited**

125 Chamber Road,  
Oldham,  
Lancashire.  
OL8 1AA  
Tel: 0161-633 4872  
0161-627 0435  
Fax: 0161-627 0448



**TANFIELD (Oldham) LIMITED**



**OLDHAM Rugby League Club**

*working together*

OLDHAM HOTLINE 0891 44 00 70

# COMMERCIAL CORNER

I would like to thank everyone who supported our Sportsmans dinner last Wednesday Night, the evening was a great success and we managed to raise nearly £3,000

We sent out our shareholder christmas draw tickets out last week and we are hoping that everyone tries to sell all there allocation. Anyone who wants more tickets please ring the office on 0161 620 4870 and we will deliver them to your home. Please make a special effort this year and help the club get a good start for the "Super League"



Oldham Chairman Jim Quinn seen here with Alex Givvons (who officially opened the "Hall of Fame") Alan Davies, Andy Goodway, Bob Irving (all in the Hall of Fame) presenting Jean Brooks the daughter of the late Joe Ferguson with a signed matchball.

The club would like to thank all the committee who worked very hard to make a great success of the "Hall of Fame" now housed in the Pavilion. Anyone who would like to visit the Hall of fame please contact the club to arrange a tour.

## BIRCH HALL HOTEL

Restaurant, Function Suites,  
Residential,  
Conference/Banqueting Facilities  
always available

Rhodes Hill, Lees, Oldham, OL4 5EB  
Tel: 0161 624 8875 & 0161 624 4391  
Fax: 0161 633 0854

## OUT OF THE BLUE... SOMEONE DRIVES INTO YOU

WE GUARANTEE TO GET YOU BACK ON THE ROAD WITHIN ONE HOUR

**DISCOUNT MOTOR SERVICES**

**for details  
PHONE FREE ON  
0800 132423  
NOW**

AVAILABLE NOW FROM  
ELLEN GARAGE

OLDHAM HOTLINE 0891 44 00 70



# McCarthy's Catering

CELEBRATING A WEDDING, ANNIVERSARY, 18TH, 21ST OR EVEN A SPORTSMEN DINNER, WE CAN OFFER AN EXTENSIVE SELECTION OF HOT AND COLD FOOD



COMMERCIAL ENQUIRIES VERY WELCOME

**01457 832607**

VALE MILL LODGE, HUDDERSFIELD ROAD, MICKLEHURST, MOSSLEY

*'Oldham Born ...*



*... and Read'*

OLDHAM HOTLINE 0891 44 00 70

# MEMORY MATCH

## Don Yates looks back to a match from yesteryear

Floodlit matches are quite common in modern rugby league with the televised Friday night 'Big League' game being a popular feature of our weekly diet of sporting entertainment. But it has not always been the case. In fact, floodlit rugby is a relatively modern phenomenon. The first recorded floodlit match took place in Broughton, Manchester way back in 1878 but it was not until the early 1950s that Bradford Northern and Leigh were the first clubs to introduce modern floodlighting systems. A lack of use caused those facilities to fall into disrepair and it was over ten years, in the mid sixties, that clubs became fully aware of the value of floodlights.

A number of clubs on this side of the Pennines erected floodlights in the early 1960s and so in the summer of 1965 the Rugby Football League announced that a Floodlit competition would be played on Tuesday evenings during the autumn with matches televised live on BBC2.

Sponsorship to the tune of £9,000 was obtained from BBC television with the winning club receiving £1,000. Eight clubs contested that inaugural Floodlit Cup competition. Each club played two matches, one at home and one away. The four clubs with the best scoring difference qualified for the semi-finals. Both Oldham and Castleford entered the tournament, Castleford's floodlights were switched on in September 1965 when they were the only club in Yorkshire to have lights. Oldham's lights were first used the following month.

Oldham did not fare too well in that inaugural tournament but Castleford were able to sneak into the semi finals in fourth spot. They drew 7-7 at home to Leeds and won 6-4 here at Watersheddings before the smallest crowd to watch a first team match at Oldham and the only one which

numbered less than 1,000. Castleford travelled to Widnes in the semi-finals and pulled off a superb 12-9 win. The other semi final saw St. Helens defeat Swinton 9-5. It was decided that Saints should stage the final and they were firm favourites to win having already pulled off a league double success over Castleford in the early weeks of the season. They had won 19-15 at Wheldon Road and 21-6 at home. Teams for this inaugural final at Knowsley Road were as follows:

St. Helens: Frank Barrow, Tom van Vollenhoven, Dave Wood, Billy Benyon, Len Killeen, Alex Murphy, Bob Prosser, Ray French, Bob Dagnall, Cliff Watson, Mervyn Hicks, John Mantle and Doug Laughton.  
Castleford: Derek Edwards, Colin Battye, Malcolm Battye, Ron Willett, Trevor Briggs, Alan Hardisty, Roger Millward, Abe Terry, Johnny Ward, Clive Dickinson, Bill Bryant, John Taylor and Peter Small.

The crowd of 11,510 saw Saints attack for long periods of this match but the Castleford defence was magnificent. Free scoring winger Len Killeen was out of touch with his boots and failed to land

penalties he would normally convert with ease. Castleford were able to snatch a penalty in each half from centre Ron Willett and then hang on under intense pressure to pull off a memorable and unexpected victory. Castleford retained the trophy the following two seasons and, in fact, won the competition four times from the 15 years it was contested. No other club won it as often, a fine record which began with that excellent victory at Knowsley Road.

## MERCEDES-BENZ

NEW & USED SPARES

Dronsfields (Oldham)

Delph New Road

Delph

01457 871717



## BEE FAMILY FINANCE

IF YOU REQUIRE CREDIT FOR

- Small Personal Loans
- Household Goods
- Carpets
- Furniture
- TV's
- Car repairs etc

We can also arrange credit facilities for leading fashion shops in Oldham and Manchester

A family business that looks after your family's needs  
JUST CALL IN AT THE BEE FOR FRIENDLY ADVICE  
Telephone: 624 9908

OLDHAM HOTLINE 0891 44 00 70



**Joseph Parr (ALCO) Ltd**

**BUILDERS AND TIMBER MERCHANTS**

Your Local Supplier  
of all Building  
and Timber Products

Call us on

**0161 633 1264**

Higginshaw Lane,  
Royton, Oldham.

**REDDISH  
DEMOLITION  
LIMITED**

ALBION HOUSE  
UNDER LANE, CHADDERTON,  
OLDHAM

**Tel: 0161 682 6660**

**Fax: 0161 682 5252**

All types of demolition work undertaken  
Demolition, Dismantling and Asbestos  
Removal Specialists

**PROUD SPONSORS AND  
SUPPORTERS OF  
OLDHAM RLFC**

**TODAY'S SPONSORS**

**BIG MATCH SPONSOR**



Head Office: Kelly Street, Prescot,  
Merseyside L34 5PG  
Telephone: 0151 493 1267  
Fax: 0151 430 0665

Thank You to John and his guests.  
Have a great day

**MATCH SPONSOR**



**Hyde Precision  
Components Ltd**  
Captain Clarke Road, Broadway Industrial Est,  
Hyde, Cheshire SK14 4QG  
Tel: 0161 368 3446  
Telex: 669307 HYDUK G  
Fax: 0161 367 8661

**GILBERT MATCHBALL SPONSOR**



**Browns Colour  
Printers Ltd.**

Unit 5, Pennant Street Industrial Estate  
Oldham OL1 3NP  
Tel: 0161 620 5547 Fax: 0161 620 5535

Thank you to Andrew and his guests  
Enjoy the afternoon

**MAN OF THE MATCH SPONSOR**

**HOLLINWOOD  
WELDING CO LTD**

Busk Road, Oldham  
Tel: 0161 624 2750  
Fax: 0161 627 3051

For all Welding & Engineering Jobs  
Thanks to Jim for his continued sponsorship

**PROGRAMME SPONSOR  
MASON COMMUNICATIONS**

The World Trade Centre  
Exchange Quay  
Manchester M5 3EJ  
Tel: 0161 877 7808

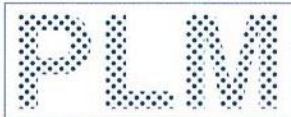
Thank You to Terry Flanagan the ex-Oldham  
captain and big Watersheddings favourite

**TEAM SPONSOR  
DON YATES**

Thanks to Don  
(our programme hero)  
Don is one of the many unpaid  
workers who does a great job  
Thanks a million

**SERVICES**

**CLOSED CIRCUIT  
TELEVISION  
SPECIALISTS**



Unit G1  
Brookside Business Park,  
Greengate,  
Middleton, Manchester.

M24 1GS  
Telephone

**0161-654 7449**

Facsimile

**0161-624 3333**

**THERE IS EVERYTHING YOU NEED AT**



**ALL THE BEST NAMES YOU EXPECT AT  
PRICES YOU WON'T BELIEVE**

Repair Agents ★ All Year Round Club  
Open Six Days

Why not visit our discount shop

**PRAMCOTS**

76 Yorkshire Street, Oldham

**Tel: 0161-628 9754**

**BABYLAND**

54-56 George Street, Oldham

**Tel: 0161-624 1160**

**£10 VOUCHER**

Please present this advert  
for £10 off when you spend  
£100 or more( this voucher  
may only be used once and  
may not be used against any  
other offer or at sale times.



O.R.L.F.C.

**"Monty's"**

**NIGHTCLUB**



**OLDHAM'S  
FOREMOST  
FREEHOUSE**

17/21 Mumps Oldham  
**Tel: 0161 620 9566**

**PAUL ABBOTT  
LIMITED  
SPRINGHEAD  
GARAGE**

*Quality Used Cars  
and First Class  
Servicing*

**TEL: 0161 624 2725  
FAX: 0161 624 5128**



For a beautiful new bathroom  
at a price that only  
plumbers pay...

discover Ashton's  
premier bathroom showroom.

❖ **SAVE** by buying at genuine low trade prices  
and **FREE** delivery on all items.

*"The price on the suite we chose was quite exceptional."* Mrs. B. Cook, Hyde.

❖ **FREE** expert advice (and with over 115 years of plumbing trade experience no one can give you better).

*"The advice I received was first class and the all the staff were very helpful without being pushy."* Mrs. P. Baker, Reddish.

❖ **QUALITY** and **CHOICE** with over thirty beautiful displays all from the leading bathroom manufacturers.

*"We were personally recommended for quality and when we visited we weren't disappointed."* Mrs. C. Rait, Uppermill.

Open Monday to Friday 8 a.m. ~ 5 p.m., Saturday 8 a.m. ~ 4 p.m. and  
Sunday 10 a.m. ~ 4 p.m.  
Free car parking on site.

**Tameside's Premier Bathroom Showroom**

at Elias Wild & Sons Ltd., Builders & Plumbers Merchants since 1879.  
Bentinck St., Ashton-under-Lyne. ☎ 0161-330-2214

Straight down Ashton / Oldham Rd. to the very end: at the roundabout  
take the 3rd (Manchester) exit and then 1st left (about 20 yards) into  
Bentinck St. straight to the bottom (approx. 50 yards) and you're there.

Over 100 years of bathroom sales excellence.

**NEW OLDHAM SHOWROOM OPENING SOON**

OLDHAM HOTLINE 0891 44 00 70

**SOFTWARE  
SYSTEMS  
ALL  
YOUR  
COMPUTER  
NEEDS**

**626 5588**

**GARFORTH GLASS  
& MIRROR CENTRE**

Established 1945

• **GLASS DEPT** • **MIRROR CENTRE** •

• **PICTURE FRAMING** •

- ⊗ Glass cut to size ⊗
- ⊗ Toughened Glass ⊗
- ⊗ Laminated Glass ⊗
- ⊗ Double Glazing ⊗
- ⊗ Glass Table Tops ⊗
- ⊗ Glass Cabinet Doors ⊗
- ⊗ Glass Shelves ⊗
- ⊗ Holes Cut & Drilled ⊗
- ⊗ Decorative Glass Engraving ⊗
- ⊗ Putty, Beading Silicone ⊗
- ⊗ Decorative Leading ⊗
- ⊗ Delivery Service ⊗
- ⊗ Rigid Plastic Sheet ⊗

*Personal, Friendly service  
from a family firm!*

49-55 CO-OPERATIVE STREET, SPRINGHEAD, NR.

LEES, OLDHAM

TEL: 0161-624 7495 FAX: 0161-627 5347

**ROUGHYHEADS BECOME SMARTYHEADS  
AT**

**HEADHUNTERS  
HAIRDRESSING COMPANY**



2 mins from Oldham Centre on the main Ashton  
Road. Plenty of parking space. Open 6 days

**SEPARATE LADIES & GENTS SALONS**

Also at Bolton & Moston

No Appointments Required

**CUSTOM MADE  
FLAT PACK PRICES!**

**KITCHENS**

**STEPHEN J. BATTERSBY  
INDEPENDANT DESIGNER &  
SUPPLIER OF PROPER  
TACKLE**

**TELEPHONE:  
SADDLEWORTH  
01457 877776**

OLDHAM HOTLINE 0891 44 00 70



MALCOLM LORD

## THE FACE BEHIND THE VOICE OF BBC GMR'S RUGBY LEAGUE COVERAGE

# KEEPING OUR FEET FIRMLY ON THE GROUND

As the world of Rugby League waits in anticipation the arrival of the new super league, what better reminder to keep our feet firmly on the ground could we have had than recent results in the Regal Trophy.

Yes, I know we had little choice but to make the swop, and I fully agree that its the only way forward, but we would not be human if we did not retain some doubts, after all it is a momentous move. So when St. Esteve disposed of Leigh in the first round and then Carlisle had that superb victory over Castleford somehow it made me feel a great deal better inside.

No offence to Leigh or Castleford but its these occasional upsets that make cup competitions the exciting spectacles they are.

Halifax were given a real scare by plucky Swinton who apparently were outstanding and the Lions performance will I am sure give confidence to Huddersfield who have been drawn at home to Wigan in the next round.

Okay they may well go out of the competition, but handled rightly and this one game could turn out to be real bonanza for the Yorkshiremen and once again give us a packed McAlpine Stadium.

On a lighter note I was at a dinner recently when the guest of my right used his steak knife for the melon, the waitress pointed out his mistake and politely offered to replace it with a clean one. The man in question made light of the mistake and promptly wiped the blade clean. A few minutes later the waitress brought the soup along, bent down and whispered in the mans ear "you use the spoon with this".

Malcolm Lord  
BBC GMR



## The COOPERATIVE BANK

*Business customers who care.*

# Time to change your business banking?

If you don't get a satisfactory service from your suppliers, you stop dealing with them. Why should it be any different for your bank?

At the Co-operative Bank, we have built our reputation on the provision of quality service to our business customers and underpinned this with a full range of products and services and a commitment to continuous innovation. We are the only bank with a full telephone banking service for businesses and a true sense of social responsibility which is reflected in our Ethical Stance.

No more than you should expect from a full service clearing bank with assets of £3.5 billion and established since 1872.

If you are experiencing poor service, change to The Co-operative Bank, a bank that cares as much about your business as you do.

For more information contact **Mario Arnone**  
Business Centre, Telephone 01204 365805

OLDHAM HOTLINE 0891 44 00 70

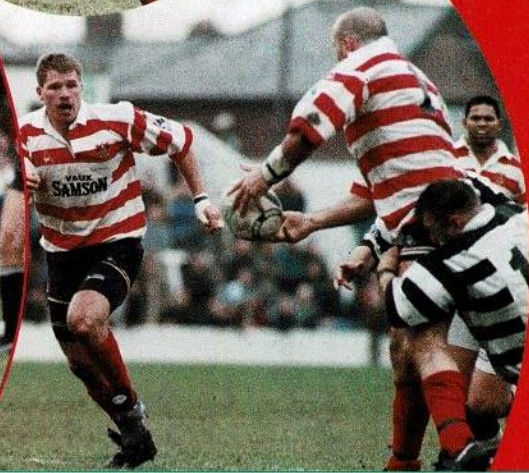
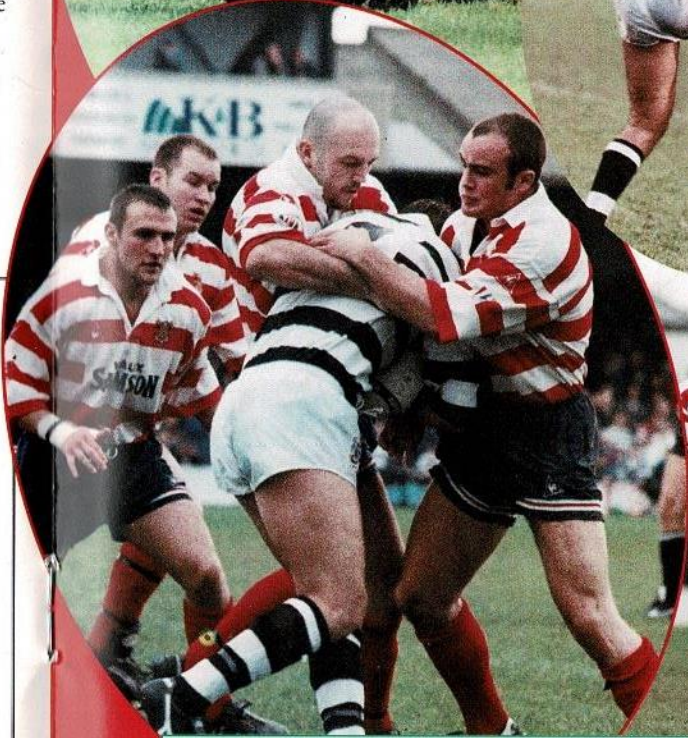
## ACTION REPLAY

TOP LEFT - MARTIN CROMPTON  
LOOKING A BIT WORSE FOR WEAR

TOP RIGHT - GARRY LORD  
RUNNING INTO TROUBLE

BOTTOM LEFT - PAUL DAVIDSON  
AND HOWARD HILL GIVING ONE OF  
THE WIDNES PLAYERS SOME CLOSE  
ATTENTION

BOTTOM RIGHT - PAUL DAVIDSON  
UNLOADING IN THE TACKLE



### CONFERENCES

A well appointed suite is available for your business meetings. Daily and 24 hour delegate rates can be arranged to suit any requirements. FULLY LICENSED RESTAURANT AND BAR: Open: Mon-Sat 7pm - 10pm

Table d'Hôte and full à la carte

Sun 12 noon - 8.30pm Lunch available all day

Plus full à la carte-children welcome

Tue-Fri 12 noon - 2pm

Business Lunches our speciality

Wedding marquees, weddings, office parties, dinner parties, dinner dances also catered for. 15 luxury en suite bedrooms - most with views of beautiful Saddleworth countryside

NEW TAME, DELPH, SADDLEWORTH, OLDHAM, OL3 5TS Tel: 01457 871035 Fax: 01457 871414

You Know  
When You've  
Earned It



Stones. Rugby League Champions from 1986.

LOCALLY  
MANUFACTURED  
RADIAL FIT  
COUPLING BOLTS  
FOR MARINE  
AND POWER  
INDUSTRIES  
WORLDWIDE



Pilgrim International Ltd,  
Ripponden Road, Oldham, England. OL1 4SB.  
Tel: 0161-624 8005 Fax: 0161-626 4945

**BOB SOPEL TRAVEL**  
for  
SUMMERSUN/WINTERSUN HOLIDAYS  
SKI HOLIDAYS  
FLIGHT ONLY'S & FERRIES  
WORLDWIDE FLIGHT RESERVATIONS  
CRUISES  
U.K./CONTINENTAL COACH TRAVEL  
U.K. HOLIDAY CENTRES  
WEEKEND BREAKS

**\*FREE INSURANCE  
or  
\*CASH DISCOUNTS**

Book with Oldham's leading  
Independent Travel Agent  
on Our Holiday Hotline  
**0161 633 2232**  
27 Henshaw Street Oldham  
ABTA 71400 & IATA  
\* on selected holidays

*Classique  
Jewellers*



Queensgate Market Hall  
Huddersfield

**LEES VILLAGE  
SERVICE STATION**

*"Much more than just a Petrol Station"*

- ★ Attended Petrol Service  
(Why put in your own petrol when  
someone else will do it for you)
- ★ 6-programme Jet-Spray Car Wash
- ★ Sweets & Tobacco Shop
- ★ Car Accessories
- ★ Calor & Propane Sales & Deliveries
- ★ Mobile Heater Sales
- ★ Sandwich bar
- ★ Flowers
- ★ Lottery Coming Soon

**OPEN**

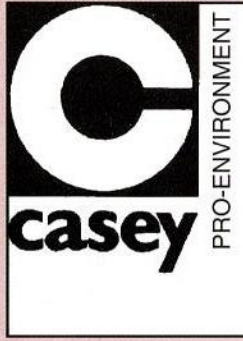
Monday - Friday 7am - 10pm  
Saturday, 7.30am - 9pm,  
Sunday, 8am - 9pm  
ST. JOHN STREET, LEES, OLDHAM  
Telephone: 0161 624 2306

# RUGBY RECALL

1. Which player scored Oldham's only try in last seasons 10-18 home defeat by Castleford?
2. Who was Oldham's full back in the above match?
3. Which Castleford player scored a try against Oldham in both of last seasons league matches?
4. Which team beat Castleford in the first round of last seasons Premiership Trophy?
5. Which Castleford player scored four tries during last seasons 25-18 defeat of Doncaster?
6. Who was Casleford's coach for 8 months in 1974, immediately before Malcolm Reilly?
7. On which second division side did Castleford inflict a 94-12 defeat in season 1988/89?
8. In June 1992 Oldham cut the asking price from £150,000 to £95,000 on which player.
9. Worked out the answer to above? Good, now tell us, what was the actual fee received?
10. Which centre did Castleford sign from Penrith, Australia in October 1992?

**ANSWERS**  
 1. Jason Temu 2. Scott Ranson 3. Tony Morrison 4. Warrington (30-22) 5. Tony Smith 6. Dave Cox 7. Huddersfield 8. Mike Ford 10. £77,500 10. Graeme Brady

The Welsh Connection™  
 Copyright Kelvin Jones 1995



**PRO-ENVIRONMENT**  
**casey**

**The Casey Group of Companies**  
 PO Box 54, Rydings Road  
 Wardle, Rochdale  
 Lancashire OL12 9PS

Tel: (0706) 341121  
 Fax: (0706) 861156

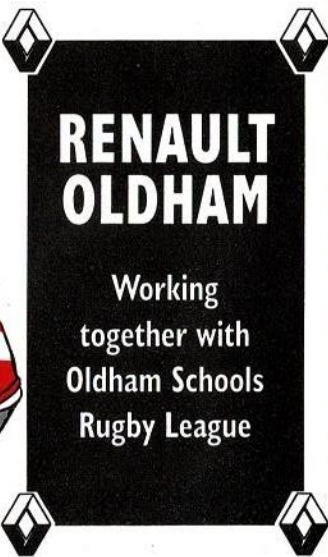
# DEVELOPMENT NEWS

The coaching of young players initiative which was introduced this week by Andy Goodway and Alan McCurrie is a very welcome project and shows the club's good intentions as we move inexorably towards Super League. These notes are written before Thursday as I can only hope that the young players have responded and turned out in good numbers. Since our last programme notes all the schools Rugby League has just about gone to sleep for the winter but there are several important events still in progress. The town teams are still playing most weekends, although the under 16's have been short of fixtures, Saddleworth High School and Carnhill are still involved in Lancashire Schools Cup games and by next week all the Renault Oldham Schools Championships will be settled. All the local amateur clubs are fully involved every Sunday morning with some teams enjoying remarkable success. The entry forms have now gone out for the Renault, Oldham



Youngsters at "Hathershaw Rugby Emporium"

Schools Cups and I hope that we can beat last seasons entry of 89 teams. All in all, Junior Rugby League is having a busy time and I hope you can manage to enjoy some Junior games alongside your regular Oldham diet. Welcome to the young players who have been playing Little League at Hathershaw Sports Centre every Saturday morning for the last 6 months. Welcome also to the parents and coach.



**RENAULT OLDHAM**

Working together with  
 Oldham Schools  
 Rugby League

# 1995-96 PLAYER SPONSORSHIP



- MIKE NEAL**  
Sue Done
- MARTIN CROMPTON**  
Oldham Plant Hire
- PAUL TOPPING**  
Kevin Kershaw Associates
- JASON TEMU**  
Sue Corbett
- JOE FAIMALO**  
Dave Askew
- STEVE GARTLAND**  
Alex Hammond
- HOWARD HILL**  
Alex Hammond
- DARREN ABRAM**  
Cockfield Farm
- FRANCIS MALONEY**  
ARC Electric
- GARY LORD**  
Pat & Shaun Whelan
- WALLY GIBSON**  
Steve Collinge
- PAUL ATCHESON**  
Browns Colour Printers
- JOHN CLARKE**  
Pandel Tiles
- CHRIS PARR**  
Helen Calow
- IAN SHERRATT**  
Brenda Rogers
- MICHAEL EDWARDS**  
Irene Calow
- SCOTT RANSON**  
Maureen Mitchell
- ROB MYLER**  
Garforth Glass & Mirror Centre
- IAN GILDART**  
Treble Darts Trophies
- ADRIAN BELLE**  
Sheddings Night Club



# INJURY UPDATE

After the Workington game our injury situation was close to crisis point as we paid a heavy price in our hard earned victory. The extent of the injury list was frightening, as we had 21 senior players sidelined. The worst of the injuries centered on John Clarke, who in his comeback game broke the same arm again and will be out of the action for quite some time.

However, it is not all doom and gloom as most of the lads are well on the way to recovery and a lot of the senior players are back in training.

Of the long term injured both Ian Sherratt and Joe Faimalo are close to full fitness and the signs are also good with Paul Atcheson, Mike Neal, Gary Lord and Chris Parr.

Introducing

## Club 57's Fantasy Bar

Thursday: 60's 70's Soul, Motown, Northern Soul with DJ Clarence Over 21's Strictly no Trainers

Friday: 80's Street Soul with Kiss 102 DJ Smart Casual Dress

Saturday: Party Nite with Captain Ginger Floorshow Extravaganza. Smart Casual Dress

Club 57, Roscoe Street, Oldham  
Tel: 0161 627 5777

Coming soon to Oldham

## The Cage at 57

Proprietors Roy Tindall & Tony Ogden

# OLDHAM v CASTLEFORD

How the Roughyeds have fared against Cas

Competition	Played	Won-drawn-lost
League	45	16-2-27
Challenge Cup	6	3-0-3
Regal Trophy	1	0-0-1
Floodlit Trophy	2	1-0-1
Total	54	20-2-32

Results during the past ten seasons

1985-86	Oldham 46 Castleford 22 (League)
	Castleford 28 Oldham 4 (League)
	Castleford 18 Oldham 7 (Challenge Cup semi-final) at Wigan
1986-87	Castleford 22 Oldham 18 (League)
	Oldham 6 Castleford 29
1987-88	Did not meet
1988-89	Castleford 22 Oldham 19 (League)
	Oldham 34 Castleford 18 (League)
1989-90	Did not meet
1990-91	Oldham 28 Castleford 22 (League)
	Castleford 28 Oldham 10 (League)
1991-92	Did not meet
1992-93	Oldham 22 Castleford 40 (Regal Trophy)
1993-94	Castleford 34 Oldham 16 (League)
	Oldham 10 Castleford 28 (League)
1994-95	Castleford 34 Oldham 14 (League)
	Oldham 10 Castleford 18

Oldham's biggest win at Watersheddings 46-22 League in season 1985-86  
Castleford's biggest win at Watersheddings 29-6 League in season 1986-87  
Oldham's biggest win at Wheldon Road 31-16 League in season 1941-42  
Castleford's biggest win at Wheldon Road 28-4 League in season 1985-86

Castleford's last visit to Watersheddings  
Thursday 20th April 1995 Division One  
Oldham 10 Castleford 18  
Half time 4-10 Attendance 2,840  
Oldham try Jason Temu  
goals Paul Topping (3)  
Castleford tries Chris Smith, Andy Hay and Tony Morrison  
goals Lee Crooks (3)

Oldham: Scott Ranson, David Jones, Paul Topping, Darren Abram, Adrian Belle, Steve Gartland, Gary Burns, Craig Richards, David Stephenson, Jason Temu, Gary Lord, Joe Faimalo and David Bradbury, Substitutes, Mike Neal and Mike Kuiti.

Castleford: Jason Flowers, Chris Smith, Ritchie Blackmore, Richard Goddard, Simon Middleton, Tony Kemp, Tony Smith, Lee Crooks, Richard Russell, Dean Sampson, Andy Harland, Andy Hay and Tawera Nikau, Substitutes Tony Morrison and Nathan Sykes.

Compiled by Don Yates

OLDHAM HOTLINE 0891 44 00 70

# MONARCH METALS

BUYERS OF INDUSTRIAL CABLE,  
SWITCHGEAR, MOTORS  
& NON-FERROUS METALS,  
WORKS CLEARANCES

0161 665 1819

UNIT 17, MONARCH MILL, JONES STREET,  
ROYTON, OLDHAM OL2 5AH



**Commercial, Criminal &  
Private Investigations**

for a fast, effective and confidential resolution

**Kevin Kershaw Associates**

Westbourne House, 159, Oldham Road,  
Ashton-under-Lyne, Lancashire OL7 9AR.  
Tel: 0161 343 6510 Mobile: 0374 455905  
Fax: 0161 339 0046

QUALITY

DUST

MATS

CHANGED

WEEKLY

AT THE

BEST VALUE

PRICE

DUST MAT

RENTALS

TO ENSURE A CLEAN  
AND SAFE  
ENVIRONMENT,  
CONTACT US TODAY FOR  
A FREE TRIAL

0161-620 6795

OWL BUSINESS CENTRE  
HIGH STREET, LEES,  
OLDHAM, LANCs,  
OL4 3BN.

# Moorside Metal Products Limited

**STEEL FABRICATORS  
ENGINEERS**

Highfield Street,  
Oldham, OL9 6DT.

Telephone 0161 624 3303

Telefax 0161 627 3101

An ISO 9002 Approved Company

**SPECIALISTS IN PROCESS PLANTS  
AND OFFSHORE FABRICATIONS**

OLDHAM HOTLINE 0891 44 00 70

# DUNCANS OF OLDHAM

**OLDHAMS ONLY MAIN DEALER**

**FOR**

# VOLVO

**0161-628 6200**

**NISSAN**

**0161-624 2404**

# HYUNDAI

**0161-624 2404**

**FIRST FOR SALES • SERVICE & PARTS**

**ALWAYS A HUGE SELECTION OF TOP CLASS NEW, USED & DEMONSTRATORS AVAILABLE**

## ALL ON ONE SITE

ROCHDALE ROAD • OLDHAM • OL1 1NU • OPPOSITE CIVIC CENTRE

**CUSTOM MADE FLAT PACK PRICES!**

# KITCHENS

**STEPHEN J. BATTERSBY**

**INDEPENDANT DESIGNER & SUPPLIER OF PROPER TACKLE**

**TELEPHONE: SADDLEWORTH 01457 87776**

OLDHAM RLFC

## ALLIANCE UPDATE

**WITH ALLIANCE COACH GRAHAM BEALE**

### OLDHAM 24 HULL 20

Four trialists and 1 academy player shows the injury list is not getting any better, but the players rose to the occasion playing against Hull who are a very good side. Oldham's forwards were the first to settle into a good basic pattern of play and good defence to unsettle the visitors into making mistakes, a good high kick saw Sapaga score first and Meade to convert, Hull tried hard to get back on level terms but

were rocked by a further two tries by Gouldbourne and Barker, With Meade converting. A quick response by Hull to score made the half time score of 14-4. The second half started like the first Barker putting Gouldbourne over for Meade to convert, Oldham were looking very confident at 20-4 up. A scrum in centre field saw Hull score the ref getting in the way of a possible tackler made the score 20-10 which lifted the Hull side as they quickly

scored again a chip over the defence and a knock on which the officials did not see gave Hull another six pointer, Oldham tried hard to halt Hull but came up with errors which Hull took advantage of the score again to make the game all square. End to end football saw Gouldbourne kick and chase to score to give him a hat trick and Oldham the game. Best for Oldham Goudbourne, Belle, Meade, Nuttall, Edwards, Olsen.

## QUOTES & HISTORICAL HAPPENINGS

### ON THIS DAY

#### Don Yates Looks At This Day In History

It was on this day in 1954, Friday 19th November that Australia met New Zealand at all places, Hilton Park, Leigh! It was the first of three friendly matches between those nations as they returned home from the 1954 World Cup competitions in France. A crowd of 6,000 saw Australia win that match 18-5 scoring four tries through Harry Wells, Ian Moir, Greg Hawick and Noel Pidding. It was on this day in 1980 that England defeated Switzerland 2-1 in a soccer World Cup qualifying tie at Wembley, Steve Coppull and Paul Mariner were the English goal scorers. Twelve months ago, on Saturday 19th November 1994 local amateurs St. Annes

defeated Higginshaw 12-4 in the semi final of the Lancashire Cup. On Wednesday 19th November 1975 Yorkshire met Cumbria at Dewsbury in the opening match of the 1975 County Championship. At half time Yorkshire trailed 7-2 but they recovered to win the match 10-7 and went on to win the County Championship that season. Let us hope that the weather today is much better than it was on Saturday 19th November 1949. That day as today, Castleford visited Watersheddings for a league match which was abandoned with the scores level 5-5. When the match was replayed the following March, Oldham ran out winners 21-9. On this day three years ago, 19th November 1992, Salford signed Steve Blakeley from Wigan. It has proved to be

an excellent capture for the Red Devils as Blakeley has been the top scorer at the Willows during the past two seasons. Watersheddings has staged many important matches and one such match took place on Saturday, 19th November 1927 when Swinton met Wigan in the final of the Lancashire Cup. Swinton won 5-2 before a crowd of 22,000, the only try of the match coming from the Lions second row forward Dick Cracknell.

**Quote of the week comes from David Russell who once said "The hardest thing in life to learn is which bridge to cross and which to burn."**  
**Murray Walker's comments on the motor racing championships make good listening, in a recent race he commented, "You can cut the tension with a cricket stump."**

# NEIL GIBBISON

**B.D.S., V.U. Manc.**

*Dental Surgeon*

36 Oldham Road Uppermill Oldham OL3 6HV

Telephone: Saddleworth (01457) 872108

OLDHAM HOTLINE 0891 44 00 70

# RUFF E. HEAD

BY IAN WILSON

In spite of the fact that last week saw the official launch of Super League, there are annoyingly regular comments made to the effect that Oldham are not fitted to be a member, with hints that maybe the end of the Centenary mini-season might yet see things change. The implication is that Salford, or Widnes, or Hull, or Newcastle, or Cardiff, or whoever, might be sneaked in at our expense. I hope I am reading things into a whole range of statements which are not really there. But recent past experience does not fill me with confidence that there might not yet be some attempt to move goalposts at the last minute. An unequivocal statement would not go amiss. And I hope we have our lawyers' pencils sharpened, just in case.

There is no denying, of course, that we haven't set the world on fire since we handed the first game of the season on a plate to Cas. But the crucial proof of the pudding will be in the eating, with the publication of the final Super League table on August 25, 1996. Whether Andy Goodway is enticed away or not, whatever position we finish this non-event season in January, whatever our cup performances, and whatever our crowds, the short-term future of the club must be in the hands of its players and management during the first Super League season itself. And before we all start despairing - or whining - we are not yet anywhere near even the starting line for that.

Recent games have made me wonder about the power of refs to influence the course of games, and about the

strange ways of sides left depleted. Our exploits in the final few minutes against Workington, of course, are fresh in the mind, and were quite amazing - but not really typical. More so, I suspect, was the situation at Sheffield. Even with the inexperienced side we had out, we were clearly the better of two not very impressive sides in the first half, and the 18-12 lead was certainly merited. Early in the second half, Gibson's sin-binning completely changed the game; three Sheffield tries during his absence left us far too much to do, and two points which would have helped to build confidence both among the players and on the terraces (not to mention in the living rooms of those who used to be keen to pay to watch) were gone. Similarly - not that we had a good patch before he had gone - the prospects of a win at Widnes were virtually zero after Chris Parr's dismissal. But even then, the referee gave a penalty against us, in possession, on the first tackle, virtually on the Widnes line, with their defence in disarray. What benefit did he think we might gain by conning a penalty when all we apparently had to do was play the ball? The result? Widnes went straight to the other end, and scored!

Of course, we are not the only side to concede crucial tries when reduced to 12 (or less) men. You only have to look at the times of tries given in League Express' statistical service, and compare them with the timings of sin-binnings, to see the influence the referees' decisions can have. I am not saying that no sin-binnings or sendings-off are right, of course. I think the sin-bin is an excellent principle. All we ask for is - not for the first time - consistency of application. And

perhaps a bit more emphasis to the players on how to avoid being binned might help, too!

I really cannot fathom the machinations of the fixture-makers at RL Headquarters. I understand all about traditional derby dates, clashes with competing ground users, etc. And I am even prepared to accept it might be coincidence that we again start with Wigan, Halifax, Leeds, Castleford, St. Helens, Bradford in 6 of the first 7 games (but where are Warrington?). But I cannot accept it is anything other than intended that Wigan should begin with 5 home matches out of the first 6 rounds. And it is blatantly unfair. For example, why cannot Wigan play at Cas. instead of at home, in Round 4? Not only would it even things up a bit, but it would at least give West Yorkshire a game on the weekend of April 12-14! After the farcical World Cup ticketing and advertising arrangements, I am afraid that the RFL has again shot itself in the foot.

One of the great potential disadvantages of the switch to summer is the loss of season ticket revenue. As supporters look at fixtures, they will be able to identify some already that they will be unable to attend - so they won't buy full season tickets. I wonder if anyone has thought of introducing, say, part season tickets. The supporter could buy, say, six or eight tickets before the season, at reduced rate, to be used at his/her chosen home games - and the club would still get in the revenue early. Of course, such a policy would only be a part of what one hopes is a carefully thought out, but innovative, marketing strategy for Super League. We live in hope.



## Three Crowns Inn & Restaurant

HUDDERSFIELD ROAD,  
SCOUTHEAD,  
OLDHAM.

TELEPHONE: 0161 624 1766

Food served  
All Day Sunday

OLDHAM HOTLINE 0891 44 00 70

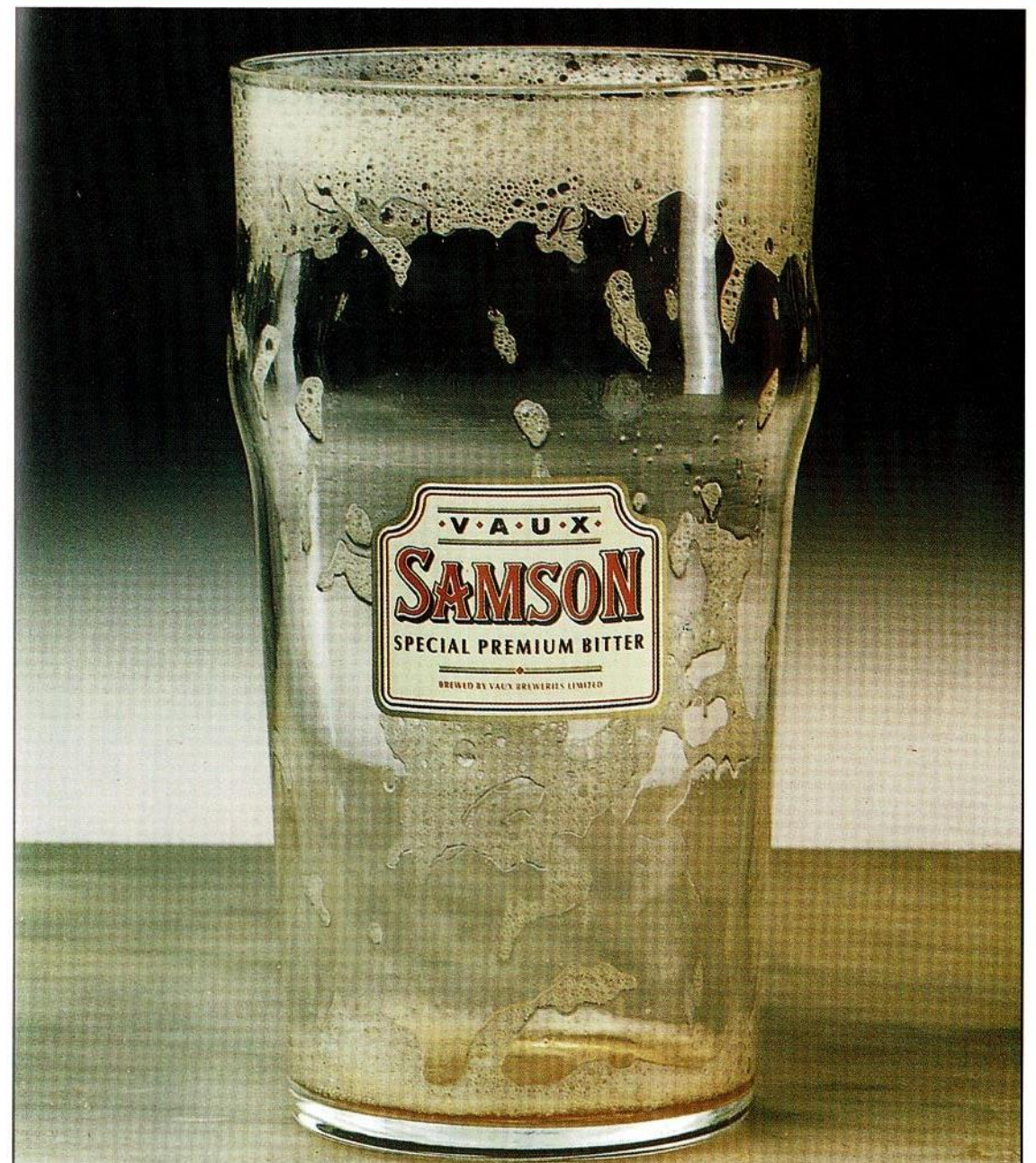
## Medlock Building Co. Limited

THE BROADBENT GROUP of COMPANIES

Birchilee Mill, Streetbridge,  
Off Middleton Road,  
Royton,  
Oldham OL2 5EW

Tel: 0161 620 2346  
Fax: 0161 627 4979

The Right Choice



# TRY AGAIN!

VAUX SAMSON - ITS STRENGTH IS ITS TASTE

OLDHAM HOTLINE 0891 44 00 70

**NEW SUPER LEAGUE APPOINTMENTS ANNOUNCED**

Two new Super League appointments have been announced. Former Surrey County Cricket Club Business Director, Mark Newton, has been named as Director of Marketing, while Tony Gale has been appointed as the Internal Audit Executive. Newton has spent eight years working with Surrey at the Foster's Oval in London where he has been in charge of operations which have generated an annual income of £4.5 million. He has a degree in hotel and catering management and moved into cricket after four years as general manager with Bracknell Basketball Club. He said "I believe that Rugby League has an exciting future but it faces stiff competition from other sports. The future of the sport will have to be marketing led and I see my central role as helping all clubs to move in that direction. The sport of Rugby League has never had such a high profile and I am looking forward to being part of the national growth of the game." Tony Gale will be responsible for monitoring the distribution of the News Corporation money and ensuring that it is efficiently accounted for under the "Framing the Future" report requirements. After 22 years with the Inland Revenue Gale ended his career as Senior Tax Inspector. His final role at the London Headquarters of the Revenue saw him responsible for policy and organisation of investigations. After leaving the Civil Service he joined a medium sized accountancy practice in the North of England as the Principal Tax Consultant. He says "I have always been interested in Rugby League. I believe the game is going from strength to strength and I'm looking forward to playing a part in its future."

**MILESTONES**

**GARY CONNOLLY** of Wigan needs one try for a career century of club and representative touchdowns.

**RAY ASHTON** of Bramley needs two tries for a career century of club and representative touchdowns.

**COMPETITION WINNERS**

These are the winners of the "Up and Under tickets" from the last programme. Each wins a pair of tickets.  
 Mark Holms  
 Simon Walsh  
 Lauren Wolstenholme  
 Christopher Hepworth  
 Nicola Hurst

**STATISTICALLY**  
**THE CENTENARY SEASON FIXTURES**

Date	Versus	Time	Score	Att	1	2	3	4	5
AUG 20th	Castleford	A 3.30	L28-22	4341	Gibson	Ranson 1T	Topping	Abram 1T	Myler
23rd	ST. HELENS	H 7.30	L18-44	4316	Gibson	Neal	Topping	Abram 1T	Myler
27th	Warrington	A 3.00	L40-8	4064	Gibson	Belle	Atcheson	Abram	Neal
SEPT 1st	HALIFAX	H 7.30	85K7B L4-21	2938	Gibson	Belle	Atcheson	Abram 1T	Neal
6th	London Broncos	A 7.30							
10th	BRADFORD BULLS	H 3.00	L24-30	3222	Gibson	Belle T2	Atcheson	Abram	Neal
20th	LONDON BRONCOS	H 7.30	W19-8	3,004	Atcheson T	Gibson	Topping	Abram T2	Ranson
24th	Wigan	A 3.00	L42-12	10,909	Atcheson	Gibson	Topping	Abram	Ranson
OCT 1st	LEEDS	H 3.00	L14-43	3,782	Atcheson	Gibson	Topping	Abram	Ranson
NOV 1st	WORKINGTON	H 7.30	W30-26		Atcheson	Ranson	Levila T	Abram 2T	Gibson T
5th	Sheffield Eagles	A 3.15	L18-36		Cowans	Ranson	Levila	Abrams T	Myler
12th	Widnes Regal Round 2	A 3.00	L32-8	3,571	Cowans	Ranson T	Levila	Abram	Belle
19th	CASTLEFORD	H 3.00							
26th	Regal Trophy - Round 3								
DEC 3rd	Bradford Northern	A 3.00							
10th	Regal Trophy - Round 4								
13th	St. Helens	A 7.30							
17th	WIGAN	H 3.00							
26th	WARRINGTON	H 3.00							
30th	Regal Trophy - Semi Final 1								
JAN 1st	Halifax	A 3.00							
6th	Regal Trophy - Semi Final 2								
7th	Leeds	A 3.00							
13th	Regal Trophy Final								
14th	Workington Town	A 3.00							
21st	SHEFFIELD EAGLES	H 3.00							
27th	Silk Cut Challenge Cup - 1st Round								

OLDHAM HOTLINE 0891 44 00 70

**SPEAKING 95-96**

6	7	8	9	10	11	12	13	14	15	16	17
Maloney 3G	Crompton 1T	Sherratt	Clarke	Parr	Lord 1T	Faimalo	Green	Neal	Hill	Gildart	Richards
Maloney 5G 1T	Crompton	Sherratt	Clarke	Parr	Gildart	Faimalo	Lord	Green	Hill	Temu	Atcheson
Topping 1T	Burns	Richards	Edwards	Temu	Green	Davidson	Hill	Parr	Gildart	McKinney 1T	Cowans
Maloney	Crompton	Sherratt	Clarke	Gildart	Lord	Faimalo	Hill	Topping	Richards	Gartland	Parr
Maloney 4G	Crompton	Sherratt	Clarke T	Richards	Lord	Faimalo	Hill T	Topping	Gildart	Temu	Green
Maloney 6G	DG Crompton	Sherratt	Clarke	Temu	Lord	Faimalo	Hill	Gartland	Parr	Neal	Green
Gartland 6G	Crompton T	Sherratt	Clarke	Temu	Lord	Green	Hill	Neal	Parr	Belle	Davidson
Maloney 3G	Crompton	Parr	Gartland	Temu	Lord 1T	Green	Hill 1T	Neal	Belle	Davidson	McKinney
Maloney 2G T	Crompton	Parr	Gartland 6G	Temu	Lord	Green	Hill T	Clarke	Myler	Norman	Davidson
Gibson	Crompton	Norman	Gartland 3G	Temu	Davidson	Green T	Hill T	Edwards	McKilian	McKinney	Belle
Gibson	Crompton	Parr	Gartland 2G	Temu	Lord	Davidson	Hill	Green	Sherratt		

**CONFERENCE SUCCESS**

Both our local Conference clubs have enjoyed a successful opening to the season and at the turn of the month they both led their respective tables. Next Saturday (2.30pm) Saddleworth Rangers are at home to Lock Lane of Castleford in the Premier Division and on December 9th National Cup holders West Hull visit Shaw Hall, Bank Road. Both those games could be subject to postponement however if, as expected, Rangers won yesterday against Wigan St. Patricks in the quarter-final of the Lancashire Cup. St. Annes face two away matches in Division One as they attempt to gain promotion and join Rangers and the big boys in the Premier Division. Next week they visit East Leeds and on December 9th travel over to Humberside where they take

on Beverley, victors over Highfield last season. ROCKY ROAD TO WEMBLEY BEGINS In just thirteen days time the Challenge Cup campaign begins, when both St. Annes and Saddleworth Rangers contest the opening round of the competition which will climax at Wembley on April 27th. Victory on December 2nd will lead to the second round on December 16th. On January 14th our professional Second Division clubs join the fray with Oldham and the rest of the Super League giants entering the competition on January 28th. The other rounds will be staged on February 11th, February 25th (quarter-final), March 9th and 23rd (semi-finals), with the final on April 27th. Let us hope that we will be represented this time.

OLDHAM HOTLINE 0891 44 00 70

**DARREN WRIGHT CHASES 100 TRIES**  
 DARREN WRIGHT of Widnes is four tries short of a career century of touchdowns. All but one of the centre's 96 tries have been scored for Widnes, who signed him from Leigh Miners amateur club in March 1985. Wright has made 326 appearances for Widnes, including 15 as a substitute, and played in 11 representative matches including one substitute appearance in a Test for Great Britain on the 1988 tour. He made his senior debut for Widnes as a substitute in a 14-12 Division One home defeat of York on 12 December 1985. His full appearance followed three days later when he was in the centre when Widnes lost 8-15 in a home league match against Hull Kingston Rovers. Wright has scored three hat tricks with the last at home to Featherstone Rovers in October 1991. His best season's total was 18 in 1988-89. Born 17 January 1968.

**TRYS CORING RUNS**  
 MARTIN OFFIAH of Wigan has scored at least one try in 11 successive matches for the club. The winger did not play in the opening Charity Shield match against Leeds but has scored in every other of Wigan's games this season, as follows:

1-1-1-2-1-1-1-1-1-1-1-5  
 His five try feat was in a Regal Trophy tie but he is aiming to continue his record equalling run of touching down in 11 successive "Big League" matches. Offiah scored in the final match of the Division One last season and in all 10 Stones Bitter Centenary Championship matches this season.

**POINT-SCORING RUN**  
 Willie Richardson of Carlisle has the current longest points scoring run covering 24 matches, stretching back to February 1995 when he kicked three goals in an 18-40 Division Two defeat at Swinton. The full backs scoring run has brought him 198 points from 87 goals and six tries.

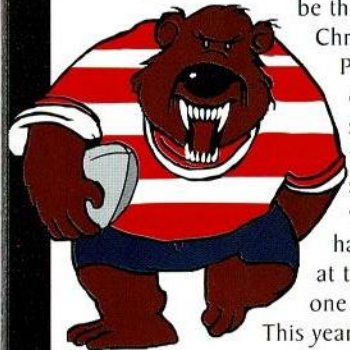
**WINNING RUN**  
 CARLISLE have the current longest winning run covering eight matches six Division Two and two Regal Trophy. WIDNES are unbeaten in eight successive matches, including one draw. KEIGHLEY COUGARS are unbeaten in their last 15 League matches, including two draws.

**LOSING RUN**  
 FEATHERSTONE ROVERS have the current longest losing run of six matches, five Division One and one Regal Trophy tie.

# JUNIOR ROUGHYEDS

CALLING ALL YOU JUNIOR ROUGHY'EDS!

**Hiiii!**  
**Welcome to today's game.**  
 I hope you are all in fine voice, and ready to cheer Martin and the lads to victory against Castleford. The next event for the Junior Roughy'eds will, believe it or not,



be the Christmas Party, it doesn't seem all that long since we were having fun at the last one does it? This years party

will be held in the Pavilion on Wednesday 20th December. Anyone wishing to attend must contact me by December 1st, as I need numbers for catering. If you have a theme you would like for the party, why not contact me on 0160 681 3397. The competition set last week was "Which Oldham player represented the Cook Islands in the Emerging Nations World Cup Final." The answer was of course Jason Temu and the winner of the prize this time is Maria Holmes. Well done Maria.

**muscle, and mud mayhem**  
 another quiet Friday night in with Sky

The Big League - Exclusive live match every Friday at 7pm  
 The Big League - Full match coverage every Sunday at 7pm  
 Boots 'N' All - Rugby League magazine show every Tuesday

for more details about Sky call **0990 123 123**

**Specialists in Commercial & Industrial Maintenance & Building Contracts**

- EST. OVER 13 YEARS
- ALTERATIONS
- EXTENSIONS
- DESIGN & BUILD
- INSURANCE WORK
- MAINTENANCE
- REFURBISHMENTS
- REPAIRS
- SHOPFITTING

D.O.E. EDUCATION, LOCAL AUTHORITY APPROVED CONTRACTORS

Covering the Northwest

**MANOR CONSTRUCTION LIMITED**

**0161-626 6521**  
 FAX 0161-627 4973

**OLDHAM HOTLINE**

FIRST FOR... NEWS... VIEWS... & INTERVIEWS

**0891 44 00 70**

OLDHAM HOTLINE 0891 44 00 70

# ACADEMY NEWS

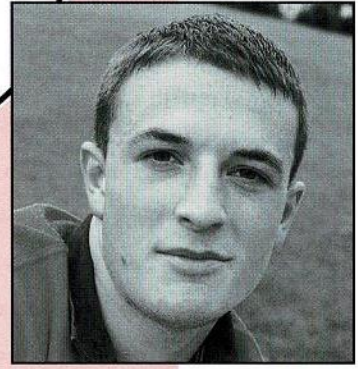
WITH BRIAN GARTLAND

Since my last notes we have played Widnes at home and lost by a drop goal in the last minute of the match after clawing our way back from a 16 points to 8 deficit to draw 16 points all. The match was in the final minute when Neil Melling, our second row forward, broke clean through and looked a certain scorer, only to have his ankles tapped by the Widnes full back. Neil got up and would obviously have scored but the referee penalised him, saying he was grounded, which was not the case. Widnes got the free kick and from the resulting penalty the Widnes centre dropped a goal to win the match for them. Our boys were devastated. On a brighter note our Academy Captain Craig Barker, who



outstanding against Halifax away, which we lost by 42 points to 36. Well done David, and well done Oldham for a great fight back.

Brian Gartland



Neil Melling

had a great debut for the 'A' team against Hull at home, has accepted terms to become a professional with his home town club. Well done Craig. Let's hope we have more of our Academy lads turning pro in the near future. David Milne, our young second row forward, was

**WE'VE CURED HEADACHES FOR THE ROUGHYEDS**

Manufacturers of upholstery fillings for over a century, Platt & Hill make foam and fibre fillings of the highest quality right here in Oldham.

So reliable are our products, that Oldham RLFC have selected them to cushion the uprights of their goal posts.

In a way, you see, we've prevented headaches all round!

**PLATT & HILL**  
 FOAM AND FIBRE FILLINGS

FIBRE FILLINGS DIVISION:  
 Belgrave Mill, Keswick Avenue,  
 Oldham, Lancs OL8 2LZ  
 Tel: 061-626 4638 Telex: 669550.  
 Fax: 061-627 3265.

OLDHAM HOTLINE 0891 44 00 70