

TODAY'S SQUADS



OLDHAM



LONDON SKOLARS

1 NIELD Steven	Oldham Self Storage 0161 665 2723
2 CLAY Adam	Fireplace Superstore 0161 488 4991
4 HOLMES, Jack	Oasis Academy Oldham
5 WARD, Jarrod	Beauchamp Properties
6 PALFREY, Lewis	Fireplace Superstore 0161 488 4991
7 ROPER, Steve	Les and Eileen Davison
8 JOY, Phil	Pam Taylor and TTX
9 GEE, Sam	John and Lynda McAndrew
10 NEAL, Adam	ORSA
11 CROWLEY, Josh	John and Lynda McAndrew
12 LANGTREE, Danny	Charlotte Gothard and Daniel Haigh
13 THOMPSON, Liam	ORSA
14 FILES, Adam	Rita Walton
15 OWEN, Gareth	Bev, Kelly and Paul Hulbert
16 HUGHES, Kenny	Rita Walton
17 TYSON, George	Mick Harrop
18 JOY, Richard	Frankie and Benny's, Oldham 0161 624 7745
19 WARD, Michael	Sylvia, David and Margaret
20 DEMPSEY, Tom	WILSCAFF 07855 265071
22 MASON, Nathan	ORLFC Players' Association
23 FORD, Jonathan	Oasis Academy Oldham
25 ASHTON, Tom	Oasis Academy Oldham

Matt Cook
Jimmy Morgan
Aaron Small
Mike Benson
Judd Greenhalgh
James Anthony
Sam Druce
David Williams
Joel Wicks
Michael Sykes
Harvey Burnett
Craig Boot
Will Fairhurst
Will Lovell
Dave Ellison
Jon Wallace
Danny Burke
Kazeem Faturoti
Vince Spurr
Anthony Cox
Olly Bloom
Dion Chapman
Seb Kolasa
Max Edwards

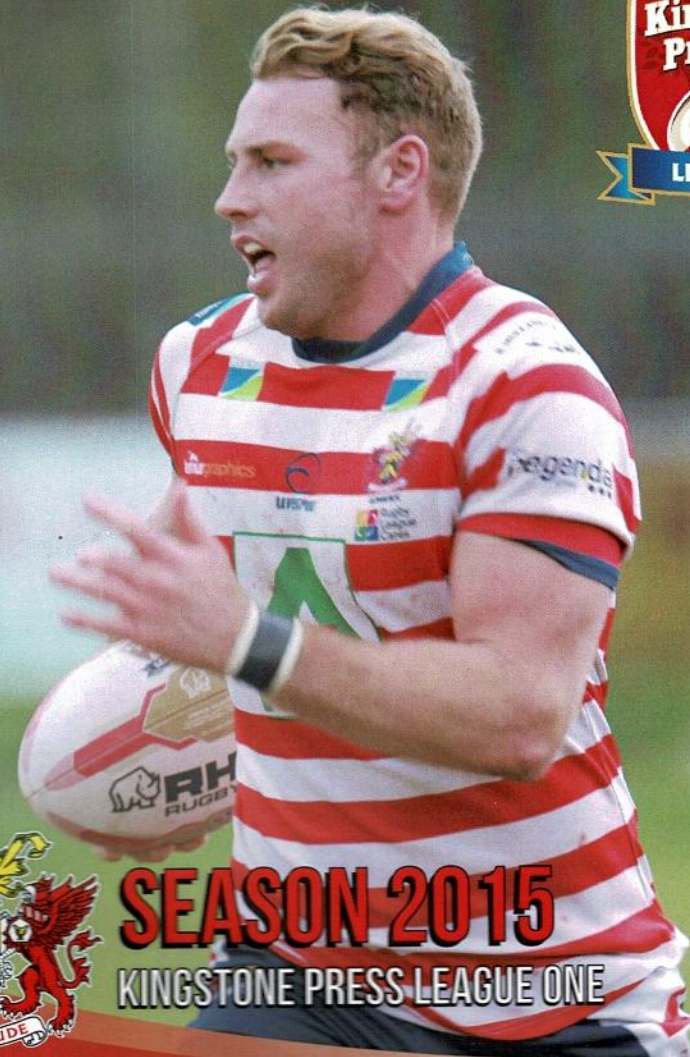
Officials: Ref: Adam Gill TJ: J Page
 TJ: T Owen Res: R Dolan
 Match commissioner: Paul Hewitt
 Sponsored By H Mullaney and Son Ltd, Skip Hire and Recycling

OLDHAM V **LONDON SKOLARS**

SUNDAY 26th
 APRIL 2015
 KICK-OFF 3pm

ISSUE #5/ £2.00
 OFFICIAL
 MATCHDAY PROGRAMME

ROUGHYEDS



SEASON 2015
 KINGSTONE PRESS LEAGUE ONE



WIN VIP TICKETS

WIN family tickets to
The Summer Bash

KINGSTONE PRESS CHAMPIONSHIP
Summer Bash

BLACKPOOL
23rd - 24th May

Plus over 250 other prizes
to be won in our daily draws.

Win exclusive Rugby balls, event T-shirts
and cases of Kingstone Press Cider.

Enter online at kingstonepress.co.uk

#KPCOREONTOUR  

Over 18's only permitted to enter. Closing date 8/5/2015 midnight.

No purchase necessary. For full term and conditions visit:
www.kingstonepress.co.uk



drinkaware.co.uk
for the facts

X --- O X O
NATTER WITH NOBBY
O X --- O X

WELCOME everyone to today's game against London Skolars here at the Whitebank Stadium.

Skolars are always an interesting challenge and we usually get a tough game from them.

They have a much-changed and different-looking team this season with a different coaching staff in charge.

A change can be a good thing in sport so I'm sure Skolars will be a force this season, both home and away. We will have to play well and show them the respect they deserve.

Our start to the season, which has provided us with several different challenges, has been a good one.

We've played the old enemy away; travelled on our longest journey to Wales; and played new boys Coventry for the third time in six weeks.

The games have shown that we can play different ways against different teams. In each of our first three league games we used a different game plan and executed it well, which shows we can adapt to the challenge in front of us on game day.

I can see

a definite improvement in the players from season to season and this group of lads is the best I have had in my three years at Oldham.

We can look forward to some exciting games whoever we play against and we are all looking forward to the opportunity to build on the good start we made in our first three league games.

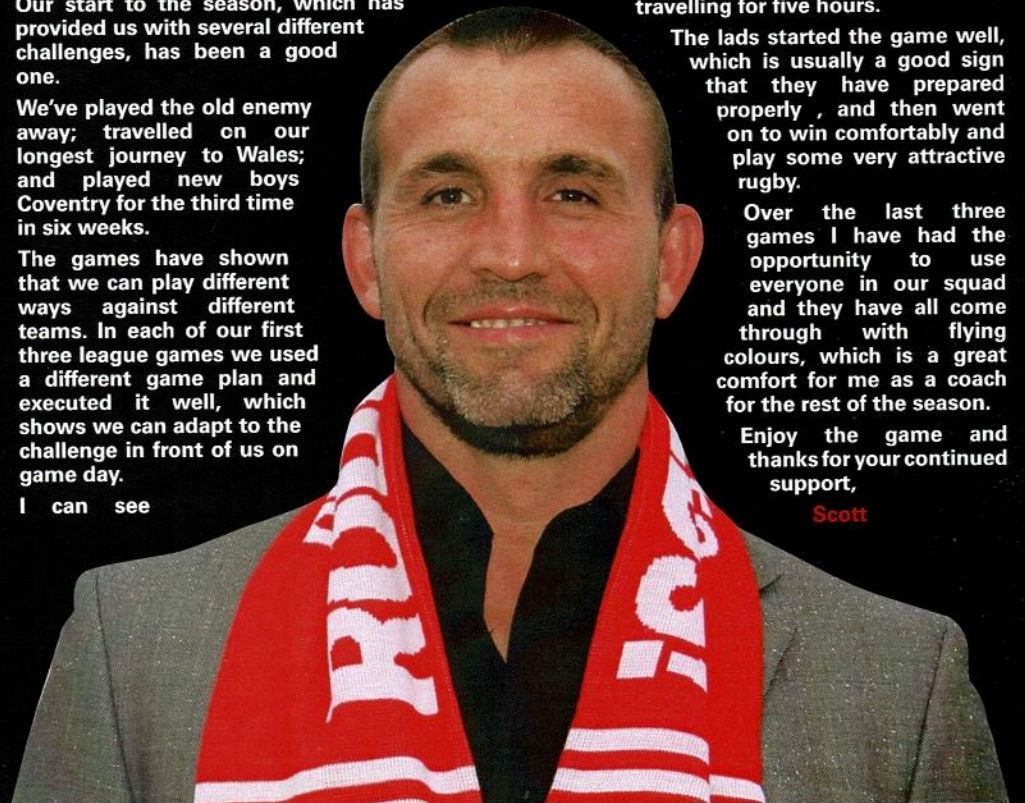
The performance last week against South Wales Scorpions was a good, professional one. The journey is one of the biggest challenges and you have to be mentally strong to overcome the tiredness and stiffness after travelling for five hours.

The lads started the game well, which is usually a good sign that they have prepared properly, and then went on to win comfortably and play some very attractive rugby.

Over the last three games I have had the opportunity to use everyone in our squad and they have all come through with flying colours, which is a great comfort for me as a coach for the rest of the season.

Enjoy the game and thanks for your continued support,

Scott





Behind Closed Doors with... **ADAM CLAY**

Who are your heroes or people you look up to ?

I look up to a lot of people, but my biggest hero is my dad. Please don't tell my mum though!

Do you play any other sports and if so do you excel in them ?

If I'm totally honest I excel at all sports. I was approached three times this winter while training at Oasis Academy Oldham by football teams wanting to snap me up.

What is the highlight of your career so far ?

No doubt whatsoever ----- all the great friends I've made through rugby.

If you could invite two people for dinner, dead or alive, who would they be ?

Leanne and my old cat Phoebe.

If your house was hit by an earthquake what would you save first ?

Leanne and Cooper . . . that's if he's here yet!

Who's the funniest of your team mates and why ?

Bill Joy for reasons I can't discuss.

Which TV programme would you never miss ?

Sons Of Anarchy.

What was the last book you read ?

'Emma's Diary' (pregnancy book).

What's your favourite type of music ?

Old School Rap.

How do you relax after a match ?

Order food and chill with Leanne and my two cats, Misty Louise and Annie Margaret.

Finally . . . tell me a secret.

In my Man City days, as a youngster, I nut-megged Joe Royle's son three times in a match and I'm still convinced that's why he released me.

A CHAT WITH CHRIS



WELCOME back to Whitebank for the first of two consecutive home games against London Skolars and Gloucester All Golds respectively.

We sit proudly at the top of League One at present and, as I said to Scott just after the game in South Wales, it's great to be there.

He said: "There's only three matches gone." True enough. Nobody knows better than I what can happen during the course of a season, but there haven't been an awful lot of times when we have been at the top of the division, despite our consistent performances over the last few years, so to me it's great to be there.

There remains a mountain of hard work to be done over the next few months, but we have a very committed and determined group here so bring it on.

London Skolars arrive in town today as a team looking for a pick-me-up after some less than London like performances. We must guard against a backlash.

The Ladbrokes Challenge Cup matches last weekend didn't really throw up any surprises apart from Leigh beating Salford and there's more than a few people who wouldn't consider that a shock with the way that they have started the season.

It's fair to say that the move to three groups of eight at the end of the season in the top two divisions has already had a massive impact in the way everybody is talking about the relegation and promotion spots. It looks like being a winner.

On a separate note, some of you will be aware that tomorrow I will be meeting with representatives of some disgruntled fans who have been in touch to air their concerns.

I regard this as a very positive move because, like me, it shows those fans care.

As I have said to them, if we can start a dialogue which has a positive outcome for all concerned, especially the club, then I'm all for it.

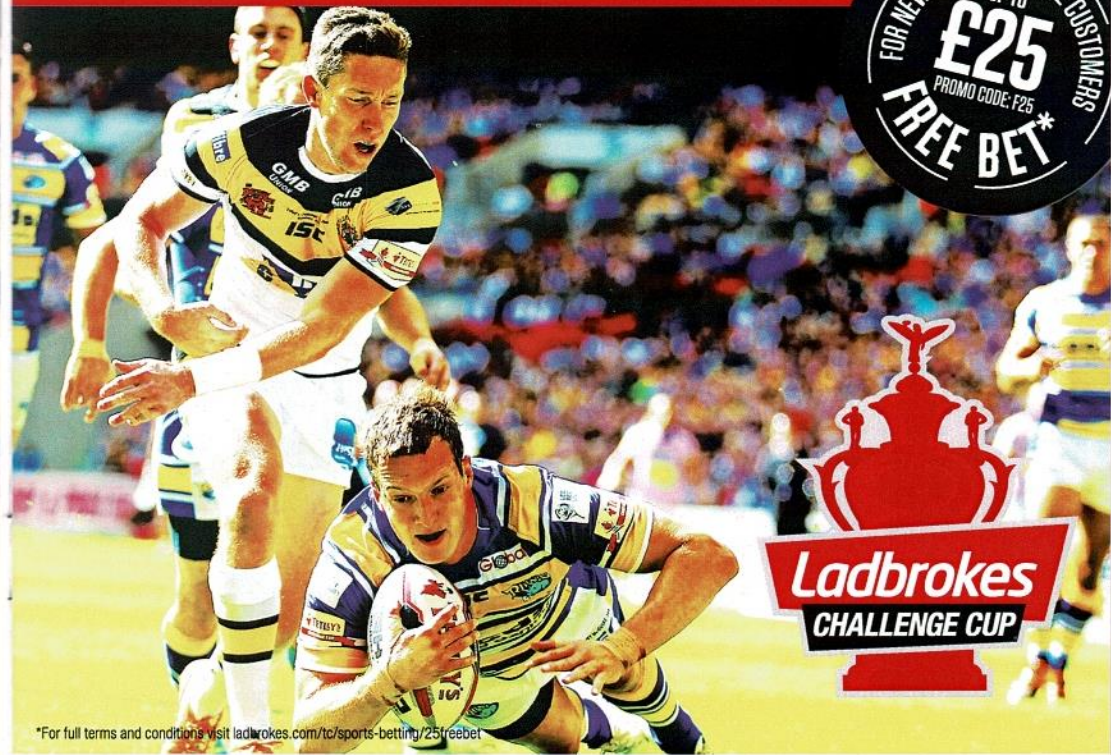
At the risk of becoming boring by repeating myself, I want people to help to take the club forward so let's hope this is a starting point.

As a club, we have plenty to be proud of and plenty to look forward to so let's pull together to accelerate it.

Enjoy the game,

Chris

GOOD LUCK IN THE LADBROKES CHALLENGE CUP



*For full terms and conditions visit ladbrokes.com/tc/sports-betting/25freebet

WHEN THE **FUN** STOPS **STOP**

gambleaware.co.uk

18+



'Play Touch Rugby' back soon

A FUN way to keep fit and active

THE ever-popular Touch Rugby League, which we ran at Oasis Academy Oldham last summer, is back for the new season on Wednesday, May 13 (7pm to 9pm), once again under the leadership of Oldham RLFC's community coach Danny Newall.

Danny, aged 21, comes from Widnes and he has been involved with rugby of both codes since he was a small boy.

He was Neil Roden's assistant with our under-20s last year and he is currently coaching Widnes RU second team as well as assisting with Warrington Wolves academy.

Before he finished playing to concentrate on coaching, he played rugby union for Widnes, Merseyside and Lancashire at youth level.

Said Danny: "Touch Rugby League is the RFL's fastest-growing project and this year they are supporting it more than ever. There are rewards for clubs and individuals who achieve targets and it promises to be another exciting season."

"Last season was the Oldham club's first in Play Touch Rugby and it was a resounding success. The people of Oldham bought into the idea and every week I also brought with me a small contingent from Widnes."

"It's all about having fun. We developed a good team spirit, a lot of new friendships were forged and we always had a laugh together, which was great."

"While 'touch' is fantastic for fitness and losing weight, it's mainly about having fun and enjoying playing rugby."

"It doesn't matter about skill, age or gender. Everybody over the age of 14 is welcome. A lot of people last year surprised themselves with how much they could achieve. We had families playing, brother against sister and father against son, always in a fun environment."

"A lot of people benefited physically, losing weight and gaining confidence in themselves and their abilities."

"We played some great touch rugby and everybody improved as rugby players as the weeks went on."

"2015 will be a great experience for those taking part. The RFL and the Oldham club are again looking to reward players. For example, in 2014 four people won tickets to the Super League Grand final."

"I'm looking forward to getting started again and hopefully we can build on what we achieved last year and get even more people turning out each Wednesday night to enjoy some light-hearted recreational sport."

The cost is £3 per person for each session and those who attended last year all expressed the view that it was a cracking night out and money well spent."

For more information go online to www.playtouchrugbyleague.co.uk or ring the club on 0161 624 9630, ext 70552. Alternatively, just turn up at Oasis Academy Oldham, Hollins Road, Oldham OL8 4JZ on Wednesday, May 13 and Danny will sign you in.



OLDHAM RLFC

PLAY TOUCH RUGBY LEAGUE



ARE YOU OVER 14?

WANT TO KEEP FIT AND HAVE FUN?

COME AND TRY TOUCH RUGBY LEAGUE WITH OLDHAM RLFC



Every Wednesday 7.00pm to 9.00pm
Oasis Academy, Oldham

£20 PER TEAM/£3 PER INDIVIDUAL

To book go to www.playtouchrugbyleague.co.uk

For more information
call 0161 624 9630 ext. 70552
Email oldhamrlfc@btconnect.com





APPEARANCES AND SCORERS

	App	DG	GlS	Tries	Pts
ASHTON, Tom	2	-	-	1	4
BROUGHTON, Jodie	1	-	-	2	8
CLAY, Adam	7	-	-	7	28
CROWLEY, Josh	8	-	-	4	16
DEMPSEY, Tom	1	-	-	-	-
FILES, Adam	6	-	-	-	-
FORD, Jon	4	-	-	3	12
GEE, Sam	7	-	-	2	8
HOLMES, Jack	8	-	-	6	24
HUGHES, Kenny	7	-	-	-	-
JOHNSON, Josh	2	-	-	1	4
JOY, Phil	7	-	-	-	-
JOY, Richard	2	-	-	1	4
LANGTREE, Danny	5	-	-	3	12
LEARMONTH, Micky	2	-	-	2	8
MASON, Nathan	6	-	-	2	8
NEAL, Adam	7	-	-	1	4
NEILD, Steven	3	-	-	-	-
OWEN, Gareth	7	-	-	-	-
PALFREY, Lewis	7	-	31	1	66
ROBERTS, Oliver	1	-	-	-	-
ROPER, Steve	7	1	6	-	13
THOMPSON, Liam	7	1	0	1	4
TYSON, George	7	-	-	4	16
WARD, Jarrod	8	-	-	4	16
WARD, Michael	7	-	-	2	12



Frankie and Bennys are sponsoring Richard Joy and have come up with a great offer for Oldham RLfans on main-menu meal discounts. Left to right: Sketch, the F and B mascot, Richard Joy, Josh Fallows of F and B.

FANCY a meal with 20 per cent off the bill?

That's an offer to all Oldham RL fans from Frankie and Bennys, on the Elk Mill Retail Park, as part of a new sponsorship deal with the club.

Having sponsored hooker Danny Whitmore last year, the Elk Mill branch of the Italian-American restaurant chain, have now backed young prop Richard Joy in the 2015 League One season, which began with a 23-16 victory against derby rivals Rochdale Hornets at Spotland on Good Friday and continued with a 38-10 win against Coventry Bears in our first home game.

As part of the link-up, Roughyeds fans can get up to 20 per cent discount off main-menu meals, not including drinks.

All they have to do is produce an Oldham RLFC season ticket or turn up wearing a club replica shirt, scarf or any other item of club leisure wear as proof

of their support for the Roughyeds.

Kristy Abernethy, general manager of Frankie and Bennys, Elk Mill, said: "We are delighted to continue our association with Oldham Rugby League Club in the 2015 season.

"Richard Joy is a young player just starting out on his semi-pro adventure with his home-town club and we hope our support will help him on his way.

"In the hope also that supporters will give Richard, the team and the club all the encouragement and backing they deserve, we will extend a warm welcome in the restaurant to all Roughyeds supporters and offer them up to 20 per cent discount on main meals."

Our thanks go to F and B for their continued support of the club.

Book review

with the spotlight on John Winton

Tries and Conversions – South African Rugby League Players by Peter Lush and Hendrik Snyders. (With a contribution from the Oldham Rugby League Heritage Trust).

Back in 1910 James Megson and William Mart became the first native-born South Africans to sign for British Rugby League clubs. Since then, South African players have made a significant contribution to our sport.

This just published book is the first comprehensive study of their involvement in rugby league. It covers players who played in Great Britain and Australia; some very successfully but others who never quite adapted to a switch in codes but regardless all their stories are covered.

Prinsloo, Vollenhoven, Killeen, Lake are names that still trip off the tongue of those of us of an age and as Oldham supporters many of us will remember John Winton, Green Vigo and more recently Jamie Bloem pulling on the red and white shirt.

The book also covers the development of rugby league in South Africa in the early 1960s, the Springbok's tour of Australia and New Zealand in 1963 and later Southern Africa's World Cup

participation.

The section of the book surrounding former Rhodesian international full back John Winton has been written by The Oldham Rugby League Heritage Trust. Signed by the Watersheddings club from Wigan midway through the 1964-65 season when Oldham's player-coach and full back Frank Dyson wanted to coach more and play less, Winton, a great goal kicker, made his debut in an Oldham side which during that season contributed no less than six players to the county side and 13,800 turned out to watch the home league match against Swinton. Oldham just a few seasons earlier could rightly claim to be one of the best club sides in the world and now appeared once again to be on the up. Top-of-the-tree rugby league, though, was still a part-time sport Winton combining his rugby with running a second hand car dealership in Wigan in partnership with his former team mate Trevor Lake!

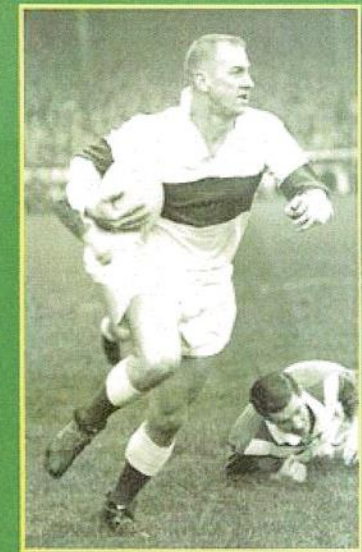
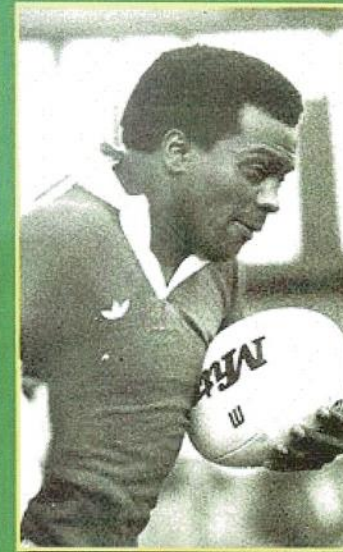
This is a book which will be of interest to all rugby followers of both codes, and readers interested in the development of sport.

Published by London League Publications and available on-line from www.llpshop.co.uk at £13-95 post free in UK.



John Winton is pictured in this team line-up before a top-16 play-off game at St Helens in 1966, which Saints won 15-10. Back (left to right): Peter Smethurst, Stuart Whitehead, Jim McCormack, Geoff Fletcher, Alan Burns, John Donovan, John Winton. Front: Stan McLeod, Tom Warburton, Tommy Canning, Kevin Taylor, Dave Parker, Geoff Sims.

TRIES AND CONVERSIONS



South African Rugby League Players

By Peter Lush & Hendrik Snyders

Foreword by David Barends



Happy 120th birthday Rugby League

.....
Let's raise a glass to 1895, the 22 founding clubs and our very own Joseph Platt.

By Roger Halstead

AS one of the 22 clubs which broke away from the RFU at that historic meeting at the George Hotel in Huddersfield on August 29, 1895, Oldham will be to the fore in celebrations between now and August to recognise Rugby League's 120th anniversary.

Michael Turner's excellent and much-lauded book 'Oldham RLFC, the complete history' reminds us that at the annual meeting of the club, held at the Temperance Hall, Horsedegge Street on July 25, 1895 members voted unanimously to back the committee in supporting rebel clubs over the issue of

'broken time' payments to players for time and pay lost from work because of their rugby commitments.

At the subsequent meeting of clubs at The George, Oldham were represented by Joseph Platt, who was duly elected as the first secretary of the Northern Union, the governing body that would eventually become the Rugby Football League, as we know it today.

The many hundreds of Oldham fans who will have read and treasured Michael's book will know that Joseph Platt occupied his Northern



Union post with distinction for nearly 25 years when the new governing body was, in effect, administered from Joseph's business offices in Queen Street, Oldham where a blue plaque now honours and recognises the major role played by this son of Royton in establishing our great sport of rugby league.

Other founder members were Batley, Bradford, Brighouse, Broughton, Halifax, Huddersfield, Hull, Hunslet, Leeds, Leigh, Liversedge, Manningham, Rochdale, Runcorn, St Helens, Stockport, Tyldesley, Wakefield Trinity, Warrington, Widnes and Wigan.

Plans to celebrate that momentous breakaway 120 years on were announced jointly last week by the RFL and the sport's charitable arm, Rugby League Cares.

Activities will include the Founders Walk, a 120-mile fund-raiser taking in the sites of the 22 founding clubs' grounds, among them Watersheddings, which staged its first Northern Union game on September 21, 1895 when Tyldesley came to town and won 11-3.

Other celebratory activities will include a special 'Back to the Game' round that will allow clubs to pay tribute to their former players and fans.

A commemorative statue will be unveiled at Wembley at this year's Ladbrokes Challenge Cup final, which will be played on August 29, our sport's 120th birthday.

In addition, Rugby League Cares will roll out a Heritage exhibition across the UK and there are plans to put up commemorative blue plaques at the site of each of the 22 original Northern Union grounds.

Such a plaque, of course, is already in place at Watersheddings, situated near the junction of Ripponden Road and Counthill Road, close to what was one of the most iconic stadiums in the North of England and still revered to this day by many thousands of Oldham people.

Later this year, to coincide with the visit of the New Zealand tourists, two more of



the sport's legends will be inducted into the Rugby League Hall of Fame.

Nigel Wood, chief executive of the RFL, will play a key role in all these celebrations, including leading the way on the Founders Walk when people involved in every strand of the game will be encouraged to participate at some stage over the six days to help to raise £120,000 for rugby league's good causes.

Said Nigel: "In a year when we mark Rugby League's special anniversary it is appropriate to reflect on the long and proud history of a sport that means so much to so many people around the world.

"Rugby League was born of a struggle based

upon the right to fair play and that burning desire for equality and openness has resonated across the decades.

"Decisions taken by the sport's founding fathers were bold, dynamic and welcoming – three qualities which are as important and relevant in Rugby League today as they were in 1895.

"This year also provides us with an opportunity to acknowledge the debt of gratitude we owe to the people involved in the 22 founder clubs, whose foresight left a wonderful and indelible legacy.

"I hope as many people as possible embrace the celebrations that will take place over

coming months, be that by taking part in one of the legs of the Founders Walk, getting involved in the activities during the 'Back to the Game' round, or by visiting the wonderful Wembley statue when it is unveiled on the morning of the Ladbrokes Challenge Cup final.

"Now is the time to celebrate the extraordinary journey of which we are all part.

"Happy 120th birthday Rugby League!"

+ FOUR clubs still play in, or on the site of, the stadium they used in the first Northern Union season of 1895 — Batley, Leeds, Wakefield, Widnes.

+ DETAILS of how people can become involved in the Founders Walk in July will be announced in due course. A full itinerary will also be confirmed in the next few weeks.

+ THE Wembley statue depicts five great players whose heroics were deemed to be inextricably linked to Wembley — Martin Offiah MBE, Gus Risman, Alex Murphy OBE, Eric Ashton and Billy Boston MBE.

+ THE 23 Hall of Fame members are Eric Ashton MBE, Billy Batten, Brian Bevan, Billy Boston MBE, Douglas Clarke MM, Neil Fox MBE, Ellery Hanley MBE, Martin Hodgson, Willie Horne, Lewis Jones, Vince Karalius, Roger Millward MBE, Alex Murphy OBE, Martin Offiah MBE, Jonty Parkin, Malcolm Reilly OBE, Gus Risman, Albert Rosenfeld, Garry Schofield OBE, Mick Sullivan, Jim Sullivan, Tom Van Vollenhoven, Harold Wagstaff.

+ RUGBY League Cares, the sport's charity which is dedicated to supporting the rugby league family and its local communities, will be involved in 'Back to the Game' celebrations (details to be confirmed), working on a reunions programme that is already re-engaging with hundreds of former players who had lost touch with the sport.

+ FULL details of the sport's anniversary celebrations will be published in forthcoming match-day programmes as and when they are announced.

Pictures by David Murgatroyd

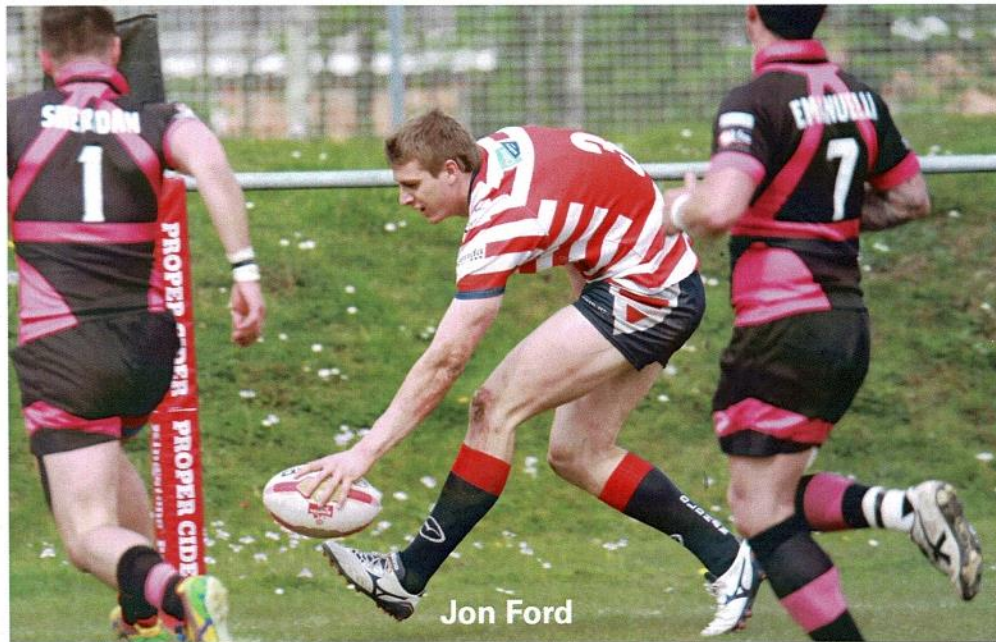
Pictures by David Murgatroyd



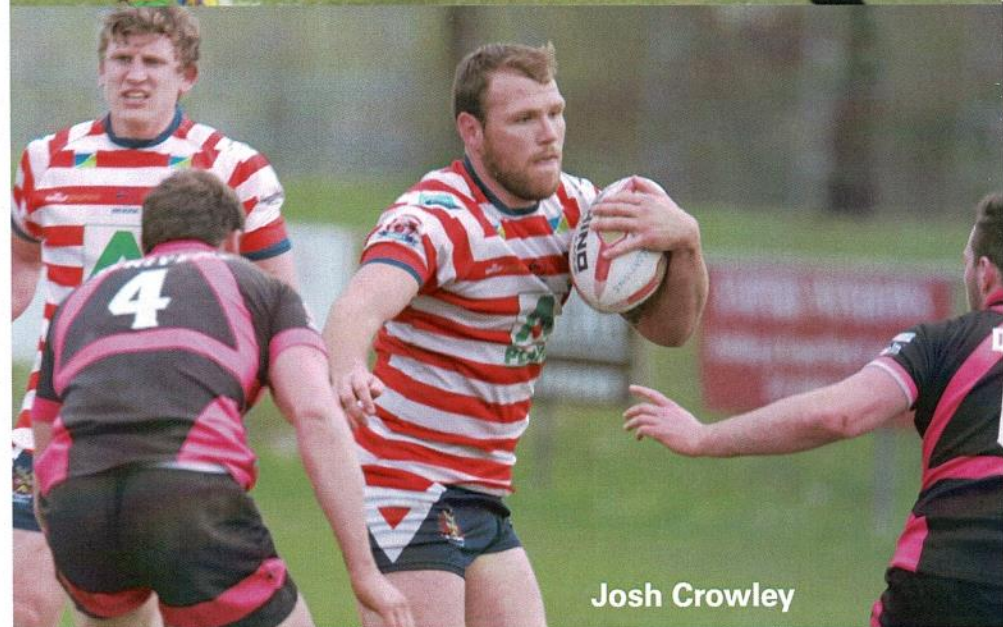
Aiming high

Scott's boys go top after this 50-12 win in South Wales.

Pictures courtesy of Ian Lovell at www.ianlovell.com



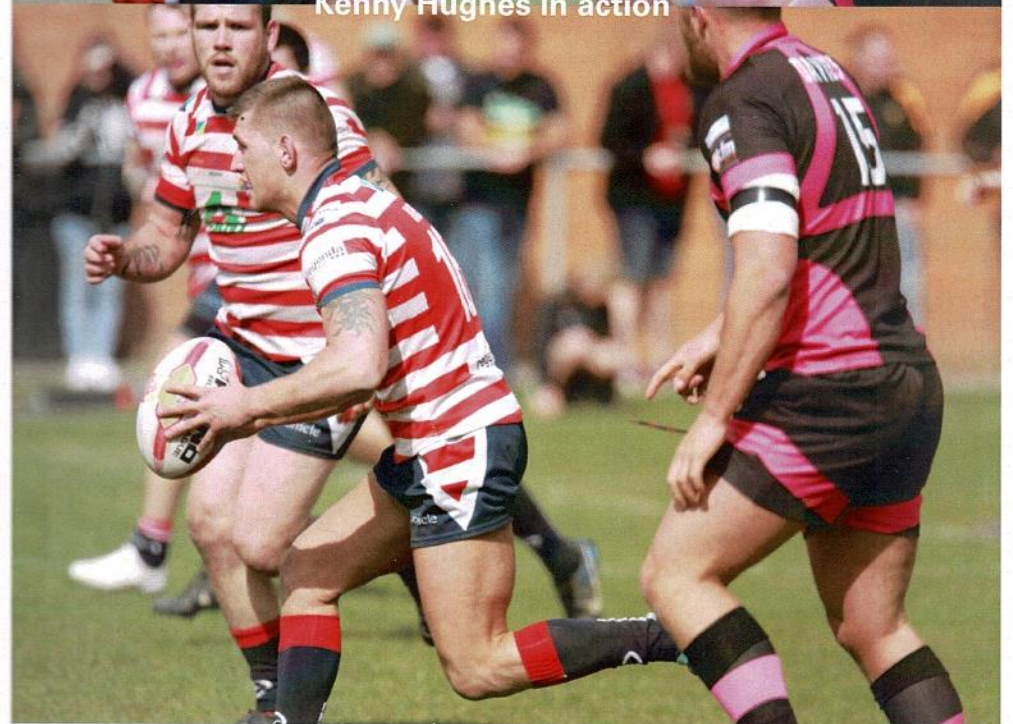
Jon Ford



Josh Crowley



Kenny Hughes in action





FIXTURES & RESULTS

2015 March

L1Cup	Sunday 1st	COVENTRY	H	W 42 - 6
LCC(3)	Sunday 8th	COVENTRY	H	W 46 - 6
L1Cup	Sunday 15th	Barrow	A	W 32 - 10
LCC(4)	Sunday 22nd	Sheffield	A	L 20 - 44

2015 April

KPL1	Friday 3rd	ROCHDALE	A	W 23 - 16
L1Cup	Wednesday 8th	NW Crusaders	H	L 18 - 16
KPL1	Sunday 12th	COVENTRY	H	W 38 - 10
KPL1	Sunday 19th	SOUTH WALES	A	W 50 - 12
KPL1	Sunday 26th	LONDON SKOLARS	H	3:00pm

2015 May

KPL1	Sunday 3rd	GLOUCESTER	H	3:00pm
KPL1	Saturday 9th	BARROW	A	6:30pm
KPL1	Sunday 17th	NEWCASTLE	H	3:00pm
KPL1	Sunday 31st	KEIGHLEY	A	3:00pm

2015 June

KPL1	Sunday 7th	NORTH WALES	H	3:00pm
KPL1	Sunday 14th	OXFORD	H	3:00pm
KPL1	Sunday 21st	SWINTON	A	3:00pm
KPL1	Saturday 27th	GLOUCESTER	A	3:00pm

2015 July

KPL1	Sunday 5th	YORK	H	3:00pm
KPL1	Sunday 12th	ROCHDALE	H	3:00pm
KPL1	Sunday 19th	LONDON	A	3:00pm
KPL1	Sunday 26th	NORTH WALES	A	2:30pm

2015 August

KPL1	Sunday 2nd	KEIGHLEY	H	3:00pm
KPL1	Sunday 9th	HEMEL	A	2:30pm
KPL1	Sunday 16th	NEWCASTLE	A	3:00pm
KPL1	Sunday 23rd	BARROW	H	3:00pm

2015 September

KPL1	Sunday 6th	SWINTON	H	3:00pm
KPL1	Sunday 13th	OXFORD	A	3:00pm



LOOKING FOR PROFESSIONAL PRINT DESIGN?

LOOK NO FURTHER THAN LEMUR GRAPHICS



DESIGN

Send Lemur Graphics your brief and we will pitch the design to you



VIEW

View a proof of your design and make all the changes you require



PRINT

Get a free quote and turnaround time and get it printed!

PREMIUM DESIGN & PRINTING SERVICES FROM LEMUR GRAPHICS

The design boffins here at Lemur Graphics have styled a new look for us and can do the same for you!

We approach each project strategically and creatively and always keep our customer's needs at the front of mind - whether we're building a brand, creating business cards and corporate stationery or marketing and POS materials such as menus, brochures, flyers and signage.

tel: 0161 657 3936 email: info@lemurgraphics.co.uk

web: www.lemurgraphics.co.uk

Lemur House, Fields New Road, Chadderton, Oldham, OL9 8NZ

Chronicle Day Excursions

- ONLY ONE PICK/DROP-OFF POINT ● COURIER SELECTED TRIPS
- RESERVED SEATING ● SWANS TRAVEL COACHES
- A GREAT CHOICE OF DESTINATIONS AND ITINERARIES



From garden shows to shopping trips, stately homes to popular city destinations we have it all covered. Our coach takes you direct to your chosen destination with **NO** multiple pick up points!

For our latest Day Excursion programme please visit

www.oldham-chronicle.co.uk

We also offer great theatre packages for both Manchester and London! Please ring Chronicle Reader Travel on **0161 622 2130** for more details...

What our readers say about our trips:

We welcome group bookings!



"Every trip is fantastic. I enjoy booking with the Chronicle"

Joan Neal



"Always a good day out. Staff are very friendly and helpful"

Lorraine Hunt



HOW WE STAND Kingstone Press League One

	P	W	D	F	A	Diff	Pts
OLDHAM	3	3	0	111	38	73	6
Keighley Cougars	3	3	0	118	48	70	6
Rochdale Hornets	3	2	0	102	53	49	4
Gloucester All Golds	3	2	0	90	54	76	4
Coventry Bears	3	2	0	94	64	30	4
Newcastle Thunder	3	2	0	74	76	-2	4
York City Knights	2	1	0	56	48	8	2
Barrow Raiders	3	1	0	84	94	-10	2
London Skolars	3	1	0	52	82	-30	2
Hemel Stags	3	1	0	70	118	-48	2
N Wales Crusaders	2	0	0	32	38	-6	1
Swinton Lions	2	0	0	26	64	-38	1
Oxford	2	0	0	30	76	-46	0
S Wales Scorpions	3	0	0	30	116	-86	0

A WORD FROM THE EDITOR

THREE wins from three and we're currently sitting proudly on top of the division, so heartiest congrats to all concerned for that.

Keep up the good work boys and you will surely get more support, more in keeping with what your hard work, commitment and GOOD RUGBY deserve.

Talking of support and the size of crowds etc set me thinking . . . not about people I haven't seen here at Whitebank, or watching us on the road, but of folk I have seen watching the Roughyeds or coming to our games in an official capacity.

I'll kick off with David Bradbury. Remember Dave? He signed for the old club as a young lad from the Leigh area in the early 90s and between 1992 and 1997 made 91 senior appearances, scoring 19 tries and growing up at Watersheddings alongside another young tearaway of that time, Barrie Mac.

He and Scott Naylor are buddies from way back when they were both youngsters in Leigh and Scott was delighted to meet him again when he turned up for the first of our three games against Coventry.

Another ex-Oldham player, Kenny Payne, a prop who

played for us in the late 1960s, comes to Whitebank regularly, and it's always good to have a word with him.

John Hough, now living with his family in the Perth region of Western Australia, was at Spotland to renew old acquaintances when we beat our derby rivals on the opening day of the league season. He still looks as fit as a fiddle and capable of giving Gareth, Kenny and Adam a run for their money.

On to the iPro Sport Cup semi-final and we welcomed to Whitebank the Chief Operating Officer of the RFL, Ralph Rimmer, and one of our sport's best and most polished writers in Dave Hadfield of The Independent, and of 'Rugby League World' magazine, a journo colleague whose work I have admired since he was a young fella on the Blackpool Gazette.

So to South Wales last Sunday, and who should put in an appearance at Mountain Ash but none other than the Chief Executive of the RFL, Nigel Wood.

There are those you see who appreciate that rugby league has much to offer at all levels of the game. Long may that continue.

Roger Halstead