



# HEAD-TO-HEAD TODAY'S SQUADS



Coach Scott Naylor sponsored by Muse Developments Ltd

Head Coach: Mark Aston

## ORLFC Squad:

1: Richard Lepori	<b>Sponsored by:</b> Rita Walton
2: Adam Clay	fireplacesuperstore.com
3: Jon Ford	June Hibbert
4: Jack Holmes	The Society Rooms, Stalybridge
5: Jamel Chisholm	Nathan Gibbison
6: Lewis Palfrey	fireplacesuperstore.com
7: Steve Roper	Les and Eileen Davison
8: Phil Joy	Oldham Past Players' Assn
9: Sam Gee	John and Lynda McAndrew
10: Jack Spencer	fireplacesuperstore.com
11: Josh Crowley	John and Lynda McAndrew
12: Danny Langtree	Charlotte Gothard and Daniel Haigh
13: Liam Thompson	ORSA
19: Adam Files	Frankie and Bennys 0161 624 7745
20: Gareth Owen	Bev, Kelly and Paul Hulbert
21: Kenny Hughes	Rita Walton
22: Danny Grimshaw	Pam Taylor/TTX
23: Craig Briscoe	BuySportsKit.com
24: Will Hope	Mick Harrop
25: Tom Ashton	Hanlon and Wright 0161 330 7631
26: Michael Ward	Sylvia and David Patterson
Gary Middlehurst	Patsy Batterton
Joe Burke	John and Lynda McAndrew

Ref: J Roberts; TJs, T Crashley, A Tolley; Res Ref, S Houghton; Match comm, C Morris; Timekeeper, T Randerson; Match assessor, M Singer.

Assistant Coach Lee Spencer sponsored by Muse Developments

## Visitors' Squad:

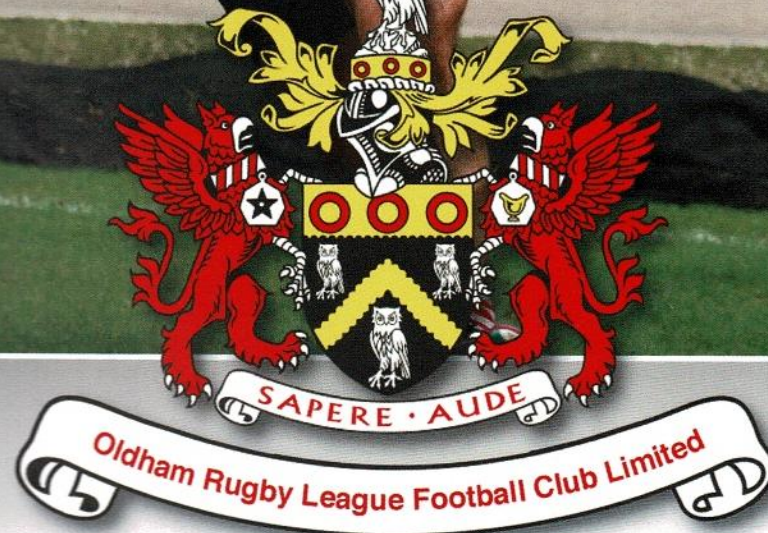
6: Cory Aston
5: Ben Blackmore
20: Jack Blagbrough
23: Greg Burns
9: Keal Carlile
14: Matty Fozard
21: Dave Hewitt
24: Rhys Jacks
13: Matt James
11: Mike Knowles
1: Quentin Laulu-Togagae
19: Garry Lo
17: Mark Mexico
22: Ryan Millar
18: Elliott Minchella
16: Adam Neal
12: Duane Straugheir
10: Mitch Stringer
8: Steve Thorpe
4: George Tyson
15: Scott Wheeldon
2: Rob Worrincy
3: Menzie Yere

# OLDHAM vs SHEFFIELD

Match sponsors: Hanlon and Wright; Oldham Past Players' Association



**Batley take  
a beating**  
See centre spread





Kingstone  
Press

# WIN AN EXPERIENCE YOU'LL NEVER FORGET

★ WIN family tickets to ★  
Magic Weekend or The Summer Bash



Newcastle  
21<sup>st</sup> - 22<sup>nd</sup> May



Blackpool  
28<sup>th</sup> - 29<sup>th</sup> May

Plus hundreds of prizes to  
be won in our weekly prize draws.

Win exclusive Rugby balls, event t-shirts  
and cases of Kingstone Press Cider.

Enter online at [kingstonepress.co.uk](http://kingstonepress.co.uk)

f /kingstonepresscider @KingstoneCider



[drinkaware.co.uk](http://drinkaware.co.uk)  
for the facts

Over 18's only. No purchase necessary.  
Closing date 17.04.16.  
For full terms and conditions visit:  
[www.kingstonepress.co.uk](http://www.kingstonepress.co.uk)



# R.I.P.

It is with deep sadness that we pass on the condolences of everyone at Oldham RLFC to the families of three former players and an ex-club official, all of whom have died recently.

In their different ways they each contributed much to the ongoing story of Oldham RLFC and professional rugby league in our town.

## DICK CRACKNELL,

who died in Huddersfield, aged 87, was a winger in the famous Oldham side of the 1950s, scoring 119 tries in 213 appearances between 1953 and 1959. He signed from Huddersfield for a then club record fee of £4,500 and made Oldham's No 2 shirt his own for nearly six years.

## CYRIL FARNWORTH,

who died in the Royal Oldham Hospital, aged 89, was on the Watersheddings committee for several years in the 1970s and played a major role in the signing of Great Britain prop Terry Clawson, at that time recognised as one of the best props on the world stage.

## DES McKEOWN,

another local man, rose through the ranks in the local junior game and went on to spend four seasons at Watersheddings. At a time when nearly every player was a star, Des played 53 times as a second-row forward, most famously in the 1958 Lancashire Cup final against St Helens when he packed down alongside Charlie Winslade with Derek Turner at loose-forward. He said later that would be a day he would remember until the day he died.

## KENNY PAYNE,

who played for Oldham, Blackpool and Rochdale in the 1960s, had local rugby league connections for most of his life, particularly with Waterhead ARLFC. A keen Oldham fan, he used to own the former Birch Hall Hotel in Lees and one of his grandchildren is Josh Johnson of Huddersfield Giants, who played for Roughyeds on dual registration last season.





# How Scott sees it...

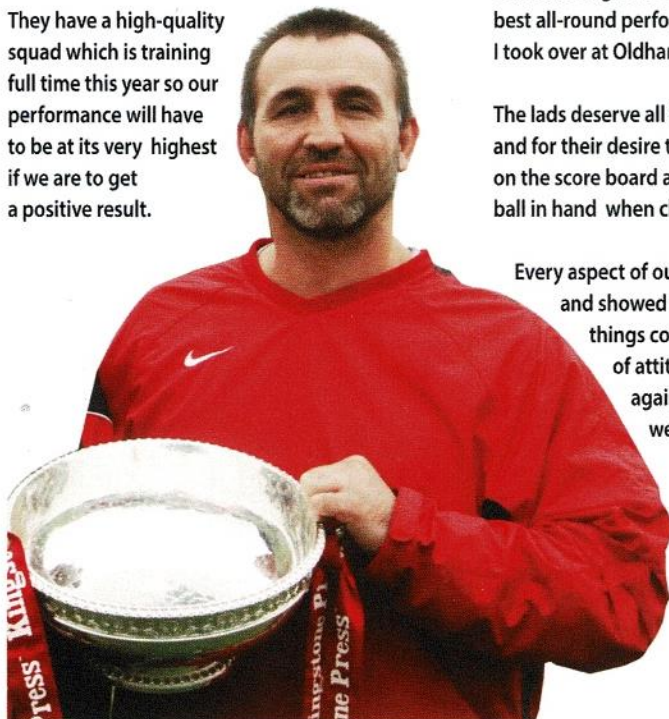
## View from the Roughyeds' dug-out

HELLO everyone and welcome to today's game against Sheffield Eagles at Bower Fold.

Our opponents come to us off the back of an outstanding performance and result against Bradford Bulls.

Sheffield have had a mixed season so far so let's hope their up-and-down performances carry on today.

They have a high-quality squad which is training full time this year so our performance will have to be at its very highest if we are to get a positive result.



Interestingly, we could see some familiar faces in the Sheffield team. George Tyson and Adam Neal moved from Oldham to the Eagles at the end of last year.

They went with our best wishes and hopefully they are enjoying the experience of working for Mark Aston and Keith Senior, who are outstanding coaches and great players from years gone by when we used to bump into each other.

Our match against Batley Bulldogs was probably the best all-round performance we have put together since I took over at Oldham four seasons ago.

The lads deserve all the credit for their commitment and for their desire to stop the Bulldogs from getting on the score board and for their quality on attack with ball in hand when chances arose to score points.

Every aspect of our play was of the highest standard and showed what we are capable of when things come together on the day. That kind of attitude and passion will be required again today if we are to get the result we want against Sheffield.

Many thanks for sticking with us,

Scott



Muse Developments Ltd are sponsors of head coach Scott Naylor AND of his assistant of the past three seasons at Oldham RLFC, Lee Spencer

# Great news for Craig; ...'huge bonus' for club

**CRAIG Briscoe was overjoyed when he went to hospital to get a date for major knee surgery and was told he didn't need it after all.**

"I couldn't believe it. I was speechless," said the Oldham forward, whose rugby world was shattered five weeks ago when scans indicated that he had ruptured the anterior cruciate ligament in his right knee, writes ROGER HALSTEAD.

At one time such an injury would have been career-ending and even now it involves a knee reconstruction, a period on crutches and at least a year out of action.

A top consultant at Wigan Infirmary, however, has since assured 23-year-old Briscoe that in his case the damage was not as serious as first feared and that he should make a full recovery with exhaustive physiotherapy as part of a full rehabilitation programme over the next two or three months.

Describing this latest development as a "huge bonus" for the club, head coach Scott Naylor said Briscoe could be playing again before the end of June, with three months left of the Roughyeds' fight to consolidate in the KP Championship.

He added: "Craig is made up, as you would expect. He thought he was out of the game until next year and now he can see light at the end of the tunnel.

**"It's fantastic news for the lad... and for the club."**

A close-season signing from Barrow, Briscoe was injured in a warm-up game against his former team mates at Craven Park.

He was soon walking normally and he was away from his full-time job as a joiner for only two days.

He said at the time: "I was stunned when they gave me the scan results because my knee seemed to be improving day by day. It certainly wasn't the news I was expecting."

In the next few weeks he came to terms with what, to him, was the worst possible prognosis.

Then came the shock news that was to again turn his sporting world upside down.

"I'm now told that the anterior cruciate is one of a few ligaments that are strained, but are not damaged beyond that," he said.

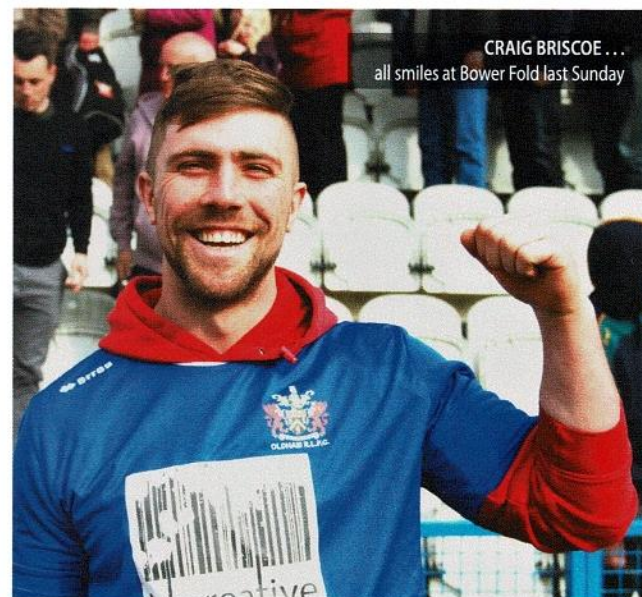
**"I felt I was walking on air when they said I could be playing again in three months. I was smiling for the rest of the day."**

"It still seems a long way to go, but not when compared with what I thought it was going to be.

"I thought my life was going to be put on hold for a full year and now I can see myself playing again in the summer. I can't tell you what that means to me."

While waiting for the op he no longer needs, he has watched Roughyeds in home games against London Broncos, Dewsbury Rams, amateurs Kells in the Ladbrokes Challenge Cup and Halifax. And despite two disappointing defeats over Easter he is unwavering in his belief that coaching staff and players will soon turn things round.

"It isn't a major issue — just a blip and a temporary loss of form that can be fixed quite easily," said the man who has the biggest smile in the Roughyeds' camp right now.



CRAIG BRISCOE ... all smiles at Bower Fold last Sunday



# Top-table topics...

## Chris Hamilton... from the boardroom

WILL the REAL Oldham please stand up. What a difference a week makes!

The performance last Sunday against Batley was a joy to behold as we got stuck in from minute one and gave everybody something to shout about.

Batley came on the back of a tremendous start to the season and were never given a look-in thanks to an all-round team performance that was full of pride and passion.

The lads demonstrated that they are very capable of competing at this level and we now need to make sure that we do our best to get to a consistent level of performance in each game.

Today's opponents, Sheffield, are, of course, one of the full-time teams in the division and, as has been stated many times previously, that presents an enormous challenge to our part-time players. However, it's part of the all-round challenge of the Championship and it's one we will embrace.

The division to date has been very competitive. Nobody is running away with it and as we look to establish ourselves at this higher level that's something from which we can take comfort.

I was chatting this week to Paul Rowley, the ex-Leigh coach, and since leaving Leigh he has been to a lot of different games and he thinks the standard in this division has actually dropped a little this year, which was interesting to hear.

One thing that has struck me about this season is the number of injuries. Of course, Super League is always in the media spotlight so most of you will be aware that lots of clubs have big injury lists. I can't think of one club which hasn't suffered.

You only have to look at the league table. Leeds and Huddersfield are the bottom two and one of the main reasons for that is their large number of injuries to key personnel.

Even at our level clubs are suffering. Last week we had two forwards playing in the centre and injuries left us with only 15 players plus the two dual-reg lads, Tyler and Liam.

I have been wondering why this is happening and whether there may be a particular reason for it.

Are players being pushed too hard?

Is the competition, at all levels, getting more physical? I haven't got answers, but players seem to be picking up a lot more serious injuries than they used to do and if the current trend continues there is sure to be a debate about it.

No doubt things will unravel but it is certainly something to keep your eye on.

Finally, the performance last week gave everybody something to cheer about and once again your support was great. Please keep it up today and with a similar performance we won't be far off.

Enjoy the game.

Christopher Hamilton  
Chairman  
Oldham Rugby League Football Club



# Great Print Builds Great Business.



## Don't get left behind!

Lifelong Roughyeds supporters, Argent Manchester are delighted to announce our arrival in Greater Manchester.

We are dedicated to providing you and your business with the most efficient and cost effective print service in the North West, and with over 35 years experience in the print trade, your business could not be in safer hands!

And to celebrate, we're offering new customers **20% OFF your first order** when you mention The Roughyeds!!!

Our products include:

- Stationery
- Brochures
- Flyers/ leaflets
- Pharmaceutical leaflets
- Books/ Publications
- Newsletter
- Menus
- Signage
- Banners
- Large Format

**20% OFF**

your first order  
when you mention  
The Roughyeds!!!

**BPIf**  
member

Good luck lads!



[manchester@argenthitho.co.uk](mailto:manchester@argenthitho.co.uk)  
[www.argentmanchester.co.uk](http://www.argentmanchester.co.uk)

0161 660 5992



# Blackpool ... here we come

## Sam Gee is ready ... are YOU ?

WE hope to have an army of Oldham fans roaring us on at Bloomfield Road, Blackpool when we play Swinton Lions on Sunday, May 29 (3pm) --- the second day of the RFL's Summer Bash weekend at the famous holiday resort.

a long way to determining our final places in the league table.

If there was ever a special occasion for our borough, our town and Oldham RL fans



All 12 Kingstone Press Championship clubs will play over the Saturday and the Sunday in a festival of rugby league that is the Championship's equivalent to Super League's Magic Weekend.

Our big game against Swinton will be one of three Roughyeds v Lions clashes in the Championship this season and, for both clubs, those three games will go

past and present to turn out in great numbers and to back the boys in Blackpool, then this is it.

Moreover, the Summer Bash weekend will be packed with entertainment on and off the field, including live performances, constant fan engagement and great prizes.

You can also use your Summer Bash ticket to get exclusive deals at Walkabout Blackpool (including 25 per cent discount on food); a 20 per cent discount at the Adrenalin Zone on South Pier; discounts on Blackpool's transport services; and more.

Whether you want to watch one match or SEVEN (The Saturday programme kicks off with the iProSport Cup Final as an 'extra') ticket prices represent fantastic value and they are available now from the Oldham RLFC office inside the ground at Whitebank Stadium each weekday, Monday to Friday between 9am and 1.30pm. The office telephone number is 07904898177.

Club season-ticket holders get Summer Bash tickets for HALF PRICE which means, for example, if you have an Oldham season ticket and you qualify as a concession you could, if you wished, watch all seven games over two days for £7.50 (unreserved seat). How good is that ?

PLEASE GET YOUR TICKETS FROM WHITEBANK BECAUSE THAT WAY YOU ARE ACTIVELY SUPPORTING ROUGHYEDS AND IF YOU BUY RESERVED SEATING YOU WILL BE IN THE OLDHAM BLOCK, SURROUNDED BY YOUR FRIENDS AND FELLOW OLDHAMERS.

It perhaps isn't widely known that all Championship clubs have to contribute towards the costs of staging Summer Bash but, like the other 11, the more tickets we sell from Whitebank the more of our initial outlay we will recoup.

Please note that all rules and regulations, including ticket prices and concessionary qualification, are governed and laid down by the RFL.

Tickets are available in two categories ---- CAT. 1, reserved seats in West Stand (same side as the tunnel); CAT. 2, unreserved seats in North Stand and in South Stand (behind the posts at each end).

Concessionary tickets are available to 65s and over; students with valid ID, to be shown on the day; 16s and under; serving Military with valid ID, shown on the day.

## TICKET PRICES

One-day tickets (available ONLY for the day your team plays, Sunday in our case): reserved seats (Cat 1), £30 adults, £15 concessions; season-ticket holders, £15 adults, £7.50 concessions; unreserved seats (Cat 2), £20 adults, £10 concessions; season-ticket holders, £10 adults, £5 concessions.

Two-day (weekend) tickets: reserved seats (Cat 1), £50 adults, £25 concessions; season-ticket holders, £25 adults, £12.50 concessions; unreserved seats (Cat 2), £30 adults, £15 concessions; season-ticket holders, £15 adults, £7.50 concessions.

## POINTS TO NOTE

- 1: Alternating between North and South Stands (both unreserved) is NOT permitted.
- 2: Weekend (two day) fans get only ONE ticket, which must be retained for the Sunday.
- 3: Children under 2 go FREE, but MUST have a ticket
- 4: Wheelchair users MUST make pre-arrangements with the RFL.
- 5: Ambulant disabled can get tickets from the Oldham club.
- 6: One-day tickets only available in our case for the Sunday.
- 7: Pass-outs available both days (hand stamped and original ticket needed to get back in).
- 8: Club transport to Blackpool is available on the Sunday (the day we play Swinton) . We leave Whitebank at 10am and return at 7pm, which allows people to watch all three games that day. Cost is £10 per person.

## HEAD TO HEAD

Saturday, May 28: noon, iProSport Cup final; 2.30, Sheffield Eagles v London Broncos; 4.45, Workington Town v Whitehaven; 7.00, Bradford Bulls v Leigh Centurions.

Sunday, May 29: 12.45, Dewsbury Rams v Batley Bulldogs; 3.00, OLDHAM v Swinton Lions; 5.15, Halifax v Featherstone Rovers.



# A WALK DOWN MEMORY LANE

Submitted By Oldham RL Heritage Trust



**THE Roughyeds first encountered the Eagles on October 11, 1987 in a Second Division match at Watersheddings. Oldham won 44-20 and completed the double the following March with a 28-15 victory in Sheffield.**

The most significant match between the clubs was the 1992 Divisional Premiership Final at Old Trafford. On their two previous appearances at the home of Manchester United, Oldham had won famous and dramatic victories against Featherstone in 1988 and Hull KR in 1990.

However, on this occasion it wasn't to be as the Eagles, superbly led by Darryl Powell and Mark Aston, won 34-20. After being 16-4 down at half-time and having had prop Ian Sherratt sent off, Oldham had fought back and levelled the score at 20-20 with a wonder try from winger Scott Ranson, but Sheffield finished strongly and, with former Roughyeds' favourites Hugh Waddell and Charlie McAlister in their line-up they ended up

worthy winners with 14 points to spare.

Sheffield were also the opposition for the last-ever 'senior' league match at Watersheddings on August 25, 1996 when Oldham won 34-25 with Ranson again the star man with a hat-trick of tries.

The 'new' club first played the Eagles on April 2, 2000 in Sheffield at the Don Valley Stadium. This was something of a landmark match for Oldham, who were in a transitional period with a number of new players being introduced to the team.

Two of them were to make a big impression on the club over the next few years. Firstly there was a starting line-up debut for Phil Farrell and he was joined off the bench by Neil Roden. Both lads were from Wigan and had an immediate and positive impact on the club.

The week before Oldham had succumbed to a 61-26 defeat at Featherstone but on this day the new-look team, under the leadership of new captain David Gibbons, put in a much improved display.

Sheffield started well with Mark Aston's astute kicking game proving troublesome for the Roughyeds. However, the defence remained firm and midway



through the half the visitors began to take control.

After 20 minutes the Oldham threequarters put together some slick handling which culminated in Shayne McMenemy powering over with two defenders hanging on. Ten minutes later a break from dummy half by John Hough released Warren Barrow, who cut infield, drew the attentions of the full-back, and gave Mike Ford a clear run to the line.

Shortly after the interval a high kick from David Gibbons was palmed back by Joey Hayes and scooped up by Farrell to score. Five minutes later a strong break by Jason Clegg paved the way for skipper Gibbons to go in again and finally, on the hour, McMenemy, Farrell and Hough combined to send in Pat Rich.

The Oldham centre converted this one and three of the other tries as the Roughyeds accumulated 28 points in a 40-minute spell either side of half-time.

Five minutes from the end John Strange scored a consolation try for the Eagles but the day belonged to Oldham with Farrell putting in a man-of-the-match display on both attack and defence.

The teams lined up like this:

## SHEFFIELD:

Johnson; Wray, Strange, Kite, Williamson; Aston, Brown; Wittenberg, Robinson, Thompson, W. Freeman, Morley, Vasslakopoulos.

Subs: Hanlon, Brent, Bruce, G. Freeman.

## OLDHAM:

Sibson; Hayes, A Gibbons, Rich, Barrow; D Gibbons, Ford; Casey, Hough, Clegg, Farrell, McMenemy, Campbell.

Subs: Roden, Holland, Doran, Sinfield.

## Oldham scorers:

Goals, Rich (4); tries, McMenemy, Ford, Farrell, D Gibbons, Rich.

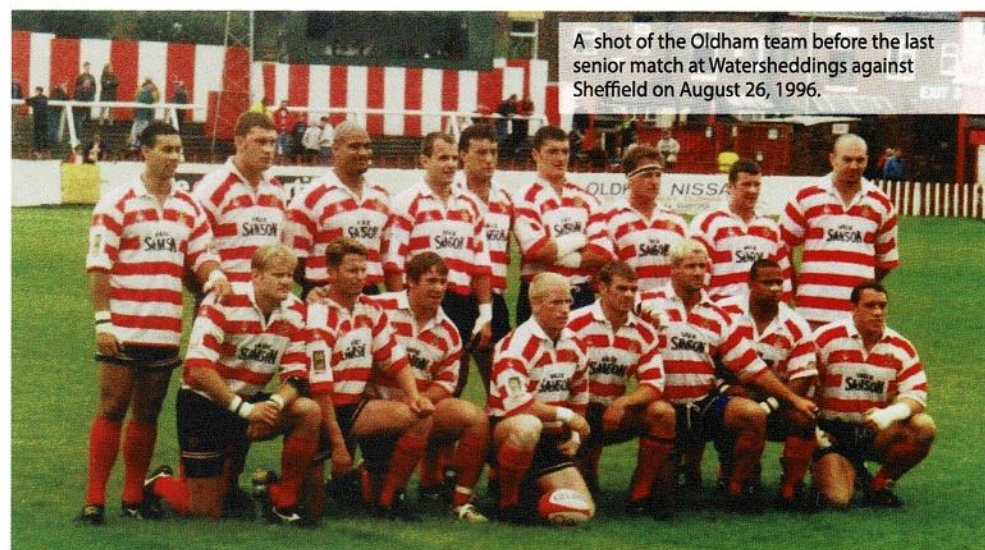
Attendance: 1,212

Referee: Mr. R. Laughton (Barnsley)



Phil Farrell, man of the match on April 2, 2000

Visit [www.orl-heritagetrust.org.uk](http://www.orl-heritagetrust.org.uk)



A shot of the Oldham team before the last senior match at Watersheddings against Sheffield on August 26, 1996.





# Oldham 28 Batley Bulldogs 12

Sunday 3rd April 2016



Photography: David Murgatroyd



# Roughyeds' Gallery

Portraits of the boys battling for Oldham in our first season at this level



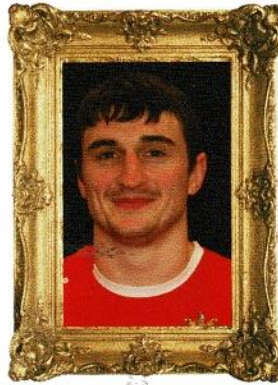
**TOM ASHTON**

DOB 26-6-92, centre, formerly with Sheffield Eagles. Joined us last season, but hasn't had the best of luck, first picking up a knee injury that limited his 2015 appearances to six and this year needing emergency surgery on a burst appendix after making a strong start to the Championship campaign.



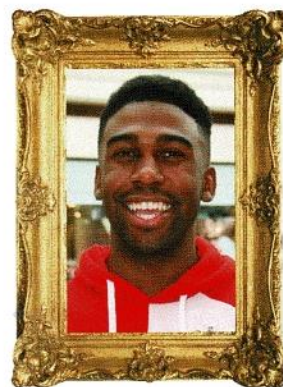
**CRAIG BRISCOE**

DOB 8-12-92, back-row, ex-Leigh and Barrow. One of our new signings this year. Desperately unlucky to pick up a serious knee injury in a pre-season game at Barrow. Hasn't played since, but latest news is encouraging; he could be back by June and he can't wait. Tackling machine.



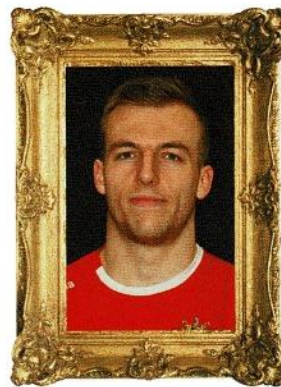
**JOE BURKE**

DOB 18-5-90, prop, played all 30 games for North Wales Crusaders in 2015, 28 starts. Signed for us with the season several weeks old and made his debut against Halifax on Good Friday. Born in Newport, he has also played for South Wales Scorpions and has proudly represented Wales several times.



**JAMEL CHISHOLM**

DOB 7-11-92, winger, began his career with Leeds Rhinos where he built a reputation as a real flier. Famously won a pro sprint at Headingley featuring several of our sport's fastest backs. Another new signing this year. Spotted playing well for Skolars while on loan from York.



**ADAM CLAY**

DOB 7-10-90, winger, in his third season with Roughyeds, having scored four tries in nine outings in 2014 and then, in his first full year here, top-scoring with 20 tries in 23 games in 2015. Strong, as well as quick, he works hard when helping out the forwards in making hard yards.



**JOSH CROWLEY**

DOB 24-9-91, second-row, one of Scott Naylor's first signings back in 2013. An ever-present in 2013, 2014 and 2015 and twice named by our head coach as joint player of the year with his second-row partner Danny Langtree. Played in his youth for Warrington and Widnes.



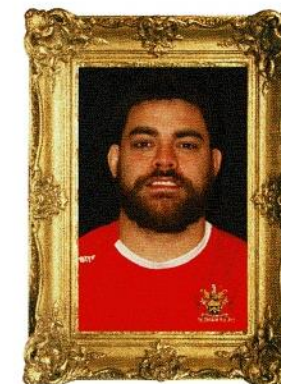
**ADAM FILES**

DOB 7-1-93, hooker, in his fourth season here, having first signed on loan from Salford in 2013. Had a brilliant first season, aged 20, scoring 15 tries in 24 games, mainly from dummy half. Injury restricted him to four appearances in 2014, but he was back with 24 games out of 28 in 2015's promotion push.



**JON FORD**

DOB 1-11-93, centre, another former Salford man. Scored 21 tries in 2013, 13 in 2014 and 11 in 2015, totalling 45 in 47 games overall – a remarkable try-per-game ratio. Here initially in various spells on loan or dual-registration, but now a fully-fledged Oldham player in his fourth season.



**SAMMY GEE**

DOB 28-2-87, vice-captain, play-anywhere Sam has turned out at hooker, second-row, loose-forward, full-back and centre since signing in 2013 as one of Scott Naylor's 'Originals'. Started in Union before switching codes with home-town Wigan. Came here via London Skolars and Whitehaven.



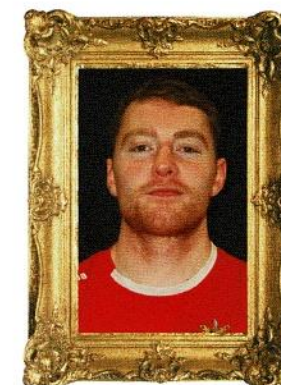
**DANNY GRIMSHAW**

DOB 25-2-86, half-back, a Roughyeds new boy this year, formerly with York and then Hunslet where he had six seasons, also playing at loose-forward sometimes. Hugely experienced, this Charlston-born (near Featherstone) half-back will be a key operator in a decision-making role.



**JACK HOLMES**

DOB 5-1-94, centre/wing, in his second season as an Oldham player, having scored 15 tries last year, second only to Adam Clay's 20. Played first for Leigh, then Halifax, then back to Leigh before becoming a Roughyed and making the left-wing berth his own in our 2015 promotion year.



**WILL HOPE**

DOB 2/6/93, back-row, played 12 Championship games for Sheffield in 2014 while on loan from Salford. Took time out in 2015, but returned to the game with Roughyeds near the end of the season, playing in the last three games and helping us to win two trophies. Irish international.





**KENNY HUGHES**

DOB 30-3-90, hooker, one of four members of the squad to sign in 2013 after a couple of seasons in what was then our trophy-winning reserve-team squad. A product of St Helens academy, he is a clever footballer with good hands and vision, qualities that enabled him to help out at half-back in 2013.



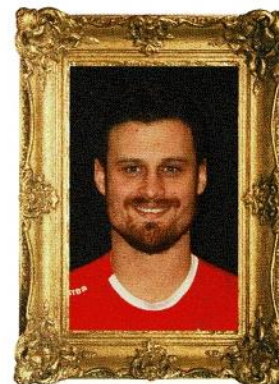
**PHIL JOY**

DOB 4/9/91, prop, another from our own production line. Pushed through the reserves then became one of Naylor's 'Originals' in 2013. A first-team regular ever since, Oldham-born Phil played in 72 games in his first three seasons and is still gaining experience in the engine room.



**DANNY LANGTREE**

DOB 18-2-91, second-row, also came through the reserves. Given his senior debut by caretaker boss Martin Roden at the end of the 2012 season and was immediately snapped up by Naylor when he arrived as head coach later that year. Twice named joint player of the year.



**LEWIS PALFREY**

DOB 25-2-90, half-back, club captain. Ex-Salford, Whitehaven, Batley. League One player of the year in 2015 when, in all competitions, he scored 129 goals, 11 tries, two drop goals for 304 points. Only Martyn Ridyard of Leigh (345) and Josh Mantellato of Hull KR (334) scored more.



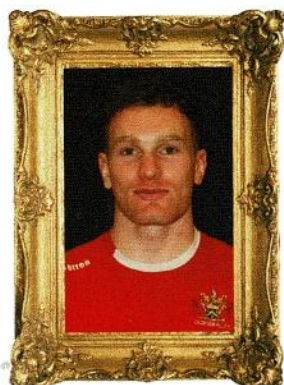
**STEVE ROPER**

DOB 10-11-86, half-back. In his third season, having signed midway through 2014. Key man with Palfrey in the promotion year, operating on the left with his captain on the right. 'Ropes' and Lewis were tactical and goal kickers, the former taking over goalkicking when Lewis wasn't on the field.



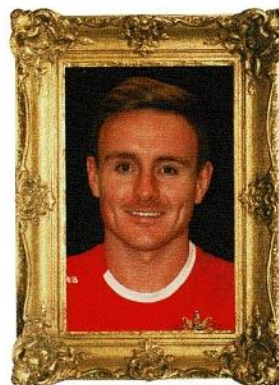
**JACK SPENCER**

DOB 21-12-90, prop, played 16 times for Halifax last season after spells with Barrow and overseas in Australia and France. One of our four close-season signings in the winter of 2015-16, he is in his first season at Bower Fold, where he has made a strong start. Can play anywhere in the pack



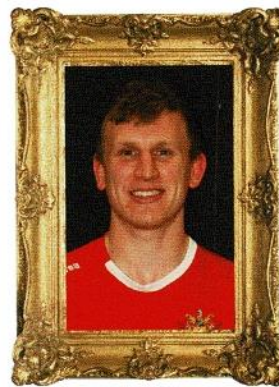
**RICHARD LEPORI**

DOB 22-10-91, full-back, first Salford, then Castleford (while studying in Leeds), then Oldham in 2013. Left for Australia in 2014, then returned to Whitebank, in time to play seven games in last year's promotion push, after a spell with Whitehaven. Played several times for Italy.



**GARY MIDDLEHURST**

DOB 24-10-83, back-row, one of our most recent signings. Earned a big reputation as a 'good un' by giving sterling service to Rochdale and North Wales Crusaders, where he twice won players' player-of-the-year awards. Pound for pound plays well above his weight. Man with a big heart.



**GARETH OWEN**

DOB 3/7/92, hooker, Oldham born, came through the ranks at Salford where he played 30-plus Super League games. Eight games for us on loan in 2014, then 25 out of 28 in the 2015 promotion campaign. A key operator behind play-the-ball. Also played 15 games for Sheffield on loan in 2014.



**LIAM THOMPSON**

DOB 3-1-92, back-row/prop. Former England schoolboys player who rose through the ranks at Wigan and Widnes. Another of Naylor's 'Originals' though his 2013 and 2014 seasons were affected by injury. His luck changed last year when he played a massive part in our two-trophy triumph.



**MICHAEL WARD**

DOB 10-2-91, prop, often used for impact off the bench. Rousing runner. First played in our reserves as a 16-year-old on the wing. Graduated to centre, then second-row, now prop. Oldham-born, he made his senior debut in 2012 and has been a regular ever since with more than 70 appearances.

#### Hull KR cup tie next Saturday

OUR Ladbrokes Challenge Cup fifth-round tie against Hull KR at the KC Lightstream Stadium will take place next Saturday, April 16, KO 2pm.

Tickets are priced at £12 adults and £6 concessions when bought in advance, rising to £15 adults and £10 concessions on game day.

During the coming week they will go on sale from Whitebank (inside the ground) from 9.30am to 1.30pm on Monday and Tuesday; from 9.30am to 3pm on Wednesday; and from 9.30am to 4pm on Friday.

As gate money will be shared, season tickets will not be valid.

Said our chairman Chris Hamilton: "Rovers would have preferred to play next Friday night, but in fairness to them they didn't make a formal request because they realised it would be unfair on us and on our supporters. They think Saturday will be next best for attracting their fans and we have no problem with that." Our next Championship fixture after the cup-tie is at Whitehaven on the following Saturday, April 23 (6.30pm) so that's another reason why it's beneficial to us to play at Hull KR next Saturday; it gives us a full week for recovery, rehab etc as we get ready for our trip to Cumbria.



GOOD LUCK TO ALL THE TEAMS IN THE 2016

# LADBROKES CHALLENGE CUP



\*For full terms and conditions visit [ladbrokes.com/tc/sports-betting/50freebet](http://ladbrokes.com/tc/sports-betting/50freebet)

WHEN THE **FUN** STOPS **STOP**

[gambleaware.co.uk](http://gambleaware.co.uk) 18+

## Full time team now...

& Eagles dare to dream!

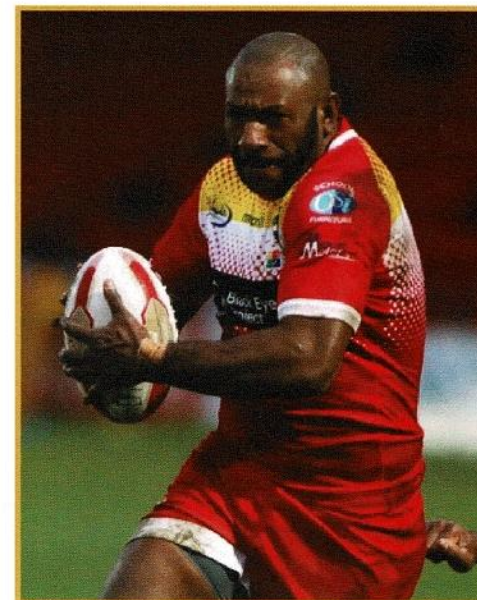


AS Sheffield Eagles went full time for the 2016 season a host of players departed and a number joined the club with Mark Aston going for youth to fill several of his slots.

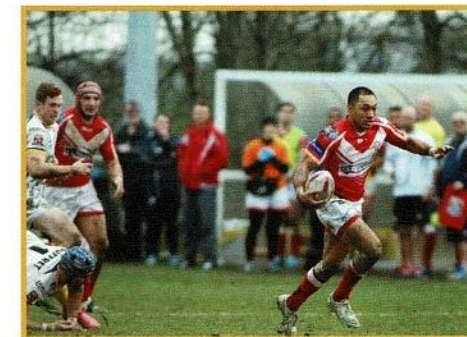
They included Adam Neal and George Tyson, who played significant roles in our promotion push from League One last year, and Matty Fozard from St Helens.

### Three to watch:

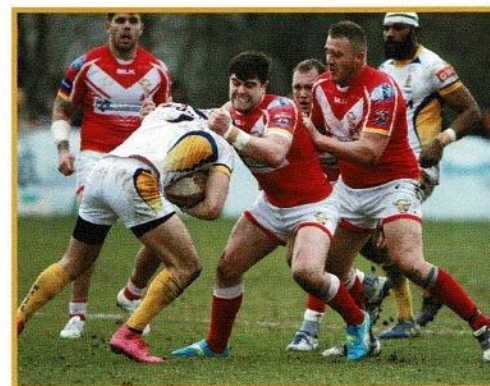
**Menzie Yere** – the explosive PNG centre joined the Eagles after the 2008 World Cup and has been a firm fans' favourite with Sheffield supporters since his arrival. He is a threat out wide, possessing pace and strength.



**Quentin Lauu Togagae** – 'QLT' or 'Q' as he is known joined the Eagles in 2011 and has scored 149 tries for the Eagles in 164 appearances. The full back is known to break the line and causes problems for defences with his footwork and passing.



**Matty Fozard** – joined from Super League side St. Helens. The hooker has powered his way over the line on several occasions already this year and is quick off the mark from the play the ball. Keep an eye on this promising youngster.







# FIXTURES & RESULTS



Comp,	Date	Opponents	Venue	Kick Off	Result	Att
<b>FEBRUARY</b>						
KP Champ	Sunday 7th	London Broncos	H	3.00pm	L 0:22	767
KP Champ	Sunday 14th	Leigh Centurions	A	3.00pm	L 48:18	3,371
KP Champ	Sunday 21st	Dewsbury Rams	H	3.00pm	W 38:16	816
KP Champ	Sunday 28th	Featherstone R.	A	3.00pm	L 20:6	1,739
<b>MARCH</b>						
KP Champ	Sunday 6th	Bradford Bulls	H	3.00pm	Post*	637
KP Champ	Sunday 13th	Workington T	A	3.00pm	L 23:12	385
CC (4)	Sunday 20th	Kells	H	3.00pm	W 40:6	1046
KP Champ	Good Fri 25th	Halifax	H	3.00pm	L 28:42	823
KP Champ	Mon 28th	Swinton Lions	A	3.00pm	L 18:28	
<b>APRIL</b>						
KP Champ	Sunday 3rd	Batley Bulldogs	H	3.00pm	W 28:12	814
KP Champ	Sunday 10th	Sheffield Eagles	H	3.00pm	TBC	TBC
CC (5)	Sunday 17th					
KP Champ	Saturday 23rd	Whitehaven	A	6.30pm	TBC	TBC
<b>MAY</b>						
KP Champ	Sunday 1st	Featherstone R	H	3.00pm	TBC	TBC
CC (6)	Sunday 8th					
KP Champ	Sunday 15th	Leigh Centurions	H	3.00pm	TBC	TBC
KP Champ	Sunday 22nd	Halifax	A	3.00pm	TBC	TBC
Summer Bash	Sunday 29th	Swinton Lions	BR*	3.00pm	TBC	TBC
<b>JUNE</b>						
KP Champ	Sunday 5th	Batley Bulldogs	A	3.00pm	TBC	TBC
KP Champ	Sunday 12th	Dewsbury Rams	A	3.00pm	TBC	TBC
KP Champ	Sunday 19th	London Broncos	A	3.00pm	TBC	TBC
KP Champ	Sunday 26th	Whitehaven	H	3.00pm	TBC	TBC
<b>JULY</b>						
KP Champ	Friday 1st	Sheffield Eagles	A	8.00pm	TBC	TBC
KP Champ	Sunday 10th	Swinton Lions	H	3.00pm	TBC	TBC
KP Champ	Sunday 17th	Bradford Bulls	A	3.00pm	TBC	TBC
KP Champ	Sunday 24th	Workington T	H	3.00pm	TBC	TBC
CC (S/F)	Sunday 31st					

NOTE: The above 23 Kingstone Press Championship fixtures \*(11 home and 11 away plus the additional Summer Bash game against Swinton Lions at Bloomfield Road, Blackpool) will be followed by another seven in the Super 8s, these to be played on Sundays throughout August and September.

\*NOTE: The postponed home game against Bradford Bulls has been provisionally rearranged for Sunday, May 8 at Bower Fold (3pm), but it will only happen if both clubs are out of the Ladbrokes Challenge Cup by then.

## Chronicle Day Excursions

- ONLY ONE PICK/DROP-OFF POINT ● COURIER SELECTED TRIPS
- RESERVED SEATING ● SWANS TRAVEL COACHES
- A GREAT CHOICE OF DESTINATIONS AND ITINERARIES



From garden shows to shopping trips, stately homes to popular city destinations we have it all covered. Our coach takes you direct to your chosen destination with **NO** multiple pick up points!

For our latest Day Excursion programme please visit

**[www.oldham-chronicle.co.uk](http://www.oldham-chronicle.co.uk)**

We also offer great theatre packages for both Manchester and London! Please ring Chronicle Reader Travel on **0161 622 2130** for more details...

**What our readers say about our trips:**

**We welcome group bookings!**



**"Every trip is fantastic. I enjoy booking with the Chronicle"**  
Joan Neal



**"Always a good day out. Staff are very friendly and helpful"**  
Lorraine Hunt





# SURPRISE! ooo

## First impressions count... FACT!

the way in which you introduce yourself to someone,

your appearance... your style...  
the things you say...  
the way you say them...

all say something about you,  
to people who  
do not yet know you...

It's your individuality,  
your essence... your brand...

## And your company is no different...

how you look, what you do, how you do it...  
all influence your customers' view of your business.

It's what you believe in... it's what you are.

From your logo...  
to your slogan...  
to your business card...  
to your brochures...  
to your shop sign...  
to your website...  
to your newspaper advert...  
and so on...



**Call us on 0161 425 4700**

## And this is what WE do...

for you... And we've been doing this for over 35 years, for companies large and small... companies just like yours.

So if you are thinking of starting a business, or would like to give your existing business a well needed 'lift',

then please give us a call, and let's chat...



GRAPHIC DESIGN | WEB DESIGN | MARKETING

## Official Kit and Apparel Suppliers



**WWW.BUYSPORTSKIT.COM**

