

Salford 26

(Red with white V)

1. PAUL CHARLTON
2. KEITH FIELDING *try*
3. DAVID WATKINS *2 tries 4 goals*
4. CHRIS HESKETH *2 tries*
5. MAURICE RICHARDS
6. KEN GILL
7. PETER BANNER
8. GRAHAM MacKAY
9. PETER WALKER
10. DOUG DAVIES
11. MIKE COULMAN *try*
12. COLIN DIXON
13. JOHN KNIGHTON
14. BOB PROSSER
15. ALAN GRICE

Referee:

Mr. H. MASON (Halifax)

Oldham 12

(Cherry and White)

1. MARTIN MURPHY
2. CHRIS O'BRIEN
3. MIKE ELLIOTT
4. STUART BOTTOM *3 goals*
5. IAN HOLLAND
6. DAVID TREASURE *try*
7. MICK McCONE
8. TERRY CLAWSON
9. KEVIN TAYLOR
10. KEITH ASHCROFT *try*
11. BRIAN GREGORY
12. FRED HALL
13. TONY PETERS
14. JOHN BLAIR
15. BRIAN HOUGHES

Touch Judges:

Messrs. D. Mairs and J. Meadows

SALFORD PLAYER OF THE MATCH

COMPLETE the coupon at the foot of this page to nominate the Salford player who, in your opinion was the most outstanding (for skill, entertainment, workrate, etc.) in this match.

Drop your voting slip in at the Secretary's office on your way home, or post it—to reach us no later than three days after the game—to "Player of the Match", Salford Football Club, Willows Road, Weaste, Salford 5, Lancs.

Name

Address

In my opinion, Salford's Player of the Match against OLDHAM was:

SALFORD PLAYER OF THE YEAR

AT THE END of the season, the Salford player who has received most Player of the Match votes over the whole season will become Salford Player of the Year.

ALL voting slips will be kept and the Player of the Year will be asked to draw out one at random when he receives his award. The lucky voter will receive a £20 cash prize, so don't forget your name and address when you cast your vote—YOU could be on a winner as well as the player for whom you vote.

Second row men Colin Dixon and Mike Coulman received most votes for last weekend's match against St. Helens.

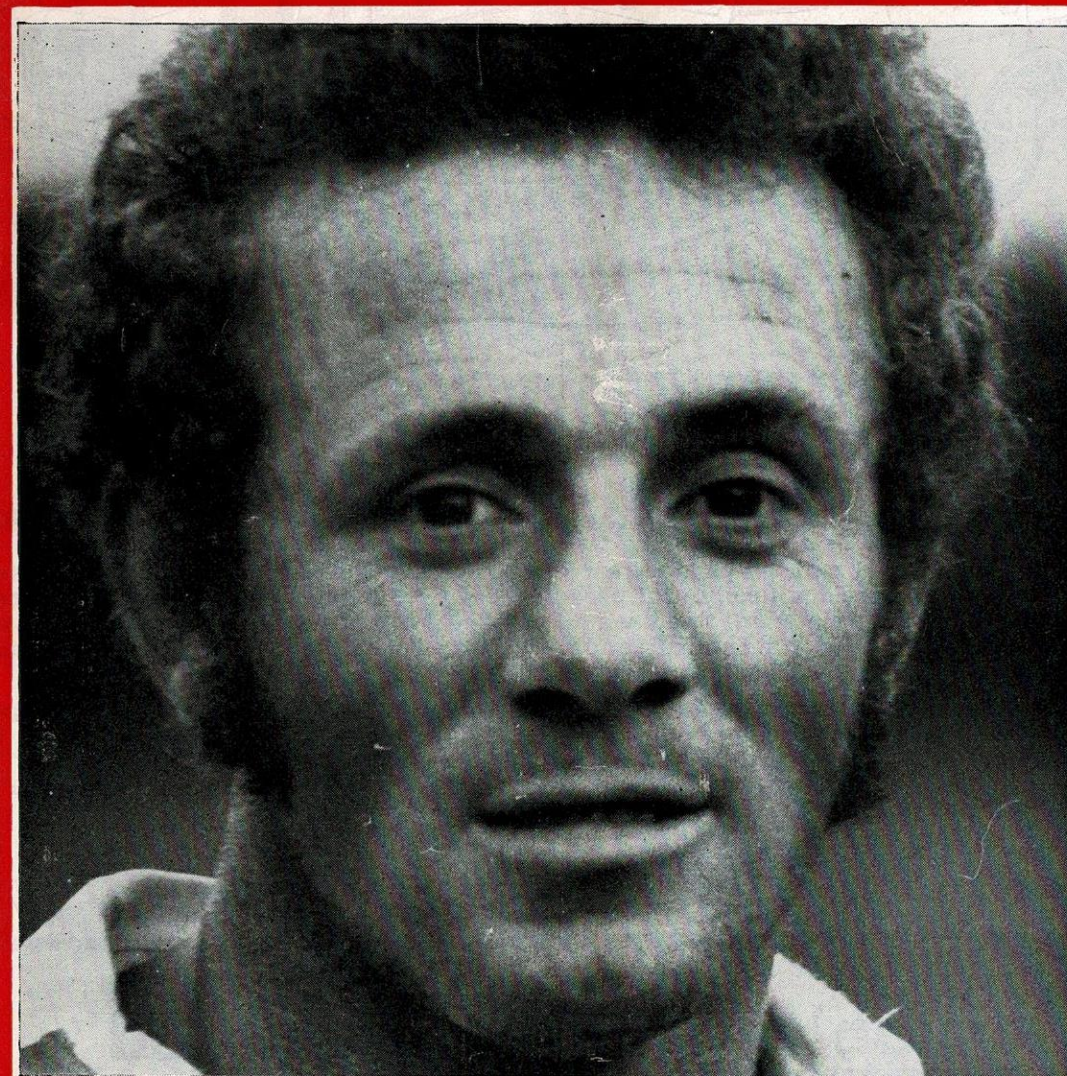
Colin, current holder of the Salford Player of the Year trophy, pipped Mike by one vote, however, to become last week's Salford Player of the Match.

● Only voting slips from "Salford Scene" will be accepted—plain paper votes will not be considered.

SALFORD 26 v. OLDHAM 12 SCENE

Vol. 2
No. 17
3.2.74

6p



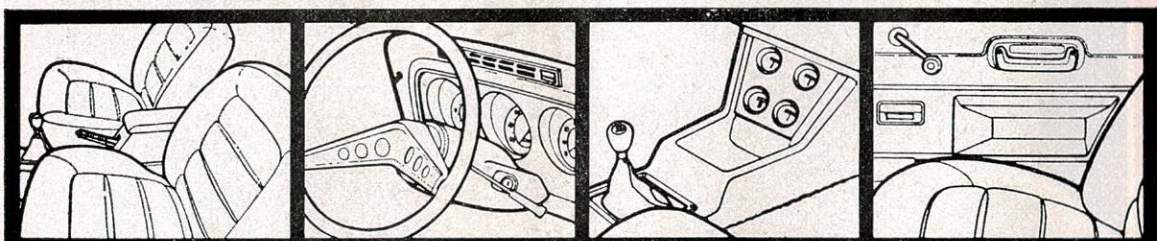
BOB PROSSER



Cortina GXL

Exclusive vinyl covered roof and heated rear window. All-round spacious luxury. Cut-pile carpets, fully trimmed interior, three way adjustable seats give extra comfort and convenience. Spacious luggage compartment.

New front and rear suspension units. New 1600cc OHC engine. Aggressive performance, combined with the above features exclusive to the GXL, make it a car anyone would be proud to own.



critchley's garages limited

212 WORSLEY ROAD · SWINTON · LANCASHIRE

telephone: 061-794 4592

SALFORD SCENE

Total commitment needed from all

Says Salford coach Les Bettinson

TODAY we begin our assault on Wembley and if we wish to appear there on May 11 our first task is to overcome Oldham.

The preparation is now complete—the players have sweated through their final training session, rehearsed all the moves and discussed tactics for the last time.

There is nothing left for them to do but to go out and play to win.

The next eighty minutes is going to test every sinew, muscle and nerve to the limit; the tension you feel is experienced by the players ten times over, because they know that they carry all your hopes and fears on their shoulders.

I do believe, however, that being successful in a cup-tie calls for a united effort from everybody associated with Salford R.L.F.C.—players, coaching staff, directors . . . and YOU!

You, the spectators, can help us to win this match by cheering and encouraging our lads from beginning to end.

We need total commitment—no ditherers.

DON'T get on the back of a player who misses a tackle or knocks on—swallow your criticism until after the match.

Remember, for better or worse, your presence on the Wembley terraces to see Salford there again is in the hands of those red-shirted players.

All you have to do today is cheer and shout until you lose your voices.

So come on, you Salford supporters. When the team comes running out onto the pitch—SHOUT YOUR BLOOMIN' HEADS OFF!

INTERNATIONAL

SALFORD'S six current internationals were given a vote of confidence when the Selection Committee met at the Willows on Wednesday to decide on the team to meet France at Wigan on February 17, writes Bert Hughes.

Winger Keith Fielding and off-half Kenny Gill appear for the second time in the Great

Britain strip and the four more experienced Reds are also retained in a side which shows only one change from that which won so handsomely at Grenoble.

Reverting to their original team for that match, the selectors replace Castleford's Brian Lockwood with Terry Fogerty (Rochdale), who missed the game through injury.

Today's visitors are represented in the form of goalkicking prop Terry Clawson, despite a lobby which advocated changes at, among others, numbers eight and one.

Congratulations to all.

DEBUT

FORWARD Barry Kear, transferred to Hull just over a week ago, made a try-scoring debut for his new club last weekend.

But as well as finishing up on the losing side, Barry found himself the centre of a dispute between player-coach Clive Sullivan and the Boulevard directors.

Happily this was soon cleared up, and we wish the big forward the best of luck back in his home county.

AMATEUR

PLAYING for Kippax White Swan at Leigh today will be former Salford 'A' teamer Alan Carter.

Signed as a full-back or centre nearly four years ago, Alan suffered a string of injuries which adversely affected his form at the Willows and was released after two years.

BACK

POPULAR utility back Alan McInnes is back in training with us after being crossed off Warrington's register.

Mac has, I understand, offered to help out in any way he can, including turning out if necessary for the 'A' team.

JUNIORS SCENE

'C' LEAGUE AGE PROBLEM

By Ivor Edwards

THE PRESENT under-18 age limit in the Colts League is now becoming a fallacy.

Several teams are playing men rather than boys and clubs who do play to the laws find that injuries to younger boys happen more frequently—and help to deter youngsters from coming into our game.

We all know it's a competitive game for League points, that teams play to win and that the bigger and stronger the team the better their chances. However good the younger ones are, though, brute force will eventually wear them down and destroy their sporting morale.

(Probably one of the main faults is that no team sheets are submitted to match officials, so we rely on the good faith of coaches to field under-18s.)

As things are going at present all teams are going to adopt the same methods unless some drastic measures are implemented.

Winning the League championship, as we did last season with probably the most attractive colts team, did us no justice. Our boys did not receive a trophy, medal or memento of any description from the Rugby League.

We should abolish league points and table and adopt the Rugby Union method of playing the game in a true and sporting manner. Winning the match is, of course, the object of any team, but playing and competing is far better. This may sound amateurish, but after all, these lads ARE amateurs.

Our job is to introduce youngsters to the professional game and we can do this, league points or no, but destroying their morale is harming the game.

If it is allowed to carry on next season we shall see fewer colts teams taking part—or the name 'Colts' will have to disappear and be replaced by such as 'Semi-pro Xllls' or 'Open Age Colts'.

'B' DOUBLE

EAGER to get back on the winning trail after losing to Widnes 'B', a winning double was completed over Allied Rangers (Warrington) by Salford 'B' last weekend, writes Bryn Hartley.

Early exchanges were even with some strong, relentless forward play by both sides, though McKenna was brought down in the corner by the Rangers full-back after Lacey, Etchells and Simcox had opened out play.

A switch across field gave Arnott the chance to outpace the cover and score in the opposite corner.

Rangers came back through their forwards but Salford were soon on the attack again, Potts linking up well from full-back to score a good try wide out.

Fine tacking by the Rangers full-back saved a couple of dangerous situations, but Fox, Malone and Coates combined well with Jones and Wharton raced through to bring the half-time score to 9-0.

Taking advantage of this lead, Allport (centre) and Wilson (second row) substituted and though inexperienced and lacking match practice, both showed up well, the former tackling well and the latter running hard off the Salford line.

Smithson and Wood took the game to the Rangers half before Smithson made the half-break to give Arnott his second try, Lacey's kick hitting the upright.

Malone returned to give extra weight to the pack and he sent McKenna over only to be recalled for a forward pass, but well prompted by Jones the Salford forwards were again on top and Fox forced his way over to complete the scoring.

Team: Potts; Arnott, Simcox, Etchells, McKenna; Lacey, Jones; Malone, Wood, Fox, Smithson, Coates, Wharton. Subs: Allport, Wilson.

Willows Squash Club—New Courts

THE completion of two new squash courts behind the existing ones in Willows Road will double the facilities available to Willows Squash Club members.

The membership list is therefore being extended and prospective members are invited to contact Mr. Graham Atkinson, Salford Football Club Secretary, tel. 061-736 8541.

The terms are £10 plus £1 Value Added Tax per year and include membership of the Willows Variety Centre.

The only thing that you need to know about Motor Insurance—

Our Name

SWINTON

Our job is to get you a motor insurance policy that gives maximum cover for minimum premium—exclusively through first-class insurance companies, all members of Lloyds or the British Insurance Association.

Call at your nearest Swinton branch. Take advantage of Swinton's vast knowledge of insurance companies and their policies. They will be pleased to give you an immediate quotation.

Salford: Stamford House, Chapel Street (opposite Salford Royal Hospital).

Tel.: 061-832 7735/6.

Open till 8 p.m. Mon.-Fri., Sat. till 4.30 p.m.

SWINTON (Insurance Brokers) LIMITED
Members of the Association of Insurance Brokers.

Fred Brooks PARK GARAGE

Swinton Park Road · Salford 6
Telephone: 736 3095

If it's Esso it must be good



Celebrate Salford's victories with Grunhalle.
Real lager beer brewed the Bavarian way.



**Grunhalle
Lager**

KEEP UP-TO-DATE AND READ

TOM BERGIN

on Salford Matches and Matters

in the

Salford City Reporter

Fullest Reports — Exclusive News — Photographs

The steel structure of the new Salford R.F.C. Clubhouse was designed and erected by

WADE, DONBAVAND LTD.

STRUCTURAL ENGINEERS

STATION HOUSE, ALTRINCHAM
CHESHIRE WA 14 IEP

061-928 8420/28/29

CHESTERFIELD LIVERPOOL
MANCHESTER

Nationwide service in the design and erection of industrial buildings and structures in steelwork and reinforced concrete. Prefabricated buildings.

AUSTIN WILKINSON

Haulage Contractor

KNOTT STREET, SALFORD M5 2EF

ALSO

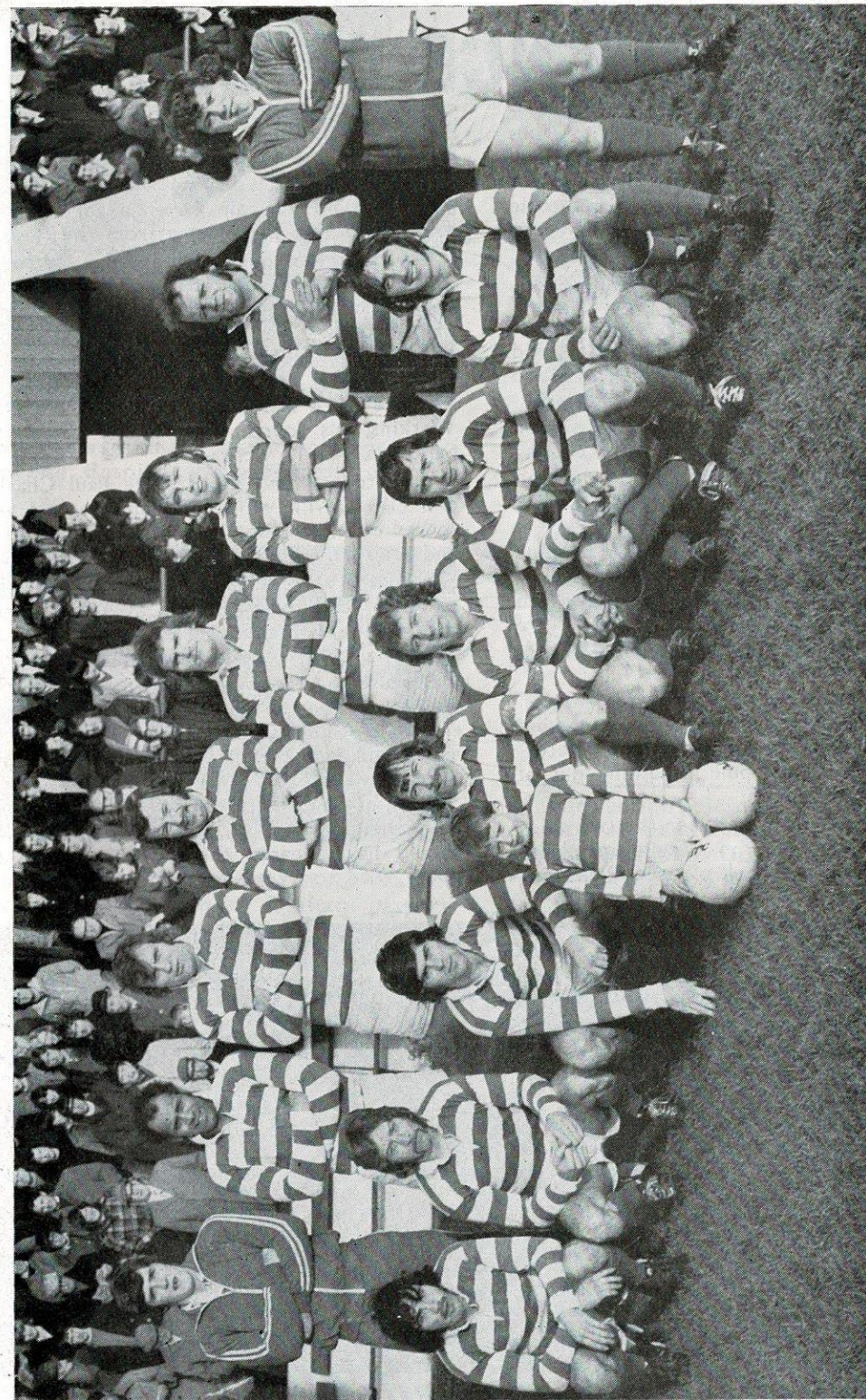
9 DICKSON STREET, LIVERPOOL L3 7EB

MANCHESTER . LIVERPOOL . BIRKENHEAD . MIDLANDS

DAILY SERVICE

Tel. 061-736 2623/5006

051-207 1746



OLDHAM

Back (left to right): Stuart Bottom, Mike Elliott, Brian Gregory, Keith Ashcroft, Tony Peters, Fred Hall, Bill McCracken, John Blair. Front: David Treasure, Martin Murphy, Chris O'Brien, Mick McCone, Kevin Taylor, Phil Larder, Geoff Munro. (Picture: Oldham Chronicle)

LAST CHANCE OF GLORY

OLDHAM began this season in disastrous fashion and, but for an inspired winning spell just before Christmas, they would be almost certainly relegated: as it is they lie in mid-table having won nine of their 20 First Division matches, writes Don Yates.

That winning pre-Christmas spell brought them double victories over Whitehaven (12—9 at home, 19—12 away) and Featherstone Rovers (14—12 at home, 19—10 away) and a good 12—11 victory over St. Helens, which was also well received at the Willows.

In cup football, Oldham's record this season is even worse with their only victory coming in the Floodlit Cup, 16—9 at Wigan in the preliminary round after losing the first leg 14—12 at home.

However, at the next hurdle Rochdale Hornets won 4—0 at Watersheddings to complete a most miserable picture for, prior to this, Wigan had won 20—12 at Oldham in the Lancashire Cup whilst in the Players No. 6 Trophy Oldham were swamped at Warrington 31—14.

Despite Oldham's rather wayward form in recent matches, Salford are certainly expecting a tough game this afternoon for the Watersheddings outfit usually pull something out of the bag when they meet.

One of the best games between the two sides in recent seasons was the League match at Watersheddings which took place in December

1972. Both sides had already gained cup victories at their opponents' expense earlier in the season, Oldham beating Salford 12—8 in the Floodlit Cup to gain revenge for a 41—17 Lancashire Cup hammering from the Reds.

On a rather damp Wednesday evening a crowd of 3,010 was attracted to Watersheddings to watch this most entertaining encounter. Salford led 7—2 at half-time but in the second half Oldham recovered and almost snatched victory.

However, a last-minute penalty from David Watkins, his fourth goal of the game, gave Salford a 14—12 victory.

Try scorers for Salford were Paul Charlton and Ellis Devlin whilst Oldham's points were scored by Mike Elliott and Jim Reynolds (tries) and goals from Phil Larder (2) and Frank Foster.

A match as entertaining as that one would certainly send today's crowd home happy, and the glamour of the Challenge Cup will add additional spice to this afternoon's encounter.

Because they are not involved with any First Division pressures Oldham will be out to give their all in this last chance to salvage glory this season and many of their supporters are confident of victory.

With home advantage, however, Salford must have the edge and by 4.30 this evening they should have cleared the first hurdle on the rocky road to Wembley.

ACTION!



Tony Peters gets his pass to colleague Mick McCone despite the attention of three Salfordians

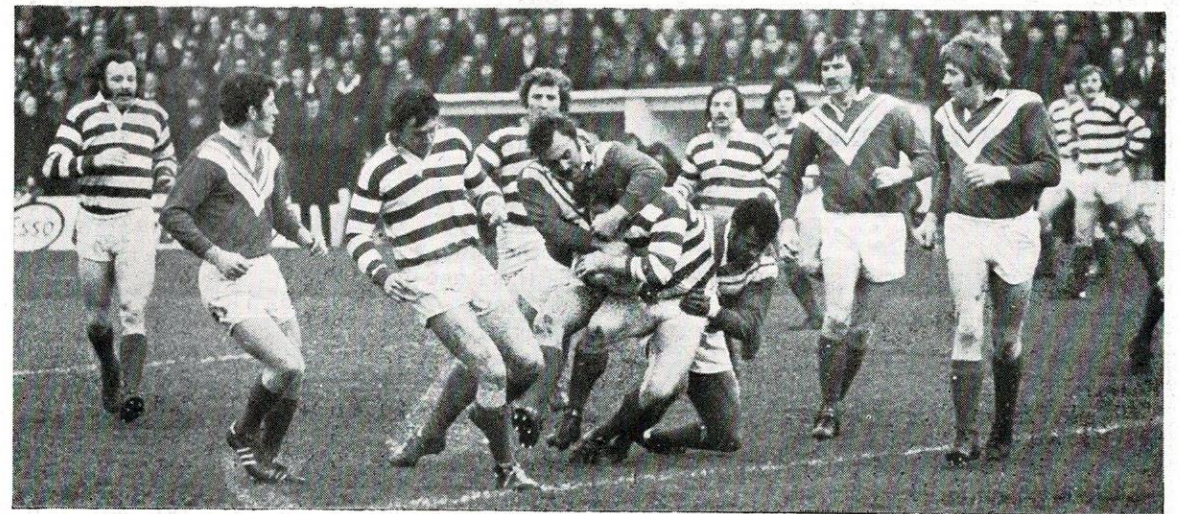


Centre of attention—that's David Watkins as he is surrounded by Oldham players



No way through for Salford's Maurice Richards as he is stopped by a trio of Oldham defenders

The action pictures in this issue of 'Scene' were taken during Oldham's last visit to the Willows and are reproduced by kind permission of the 'Oldham Chronicle'.



... but is held by Salford's Mike Coulman and Colin Dixon



FRED HALL, Oldham No. 10, attempts to break through ...

The Facts and Figures page

RESULTS IN DETAIL

Sunday 27 January **League**
SALFORD 3-1-11 **St. Helens 2-3-12**

Team: Charlton (t); Fielding, Watkins (g), Hesketh, Richards (t); Gill, Banner; MacKay, Walker, Davies, Coulman, Dixon (t), Knighton.
Subs: Prosser (for Charlton), Grice (did not play)
 H.T. 3-7. Att. 9,781.

FIRST TEAM RECORD

	P.	Sub.	T.	G.	Pts
Banner	21	2	4	1	14
Charlton	26(7)	—	11	—	33
Coulman	14	—	3	—	9
Davies	24	1	1	—	3
Dixon	25(1)	—(2)	6	—	18
Fielding	25(1)	—	27(3)	—	81(9)
Giedziun	—	1	—	—	—
Gill	27(1)	—	3(1)	—	9(3)
Grice	11	7	—	—	—
Grimes	2	—	—	—	—
Hesketh	27(6)	—	8	—	24
Holland	15	—	5	2	19
Kear	10	1	—	—	—
Knighton	13	9	5	—	15
MacKay	25	—	3	—	9
Prescott	15(1)	—	2	—	6
Prosser	—	3	—	—	—
Richards	12	—	8	—	24
Stead	1	1	—	—	—
J. Taylor	4	—	2	—	6
Turnbull	1	2	—	—	—
Walker	24	1	1	—	3
P. Ward	2	1	—	—	—
Watkins	27	—(2)	13	120	279
Total	351(17)	29(4)	102(4)	123	552(12)

(Representative record in brackets—friendly matches not included).

THE LEAGUE'S TOP SCORERS

Tries—
 30—KEITH FIELDING (SALFORD)
 25—David Smith (Wakefield Trinity)
 21—Frank Wilson (St. Helens)
 19—John Atkinson (Leeds)
 18—David Eckersley (St. Helens)
 Roy Mathias (St. Helens)
 Bob Fleay (Swinton)

- 15—Alan Smith (Leeds)
 David Topliss (Wakefield Trinity)
 Warren Ayres (Wigan)
 Bruce Burton (Halifax)
- 14—Sammy Lloyd (Castleford)
 Les Jones (St. Helens)
 Mike Lamb (Bradford Northern)
 Clive Sullivan (Hull)
 Paul Jackson (Swinton)

Goals—

- 120—DAVID WATKINS (SALFORD)
- 109—Sammy Lloyd (Castleford)
- 103—Brian Jefferson (Keighley)
- 98—Derek Whitehead (Warrington)
- 78—Ray Dutton (Widnes)
- 75—Steve Quinn (York)
- 74—Paul Jackson (Swinton)
- 71—Bill Holliday (Rochdale H.)
- 68—Eddie Tees (Bradford Northern)
- 67—Kel Coslett (St. Helens)
- 66—Nigel Stephenson (Dewsbury)
 Keith Mumby (Bradford Northern)
- 64—Jim Fiddler (Leigh)
- 63—Harold Box (Featherstone R.)

Points—

- 279—DAVID WATKINS (SALFORD)
- 260—Sammy Lloyd (Castleford)
- 221—Brian Jefferson (Keighley)
- 202—Derek Whitehead (Warrington)
- 190—Paul Jackson (Swinton)
- 168—Steve Quinn (York)
- 165—Nigel Stephenson (Dewsbury)
- 163—Bruce Burton (Halifax)
- 159—Ray Dutton (Widnes)
- 146—Jim Fiddler (Leigh)
- 142—Bill Holliday (Rochdale Hornets)
 Eddie Tees (Bradford Northern)

FIRST DIVISION

	P.	W.	D.	L.	For	Agst.	Pts.
Salford	16	14	0	2	347	118	28
St. Helens	17	13	0	4	339	167	26
Leeds	14	12	0	2	330	119	24
Dewsbury	20	11	1	8	274	330	23
Wakefield T.	17	11	0	6	321	230	22
Rochdale H.	16	10	1	5	240	195	21
Featherstone	17	9	1	7	269	252	19
Oldham	20	9	0	11	244	350	18
Warrington	18	8	1	9	223	211	17
Bramley	17	8	1	8	209	229	17
Castleford	20	7	2	11	290	279	16
Hull K.R.	20	6	2	12	267	400	14
Widnes	17	6	1	10	226	232	13
Wigan	18	5	2	11	219	237	12
Leigh	19	5	0	14	182	362	10
Whitehaven	20	3	0	17	192	461	6

Follow your Team
 in Comfort

LANCASHIRE UNITED

TRANSPORT LTD

PRIVATE PARTIES CATERED FOR

Telephone: 794 2295

CONSULT . . .

POWNALL WELDING COMPANY

FOR
 WELDING, OXY AND ELECTRIC
 ALSO BRACKETS, GARDEN GATES
 AND CAR CHASSIS

CHEETHAM ROAD, SWINTON,
 MANCHESTER

Tel. 794 2780

fergusons OF SALFORD

PLUMBERS MERCHANTS

agents for all leading makes of bathroom
 suites, sink units, fireplaces

254-262 Regent Road
 Salford

Phone 061-872 1471/2

Phone: 834 6985

H. C. COOKE

★
 LEADING SPORTS OUTFITTER TO
 THE RUGBY LEAGUE

★
 Equipment for every Sport

Call in and see us at
 26 JOHN DALTON STREET,
 MANCHESTER

Boothstown Pneumatics Ltd

BOOTHSTOWN, WORSLEY, MANCHESTER

Official Distributor of Norgren Air Equipment

Suppliers of Schrader Air Control Valves,

Air Line Accessories, etc.

Ring Mr. N. S. Brook: 061-790 2100

Tel 061-834 2180

E. J. STEVENS & SONS

273 CHAPEL STREET

SALFORD 3

★

WHOLESALE SUPPLIERS OF
GLASSWARE AND CROCKERY
TO HOTELS, CLUBS AND
CATERING TRADE

Louis C. Edwards & Sons

(Manchester) Ltd.

HIGH CLASS MEAT PURVEYOR

Main Suppliers to Hotels, Steak Houses,
Hospitals, Holiday Camps, Schools, Industrial
Canteens, etc., throughout the North

DEAL WITH US FOR GOOD

Enquiries:

5 NEW STREET

Manchester 10.

Tel. 061-205 4301

Manchester
Evening News

FOR THE TOP WRITERS
IN SPORT!

football
PINK

Batty's Scene

WEMBLEY LOSS— AUSSIES WARNED



By BRIAN BATTY

("Daily Mail")

IT IS STILL quite a while before the Great Britain tour party sets off in May yet, somehow, we can't keep the Australians out of the headlines these days.

It seems they are not going to be content with stripping us of our stars but also want to keep our game on the breadline.

They ignored repeated warnings on the recent tour that Wembley was not the place to play the First Test, and it will be interesting to hear how they react to a £500 loss.

I know they can rightly point to the influence of television but I was among those who felt they were determined to have it at Wembley—or nowhere.

"The annoying thing is that the Australians just would not listen to us, and we gave them plenty of warning when they first wanted to change the itinerary", says League secretary Bill Fallowfield.

FAVOUR

Personally, and I'm not being wise after the event, I was in favour of taking the Test to White City, where it drew 18,000 in midweek in 1967.

The costs would have been considerably less for Wembley took a 25 per cent cut and White City would have been far more accessible to those Australians in the Earls Court area.

With an evening game the second half could have been shown live on television.

The profits of £2,500 from the Second Test at Headingley and the £1,000 from Warrington in

the weather-hit Third Test are still peanuts compared with those for Tests in Sydney and Brisbane.

POOLING

So now the Australians want to introduce a new system of pooling tour receipts or rather the profits.

They claim that it is wrong for the English League to collect a profit in the region of £40,000 for a tour of their country when they are running at a loss in this country.

I think one must sympathise with them to a point but there seems to be no comparison between the drawing powers of the two countries.

"It is like the boxer who can command the fans", says secretary Fallowfield. "He is able to bank on receiving a bigger purse from the takings".

The British teams have always captured the imagination of the crowds Down Under, maintaining their reputation for playing fast, exciting and open football.

This could not be said of the first part of this season's tour by the Australians, who were more intent on earning a reputation for toughness rather than talented play.

They are always more physical than skilful and this makes it harder to sell a tour even though some people are reputed to enjoy quite a helping of meat in their sporting sandwich.

SALFORD FOOTBALL CLUB CO. (1914) LTD.

Willows Road, Salford M5 2FT

PRESIDENT: J. W. Hammond, Esq.

DIRECTORS: G. B. Snape (chairman),
F. Brooks, H. K. Snape (Hon. Treas.)

V. H. Darby,
Hon. Doctor: Dr. F. A. MacKenzie.

Secretary: G. Atkinson.

Coach: L. Bettinson

'Scene' Editor: Bert Hughes

Telephone: 061-736 8541 (including Willows Variety Centre & Willows Restaurant)

Fixtures

First Team

1973		F	A
Fri. Aug. 3—Dewsbury (Charity)	H	25	6
Fri. 10—St. Helens (Charity).....	A	18	15
Fri. 17—Leigh (7.30)	H	31	4
Sat. 25—Bramley (3.00)	A	14	7
Fri. 31—Widnes (7.30) (L. Cup) ...	H	12	11
Fri. Sept. 7—Featherstone (7.30)	H	34	4
Fri. 14—Rochdale (L. Cup) (7.30)...	H	24	3
Sun. 16—Doncaster (No.6) (3.30) ..	H	47	17
Sun. 23—Widnes (3.00)	A	23	10
Tue. 25—Whitehaven (L.C. S.-Final) A		23	9
Fri. 28—Hull K.R. (7.30).....	A	24	2
Sun. 30—Australia (3.30)	H	12	15
Fri. Oct. 5—Castleford (7.30).....	H	16	5
Sat. 13—Wigan (Lancashire Cup Final) 9		19	
Fri. 19—Wigan (7.30).....	H	8	4
Tue. 23—Warrington (7.30)	H	26	4
(Floodlit Cup)			
Sun. 28—Warrington (3.00)	A	13	20
Tue. Nov. 6—Widnes (Capt. Morgan) ...	H	32	9
Fri. 9—Whitehaven	A	15	3
Sun. 18—Workington (C. Morgan)....	A	5	10
Tue. 20—Widnes (Floodlit Cup)	H	11	15
Sun. Dec. 9—Whitehaven (2.15).....	H	52	5
Sun. 16—Leeds (No. 6) (2.15)	H	4	17
Wed. 26—Dewsbury (2.15)	H	39	2
Sun. 30—Dewsbury (2.15)	A		P
1974			
Tue. Jan. 1—Oldham (2.15)	H	15	12
Sun. 6—Castleford (2.15)	A	16	11
Sat. 12—Bramley (2.30).....	H	14	10
Sun. 13—Wakefield (2.30)	H	22	7
Sun. 20—Leigh (2.30)	A		P
Sun. 27—St. Helens (3.00).....	H	11	12
Sun. Feb. 3—Oldham ()	H		
R.L. Challenge Cup—1st Rd.			
Fri. 8—Warrington (7.30)	H		P
Sun. 10—Widnes ()	H		
Sat. 16—Leeds (3.00)	A		
Sat. 23—R.L. Challenge Cup—2nd Rd.			
Sun. Mar. 3—Hull K.R. (7.30)	H		
Sat. 9—R.L. Challenge Cup—3rd Rd.			
Sat. 23—R.L. Challenge Cup—1st Semi-final			
Sun. 24—Rochdale H. (3.00).....	A		
Sat. 30—R.L. Challenge Cup—2nd Semi-final			

Sun. April 7—Featherstone (3.30)	A		
Fri. 12—Rochdale (3.00)	H		
Sat. 13—Oldham (3.00)	A		
Mon. 15—Wigan (3.00)	A		
Sat. May 11—R.L. Challenge Cup Final.			

'A' Team

1973		F	A
Sat. Aug. 18—Leigh 'A' (3.00)	A	42	5
Fri. 31—Swinton 'A' (7.30)	A	3	47
Sat. Sept. 8—Workington 'A' (3.00)...	H	24	19
Fri. 14—St. Helens 'A' (7.30)	A	6	12
Fri. 21—Widnes 'A' (7.30).....	H	5	9
(Lancs. Shield—1st Leg)			
Fri. 28—Swinton 'A'.....	H	19	15
Wed. Oct. 3—Widnes 'A' (7.30).....	A	4	7
(Lancs. Shield—2nd Leg)			
Fri. 5—Warrington 'A' (7.30).....	A	3	35
Fri. 12—Rochdale 'A' (7.30)	A	3	14
Sat. 20—Wigan 'A' (3.00)	A	4	8
Fri. 26—Warrington 'A' (7.30)...	H	14	12
Sat. Nov. 10—Workington 'A' (3.00).....	A	9	7
Fri. 23—St. Helens 'A' (7.30).....	A	21	18
Fri. 30—Warrington 'A' (7.30)...	H		P
Sat. Dec. 15—Barrow 'A' (2.15)	H	28	19
Sat. 29—Workington 'A' (2.15)...	H		P
1974			
Sat. Jan. 5—Oldham 'A'	H	16	12
Fri. 18—Leigh 'A' (7.30)	H		P
Wed. 23—Oldham 'A'	A		P
Fri. Feb. 1—Huyton 'A' (7.30)	H		
Sat. 9—Warrington 'A' (3.00).....	A		
Fri. 15—Huyton 'A' (7.30)	H		
Sat. 23—Barrow 'A' (3.00).....	A		
Sat. Mar. 2—Huyton 'A' (3.00).....	A		
Fri. 8—Widnes 'A' (7.30)	A		
Fri. 22—St. Helens 'A' (7.30)	H		
Sat. 30—Huyton 'A' (3.00)	A		
Fri. April 5—St. Helens 'A' (7.30)	H		
Tues. 9—Rochdale 'A' (7.30)	H		
Sat. 13—Workington 'A' (3.00).....	A		
Tues. 16—Wigan 'A' (7.30).....	H		

Fixtures Copyright, The Rugby Football League

SALFORD RUGBY CLUB DEVELOPMENT ASSOCIATION

New weekly draw — Three chances for 10p.

FIRST PRIZE £100 — SECOND PRIZE £40 — THIRD PRIZE £20

PLUS 147 consolation prizes of £1

PLUS free weekly draw for members and agents for a valuable gold plated wrist watch.

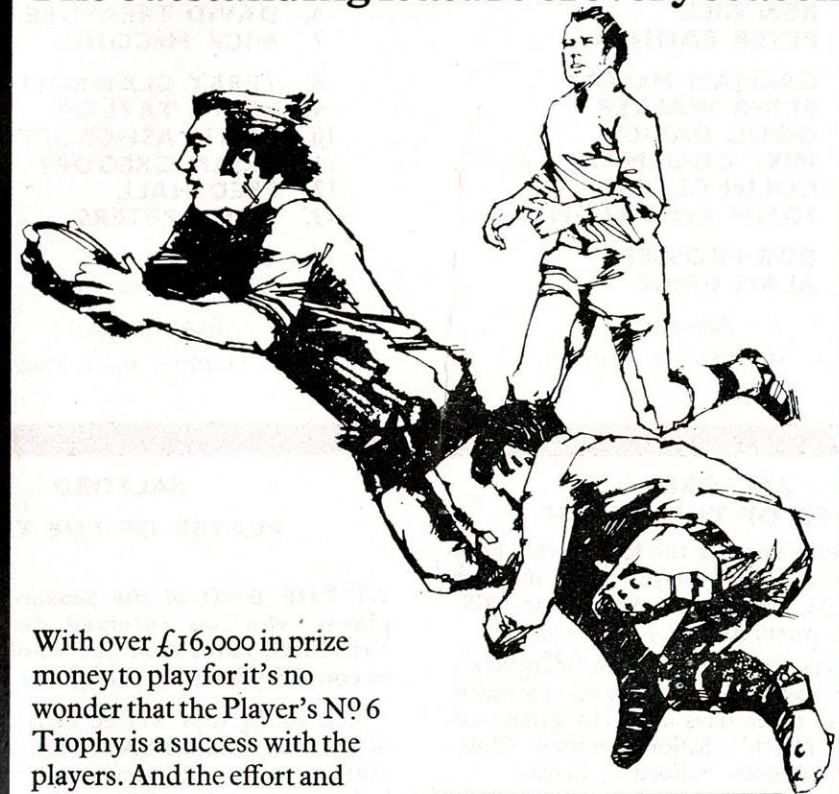
Agents urgently wanted—generous commission.

Please contact Mr. Bernard Joyce at Salford R.L.F.C. or telephone 061-736 8541.

Rugby League's richest prize!

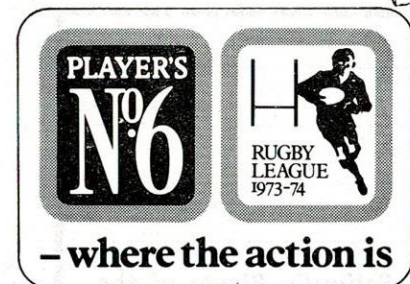
Player's N°6 Trophy

The outstanding feature of every season



With over £16,000 in prize money to play for it's no wonder that the Player's N°6 Trophy is a success with the players. And the effort and skill they put into capturing the Trophy has made sure that this 5 round, 32 club knockout series is a hit with the spectators too.

The Player's N°6 Trophy really is Rugby League's richest prize—in every sense.



— where the action is

PNS 577A

EVERY PACKET
CARRIES A GOVERNMENT HEALTH WARNING

SALFORD 26

versus

OLDHAM 12

SUNDAY, 3rd FEBRUARY, 1974.

Kick-off 3.00 p.m.

RUGBY LEAGUE CHALLENGE CUP — 1st ROUND

SALFORD 26 **OLDHAM** 12

(Red with White V)

(Cherry and White)

1. CHARLTON

1. MURPHY

2. FIELDING *try*

2. O'BRIEN

3. WATKINS *2 tries 4 goals*

3. ELLIOTT

4. HESKETH *try*

4. BOTTOM

5. RICHARDS

5. HOLLAND *3 goals*

6. GILL

6. TREASURE *try*

7. BANNER

7. McCONE

8. MacKAY

8. CLAWSON

9. WALKER

9. TAYLOR

10. DAVIES

10. ASHCROFT *try*

11. COULMAN *try*

11. GREGORY

12. DIXON

12. HALL

13. KNIGHTON

13. PETERS

14. PROSSER

14. Blair

15. GRICE

15. Hughes

Referee: Mr. H. MASON (Halifax)

Touch Judges: Messrs. D. Mairs, and J. Meadows